

52116 Dual 12" 160 watt Fan Assembly Instructions

We do not recommend the use of nylon tie kits or any other "through core" mounting methods for this fan assembly. The 160 watt motors used in this dual fan assembly are too heavy and produce too much starting torque to be supported by the radiator fins. We recommend purchasing a prefabricated mounting kit or fashioning metal brackets that will attach to the six ¼ - 20 nylon reinforced nuts pressed in the back of the shroud and then bolted to the U-channels of the radiator/heat exchanger (See Fig 1.). 1" X ¼-20 bolts are recommended to attach the brackets to the shroud. Bolts must NOT be long enough to contact the radiator/heat exchanger. See Fig 2 for bolt pattern.

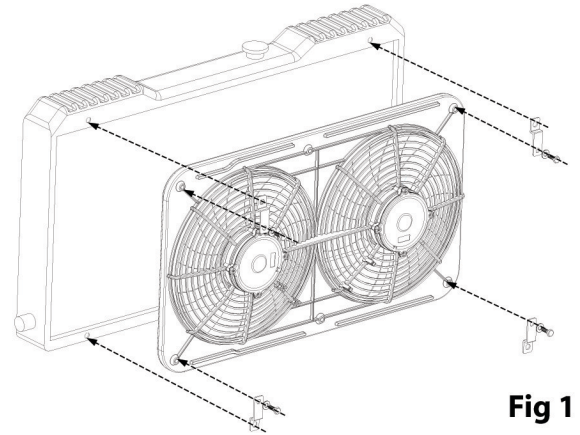


Fig 1

The fans contained in this assembly are assembled in puller configuration from the factory. While these fans can be reversed to be pusher fans, We do not recommend using this assembly as pusher fans on the front side of the radiator due to the large amount of ram air that is blocked by the shroud. Fans used as pushers should only be used as a last resort when there are no other options for mounting. See Fig 3.

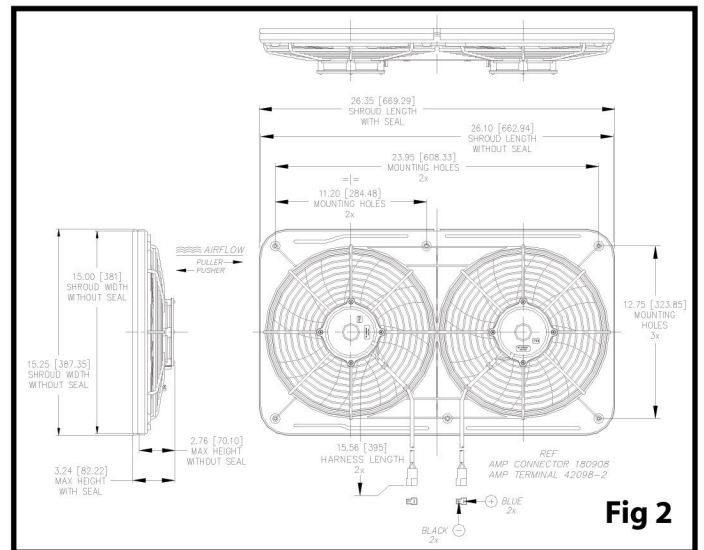


Fig 2

We recommend the use of a thermostatic fan relay harness with at least a 25 Amp relay and fuse for each fan in the assembly. Recommended wire gauge is 14 AWG

BLADE REVERSING INSTRUCTIONS

FANS SHIP IN PULLER CONFIGURATION

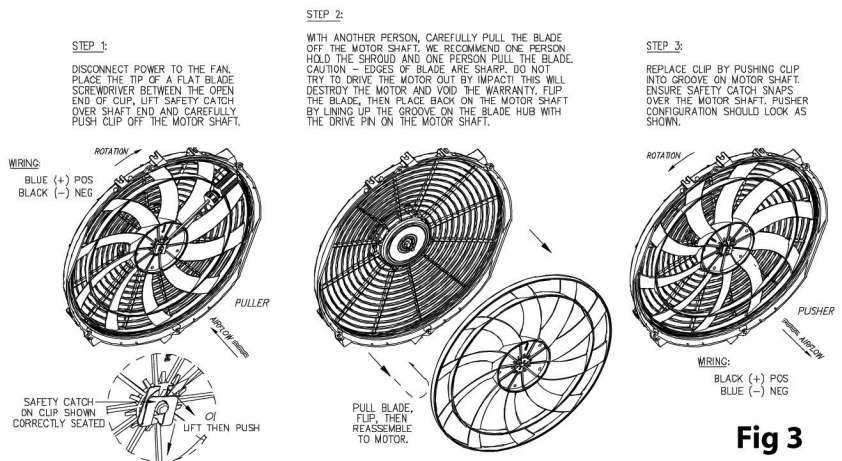


Fig 3

SPECIFICATIONS

MOTOR	160 watt HEAVY DUTY
AIR FLOW @ 0"STATIC	2,600 CFM
SIZE	26" w x 15"h
DEPTH	3.62"
AMP DRAW	28.8 (14.4 per fan)



1-800-345-4545

JEGS.COM