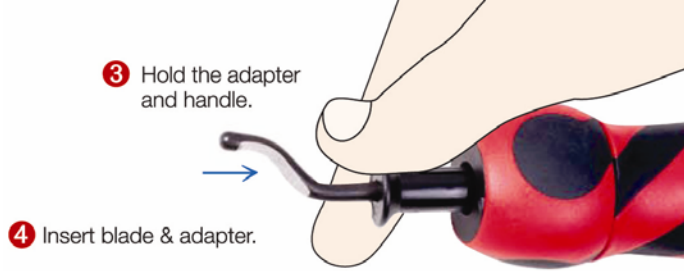
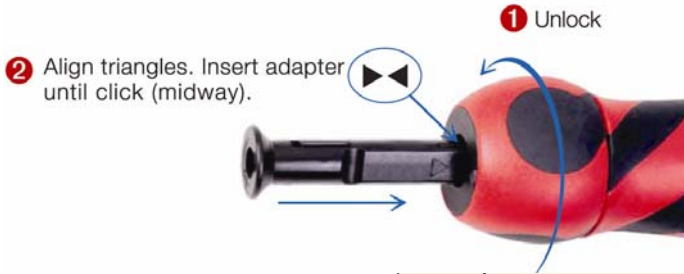


# Installation Instructions for 80810 Deburring Tool

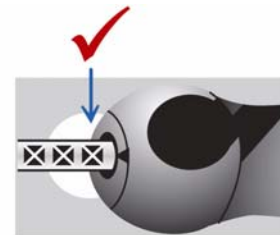
## Installation Instructions:



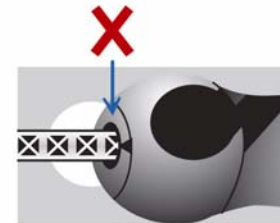
Note: Insert holder at least 30% of length into handle.



## Note



The Mango Handle is designed to lock only when the notches on the holder are in the correct position as shown above.



Notch cannot be halfway in.

Replacement Blades  
(P/N 80811)

**JEGS**  
Performance Products

1-800-345-4545 [jeps.com](http://jeps.com)