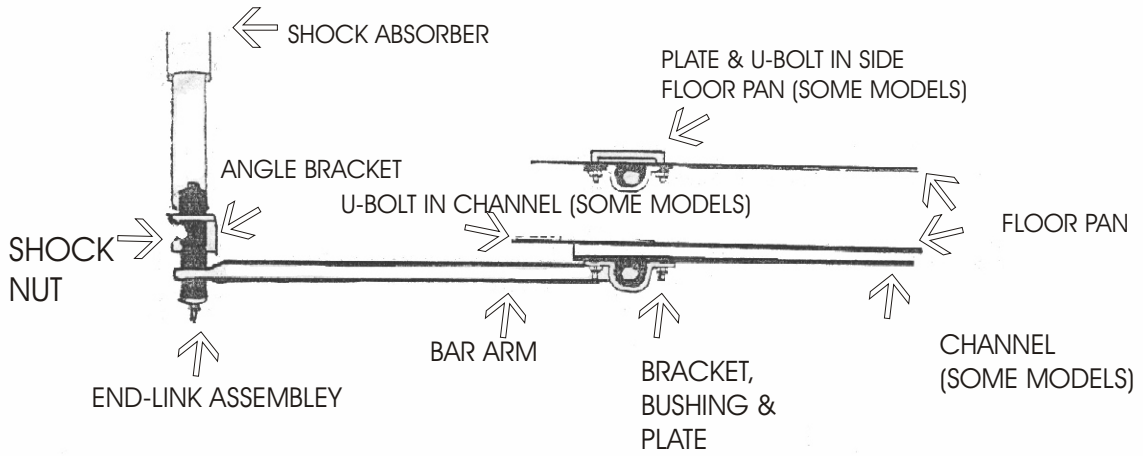
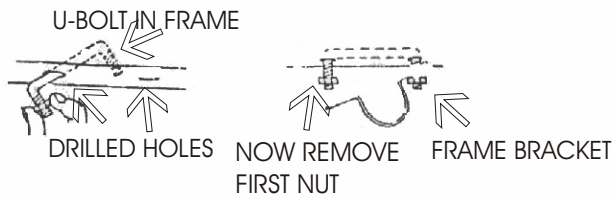


# DIRECTION 102



VIEW: RIGHT SIDE SEEN FROM UNDER CAR

## U-BOLT INSTALLATION DETAIL



## Directions #102

- Step #1. Remove the nut that holds the lower end of the shock absorber in place. Remove the washer, replace it with the angle bracket provided and replace the nut. Position the angle bracket as shown with the horizontal leg above the nut.
- Step #2. Place the bar under the car to the rear of the arms facing forward. The eyes of the bar will line up below the large hole in the horizontal portion of the angle brackets already attached to the shock absorber stud. Attach it using the end-links provided, and assemble them as shown. Tie up the mid-section of the bar so you may assemble the end-links conveniently. Tighten the nut in end-link assembly just enough to keep it snug and to bulge the bushings slightly.
- Step #3. Raise the bar mid-section to the bottom of the vehicle structure. The bottom may be made in two ways; it may be flat pan, in which case simply place the mid-section bushing on the bar. Cover with the bracket provided and mark through the holes. Drill the holes with a 3/8" drill bit. Should your vehicle come with two shallow channels running lengthwise, raise the bar and bushings until they are against this channel? Mark the channel as you would the floor pan and drill two 3/8" holes.
- Step #4. If your car does not have the channels, simply move to the inside of the car. Position the plate provided to align with the drilled holes and place the U-bolt down through it until the legs are hanging down, then from below the car, position the bracket over the legs and secure loosely to the lock-nuts provided. If your car has channels, simply put a nut on one end of the U-bolt. Insert the other end of the U-bolt into the channel and maneuver until it reappears from the other hole. You may have to enlarge the hole slightly with a drill in order to do this as the channel is of limited height. Position the bushings on the bar in the brackets and tighten the lock-nuts on the U-bolts until it holds the bracket securely.
- Step #5. The installation is now complete. Have someone bounce the car to make sure that all parts clear throughout the suspension travel distance. Check all nuts for suitable tightness. Be sure that your car is sitting on level ground and has its weight resting normally on its wheels when all measurements and positioning of the unit is done. It may then be raised for drilling, etc.
- Step #6. Road test you car and familiarize yourself with its handling. As we cannot supervise you installation or driving, we cannot be responsible for more than the cost of the kit. Note: For best results this kit should be used in conjunction with our rear kit 910 for the pre- "69" models and 983 for the later models.

## HARDWARE

2	RH 013	End-links	2	RH 507	Bushings
2	RH 040	Frame Bracket s	2	RH 031	Plates
2	RH 023	Angle Brackets	2	RH 402	U-Bolts
4	RH 304	Lock-Nuts			