



## INTAKE SYSTEMS

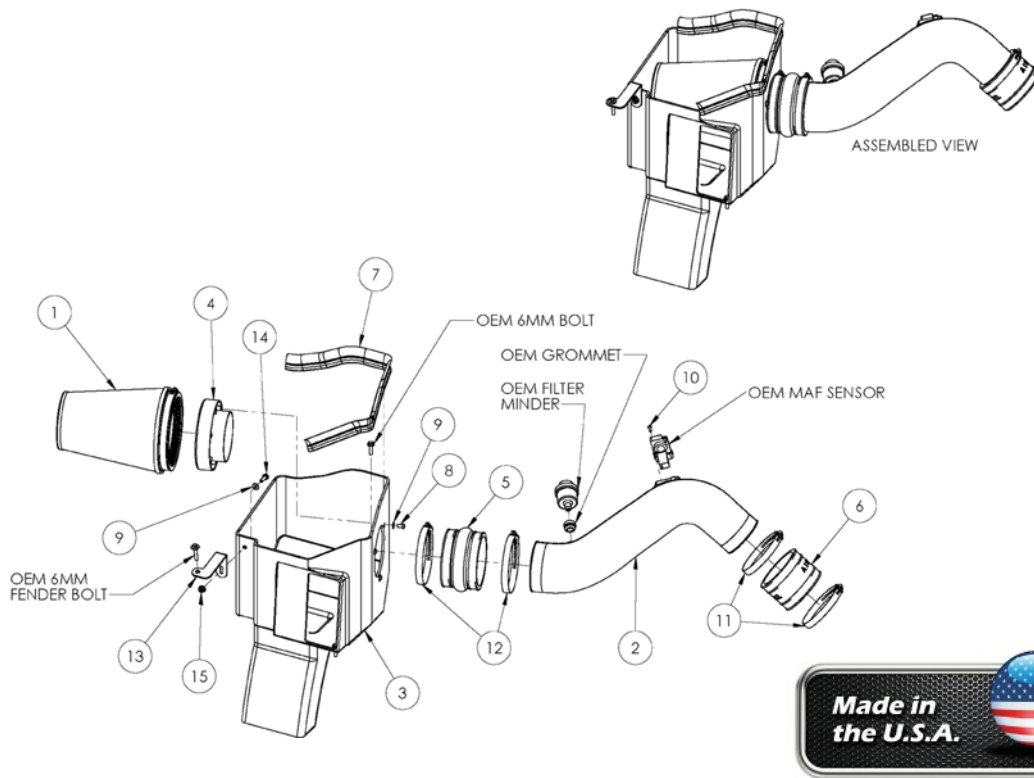
**Installation Instructions**  
**Part Number 200-266**  
**2001-04 Chevy Duramax**  
**2001-04 GMC Duramax**  
**Duramax Diesel 6.6L "LB7"**  
**(Will NOT fit the 2004 "LLY" Engine)**

### Packing List:

#1	700-469	Airaid Premium Filter	1
#2	KIT129-1T	Airaid Intake Tube	1
#3	KIT229CAB	Cold Air Box	1
#4	KIT1121MAFADA	Filter Adapter	1
#5	KITHUMPHS05	Urethane Hump Hose	1
#6	KITCOUPLER01	Urethane Coupler	1
#7	KITWSTRIP03	Weather Strip 25"	1
	KIT266HP	Hardware & Instructions	1
#8	KIT15DHC3050	1/4-20 x 1/2" Button Head	3
#9	KIT09FWZ019	1/4" Flat Washer	4
#10	KIT15BHC3050	8-32 x 1/2" Button Head	2
#11	KITHS60	#60 Hose Clamp	2
#12	KITHS72	#72 Hose Clamp	2
#13	KIT247B	Fender Bracket	1
#14	KIT25C75HCSS	1/4-20 x 3/4" Hex Bolt	1
#15	KIT1420WZZF	1/4-20 Flange Nut	1
#16	KITBIT01	T-20 Torx Bit	1

### Tools Required For Installation:

Flat Head Screwdriver  
 5/16", 1/4", 10mm and 13mm Socket  
 Ratchet and Extension  
 3/32" Allen Wrench  
 #T20 Security Bit (Included)



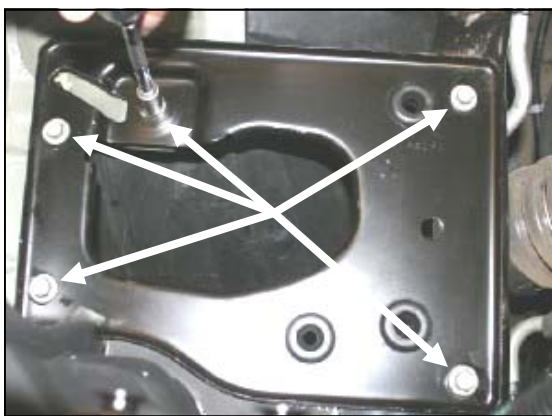
**1. Disconnect the negative battery cable.**  
**A.)** Disconnect the Mass Air Flow (M.A.F.) sensor wiring harness. Using the supplied T-20 Security bit, remove the two screws and the M.A.F. sensor from the tube (save the sensor for reuse).  
**B.)** Loosen the hose clamps on each end of the factory intake tube assembly.



**2.** Remove the factory filter minder and grommet from the side of the factory airbox (save for reuse).



**3.** Remove the factory intake tube assembly from the engine. Rock the factory air box back and forth and remove it from its mounting. There are only grommets holding it in, no bolts.



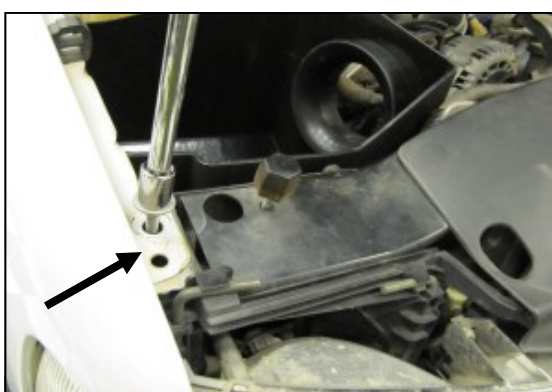
**4.** Using a 10mm socket, remove the five bolts and mounting plate from the engine compartment and set aside. Three of these bolts will be re-used in step 6.



**5.** Install the Filter Adapter (#4) onto the Cold Air Box, or CAB (#3), as shown using the three 1/4-20 Button Head Bolts (#8) and 1/4" Washers (#9).



**6.** Install the Airaid CAB into the vehicle replacing the factory airbox. Secure the CAB using Three of the factory bolts from step 4. Do not over tighten



**7.** Using a 13mm socket, remove the factory fender bolt and set it aside. It will be reused in step 8.



**8.** Install the Fender bracket (#13) as shown. **A.)** Secure the bracket to the fender using the factory bolt. **B.)** Use the 1/4-20 x 3/4" hex bolt (#14), one 1/4" flat washer (#9), and the 1/4-20 flange nut (#15) to secure the CAB to the Bracket.



**9.** Using two 8-32 x 1/2" button head screws (#10) install the factory M.A.F. sensor in the Airaid intake tube (#2) **DO NOT USE THE FACTORY SCREWS!**



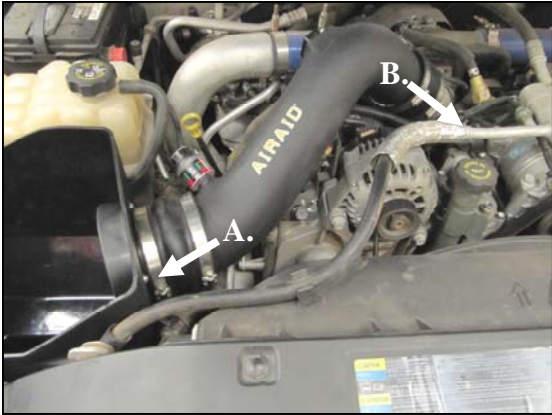
10. Install the factory rubber grommet and air filter minder into the Airaid Intake tube.



11. Install the urethane hump hose (#5) and two #72 hose clamps (#12) onto the large end of the Airaid Intake tube. (*Note: Leave hose clamps loose until final assembly.*)



12. Install the urethane coupler (#6) and two #60 hose clamps (#11) onto the small end of the Airaid Intake tube. (*Note: Leave hose clamps loose until final assembly.*)



13. A.) Install the hump hose end of the Airaid intake tube assembly onto the filter adapter first. B.) Slip the coupler end of the tube over the factory turbocharger inlet. Adjust for fit, and tighten the hose clamps



14. Install the Airaid Premium Filter (#1) onto the filter Adapter, and tighten the hose clamp. Install the Weather Strip (#7) onto the Airaid Cold Air Box. Reconnect the M.A.F. sensor wiring harness. (*Note: Start from one corner and work your way around to insure proper alignment of the weather strip.*)

**15. Double check your work!** Make sure there is no foreign material in the intake path. Make sure all clamps, hoses, bolts, and screws are tight.

**16. Reconnect the negative battery cable!**

**Before!**



**After!**



Thank you for purchasing the Airaid Intake System. Contact Airaid @ (800) 498-6951 8:00 AM - 5:00 PM MST weekdays for questions regarding fit or instructions that are not clear to you. Your Airaid Intake System was carefully inspected and packaged. Check that no parts are missing, or were damaged during shipping. If any parts are missing, contact Airaid. The air filter element is protected from direct exposure to water and debris; care should be taken not to drive through deep water. WATER INGESTION IS THE DRIVERS RESPONSIBILITY! The air filter is reusable and should be cleaned using the Airaid Filter Tune-Up Kit periodically.

**Don't Forget Your AIRAID Filter Tune-Up Kit!**



P/N 790-551 Aerosol Spray  
P/N 790-550 Squeeze



Instructions Revision  
Date: 12/10/10