

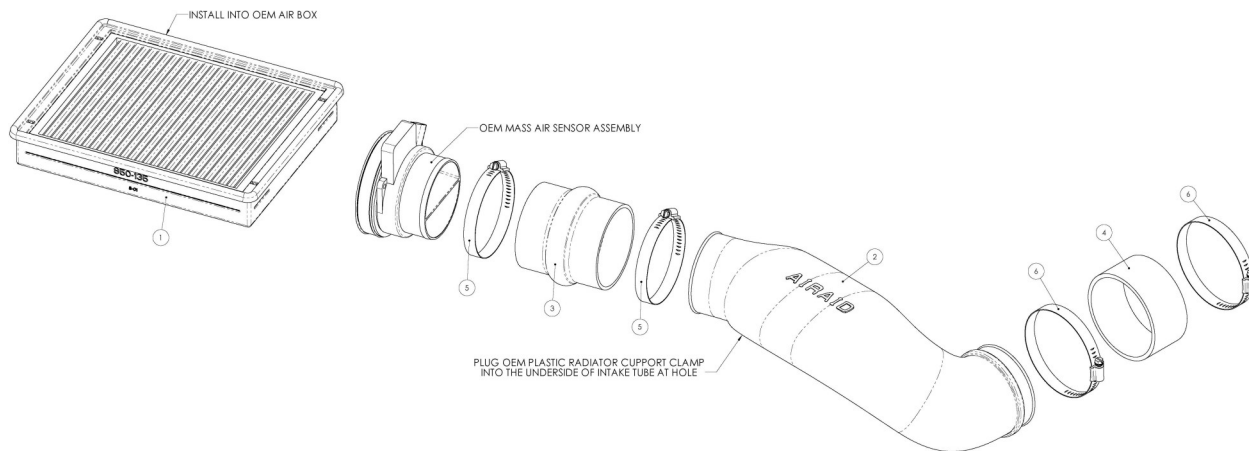


Installation Instructions

For Part Numbers:

200-719 Jr. Kit 850-135 Airaid Oiled Media Filter
201-719 Jr. Kit 851-135 SynthaMax Dry Media Filter - Red

2005-06 Cadillac Escalade/ESV/EXT
2005-06 Chevrolet Avalanche/Silverado 1500
2007 Chevrolet Silverado Classic 1500
2005-06 Chevrolet Tahoe
2006 Chevrolet Tahoe (Canadian)
2005-06 GMC Sierra 1500
2007 GMC Sierra Classic 1500
2005-06 GMC Yukon
4.8L V8, 5.3L V8, 6.0L V8
With Electric Cooling Fans



Component Identification

1.	*Airaid Premium Filter	1
2.	Modular Intake Tube	1
3.	Urethane Hump Hose	1
4.	Urethane Coupler	1
5.	#60 Hose Clamp	2
6.	#64 Hose Clamp	2

* Filter included only in Jr. Kits

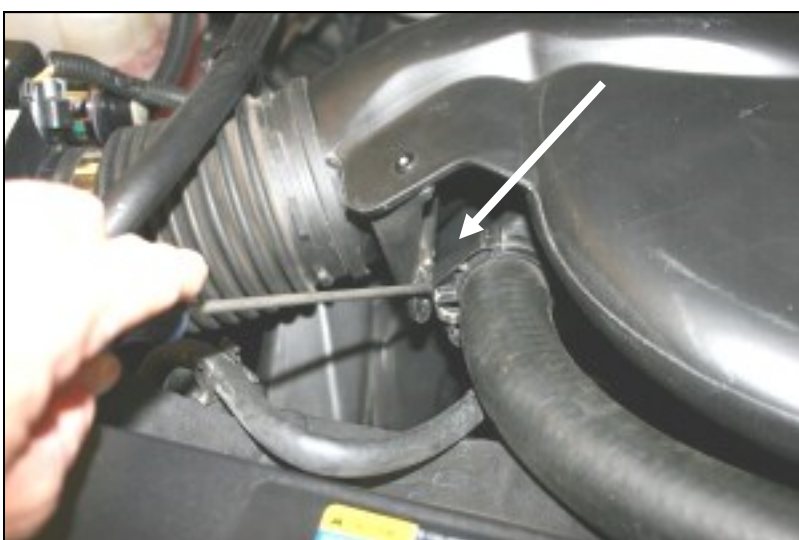
Full color instructions can be viewed on our web site at Airaid.com. Use the **Product Search** function to find your part number, and click **View Details**.



1. **Disconnect negative battery cable.**
With a 5/16" socket, remove one bolt on the top of the beauty cover. Set the bolt and the cover aside for re-installation later.



2. Loosen the hose clamps on both ends of the factory intake tube.



3. With a screwdriver, pry the factory tube away from the plastic tab on the radiator hose clamp, and remove the tube.



4. Install the hump hose (#3) and two #60 hose clamps (#5) on the Mass Air Flow sensor as shown. Leave the clamps loose for now.



5. Install the coupler (#4) and two #64 hose clamps (#6) on the throttle body as shown. Leave the hose clamps loose for now.



6. Install the **Modular Intake Tube** (#2) into the hump hose first, and then into the throttle body. Adjust for fit, and tighten all four hose clamps. Re-insert the plastic piece from step #3 into the hole on the bottom of the MIT.



7. Re-install the beauty cover and bolt. If you purchased the 200-919 MIT Kit, skip to step #10. If you purchased the 200-719 Jr. Kit, proceed to step #8.



8. If you purchased the 200-719 Jr. Kit, remove 4 screws in the factory airbox with a #25 Torx bit, and remove the factory air filter.

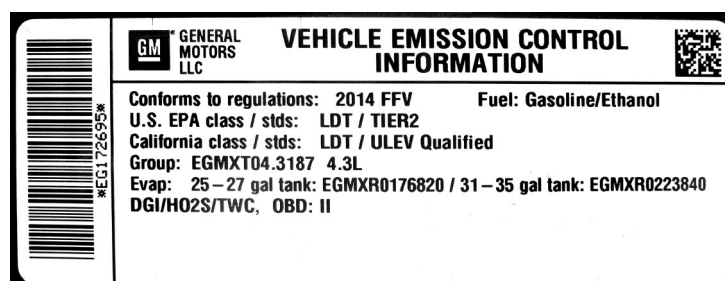


9. Install the Airaid Premium filter into the factory airbox, and re-install the 4 screws.

10. Double check your work!

Make sure there is no foreign material in the intake path. Make sure all clamps, hoses, bolts, and screws are tight.

11. Re-connect the negative battery cable!



WARNING! If your vehicle has a Vehicle Emission Control Information decal affixed to the factory airbox, a new replacement label must be obtained and installed in a readily visible position in the engine compartment in order to remain CARB compliant. Failure to do so will prevent the vehicle from passing a smog check. Replacement labels can be ordered from your local dealership. Regulations state that the VECI label shall not be affixed to any equipment which is easily detached from the vehicle. Label placement, under the hood on a painted surface is recommended.

Thank you for purchasing the Airaid Intake System. Contact Airaid @ (800) 498-6951 8:00 AM - 5:00 PM MST weekdays for questions regarding fit or instructions that are not clear to you. Your Airaid Intake System was carefully inspected and packaged. Check that no parts are missing, or were damaged during shipping. If any parts are missing, contact Airaid. The air filter element is protected from direct exposure to water and debris; care should be taken not to drive through deep water. WATER INGESTION IS THE DRIVERS RESPONSIBILITY! The air filter is reusable and should be cleaned periodically.

FILTER IDENTIFICATION

850-135 Airaid Oiled Media
 852-135 Airaid SynthaMax Dry Media - Black

851-135 Airaid SynthaMax Dry Media - Red
 853-135 Airaid SynthaMax Dry Media - Blue

For your Oiled media filter we suggest using the AIRAID Filter Tune-Up Kit!



Do Not Oil



P/N 790-551 Aerosol Spray
 P/N 790-550 Squeeze Spray



Synthamax Air Filters do not require oil. Service air filter as needed by cleaning with common non-petroleum all-purpose household cleaner and water. Simple Green®, Formula 409® or equivalent works great. Apply cleaner to outside of air filter and allow to soak. Then flush filter clean from the inside out with a garden hose and repeat steps if necessary. Do not apply high pressure water or air to clean filter. Allow filter to air dry and reinstall.