



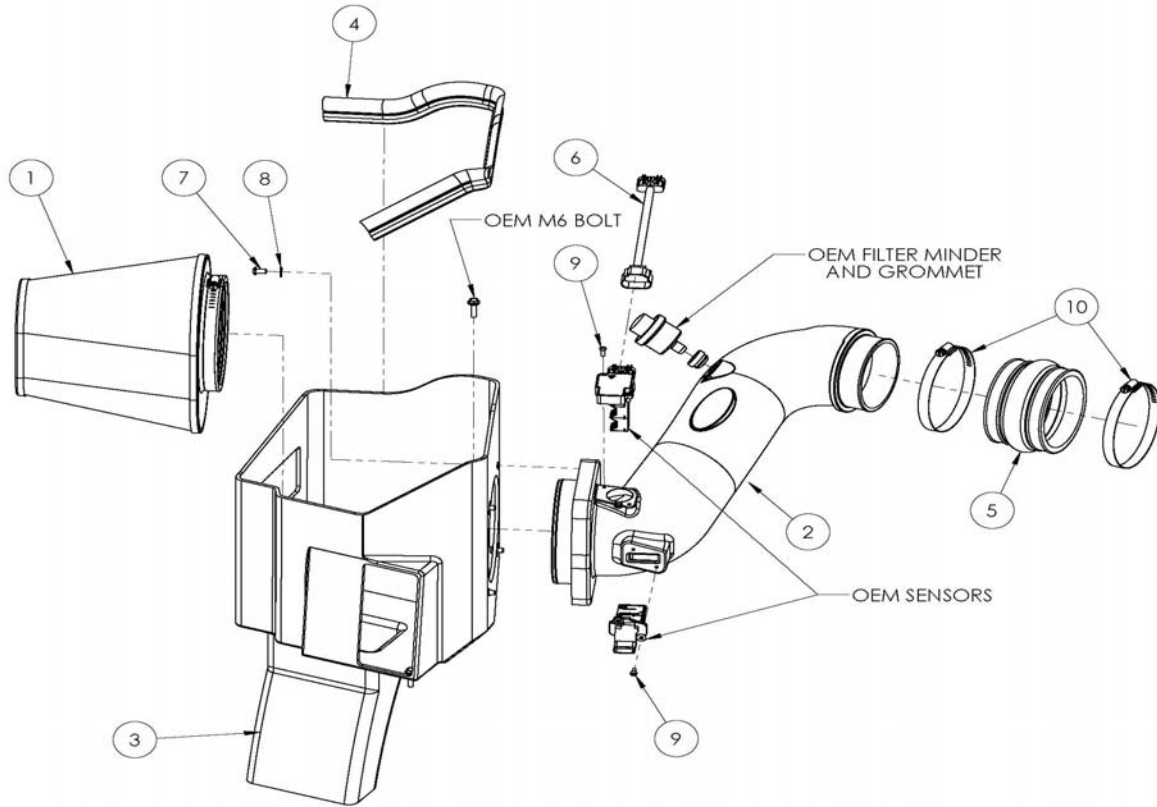
Installation Instructions

Part Number 201-295

2013 Chevrolet/GMC

6.6L Duramax LML

Packing List:



1	721-472	Airaid Synthamax Filter	1
2	KIT295T	Intake Tube	1
3	KIT219CABS	Cold Air Box	1
4	KITWSTRIP03	Weatherstrip 25"	1
5	KITHUMPHS05	Urethane Hump Hose	1
6	KIT295EXT	Extension Harness	1
7	KIT15DHC3050	1/4-20 x 1/2" Button Head Screw	4
8	KIT09FWZ019	1/4" Flat Washer	4
9	KIT15BHC3050	#8-32 x 1/2" Button Head Screw	4
10	KITHS72	#72 Hose Clamp	2
11	KITBIT01	T-20 Torx Bit	1



Full color instructions can be viewed on our web site at [Airaid.com](http://www.airaid.com). Use the **Product Search** function to find your part number, and click **View Details** or go to <http://www.airaid.com/InstallationPDF/200-295.pdf>



Disconnect The Negative Battery Terminal!

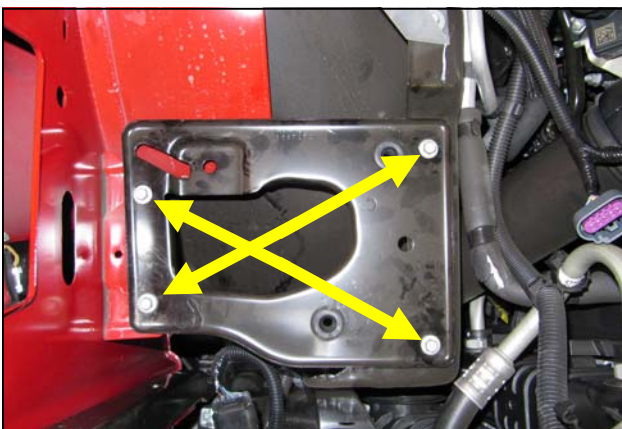
1. Disconnect both of the Mass Air Flow sensors.



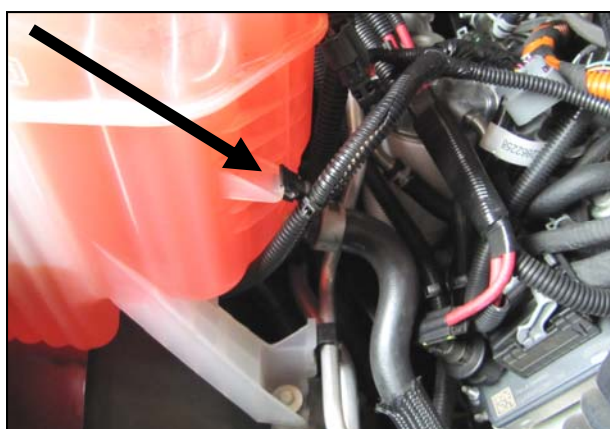
2. Loosen the clamps on both ends of the factory intake tube and remove the tube from the vehicle.



3. Rotate the airbox assembly away from the fender to unseat it from the mounting grommets and remove the entire assembly from the vehicle.



4. Remove the four bolts in the airbox mounting tray and remove the tray from the vehicle. Three of the four bolts will be reused in step 14.



5. Unclip the wire harness from the coolant bottle to gain additional length.



6. Transfer the Mass Air Flow sensors into the Airaid intake Tube and secure them using two 8-32 x 1/2" Button Head Screws (#9) **Do Not Use Factory Screws!**



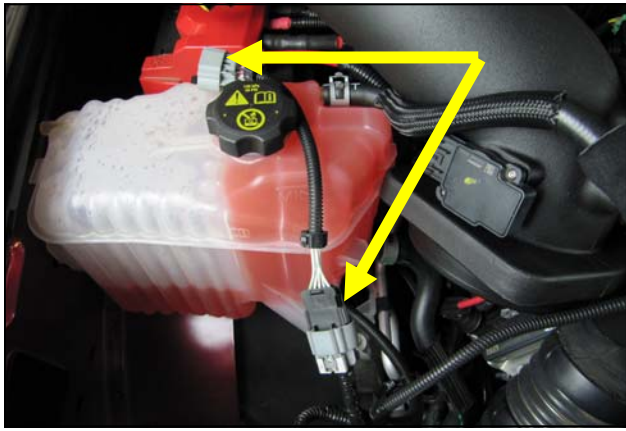
7. Transfer the filter minder and grommet from the factory airbox into the Airaid Intake Tube .



8. Slide the Hump Hose and Clamps onto the turbo inlet. Leave the clamps loose for now.



9. Slide the Airaid Intake Tube under the coolant hose and up the against the cowl as shown.



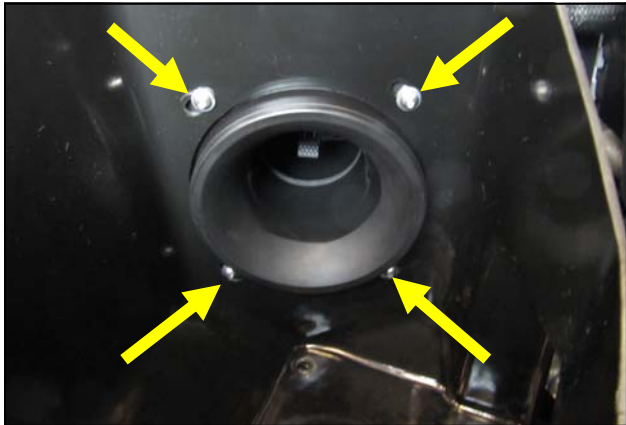
10. Extend the Primary Mass Air Flow sensor's wire harness.



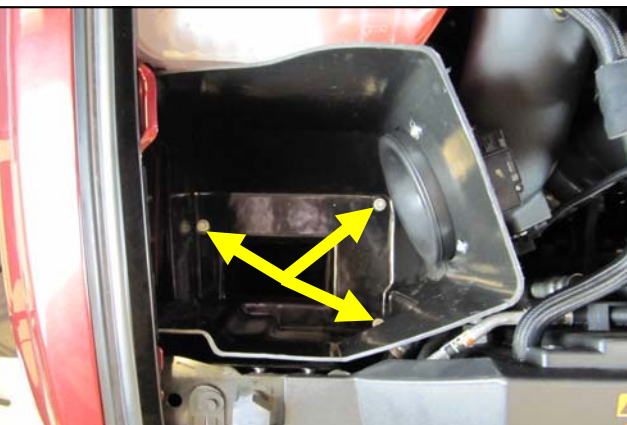
11. Set the Airaid Cold Air Box in the inner fender area as shown.



12. Slide the Intake Tube down and into the Cold Air Box, then into the Hump Hose on the turbo inlet.



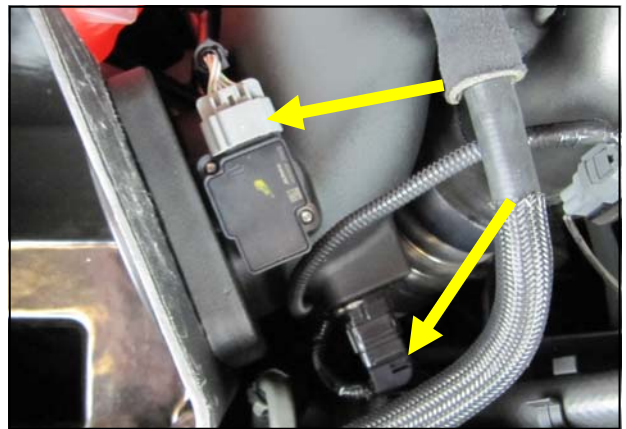
13. Install the four 1/4" Button Head Screws (#7), and four Flat Washers (#8) into the Airaid Intake Tube from inside the Cold Air Box.



14. Secure the Cold Air Box to the inner fender using three of the OEM bolts removed in step 4.



15. Tighten the two Hump Hose Clamps. On the turbo inlet.



16. Reconnect the Mass Air Flow sensors. Note: the Extension Harness is to be routed underneath the Intake Tube.



17. Install the Airaid Synthamax Filter onto the Intake Tube inside of the Cold Air Box. Install the Weather Strip onto the top edge of the Cold Air Box with the contour rolling away from the filter.



18. Double check your work!
Make sure there is no foreign material in the intake path. Make sure all clamps, hoses, bolts, and screws are tight. Double check the hood clearance!
Reconnect the negative battery cable!

Thank you for purchasing the Airaid Intake System. Contact Airaid @ (800) 498-6951 8:00 AM - 5:00 PM MST weekdays for questions regarding fit or instructions that are not clear to you. Your Airaid Intake System was carefully inspected and packaged. Check that no parts are missing, or were damaged during shipping. If any parts are missing, contact Airaid. The air filter element is protected from direct exposure to water and debris; care should be taken not to drive through deep water. WATER INGESTION IS THE DRIVERS RESPONSIBILITY! The air filter is reusable and should be cleaned periodically.

Before!



After!



SynthaMax

Do Not Oil

Synthamax Air Filters do not require oil. Service air filter as needed by cleaning with common non-petroleum all-purpose household cleaner and water. Simple Green®, Formula 409® or equivalent works great. Apply cleaner to outside of air filter and allow to soak. Then flush filter clean from the inside out with a garden hose and repeat steps if necessary. Do not apply high pressure water or air to clean filter. Allow filter to air dry and reinstall.