



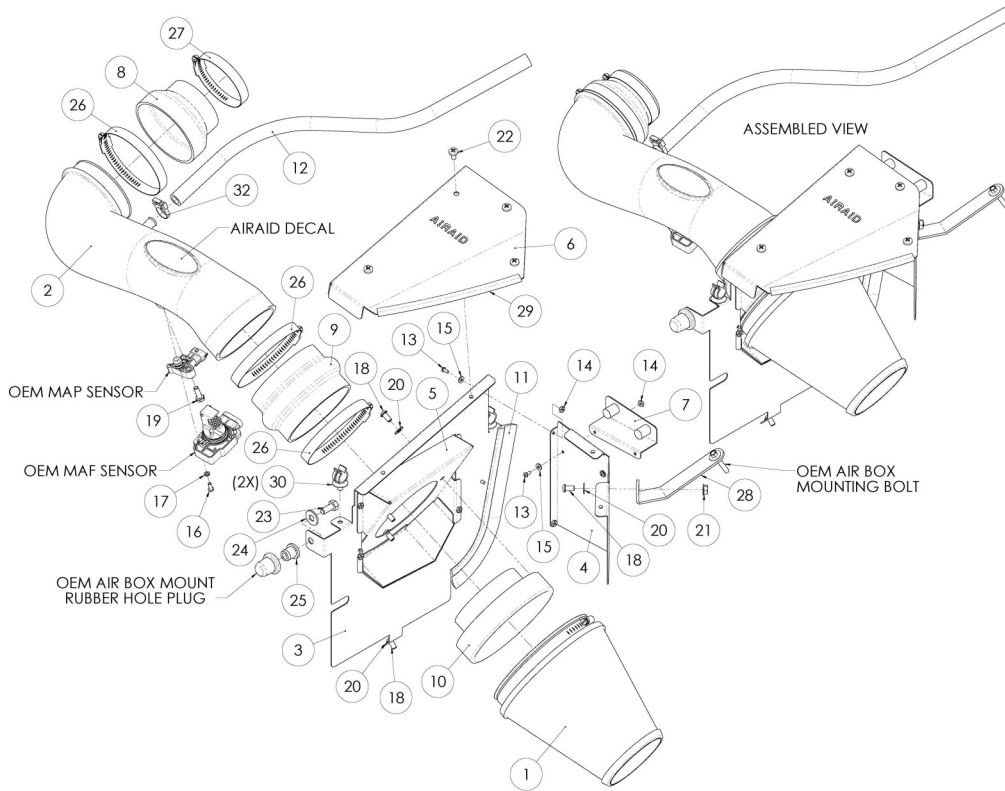
Installation Instructions

For Part Numbers:

- 250-255 700-495 Airaid Oiled Media Filter
- 251-255 701-495 SynthaMax Dry Media Filter - Red
- 252-255 702-495 SynthaMax Dry Media Filter - Black
- 253-255 703-495 SynthaMax Dry Media Filter - Blue

2009-11 Cadillac CTS 3.0L V6

Component Identification

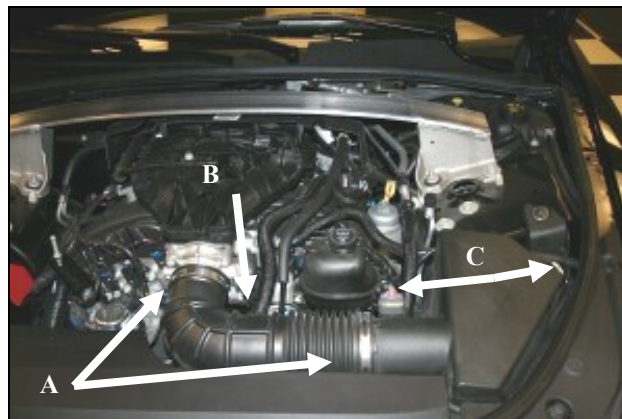


1.	Airaid Premium Filter	1
2.	Airaid Intake Tube	1
3.	MAF Panel	1
4.	Rear Panel	1
5.	Adapter Panel	1
6.	Top Cover	1
8.	Silicone Reducer Coupler	1
9.	Silicone Hump Hose	1
10.	Filter Adapter	1
11.	Weather Strip 9 3/4"	1
12.	1/2" x 26" Breather Hose	1
13.	6-32 x 5/16" Phillips Head Screw	8
14.	6-32 Kep Nut	8
15.	#6 Flat Washer	8
16.	8-32 x 5/8" Button Head Screw	2
17.	#8 Split Lock Washer	2
18.	1/4-20 x 1/2" Button Head Screw	5
19.	1/4-20 x 3/4" Hex Bolt	1
20.	1/4" Flat Washer	5
21.	1/4-20 Serrated Nut	1
22.	1/4-20 x 1/2" Phillips Screw (Black)	4
23.	5/16-18 x 3/4" Hex Bolt	1
24.	5/16" Flat Washer	1
25.	5/8" Well Nut	1
26.	#64 Hose Clamp	3
27.	#48 Hose Clamp	1
28.	Bracket	1
29.	Rubber Edge Trim 8"	1
30.	5/8" Hose Fir Tree Anchor	2
31.	Edge Clip Cable Tie	2
32.	Black Speed Clamp	1

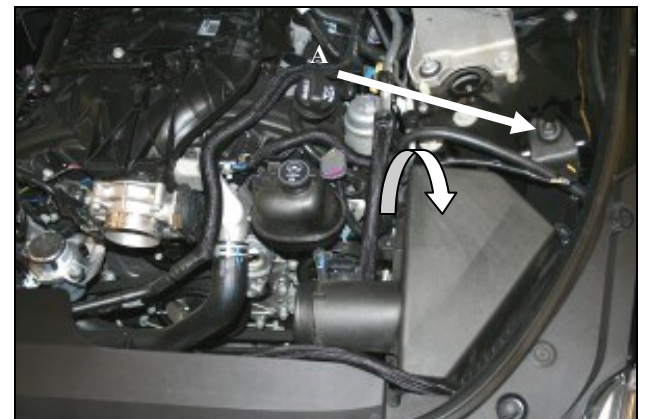
Full color instructions can be viewed on our web site at Airaid.com. Use the **Product Search** function to find your part number, and click **View Details**.



1. **Disconnect the negative battery cable.** Remove the engine and shock tower covers, if so equipped, by simply pulling up on them, and sliding out from the vehicle. These will be reused later in step 16.



2. A) Loosen the hose clamps on the factory intake tube. B) Disconnect the breather line and remove the factory intake tube. C) Disconnect the Mass Air Flow and MAP sensors.



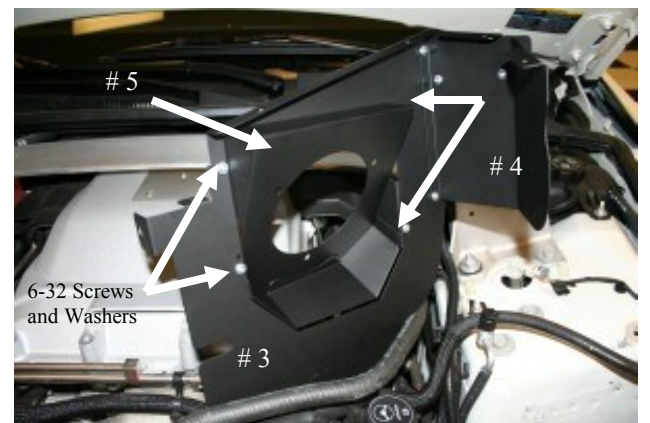
3. A) Remove the factory fender bolt securing the air box assembly. Next pull out the coolant line from atop the air box lid and gently rotate the air box assembly towards the front of the vehicle. The air box assembly is now free and should be removed from vehicle.



4. Use caution not to loose the factory core support grommet while removing the air box assembly. It will be needed in step 13.



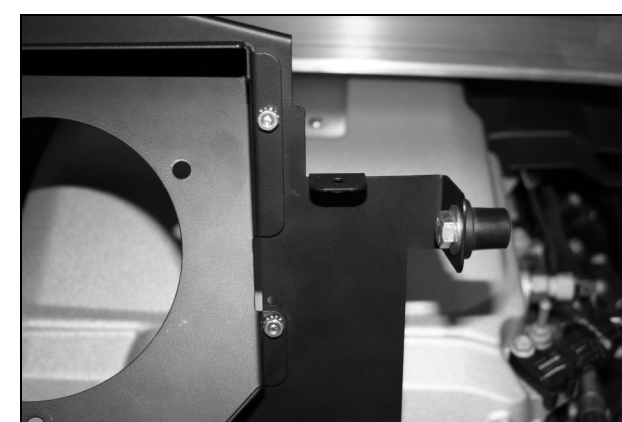
5. Locate the pre existing hole in the chassis and tap it for a 1/4-20 bolt. Use a 1/4-20 NC tap with anti-seize lube or equivalent, and follow the 1/4 turn forward, 1/2 turn back rule. This will ensure that clean threads will be cut into the hardened steel.



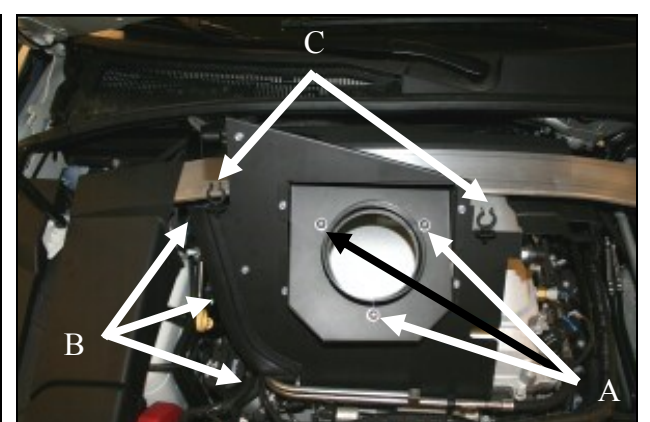
6. Install the Adapter Panel (#5) to the MAF Panel (#3) as shown using four 6-32 screws (#12), 6-32 Kep nuts, and #6 flat washers (#14). Attach the Rear Panel (#4) to the MAF Panel using two 6-32 screws.



7. Attach the OEM Cover Bracket (#7) to the Rear Panel as shown using the remaining two sets of 6-32 hardware



8. Attach the 5/8" Well Nut (#25) to the vertical MAF Panel tab as shown using the 5/16 Hex Bolt (#23) and the 5/16" flat washer (#24).



9A) Install the Filter Adapter onto the MAF panel using three 1/4-20 Button Head screws (#18) and 1/4" Flat washers (#17). B) Attach the Weather Strip (#11) to the curved edge of the MAF Panel. C) Insert the 5/8" hose anchors (#30) into the two horizontal tab holes on the MAF panel.

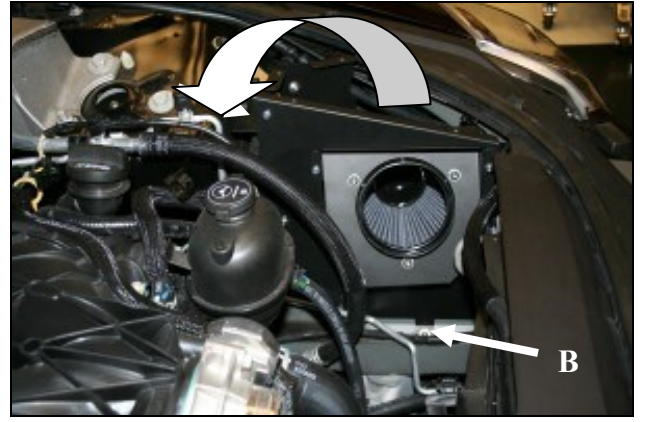
Refer to the Exploded View Drawing for additional information on part locations and orientations.



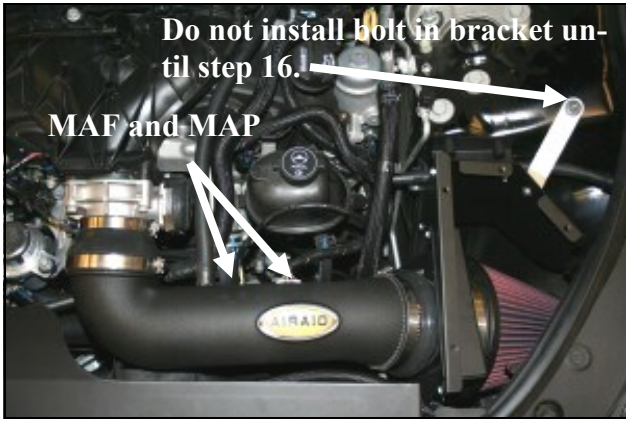
10. Transfer the air sensors from the Factory air box lid into the Airaid intake tube(#2). **Do not use factory hardware!** Secure the MAF sensor using the two #8-32x 1/2 screws (#16) and Lock Washers (#17), and the MAP sensor with the 1/4-20x3/4 bolt (#19). Install the Reducer Coupler and one #64 clamp(#26) and the #48 (#27) clamp on the 90 deg bend of the Intake Tube. Install the Hump Hose (#9) and 2 #64 clamps(#26) on the opposite end of the Intake Tube.



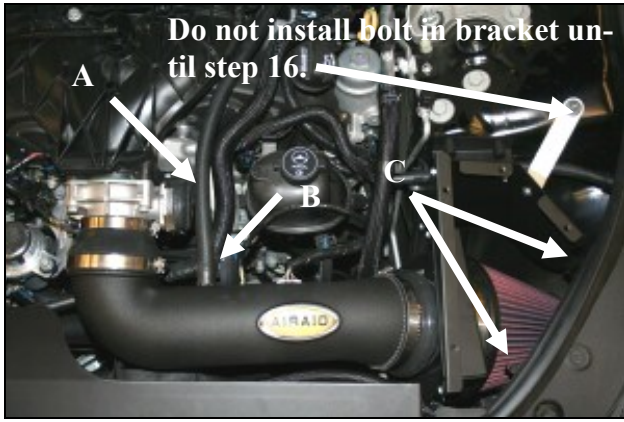
11. Install the Bracket (#28) on to the Rear Panel (#3) as shown using one 1/4-20 Button Head Screw (#17), 1/4" Flat Washer (#20), and 1/4" Serrated Nut(#21). Complete the assembly by attaching the Airaid Premium Filter (#1) to the Filter Adapter (#10).



12. A) Lower the Airaid Performance Air box assembly into the engine cavity. Insert the Well Nut into the Factory core support grommet and rotate the assembly rearward until the bracket rests on the shock tower and the MAF panel's lower tab hole is lined up with the Tapped Chassis bolt hole from step 5. B) Secure the assembly by using the 1/4-20x 3/4 Bolt(#19).



13. Install the Airaid Intake Tube assembly onto the filter adapter first, and then onto the throttle body. Adjust for fit, and tighten all the hose clamps. Next, reconnect the MAF and MAP sensors.



14. A) Replace the factory breather line on the valve cover with the 26" Airaid Breather Hose(#12). B) Secure the breather hose to the intake tube nipple using the black Speed Clamp (#32). C) Slide the Edge Clip Cable Ties (#31) about 6" apart along the fender pinch weld and return the coolant line to it's original location. Secure the coolant line using the cable ties and trim off excess.

Double check your work!

Make sure there is no foreign material in the intake path. Make sure all clamps, hoses, bolts, and screws are tight. Double check the hood clearance.



15. A) Install the 11" Weather Strip (#11) onto the curved edge of the top cover (#6) and install the top cover onto the Airaid filter box using the four 1/4-20 Black screws.(#22). B) Line up the intake bracket with the fender bolt hole, and secure the assembly using the factory bolt. Reinstall the Factory engine and shock tower covers. **Note: These steps must be performed in order to avoid difficulty with bolt hole alignment.**

Reconnect the negative battery cable.

Thank you for purchasing the Airaid Intake System. Contact Airaid @ (800) 498-6951 8:00 AM - 5:00 PM MST weekdays for questions regarding fit or instructions that are not clear to you. Your Airaid Intake System was carefully inspected and packaged. Check that no parts are missing, or were damaged during shipping. If any parts are missing, contact Airaid. The air filter element is protected from direct exposure to water and debris; care should be taken not to drive through deep water. WATER INGESTION IS THE DRIVERS RESPONSIBILITY! The air filter is reusable and should be cleaned periodically.

FILTER IDENTIFICATION

700-495 Airaid Oiled Media
702-495 Airaid SynthaMax Dry Media - Black

701-495 Airaid SynthaMax Dry Media - Red
703-495 Airaid SynthaMax Dry Media - Blue

For your Oiled media filter we suggest using the AIRAID Filter Tune-Up Kit!



P/N 790-551 Aerosol Spray
P/N 790-550 Squeeze Spray



Do Not Oil

Synthamax Air Filters do not require oil. Service air filter as needed by cleaning with common non-petroleum all-purpose household cleaner and water. Simple Green®, Formula 409® or equivalent works great. Apply cleaner to outside of air filter and allow to soak. Then flush filter clean from the inside out with a garden hose and repeat steps if necessary. **Do not apply high pressure water or air to clean filter. Allow filter to air dry and reinstall.**