



Installation Instructions

For Part Numbers :

- 300-150 700-445 Airaid Oiled Media Filter
- 301-150 701-445 SynthaMax Dry Media Filter - Red
- 302-150 702-445 SynthaMax Dry Media Filter - Black
- 303-150 703-445 SynthaMax Dry Media Filter - Blue

2003-05 Dodge Ram 1500/2500/3500
5.7L V8

Component Identification

1.	Airaid Premium Filter	1
2.	Cool Air Dam	1
3.	Weather Strip 33 1/4"	1
4.	Modular Intake Tube	1
5.	Urethane Hump Hose	1
6.	Urethane Coupler	1
7.	#16 Speed Clamp	2
8.	#19 Speed Clamp	1
9.	#22 Speed Clamp	2
10.	#24 Speed Clamp	1
11.	Black Rubber Cap Large	1
12.	Black Rubber Cap Small	1
13.	#60 Hose Clamp	4
14.	Rubber Grommet	1
15.	1/2" x 4 1/2" Hose	1
16.	Black Connector Fitting	1



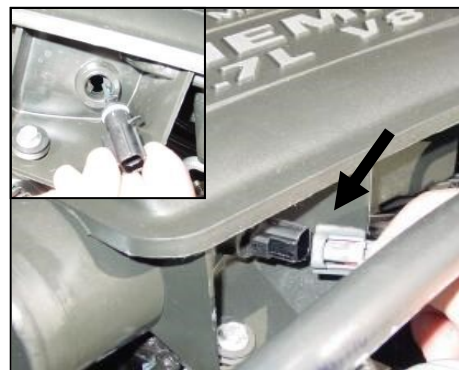
Full color instructions can be viewed on our web site at Airaid.com. Use the **Product Search** function to find your part number, and click **View Details**.



1. Disconnect the negative battery cable, and remove the factory "accordion" style intake hose by loosening the two factory clamps.



2. Loosen the two 10mm bolts securing the factory resonator to the intake manifold.



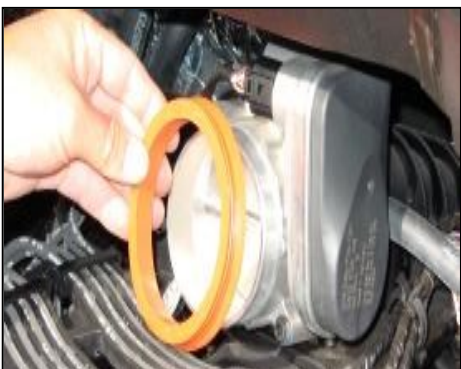
3. Disconnect the air temperature sensor connector on the front of the factory resonator. Next, twist the temperature sensor and remove it from the factory intake resonator. (Retain for later use with Airaid intake).



4. **2003 Models:** Disconnect & remove the crankcase vent hose from the front of the factory resonator.



5. **2004-05 Models:** disconnect breather hose from factory air box lid.



6. Remove the factory resonator and rubber seal from throttle body.



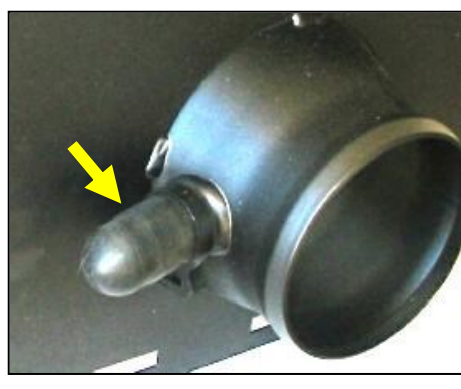
7. Unclip & remove the factory air box lid and factory air filter.



8. Position the Airaid Cool Air Dam in place of the original air box lid. Snap in place.



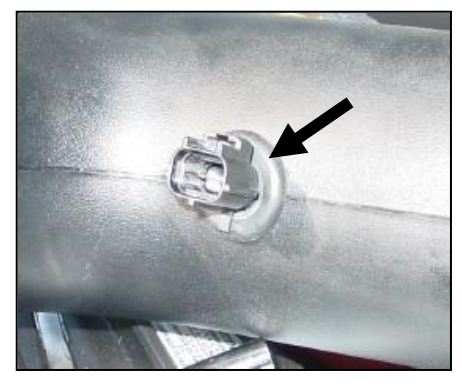
9. Mount the Airaid Premium filter inside the Cool Air Dam & secure with hose clamp provided.



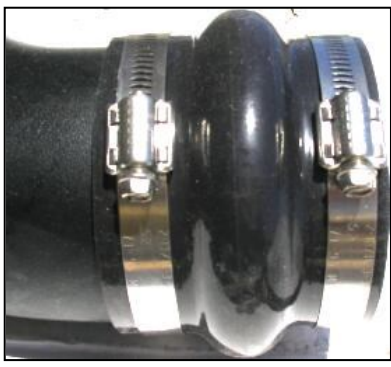
10. **2003 Models Only:** Slip the black rubber cap over the nipple on the Cool Air Dam and secure using the #19 black speed clamp provided.



11. **2004-05 Models Only:** Mount factory breather hose to the nipple on the Cool Air Dam and secure using the #24 black speed clamp provided.



12. Install the rubber grommet into the hole on the back side of the Airaid tube & insert the factory air temp sensor into grommet.



13. Install the urethane hump hose on the long end of the Airaid tube using two of the #60 hose clamps provided. Leave loose for final assembly.



14. Slide the urethane coupler onto the throttle body and secure using a #60 hose clamp provided & install the 2nd #60 hose clamp on the other end of the coupler, leave loose for final assembly.



15. Slide the Airaid tube with hump hose into the Airaid Cool Air Dam first, and then slide the other end into the throttle body coupler. (Note: The Airaid tube should be flush against throttle body with a gap between the tube and Cool Air Dam assembly for engine movement.) After inspection, adjust the Airaid tube, coupler, and hump hose and tighten all hose clamps



16. Re-connect air temperature sensor connector.



17. 2003 Models Only: Use the plastic barbed fitting and 1/2" hose provided; connect factory vent hose to Airaid intake tube & secure the 1/2" hose with (2) #16 black speed clamps provided. Secure factory vent hose with (2) #22 black speed clamps provided.



18. 2004-05 Models Only: Slide the black rubber cap over the nipple near the throttle body end of the Airaid Tube.



19. Install weather strip along the top rim of the Airaid Intake System. (Hint: start the install at the top corner of the cold air dam)

20. Check for any foreign objects or debris in the intake path.

21. Double check your work to be certain that all nuts, bolts, and clamps are securely fastened.

22. Reconnect the negative battery cable.

Thank you for purchasing the Airaid Intake System. Contact Airaid @ (800) 498-6951 8:00 AM - 5:00 PM MST weekdays for questions regarding fit or instructions that are not clear to you. Your Airaid Intake System was carefully inspected and packaged. Check that no parts are missing, or were damaged during shipping. If any parts are missing, contact Airaid. The air filter element is protected from direct exposure to water and debris; care should be taken not to drive through deep water. WATER INGESTION IS THE DRIVERS RESPONSIBILITY! The air filter is reusable and should be cleaned periodically.

FILTER IDENTIFICATION

700-445 Airaid Oiled Media
702-445 Airaid SynthaMax Dry Media - Black

701-445 Airaid SynthaMax Dry Media - Red
703-445 Airaid SynthaMax Dry Media - Blue

For your Oiled media filter we suggest using the AIRAID Filter Tune-Up Kit!



P/N 790-551 Aerosol Spray
P/N 790-550 Squeeze Spray



SynthaMax

Do Not Oil

Synthamax Air Filters do not require oil. Service air filter as needed by cleaning with common non-petroleum all-purpose household cleaner and water. Simple Green®, Formula 409® or equivalent works great. Apply cleaner to outside of air filter and allow to soak. Then flush filter clean from the inside out with a garden hose and repeat steps if necessary. Do not apply high pressure water or air to clean filter. Allow filter to air dry and reinstall.