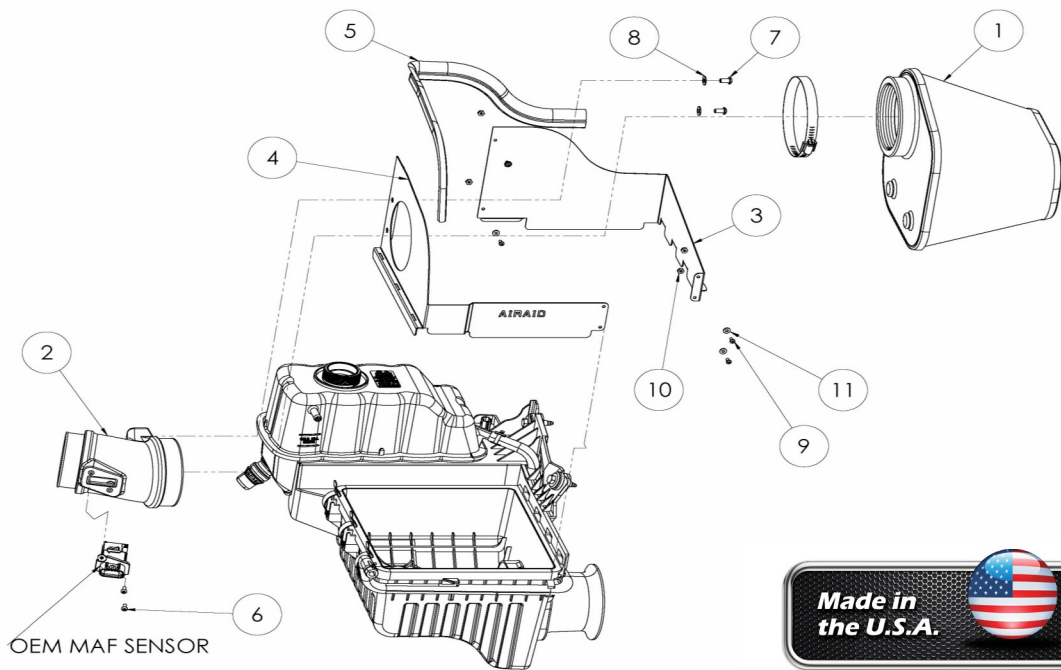




INTAKE SYSTEMS



Installation Instructions Part Number 400-239 2011-12 Ford F-150 3.7L and 5.0L Motors 2011 3.5l EcoBoost V6

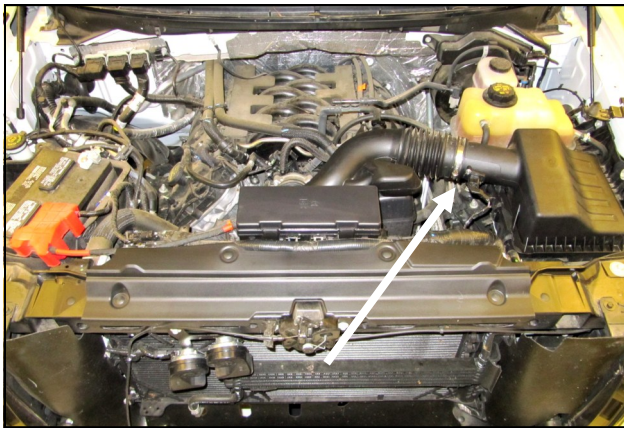
Packing List:

#1	720-478	Airaid Premium Filter	1
#2	KIT239T	Air Meter Tube	1
#3	KIT299RPC	Rear Panel	1
#4	KIT299FPC	Front Panel	1
#5	KITWSTRIP02	Weather Strip 22"	1
	KIT239HP	Hardware & Instructions	1
#6	KIT15BHC3050	#8-32 x 1/2" Button Head Screw	2
#7	KIT15DHC3050	1/4-20 x 1/2" Button Head Bolt	2
#8	KIT09FWZ019	1/4" Flat Washer	2
#9	KIT6C31MXPPZ	6-32 x 5/16" Pan Head Screw	4
#10	KIT6CNKEPZ	#6 Kep Nut	4
#11	KIT6NWSAPZ	#6 Flat Washer	4
#12	KITBIT01	T-20 Torx Bit	1

Tools Required For Installation:

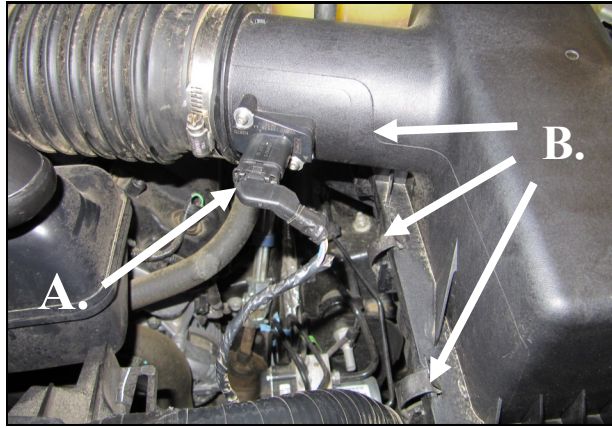
5/32", 9/32" Allen Wrench
5/16" Socket
Ratchet & Extension, and
Standard and Phillips Head Screwdrivers

NOTE: These instructions depict an installation being performed on a 5.0l F-150 and is meant to be a guide for all other makes and models listed. While some details may vary from vehicle to vehicle, the general install procedure remains the same.



Disconnect The Negative Battery Terminal!

1. Loosen the hose clamp on the airbox side of the factory air intake tube.



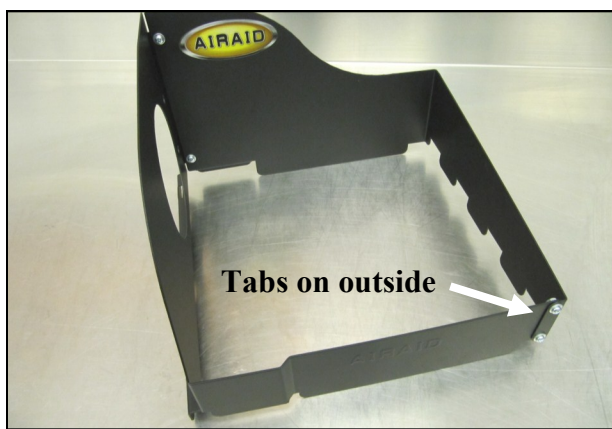
2. **A.** Disconnect the Mass Air Flow meter in the factory airbox top.
B. Unfasten the Three clips on the left side of the airbox.



3. Slide the factory intake away from the airbox. Lift up and slide the airbox tabs out of the slots in the lower half and set aside.



4. Remove the Factory air filter.



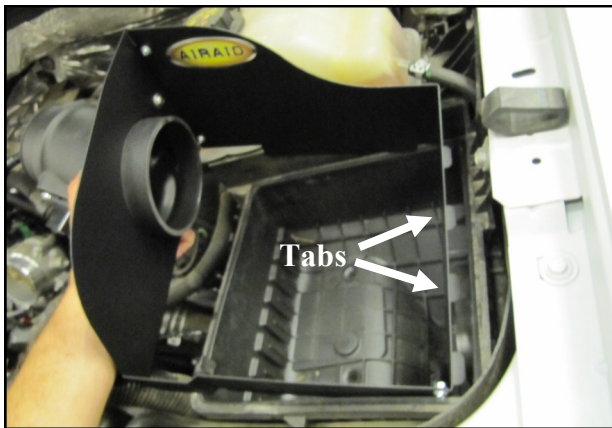
5. Assemble the Front and Rear Panels (# 3 & #4) as shown with the tabs on the outside of the assembly. Use the four 6-32 Button Head Screws (#9), #6 Flat Washers (#11), and #6 Kep Nuts (#10) to secure the assembly.



6. Install the Air Meter Tube (#2) into the Panel Assembly and secure using the two 1/4-20 Button Head Screws (#7), and 1/4" Flat Washers (#8).



7. Transfer the factory Mass Air Flow meter into the Airaid Air Meter Tube and secure using the two #8-32 Button Head Screws (#6).
Do Not Use The Factory Hardware !



8. Install the Airaid intake assembly onto the factory airbox bottom. Insert the Panel tabs into the slots first, then lower the tube side down and fasten the three clips.



9. Slide the factory intake tube onto the Airaid Tube and tighten the clamp. Reconnect the Mass Air Flow sensor.



10. Install the Weather Strip (#5) to the Panel assembly as shown, with the contour rolling away from the filter area.



11. Install the Airaid Premium Filter (#1) on to the Air Meter Tube and tighten the clamp.

18. Double check your work!

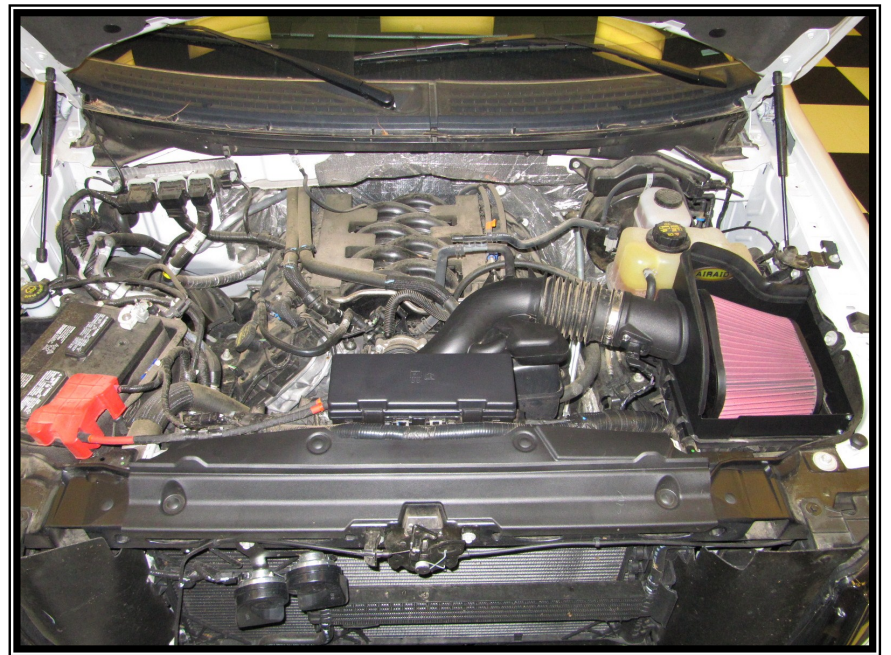
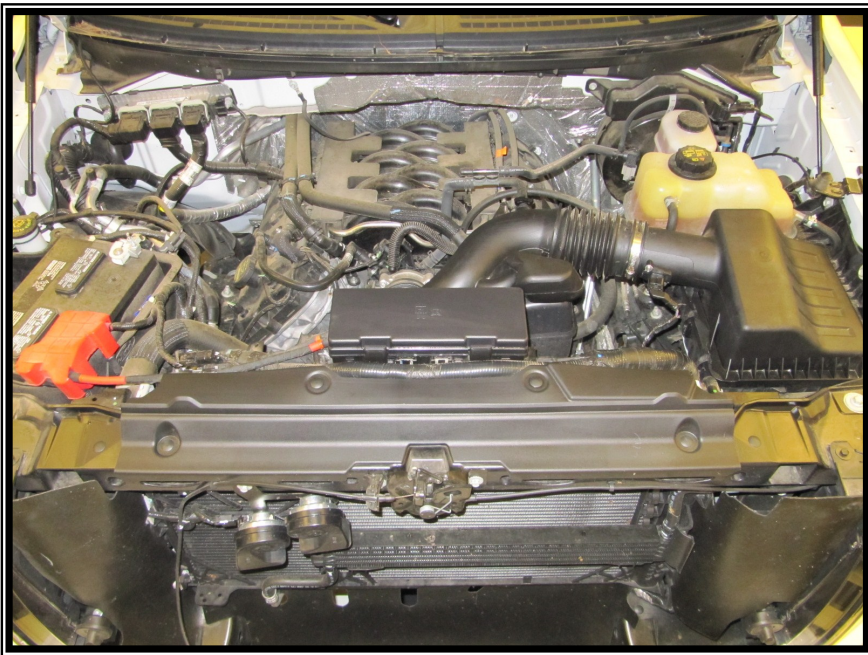
Make sure there is no foreign material in the intake path. Make sure all clamps, hoses, bolts, and screws are tight. Double check the hood clearance!

Reconnect the negative battery cable!

Thank you for purchasing the Airaid Intake System. Contact Airaid @ (800) 498-6951 8:00 AM - 5:00 PM MST weekdays for questions regarding fit or instructions that are not clear to you. Your Airaid Intake System was carefully inspected and packaged. Check that no parts are missing, or were damaged during shipping. If any parts are missing, contact Airaid. The air filter element is protected from direct exposure to water and debris; care should be taken not to drive through deep water. WATER INGESTION IS THE DRIVERS RESPONSIBILITY! The air filter is reusable and should be cleaned using the Airaid Filter Tune-Up Kit periodically.

Before!

After!



Don't Forget Your AIRAID Filter Tune-Up Kit!



P/N 790-551 Aerosol Spray
P/N 790-550 Squeeze Spray



Instructions Revision
Date: 12/19/11