



350 S. St. Charles St. Jasper, In. 47546

Ph. 812.482.2932 Fax 812.634.6632

www.ridetech.com

Part # 11257199
62-67 Nova Rear AirBar

Components:

2	90000534	Lower axle mounts
1	90000535	Lower shockwave mount
1	90000536	Lower shockwave mount
2	90000144	Axle tabs
2	90000524	Axle tabs
1	90000539	Upper bar mount
1	90000540	Upper bar mount
2	90000533	Upper bar bolt plate
1	90000537	Upper cross member
2	90001001	Upper bar – TW 7.375" (C-C length 9.50")
2	90001030	Lower bar – WW 25.00"
4	90001085	Poly bushing halves for lower bar
4	90000538	Lower bar bushing sleeve
2	90001584	Upper bar rod end
2	99752004	3/4"-16 jam nut – for rod end
6	90001942	Rubber bushings pressed into bars & rod ends
2	90002285	Square corner U bolt - Upper cross member to car

Hardware Kit: (Part # 99010018)

6	5/8 x 2 3/4 SAE Gr.8 bolt	Bars to cross member and brackets
6	5/8 SAE Gr.8 Nylok Jam nut	Bars to cross member and brackets
12	3/8 USS Nylok nut	Upper bar mount and cross member
12	3/8 SAE flat washer	Upper bar mount and cross member
4	1/2 x 2 1/4 Gr. 8 SAE bolt	Shockwaves to mounts
4	1/2 Gr.8 SAE thin Nylok nut	Shockwaves to mounts
4	5/8 x 1 1/4 SAE Gr8 bolt	Shockwave brackets to axle brackets
4	5/8 SAE Nylok nut	Shockwave brackets to axle brackets
8	7/16 SAE Nylok nut	U-bolts

AirBAR[®]

by Air Ride Technologies

1. Raise the vehicle to a safe and comfortable working height. Use jack stands to support the vehicle with the suspension hanging freely.
2. Support the axle and remove the leaf springs, shocks, pinion snubber, and tail pipes. Refer to the factory service manual for proper disassemble procedures. Keep the factory upper shock bolts and front leaf spring mounting bolts.



1. The pinion snubber mount must be cut on the line shown in the picture. This allows more clearance of the pinion for maximum drop.



2. Remove the gas tank sending unit wire from the tank and pull it into the trunk.

3. This raised area around the gas tank sending unit wire must be flattened to allow the upper bar mount to sit against the pan. The area marked in chalk can either be pie cut, hammered flat and welded back together or cut out completely.



4. The upper bar mount will bolt to the bottom of the car using the factory shock bolts and locates off the factory shock mount.

Note: The bar mount will point towards the outside of the car. This is the passenger side.

5. Using the bracket as a template drill 4 7/16" holes through the pan.



6. The upper bar bolt plate can be dropped into place from the trunk. The bracket will be clamped into place using 3/8" nylocs and flat washers.



7. Lower the axle enough to slide the upper crossmember into place. The frame is wider towards the rear of the car as is the crossmember. Push it forward until it is tight between the frame rails, but make sure it is square. Drill two holes with a 7/16" drill bit.



8. Remove the crossmember and drop the 3/8" U-bolt through the holes. Reinstall crossmember and tighten with 3/8" nylocs and flat washers.

Shown below:

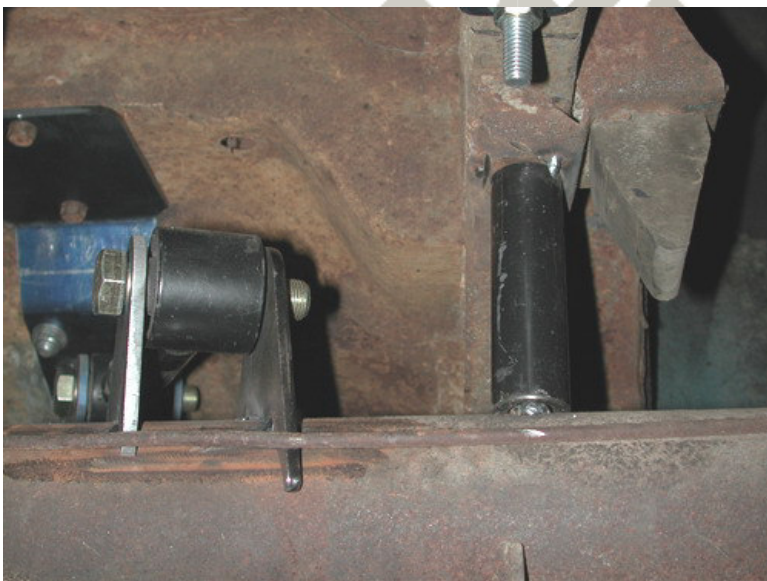
9. Bolt the lower axle bracket to leaf spring plate on the bottom of the axle using the new 7/16" nylocs supplied. Do not tighten until the lower bar is in place.

10. Install the lower arm (the longer one) into the oem leaf spring hanger using the factory hardware. This is a polyurethane bushing and is lubricated at the factory with lithium grease. Any future lubrication can be done with any non-petroleum based lubricant.



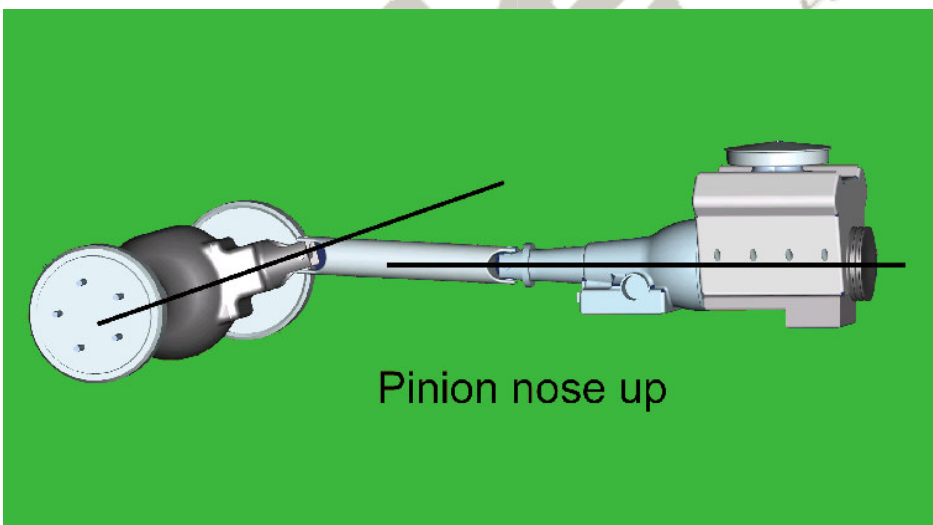
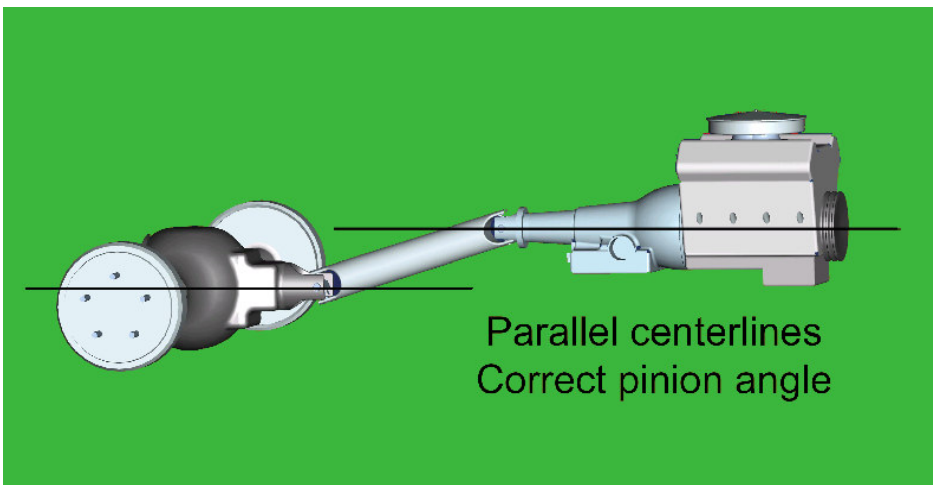
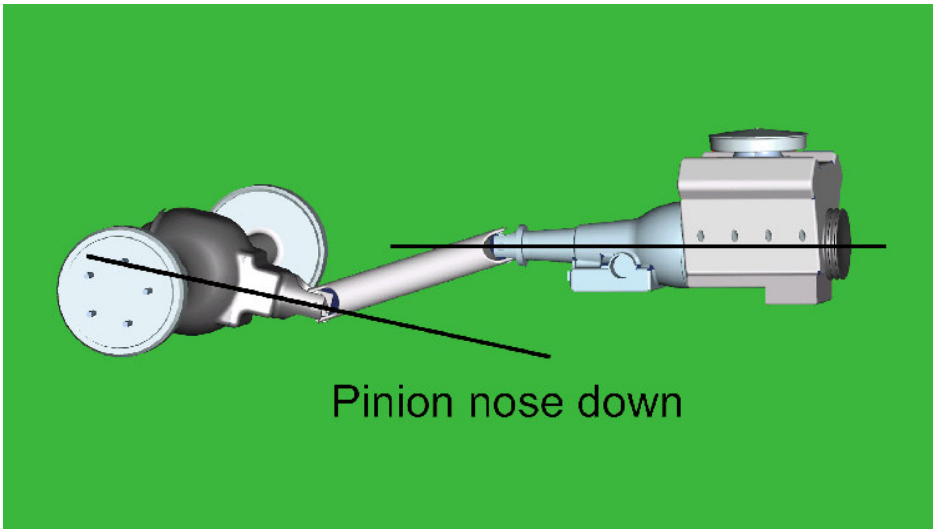
11. The other end of the lower bar will attach to the axle bracket using 5/8" x 2 3/4" bolts and nylocs. This is a rubber bushing and does not require lubrication. **Do not tighten the bar bolts yet.**

12. The lower Shockwave mount is bolted to the lower two holes of the axle bracket with two 5/8" x 1 1/2" bolts and nylocs. The U shaped portion of the bracket will face toward the inside of the vehicle.



13. Bolt the axle tabs to the upper bar as shown in the picture. Then bolt the other end to the upper bar mount. **Do not weld the tabs yet.**

14. Before welding the tabs you must center the axle and set the pinion angle. This must be done at ride height. Raise the axle until the is 14 1/2" from center eye to center eye on the Shockwave mounts, this is ride height. One trick that we use to maintain the settings are to tack weld a 4" spacer between the axle and the frame.



15. How do you set the pinion angle? On a single-piece shaft you want to set it up where a line drawn through the center of the engine crankshaft or output shaft of the transmission and a line drawn through the center of the pinion are parallel to each other but not the same line.

A simple way to do this is to place a digital angle finder or dial level on the front face of the lower engine pulley or harmonic balancer. This will give you a reading that is 90 degrees to the crank or output shaft unless you have real problems with your balancer. At the other end, you can place the same level or angle finder against the front face of the pinion yoke that is also at 90 degrees to the centerline. If you rotate the yoke up or down so both angles match, you have perfect alignment.

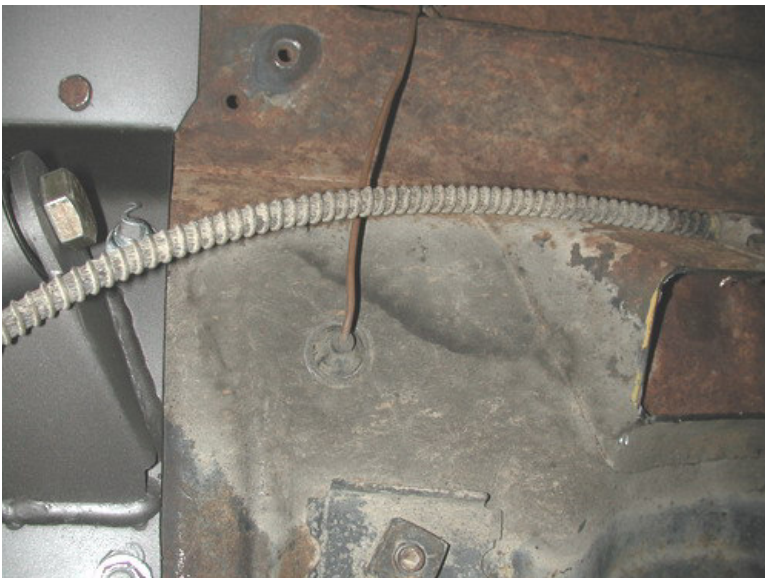
Road testing will tell you if you have it right. If you accelerate and you get or increase a vibration, then the pinion yoke is too HIGH. Rotate it downward in small increments of a degree or two until the problem goes away. If you get or increase a vibration when decelerating, then the pinion yoke is too LOW. Rotate it upward to correct it.



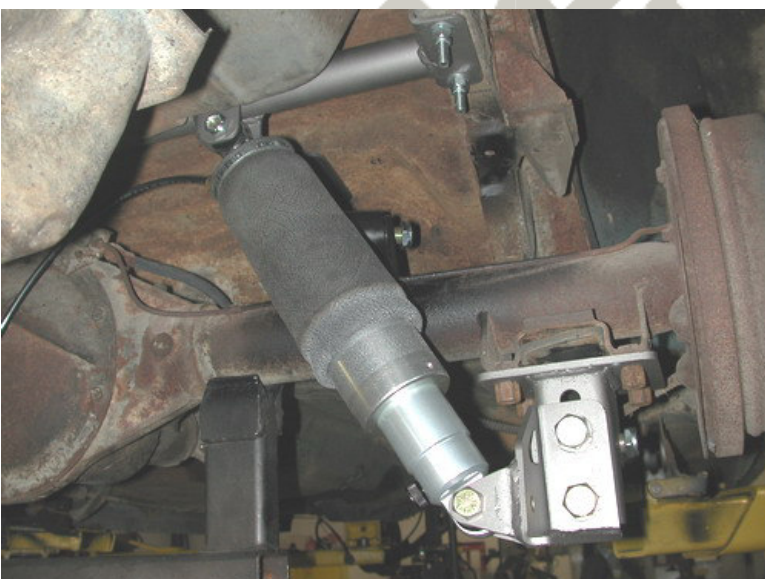
16. Axle center is best determined by dropping a plum on the outside of the quarter panel and measuring into the axle. This must be done with the car level from side to side.

17. Once everything has been double-checked you can tack weld the tabs the axle. After removing the upper bar from the tabs you can finish welding the tabs. This will prevent you from frying the bushings.

18. Reinstall the upper bar and snug all bar bolt with the axle still at ride height.
The 4" spacer can now be removed.



19. A new 3/4" hole must be drilled for the sending unit wire. You can reuse the original grommet.



20. Apply thread sealant the air fitting and screw it into the top of the Shockwave.

21. The Shockwave will be secured into place with 1/2" x 2 1/4" bolts and nylocs.

22. Check clearance with brake lines, parking brake and vent tubes.

23. The exhaust can either be rerouted under the axle or a turn down can be installed.

24. Ride height will be around 80 psi with about 3-4 clicks.