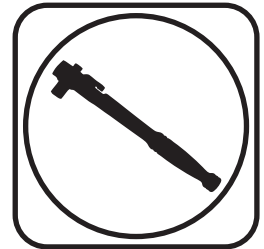




Part # 12299122 - 2015-2022 Ford F150 Rear Sway Bar



Recommended Tools



2015-2022 Ford F150 Rear Sway Bar Installation Instructions

Table of contents

| | |
|---------------|---------------------------------|
| Page 2..... | Included Components |
| Page 3..... | Hardware List & Getting Started |
| Page 4-8..... | Sway Bar Installation |
| Page 8..... | Final Tightening |

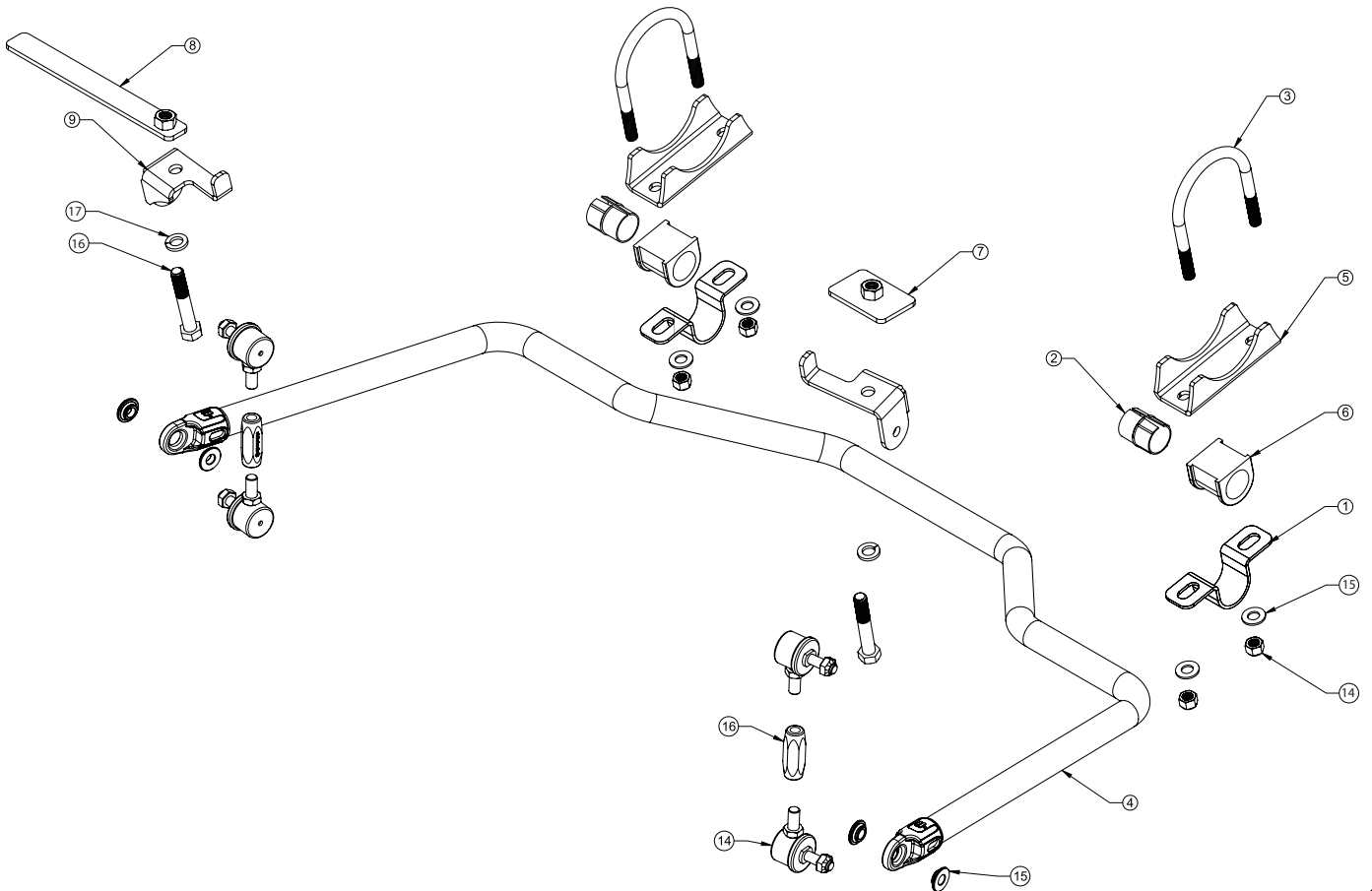
THIS SWAY BAR IS DESIGNED TO BE USED WITH THE REAR LOWERING KIT.





Major ComponentsIn the box

| Item # | Part # | Description | QTY |
|--------|----------|---------------------------------------------------------|-----|
| 1 | 90001250 | Sway Bar Bushing Strap | 2 |
| 2 | 70012402 | 1 1/2" Sway Bar Bushing Liner | 2 |
| 3 | 90000088 | 7/16"-20 U-Bolt, 3.25" Wide x 4.50" Long | 2 |
| 4 | 90003282 | Rear Sway Bar | 1 |
| 5 | 90003283 | Sway Bar Axle Bracket | 2 |
| 6 | 90002539 | Sway Bar Bushing | 2 |
| 7 | 90003284 | Rear Sway Bar Frame Mount Nut Plate - Driver | 1 |
| 8 | 90003285 | Rear Sway Bar Frame Mount Nut Plate - Passenger | 1 |
| 9 | 90003286 | Rear Sway Bar Frame Mount | 2 |
| 10 | 90002571 | 10mm 90 Degree End link | 4 |
| 11 | 90001258 | Sway Bar Link Adapter Bushing, 10mm | 4 |
| 12 | 90001262 | Sway Bar End link Spacer, 2.125: Long x 7/16"-20 Thread | 2 |
| 13 | 70014721 | 1 1/8" Clamp Collar - NOT SHOWN | 2 |





Hardware Kit# 99010171

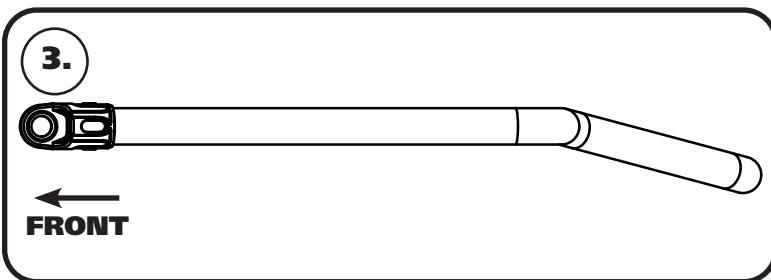
| Item # | Part # | Description | QTY |
|----------------------------------|----------|------------------------|-----|
| U-BOLT | | | |
| 14 | 99432007 | 7/16"-20 Nylok Nut | 4 |
| 15 | 99433005 | 7/16" SAE Flat Washer | 4 |
| SWAY BAR BRACKET TO FRAME | | | |
| 16 | 99501004 | 1/2"-13 X 3" Hex Bolt | 2 |
| 17 | 99503015 | 1/2" Split Lock Washer | 2 |
| | 90002263 | Red Loctite | 1 |

Getting Started.....

This sway bar kit utilizes a delrin liner in the sway bar bushing. The delrin liner allows the sway bar to move freely and quietly in the bushing. The delrin is self-lubricating, no lubrication is required.

THIS SWAYBAR ATTACHES TO THE AXLE AND FRAME.

1. Jack the vehicle up to a safe working height and support with jack stands. Make sure the jack stands are stable before working under the truck.
2. The rear flip kit needs to be installed before the rear sway bar.



3. **Diagram 3** shows how the sway bar will be positioned on the rear differential.



4. Open the delrin liner at the split and slip it over the sway bar. Position it in the center of the straight area that it will ride in. Do this on both ends of the sway bar.



Sway Bar Installation



5. Open the sway bar bushing at the split and slip it **OVER** the delrin liner. Do this on both delrin liners.



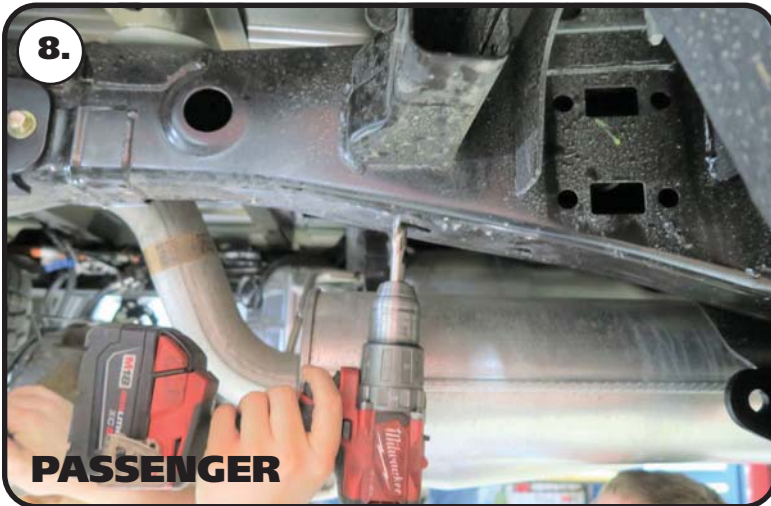
6. Install the bushing straps over the sway bar bushings.



7. The gas tank/shock crossmember will need to be drilled to attach the frame mount. We use the rear of the frame slot as a guide. Drill the crossmember straight above the frame slot using a 1/2" drill bit.



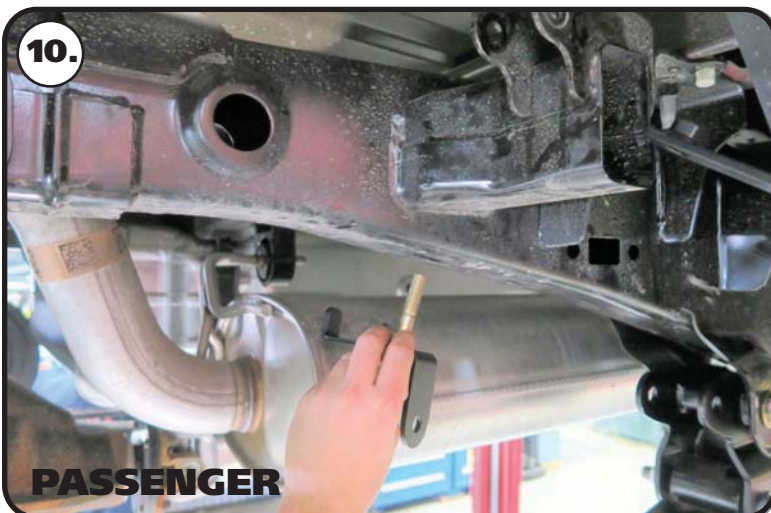
Sway Bar Installation



8. Drill the passenger side shock crossmember using a 1/2" drill bit. We use the back edge of the frame slot as a guide. Drill the whole straight up from the rear of the frame slot.



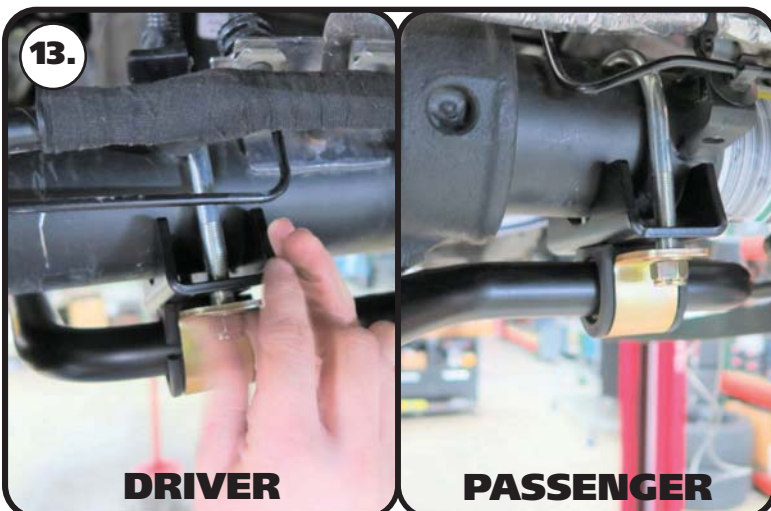
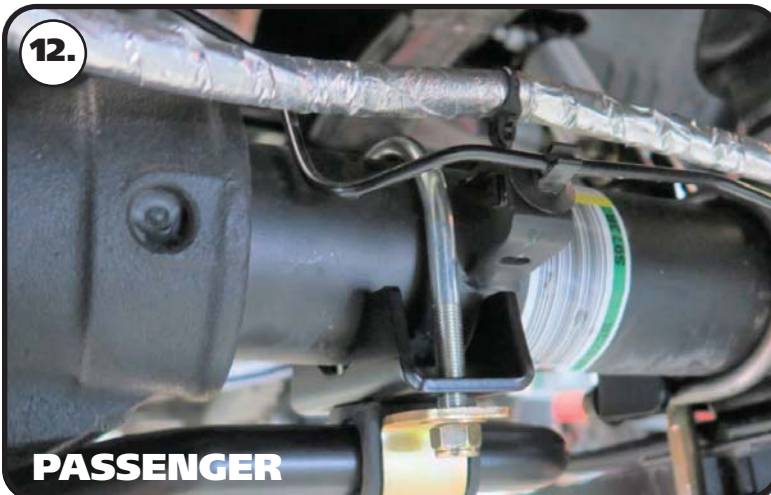
9. The frame mount will get attached to the frame using a 1/2"-13 x 3" bolt, 1/2" split lock washer, red loctite, and a nut plate. The frame mounts are the same for driver and passenger, but the nut plate are different. The frame mount has a tab that will index of the inside of the frame rail. Install a 1/2" split lock washer on a 1/2"-13 x 3" hex bolt and insert it into the frame mount. Apply red loctite to the threads of the bolt. Slip the SHORT nut plate into the driver crossmember. Position the frame mount on the frame with the 1/2" bolt inserted through the drilled hole and the frame tab on the inside of the frame rail. Thread the bolt into the nut plate and torque to 75 ft-lbs.



10. Repeat the above steps on the passenger side using the LONG nut plate to hold the frame mount.

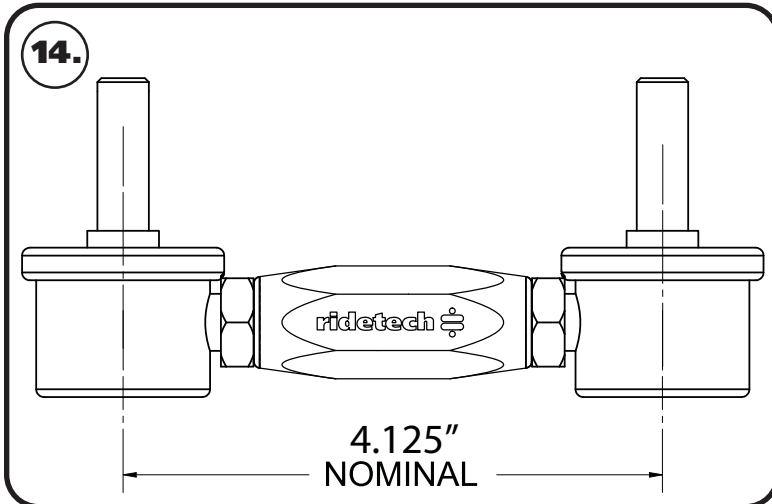


Sway Bar Installation





Sway Bar Installation



14. Set the Linkage to 4 1/8" center to center with the threaded studs pointed the same direction. Snug the jam nuts against the center adapter. Use **Diagram 14** as a reference.



15. Attach the linkage to the frame bracket with the threads of the end link pointing outward. Use the hardware on the linkage to attach it. Torque the nut to 37 ft-lbs. Repeat on the other side.



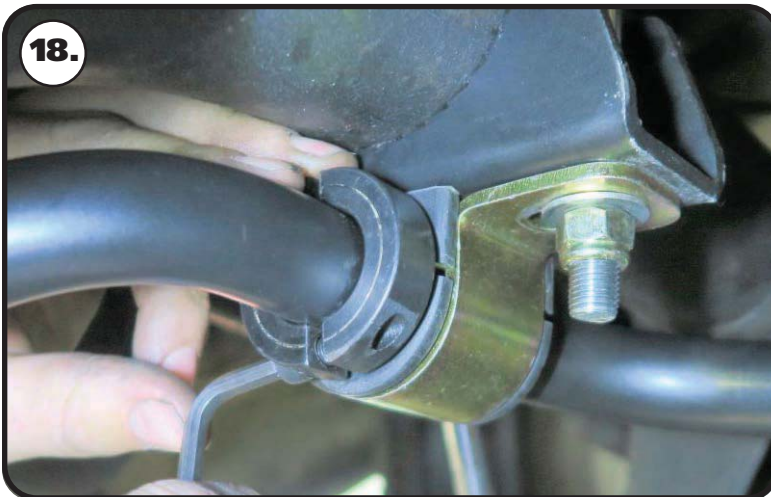
16. Install a T-Bushing on each of the bottom 90 degree end links. The t-bushings are installed with the large diameter against the shoulder of the end link. Insert the 90 degree end link/t-bushing into the swaybar end with the threads pointing outward.



Sway Bar Installation



17. Install a 2nd t-bushing with the small diameter into the swaybar. Install the nut and torque to 37 ft-lbs. Do this for both sides.



18. Install the locking rings on the inside of each bushing assembly. Use a hex key to take the locking ring apart. Reassemble it on the bar positioned next to the inside of the bushing assembly. Push the locking ring up against the bushing assembly and tighten.

Final Tightening

19. DOUBLE CHECK THE HARDWARE TO MAKE SURE IT IS TIGHT.