

Fits: 2019-UP RAM 1500 with OEM Dual Exhaust (New Body Style)

Engine Size: 5.7L

Cab Size: Quad Cab / Crew Cab



ALLOW VEHICLE TO COOL DOWN BEFORE WORKING ON ANY ENGINE / EXHAUST COMPONENTS.



REMOVE CONTENTS FROM BOX. VERIFY ALL PARTS ARE PRESENT.



READ INSTALLATION INSTRUCTIONS COMPLETELY BEFORE BEGINNING REMOVAL AND INSTALLATION



LIMITED LIFETIME WARRANTY



60-120 min



Cutting May be Required



PPE Kit Recommended



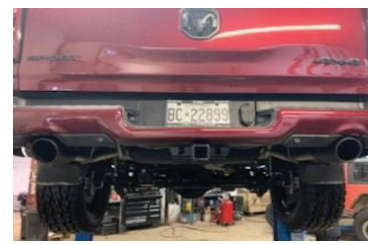
support@trailfx.com



1 866 638 4870

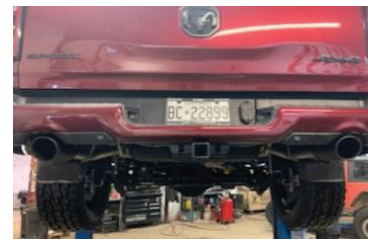
REMOVAL:

1. Allow plenty of time for your vehicle to cool down prior to starting. Exhaust systems reach high temperatures and may cause serious burns. Always wear appropriate safety equipment including goggles and gloves.
2. Read instructions prior to installation. Use a penetrating lubricant and spray the exhaust clamp nuts and all the isolation rubber mounts before removal and re-installation.
3. For easier installation, lay out the exhaust system according to the diagram.
4. Use a vehicle hoist to raise vehicle to proper working height. If a vehicle hoist is not available, raise the vehicle and securely support using jack stands. Use of a jack or stand to support the muffler when removing or installing is recommended.
5. Remove the right and left factory rear tailpipes by disconnecting the wire hangers from the OEM rubber mounts.
6. With a stand or a helper, remove OEM muffler hangers from OEM rubber hangers and detach the grounding wire from the extension pipe.
7. Remove the two nuts from the flange at the catalytic converter. With a helper, slowly lower exhaust system down towards the front of the vehicle and to the ground.
8. Remove the factory studs from the catalytic converter flange. Replacement bolts are provided for installation.

**INSTALLATION:**

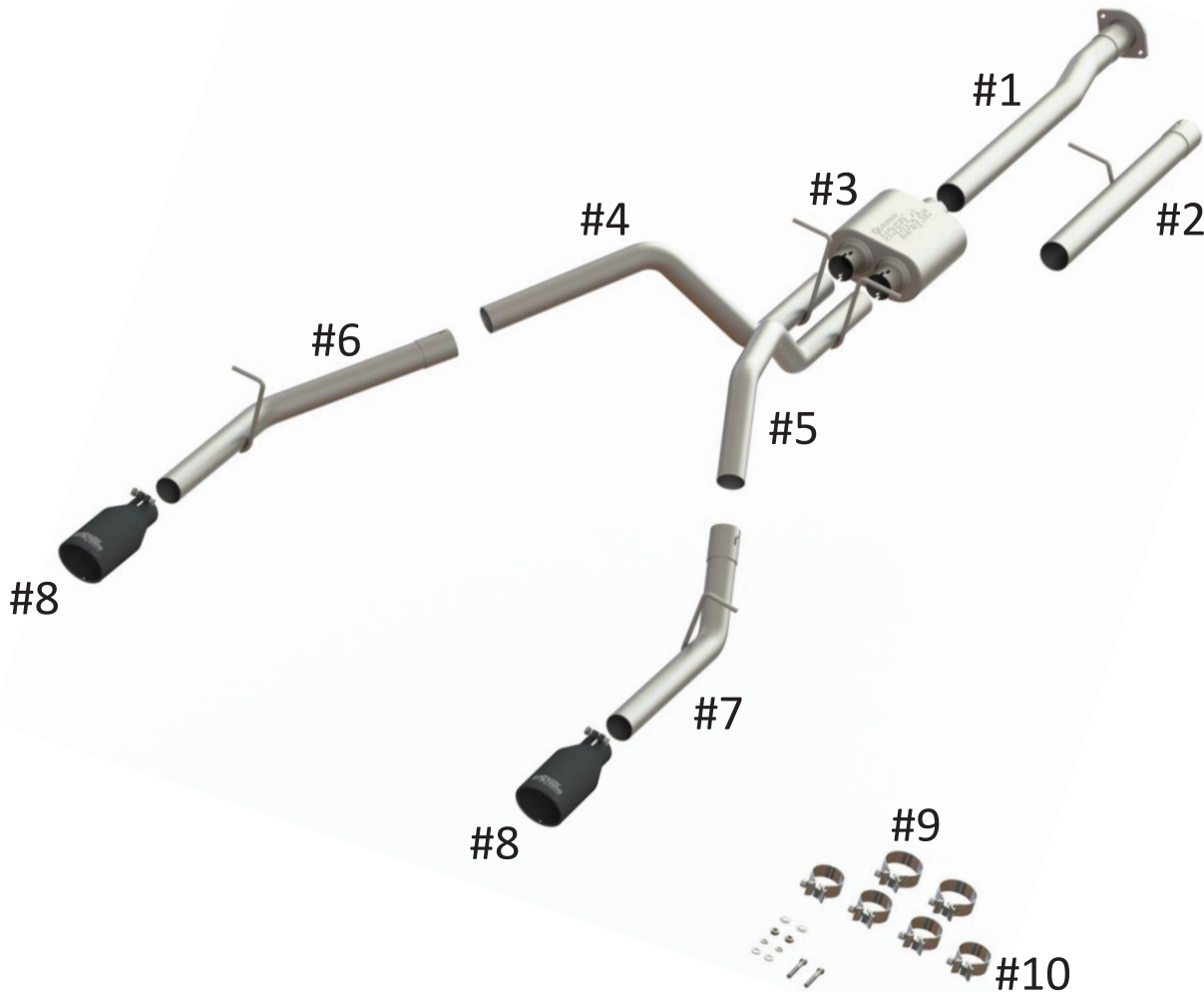
1. Before installing inlet pipe #1, modification may be necessary.
 - Crew Cab with a 5'7" bed: trim 9" from the end of the inlet pipe (end without the flange).
 - Crew Cab with 6'4" bed: no modification of inlet pipe is necessary.
 - Quad Cab with a 6'4" bed: trim 13" from the end of the inlet pipe (end without the flange).
2. Slide a 3" muffler clamp onto the inlet of the muffler and connect the muffler inlet to the rear of the extension pipe #2. Loosely tighten clamp for possible later adjustment.
3. Slide two 2 1/2" clamps onto the muffler outlets. Route both the left #4 and the right front tailpipes #5 over the axle and into the muffler outlets. Slide hangers from both front tailpipes into the OEM rubber hangers. Loosely tighten clamp for possible later adjustment.
4. Slide two 2 1/2" clamps onto both the left rear tailpipe #6 and the right rear tailpipe #7 and connect to the left front tailpipe #4 and the right front tailpipe #5. Slide wire hangers from rear tailpipes into OEM rubber hangers. Loosely tighten muffler clamps for possible later adjustment.
5. Install the MaxFlow Xtreme tips onto the left rear and right rear tailpipes and loosely tighten for possible adjustment. If needed, adjust the tips and pipes to desired clearances and proper position.
6. Make all necessary adjustments for the pipes and muffler for proper clearances. From front to rear, fully tighten each clamp until connections are secure.
7. Install supplied hanger keepers onto inlet pipe and tailpipe hangers. Install hanger keepers onto all OEM hangers. Hanger keepers are important to keep the system from shifting and allowing a hanger to come free from holder.





PARTS LIST:

Qty	Part Description	Qty	Part Description
1	Inlet Pipe (#1)	1	Hardware Kit***
1	Extension Pipe (#2)	2	3" Exhaust Clamps (#9)
1	Muffler (#3)	4	2 1/2" Exhaust Clamps (#10)
1	Left Front Tailpipe (#4)	2	3/8" x 2 1/2" Bolts
1	Right Front Tailpipe (#5)	2	3/8" Nuts
1	Left Rear Tailpipe (#6)	2	3/8" Washers
2	Right Rear Tailpipe (#7)	2	3/8" Lock Washers
2	Black Powder Coat Tips (#8)	5	7/16" Hanger Keepers



Keystone Automotive Operations (KAO) warrants this product to be free of defects in material and workmanship at the time of purchase by the original retail consumer. KAO disclaims any other warranties, express or implied, including the warranty of fitness for a particular purpose or an intended use. If the product is found to be defective, KAO may replace or repair the product at our option, when the product is returned prepaid, with proof of purchase. Alteration to, improper installation, or misuse of this product voids the warranty. KAO's liability is limited to repair or replacement of products found to be defective, and specifically excludes liability for any incidental or consequential loss or damage.