



JK INSTALLATION INSTRUCTIONS - ROCKCRAWLER SIDE GUARDS

PART # JK-4121

2007-CURRENT JEEP WRANGLER JK - 4-DOOR UNLIMITED



Hardware Kit for Rockcrawler Side Guards - JK Unlimited 4-Door

DO NOT INSTALL THIS PRODUCT ON ANY VEHICLE OTHER THAN JEEP JK UNLIMITED MODELS.

Body Armor designed this product to give you years of dependability and performance. If you encounter any problems during installation of this product, or at any later date, please contact your authorized Body Armor dealer, or call 951-808-0750 for our customer service department, or check our website for tech bulletins regarding your year and model vehicle.
Our hours are Monday thru Thursday 8AM-4:00PM and Friday 8AM-12PM, Pacific Time.

Important: Before beginning installation, assure that all parts and hardware listed are contained in this package.

Please contact us immediately should you find any shortages in parts and / or hardware.

READ AND UNDERSTAND ALL INSTRUCTIONS BEFORE ATTEMPTING TO INSTALL THE STEPS.



Hex Head Bolt 8M X 30MM
QTY: 14



8M Flat Washer
QTY: 14



8M Lock Nut
QTY: 8



"U" Nuts (8m thread)
QTY: 4
(Maybe replaced with "T" bolts)



Hex Head Bolt 6M X 30MM
QTY: 4



6M Flat Washer
QTY: 4



6M Lock Nut
QTY: 4



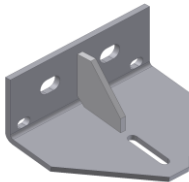
Hex Head Bolt 10M X 30MM
QTY: 12



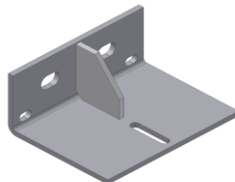
10M Flat Washer
QTY: 12



10M Split Washer
QTY: 12



JK Mounting Bracket #1 (Rear only)
PN= 4121.01
QTY: 2



JK Mounting Bracket #2 (Front & Center)
PN= 4121.02
QTY: 4

Check out our line-up of front and rear bumpers for your Jeep!



JK-19331-Triple Hoop Front Bumper



JK-19431-Quad Hoop Front Bumper



JK-2393 & 5292-Swing-A-Way Bumper

Assorted Accessories from Body Armor

New JK Front Skid Plate



New Trail Doors for JK 4 Door and 2 Door



Roof Rack and Cargo basket for JK Unlimited and JK 2 door

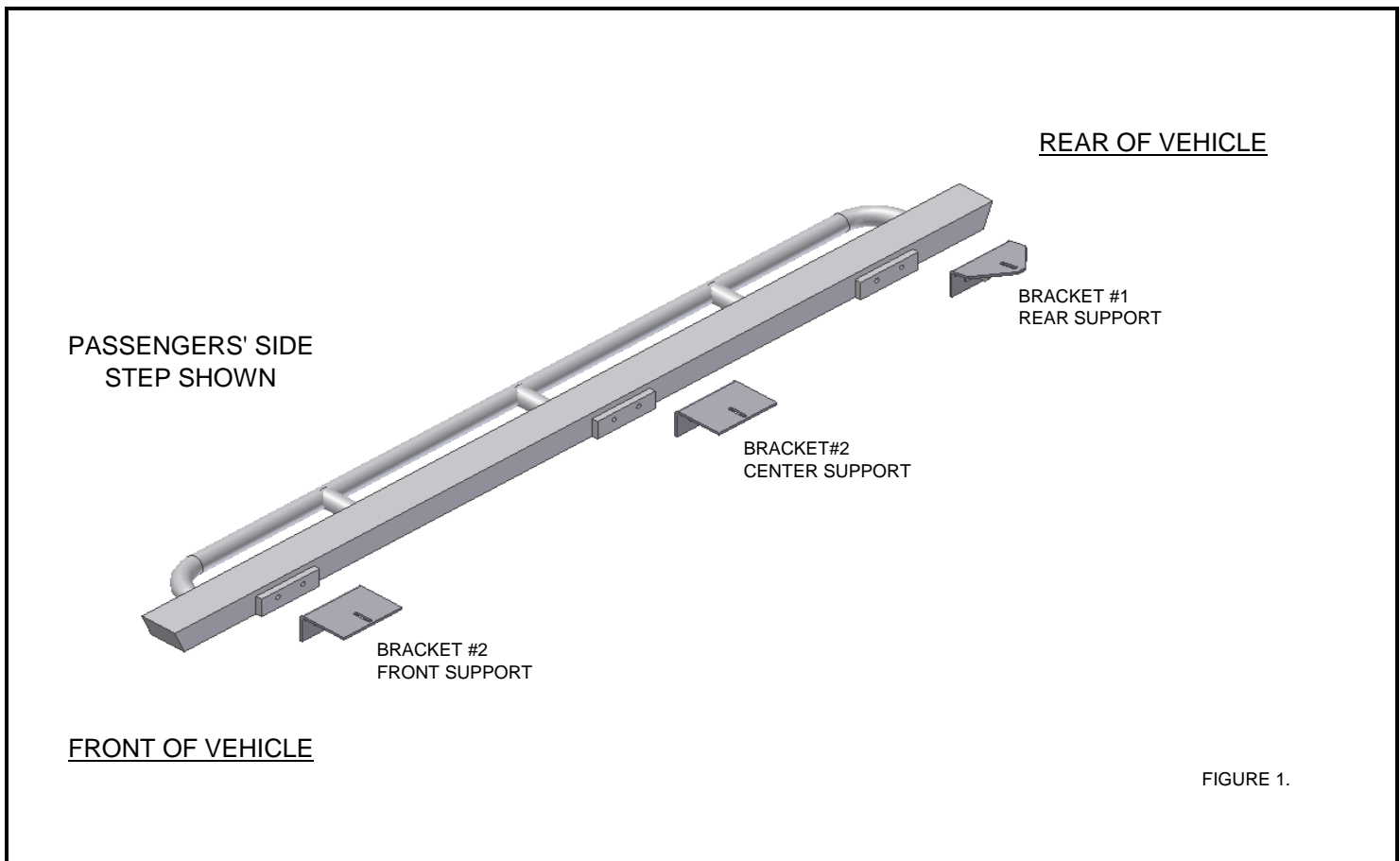


Side Guard Installation - Jeep JK Unlimited

- Step 1 Check parts / hardware list and confirm all parts and necessary hardware are included before installation. It's a good idea to spray all OE attaching hardware with penetrating oil before beginning removal of OE bolts. This will ease removal as well as help assure that none of the bolts' / nuts' threads are damaged during removal.
- Step 2
- If your vehicle is equipped with the factory steps or side bars, they will need to be removed prior to installation of the Body Armor RockCrawler Side Guards.
 - Start with the Passenger side. Refer to Figure 1(below) for proper placement of each bracket.
 - Identify the 3 factory holes located in the undercarriage of the vehicle. If necessary you may need to install a "U" Nut in to the square opening making sure you center it in the hole as shown in Photo group1. (next page) Use an 8MM bolt, "U" nut, washer and split washer to attach each bracket to the undercarriage. Use factory threaded nut in the undercarriage if equipped. Install bracket #2 in the front and center positions, Install bracket #1 in the rear position.
 - Locate the 3 sets of holes (6 total) in the factory pinch weld. Start with the front set. Attach a bracket (#2) to the pinch weld using either an 8MM bolt nut and washer or a 6MM bolt nut and washer. The size of the hole in the pinchweld will determine which bolt to use. 8MM for the larger hole and 6MM for the smaller hole, this may vary depending on the location.
 - Loosely fit all brackets with hardware. Once all brackets are attached tighten all hardware prior to installing side bars.
- Step 3 Identify the passenger and driveside bar by lining them up so that they match the brackets that are mounted on the vehicle.
- Step 4 With the aid of a helper, hold up the side guard to the pinchweld and attach them to the mounting brackets using the
- 10mm bolts, nuts and washers as shown in Photo #3. (next page).

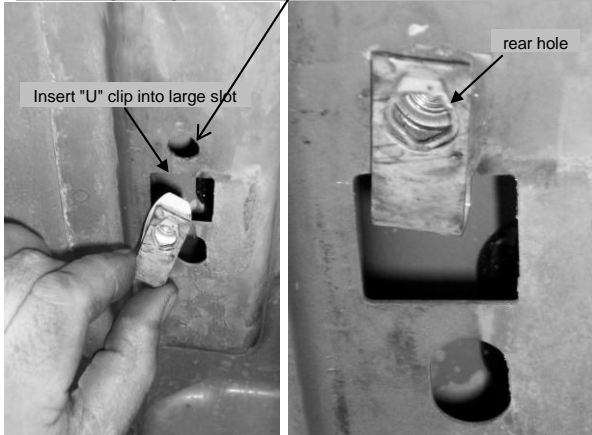
Repeat steps "a" through "e" above on passenger side, though in reverse (as in diagram below).
See Photos on the next page for reference.

***We recommend you check the torque of all bolts after about two weeks, and after every off-road / trail run to assure tightness.

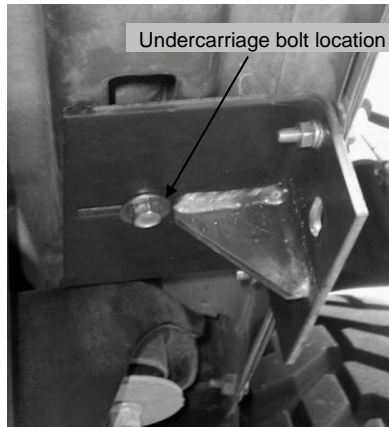


The "U" nuts may be replaced with a "T" bolt. If this is the case insert the "T" bolt into the large slot so that the bolt will drop down through the hole in the rocker panel. This is a running change to our hardware.

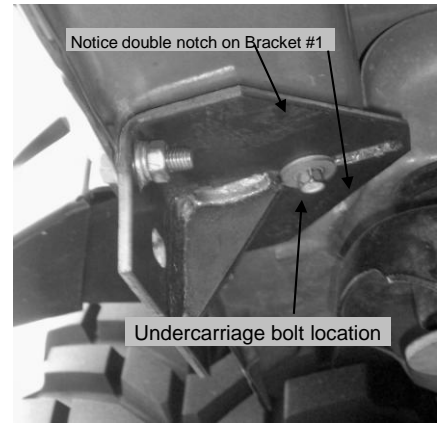
If you have "T" bolts the bracket will fit onto the bolt that drops down through the rocker panel. Use flat washer the lock washer followed by the nut.



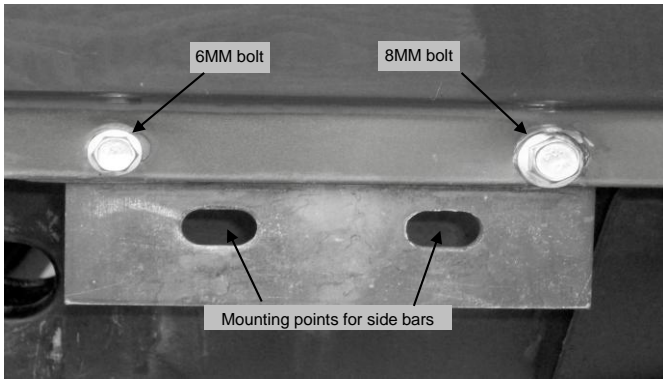
Insertion of "U" clip
"U" clip Installed
Photo Group 1



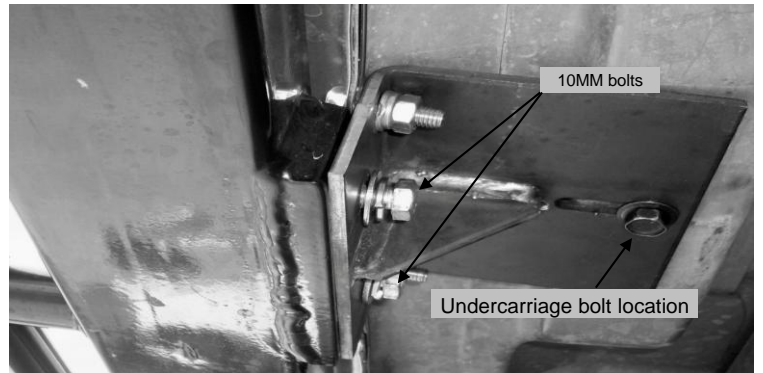
Front Bracket Installed (bracket #2)



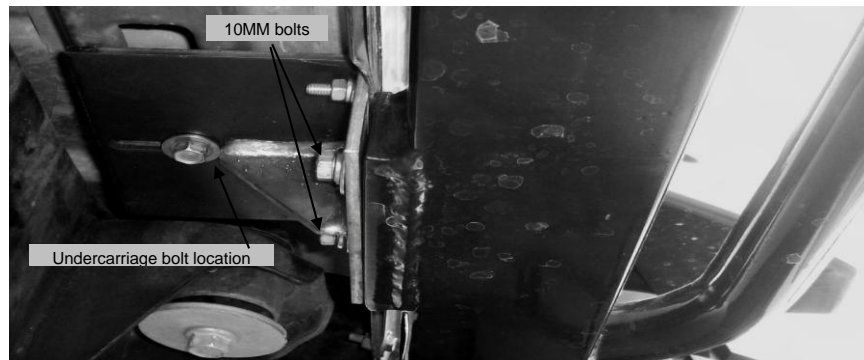
Rear Bracket installed (bracket #1)



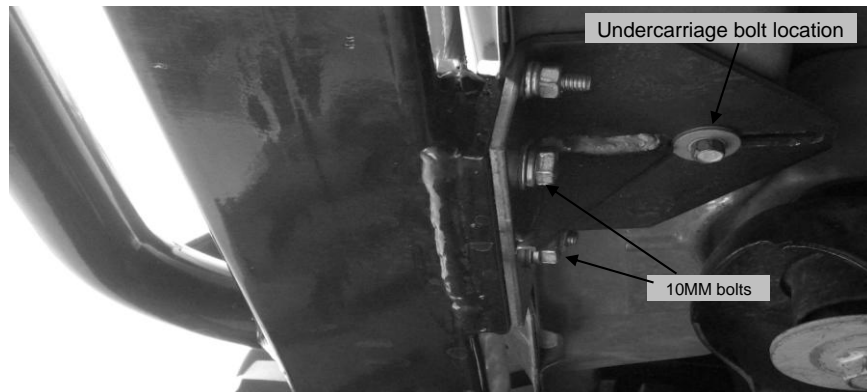
Outside view of bracket with 6MM & 8MM bolts



Center Bracket with bar installed



Front bracket with bar installed



Rear bracket with bar installed