



INSTALLATION GUIDE

PART NUMBER: 252003
CONTROL ARM KIT
FORD BRONCO 4WD | 2021+

These control arms were designed to be used with Belltech lift kit number 152600. It must not be used alone without a lift. They may be used on a vehicle that has been lifted 4" to 7.5" using another brand. Belltech has not tested cross-compatibility with any other brands and cannot guarantee results when used with another brands products.

300 W. PONTIAC WAY. CLOVIS, CA 93612
PHONE: 800-445-3767 | EMAIL: INFO@BELLTECH.COM

THANK YOU

Thank you for choosing our high quality Belltech product. We have spent a great deal of time developing our line of products so that you will receive maximum performance with minimal difficulty during installation. Soon your vehicle will be on the road looking and feeling much improved.

Please take a moment to read all instructions and warnings prior to the installation of your new Belltech product and before operating your vehicle. If you have any questions or concerns regarding any step in the installation process, please do not hesitate to call or email our customer support specialists who are trained to help you through any portion of this process.

Before You Begin:

It is of the utmost importance that you confirm all of the components listed on the parts list is in the kit. You can find this list located on the last page(s) of your instructions. Do not begin installation if any part is missing. Instead, please call our Belltech customer service specialists.

Belltech Customer Support:

Phone: 1-800-445-3767

Email: info@belltech.com

Safety Information:

Warning: Do not work under a vehicle supported only by a jack. Place support stands securely under the vehicle in the manufacturer's specified locations unless otherwise instructed.

Proper use of safety equipment and eye/face/hand protection is absolutely necessary when performing any of the following instructions.

We strive for an exceptional experience for all our valued customers. If for any reason you need assistance with your Belltech products, please do not return the product to the store you purchased from, but rather call our dedicated customer service experts, from 7am to 5pm PST.

We recommend that a qualified mechanic, at a properly equipped facility, perform this installation.

It is very helpful to have an assistant available during installation.

Before Driving Your Vehicle:

It is important to double check all brake hoses, cables, and other components to be sure there is no interference. You must also check for wheel/tire to chassis/body interference. If any issues are found, review your installation instructions to be sure no steps were missed and any problems are corrected.

Make sure your vehicle is aligned immediately following installation.

Check all hardware and re-torque at intervals for the first 10, 100, and 1000 miles.

Some of Belltech's products are designed to improve your vehicle's off-road performance. Leveling/lifting your vehicle may result in an altered center of gravity. It is crucial to use extreme care when operating your vehicle to prevent rollover and/or loss of control.

Any changes in your vehicle's suspension may result in transformed handleability. Please test-drive your vehicle in a remote location so you can become accustomed to the revised driving characteristics.

Perform headlight check and adjustment.

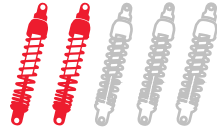
Failure to drive any modified vehicle in a safe manner may result in harm or death.

Never operate your modified vehicle under the influence of drugs, alcohol, or lack of adequate sleep.

Always wear your seatbelt.



DIFFICULTY:



INSTALLATION TIME:

1-2 Hours +
Alignment

RECOMMENDED TOOLS:

- Properly rated floor jack
- Support stands
- Wheel chocks
- Metric socket wrench set
- Metric wrench set
- Safety glasses

SPECIALTY TOOLS:

- Torque wrench up to 150 ft lbs.
- Ball joint separator

JACKING, SUPPORTING, AND PREPARING THE VEHICLE

1. Park your vehicle on a smooth, level, concrete or seasoned asphalt surface.
2. Block the rear wheels of the vehicle using wheel chocks. Make sure the vehicle's transmission is in "PARK" (automatic) or 1st gear (manual).
3. Activate the parking brake.
4. Break loose, but do not spin the wheel lug nuts to ease in removal when the wheels are in the air.
5. Lift the front of the vehicle off the ground using a properly rated floor jack. Lift the vehicle so the front tires are approximately 6-8 inches off the ground.
6. Place support stands rated for the vehicles weight. The stands should be positioned in the factory specified locations. (Refer to the owners manual). Prior to lowering the vehicle onto stands, make sure the support stands will contact the chassis. It is very important that the vehicle is properly supported to prevent any harm to ones self or to the vehicle.
7. Lower the vehicle slowly onto the stands.
8. Remove the front wheels.



Technician reminder:

Never work under a vehicle supported only by a jack. It is necessary to place support stands securely under the vehicle in the manufacturer's specified locations unless otherwise instructed.

OEM UPPER CONTROL ARM REMOVAL

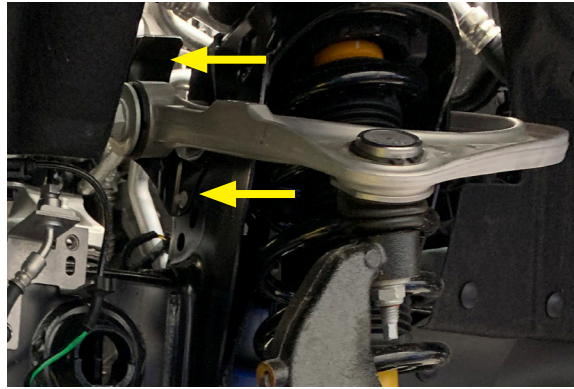
9. If equipped, remove the height sensor arm bracket bolt and move bracket aside to continue removing the control arm.



Technician reminder:

The height sensors must be disconnected prior to removing the control arms to prevent dynamic suspension system errors or failure.

10. Remove the upper control arm shield 10mm bolt and detach shield on the passenger side.



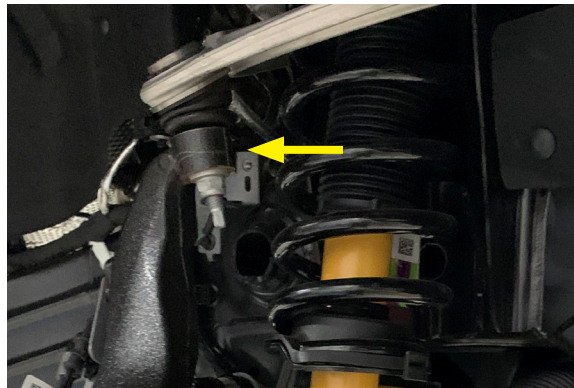
11. Locate the steering linkage on the driver side. Use a paint pen mark a line on the both the U-joint and at the firewall. Remove the bolt from the coupler and slide the linkage away. Do not allow the upper and lower shafts to rotate.



Technician reminder:

Do not rotate steering wheel while it is disconnected to prevent damaging the clock spring.

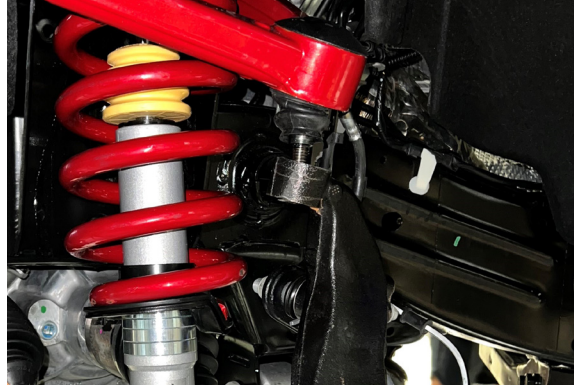
12. Support the lower control arm and spindle assembly with a jack to prevent overextending or cause other damage.
13. Remove the upper ball joint nut with a 21mm wrench. Use the hex stud on the ball joint to prevent the stud from turning while removing the nut. Use a ball joint separator tool to detach the ball joint from the spindle. Alternatively you can strike the ball joint boss on the spindle to remove the ball joint.



14. Using 21mm and 24mm wrenches, remove the upper arm bolt and nut to detach the control arm from the vehicle.

BELLTECH UPPER CONTROL ARM INSTALLATION

15. Mount the upper control arm to the chassis and fasten it with the upper control arm bolt and nut. Do not torque yet.
16. Use the jack under the control arm to raise the suspension to simulate (load) the vehicle weight on the ground.
17. Attach the upper ball joint to the spindle. Torque the nut to 46 ft lbs.



18. Tighten the upper control arm bolt and nut, torque to 122 ft lbs.
19. Using the marks previously made, line up and connect the upper and lower steering linkage to the original position. Torque the coupling bolt to 22 ft lbs.
20. Mount the upper control arm shield and torque the shield bolt 80 in. lb
21. If the height sensor bracket was removed, place it back on the control arm torque the bolt to 53 in. lb



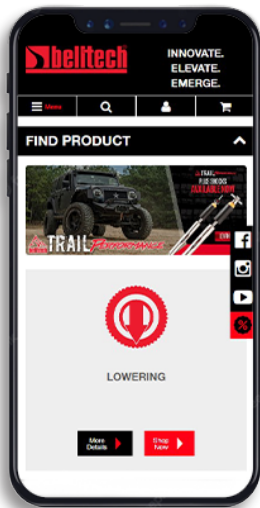
22. If the fender liner was removed, return the liner to its original position and secure it with the push pins and pin type retainers.

FINALIZING THE INSTALLATION

23. Mount the wheels and tighten the lug nuts.
24. Lift the vehicle and remove the support stands.
25. Carefully lower the vehicle onto the flat ground.
26. Torque the lug nuts to 100 ft lbs.
27. Check that all components and fasteners have been properly installed and torqued.
28. Read and perform all tasks in the “Before Driving Your Vehicle” section of page 1 of your instructions.

THANK YOU FOR CHOOSING BELLTECH.

You are now a part of the Belltech family and we are eager to catch a glimpse of your newly modified vehicle. Give us a shout out and let us know how much you love our product. Don't forget, we offer other Belltech related merchandise for you and your vehicle on our website www.belltech.com



belltechsuspension



Belltech Suspension



@belltechsuspension

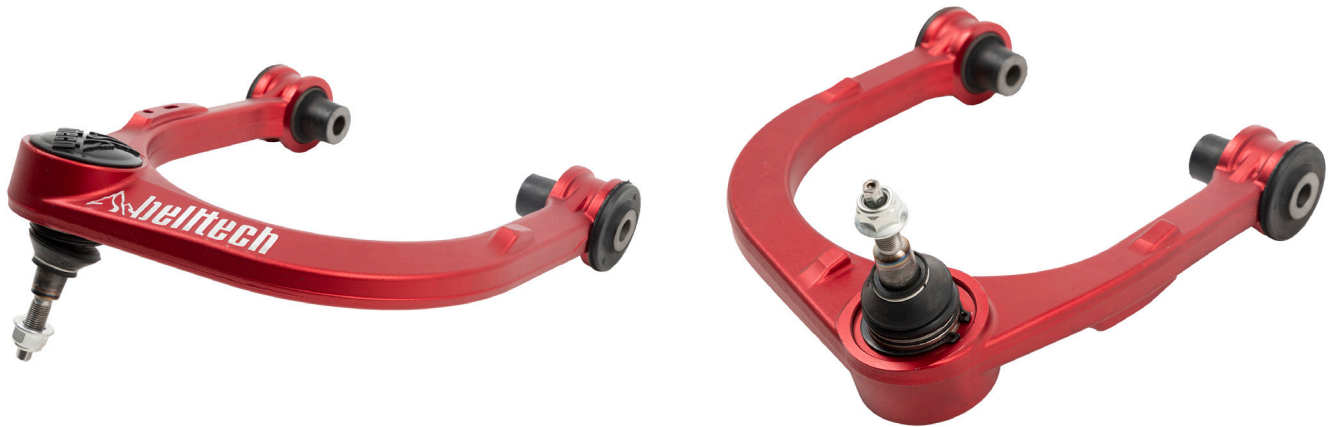
If you have any questions, concerns, or warranty related issues regarding your Belltech product, please call or email our experienced customer service specialists.

Belltech Customer Support:

Phone: 1-800-445-3767

Email: info@belltech.com

KIT CONTENTS



252003		
Part number	Description	Qty
152600-A100L	Passenger Upper Control Arm	1
152600-A100R	Driver Upper Control Arm	1