

Bully Dog Technologies, LLC is a team built on integrity that is dedicated to leading the vehicle performance industry with an uncompromising code of ethics demonstrated in the soundness of its employees, excellent customer service and superior products.

UNLEASH THE POWER

WITH BULLY DOG PERFORMANCE PRODUCTS

Downloaders



Intake Systems



OutLook Monitor



Custom Outlook Pod

See More at: bullydog.com

Doc.# BD83009 v1.0.1

For a full listing of Diagnostic Trouble Codes go to: www.bullydog.com/DTC.php



BULLY DOG

For Free Technical Support

Call: 866-bullydog (866-285-5936)



BULLY DOG

#1 IN PERFORMANCE

INSTALLATION MANUAL



Vehicle Application	Part#
Rapid Flow 4" Aluminized Dual Exhaust	183240





TROUBLESHOOTING:

If you have questions during the installation of this product, please visit www.bullydog.com/Product_Updates.php.

The latest version of these instructions can be found at the same location. Please review the Troubleshooting section on page 9 before calling technical support to cover most common issues. Technical support is available by calling 866-bullydog (866-285-5936).

TABLE OF CONTENTS

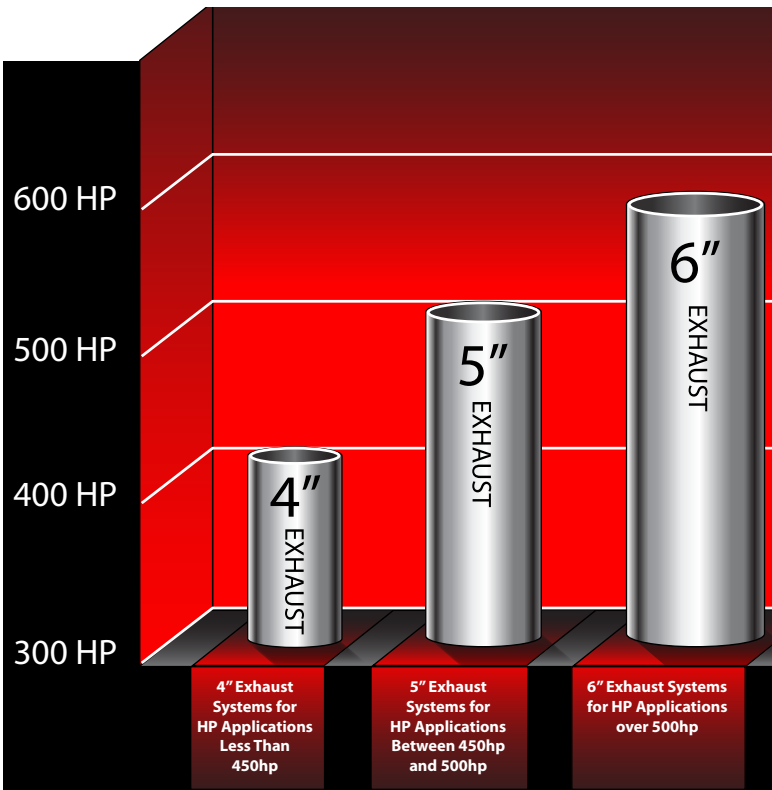
INTRODUCTION	PG 2
BILL OF MATERIALS	PG 2
EXHAUST REMOVAL	PG 3
EXHAUST INSTALLATION	PGS 4-8
Quick Overview	Pg 4
Installation Steps	Pgs 5-8
TROUBLESHOOTING/FAQ	PG 9
WARRANTY & DISCLAIMER	PG 10

INTRODUCTION

The Bully Dog Rapid Flow Exhaust Systems have been specially designed to allow the lowest mandrel bends in the industry. The lower mandrel bends allow increased air flow which reduces exhaust temperatures and burns more fuel in the combustion chamber and adds additional horsepower and fuel economy. This instruction set covers the 4" Rapid Flow Dual Aluminized Exhaust, an exhaust designed to give that unique look and functionality.

Note: This instruction set and the Rapid Flow Exhaust systems included are made exclusively for the 6.6L GM Duramax vehicles '04.5-'06.

BULLY DOG'S RULE OF THUMB FOR EXHAUST SIZES

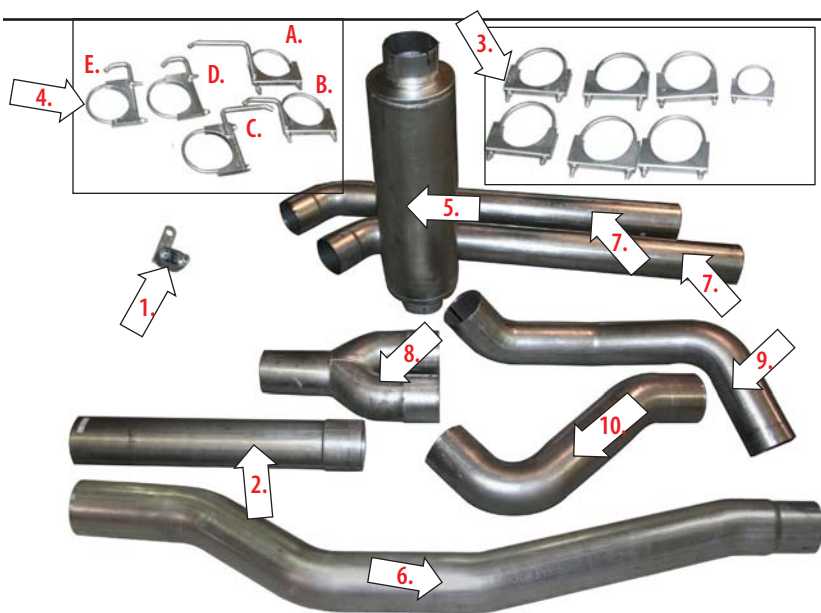


BILL OF MATERIALS

1. Hanger Bracket
2. Straight Pipe
3. Clamps (7 Pieces)
 - A. Cross Member #1
 - B. Cross Member #2
 - C. Behind Muffler
 - D. Driver Side Tail Pipe
 - E. Passenger Side Tail Pipe
4. Hangers (5 Pieces)
5. Muffler
6. Cross Member Pipe Section
7. Tail Pipe Tip (2 pieces)
8. Y-Pipe
9. Driver Side Tail Pipe
10. Passenger Side Tail Pipe

TOOLS NEEDED

- 9/16" Wrench
- Sawzall (Recommended)
- Silicone Spray Lubricant
- Socket Wrench
- Drill
- 1/2" Drill Bit
- 3/4 End Wrench

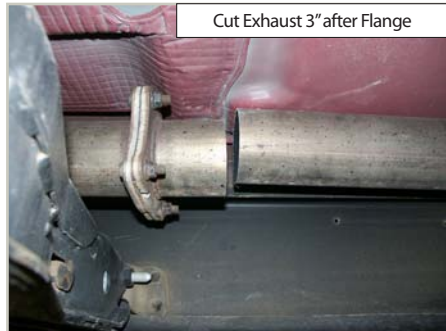


REMOVAL OF STOCK EXHAUST SYSTEM

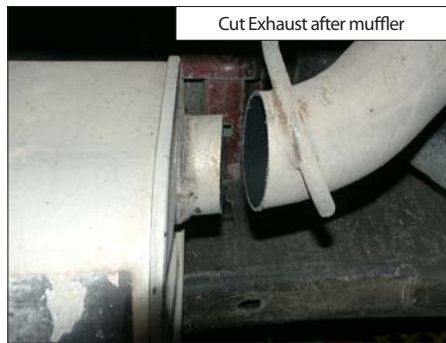
In these steps you will remove the stock exhaust system.

IMPORTANT: It is illegal in all 50 states to remove the catalytic converter.

1. Cut the exhaust system starting after the catalytic converter. Measure and cut 3 inches after the flange the clamp towards the rear of the vehicle.

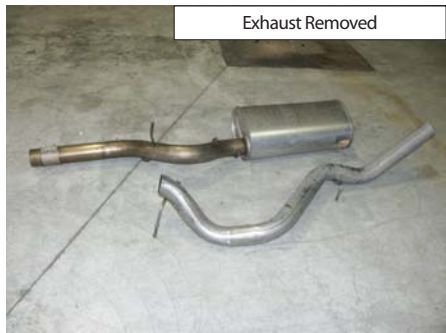


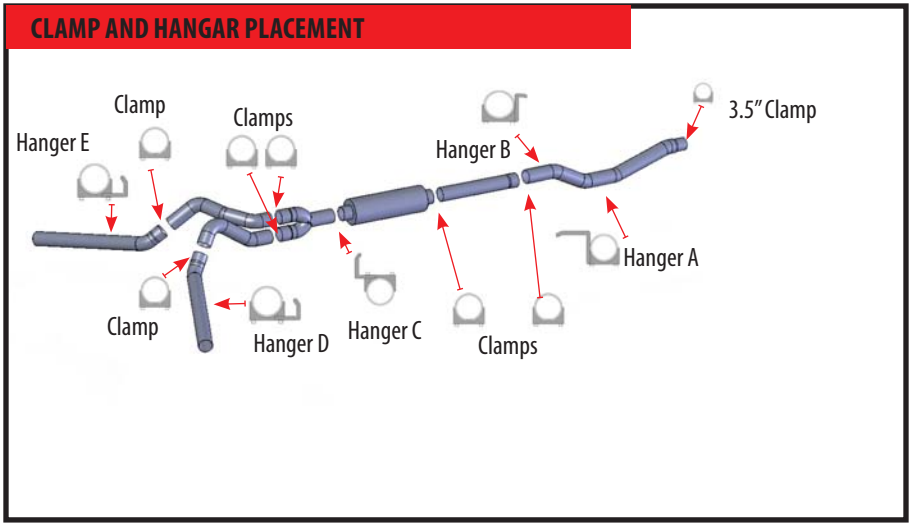
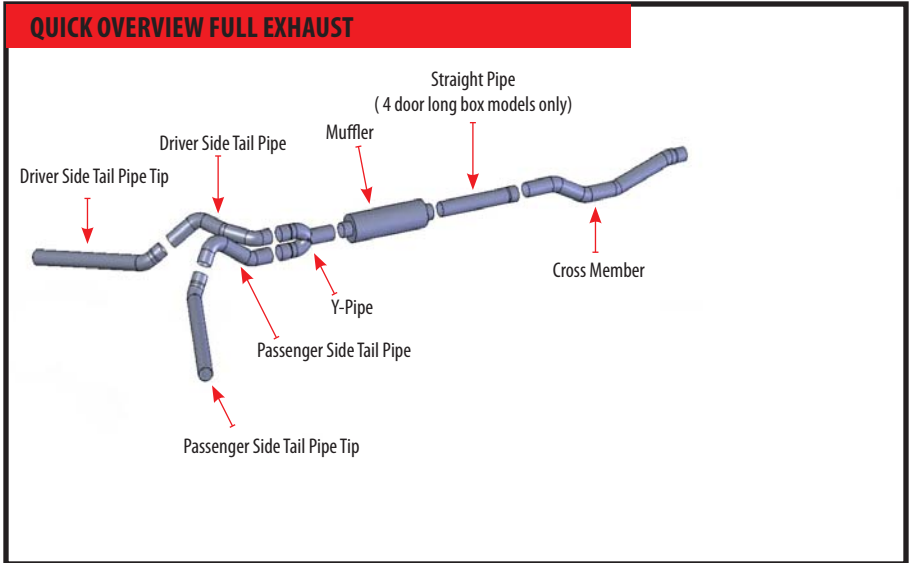
2. Use a sawzall to cut the exhaust immediately behind the muffler.



3. To make removing the Hangers an easier process, it is recommended that you use a silicone spray lubricant to spray each of the rubber hangers holding the stock exhaust.

4. Remove each piece of the stock exhaust system, including the stock exhaust hangers.

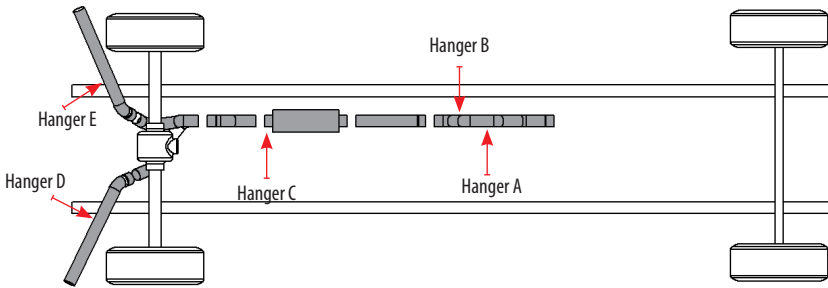




INSTALLATION OF THE BULLY DOG RAPID FLOW EXHAUST SYSTEM

In these steps you will install the Rapid Flow Exhaust System. Bully Dog's Exhaust Systems are one-cut systems, meaning that you should only have to cut one pipe or less if installed correctly.

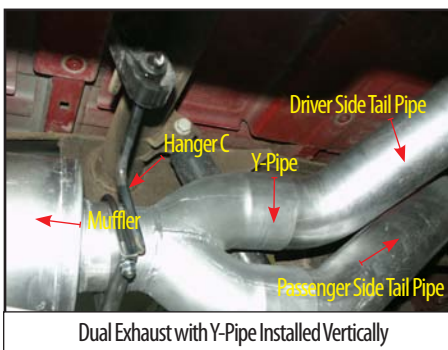
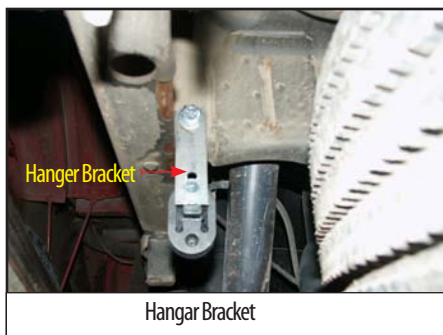
IMPORTANT: Do not over-tighten clamps. Too much torque will result in deformation of the exhaust. For best results when doing the installation, tighten the clamps enough to hold the exhaust pieces in place, but don't tighten down until the entire exhaust system is installed.



1. It is suggested that before installing the system on the truck, the Rapid Flow Exhaust System be laid out on a large flat surface to acknowledge the location of each piece.
2. Place all of the supplied Hangers except Hanger E into their appropriate locations as shown in the above diagram. Hangers A & B will hold the cross member. Hanger C will serve as a clamp between the Muffler and the Y Pipe. Hanger D will hold the Passenger Side Tail Pipe. Hanger E will hold the Driver Side Tail Pipe. Set Hanger E aside for later use.
3. Slide two of the supplied Clamps onto each end of the Cross Member Pipe.
4. Install the Cross Member Pipe to the catalytic converter, ensuring that the pipe follows the bend of the truck's cross member. Tighten the Clamp that is nearest to the catalytic converter.

NOTE: At this point, it is recommended to start from the rear of the truck and work forward. A Straight Pipe has been included and this will be the piece that can be cut if required.

5. Install the Passenger Side Tail Pipe over the rear axle. Confirm that the bend of the Passenger Side Tail Pipe is directly over the rear axle.
6. Install the Passenger Side Tail Pipe Tip into the Passenger Side Tail Pipe. Use one of the supplied clamps to secure the junction between the two pipes.
7. Now you will need to create a hanger location on the vehicle for Hanger E. The hanger location will be parallel to Hanger D and you will need a 1/2" bit to drill the hole.
8. You will need a 9/16" wrench to secure the nut and bolt that will hold the Hanger E Clamp.
9. Hang Hanger E as shown.
10. Install the Driver Side Tail Pipe over the rear axle. Again confirm that the bend of the Driver Side Tail Pipe is directly over the rear axle.
11. Install the Driver Side Tail Pipe Tip into the Driver Side Tail Pipe. Use one of the supplied clamps to secure the junction between the two pipes.
12. Install the Y Pipe. You will need two clamps to secure both the Passenger Side Tail Pipe and the Driver Side Tail Pipe. The Y Pipe will need to be installed vertically. The Passenger Side Tail Pipe is fitted into the lower extension and the Driver Side Tail Pipe will be in the upper extension as shown.





Complete System Installed

13. At this point, if you need the extra Straight Pipe cut the Straight Pipe to the desired length. Keep in mind that you need 3 inches of overlap when you cut the pipe. If you don't need the straight pipe, simply install the muffler directly into the Cross Member section. If the straight pipe is not needed, you will have an extra straight pipe and an extra clamp left over when you are finished.

14. Once the entire exhaust system is installed, inspect the system to ensure that no part of the exhaust is in direct contact with the chassis or body; adjustments may be necessary.
15. Return to each of the Clamps and tighten with a 9/16" wrench. Again, do not over tighten Clamps. Having any part of the exhaust system in direct contact with any part of the body or chassis will cause the exhaust to rattle.
16. If necessary, trim the Tail Pipe Tips with a sawzall to achieve the desired fit and look.
17. Polished Bully Dog Tail Pipe Tips are available in many sizes and styles that can be either bolted or welded to the Tail Pipe Tips to give a finished look.



Part Number:180466

Part Number:180450

Part Number:180295

Part Number:180291



TROUBLESHOOTING/FAQ

CONDITION	POSSIBLE SOURCES	ACTION
Which is better a 4" exhaust or a 5" exhaust system?	General	It really depends on the application. A bigger exhaust system will allow more airflow and lower exhaust temperatures. However, too large of an exhaust system without other increases in horsepower will lower back pressure and give the vehicle a sluggish start. Bully Dog recommends a 4" Rapid Flow Exhaust system for horsepower applications under 450 hp and 5" Rapid Flow Exhaust Systems are recommended for applications running between 450 to 550 horsepower.
Can I make my exhaust louder?	Exhaust Sounds	If you are running your vehicle off road, Bully Dog can sell you another straight pipe to put in place of the muffler. The part # is 185017 for 4" systems.
Exhaust Rattle	Exhaust Sounds	Either one of the clamps is not tight or the exhaust is coming in contact with the chasis or body. Adjust the exhaust to ensure that no contact is made.

WARRANTY & DISCLAIMER

REMEMBER, THIS IS A PERFORMANCE PRODUCT, USE AT YOUR OWN RISK.

This product is not intended to be used to break the law.

Do not use this product until you have carefully read the following agreement. This agreement sets forth the terms and conditions for the use of this product. The installation of this product indicates that the buyer has read and understands this agreement and accepts the terms and conditions. Never exceed recommended vehicle or tire top speed ratings.

DISCLAIMER OF LIABILITY

Bully Dog Technologies, LLC. Its distributors, jobbers, and dealers (hereafter Seller) shall be in no way responsible for the product's proper use and service. THE BUYER HERBY WAIVES ALL LIABILITY CLAIMS.

The Buyer acknowledges that he is not relying on the Sellers skill or judgment to select or furnish goods suitable for any particular purpose and that there are no liabilities which extend beyond the description on the face hereof, and the Buyers hereby waivers all remedies or liabilities expressed or implied, arising by law or otherwise, (including without any obligation of the Seller with respect fitness, merchantability and consequential damages) or whether or not occasioned by the Seller's negligence.

The Seller disclaims any warranty and expressly disclaims any liability for personal injury or damages. The Buyer acknowledges and agrees that the disclaimer of any liability for personal injury is a material term for this agreement and the Buyer agrees to indemnify the Seller and to hold the Seller harmless from any claim related to the item of the equipment purchased. Under no circumstances will the Seller be liable for any damages or expenses by reason of use or sale of any such equipment.

The Seller assumes no liability regarding the improper installation or misapplication of its products. It is the installer's responsibility to check for proper installation and if in doubt contact the manufacturer.

The Buyer is solely responsible for all warranty issues from the manufacturer.

LIMITATION OF WARRANTY

BULLY DOG TECHNOLOGIES, LLC. (Hereafter "Seller") gives Limited Warranty as to description, quality, merchantability, and fitness for any particular purpose, productiveness, or any other matter of Seller's product sold herewith. The Seller shall be in no way responsible for the products proper use and service and the Buyer hereby waives all rights other than those expressly written herein. This warranty shall not be extended, altered or varied except be a written instrument signed by Seller and Buyer.

The Warranty is Limited to one (1) year from the date of sale and limited solely to the parts contained within the products kit. All products that are in question of Warranty must be returned prepaid to the Seller and must be accompanied by a dated proof of purchase receipt. All Warranty claims are subject to approval by BULLY DOG TECHNOLOGIES, LLC.

Under no circumstances will the Seller be liable for any labor charged or travel time incurred in diagnosis for defects, removal, or reinstallation of this product or any other contingent expenses.

Under no circumstances will the Seller be liable for any damage or expenses incurred by reason of the use or sale of any such equipment.

IN THE EVENT THAT THE BUYER DOES NOT AGREE WITH THIS AGREEMENT: THE BUYER MAY PROMPTLY RETURN THIS PRODUCT, IN A NEW AND UNUSED CONDITION, WITH A DATED PROOF OF PURCHASE TO THE PLACE OF PURCHASE WITHIN TEN (10) DAYS FROM DATE OF PURCHASE FOR A FULL REFUND.

THE INSTALLATION OF THIS PRODUCT INDICATES THAT THE BUYER HAS READ AND UNDERSTANDS THIS AGREEMENT AND ACCEPTS ITS TERMS AND CONDITIONS.