

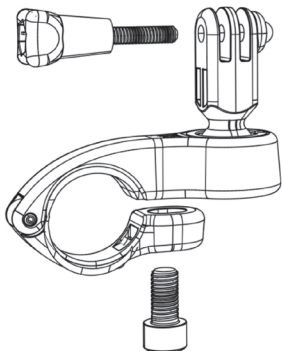
VISION  
SYSTEM

Camera Mount  
for Motorcycles, Bicycles, ATVs,  
and Snowmobiles

Monture  
D'appareil Photo  
pour Motocyclettes, Bicyclettes,  
VTT et Motoneiges

Montaje De  
Cámara  
para Motocicletas, Bicicletas,  
Vehículos Todoterreno y Motonieves

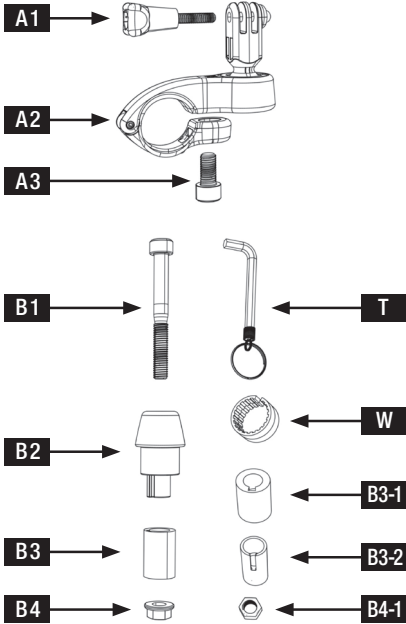
**INSTALLATION GUIDE  
GUIDE D'INSTALLATION  
GUÍA DE INSTALACIÓN**



**K**  
**source®**

# INSTALLATION GUIDE

## PARTS and FEATURES

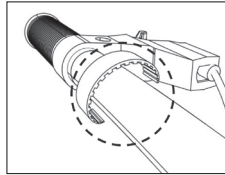


- A1** Thumb screw
- A2** Clamping mount
- A3** Mounting bolt
- B1** Handlebar mount bolt
- B2** Handlebar end
- B3** Medium rubber insert  
(for 7/8" handlebar)
- B3-1** Large rubber insert  
(for 1" handlebar)
- B3-2** Small rubber insert  
(for 5/8" handlebar)
- B4** Flanged hex nut  
(match with medium & large rubber insert)
- B4-1** Hex nut  
(match with small rubber insert)
- W** Gasket  
(for 7/8" outer diameter handlebar)
- T** Hex wrench

## INSTALLATION STEPS (on handlebar)

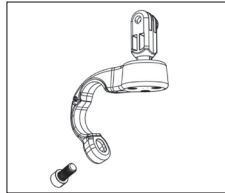
### Step 1

For 7/8" handlebars, use the supplied gasket (W) before mounting. Do not use for 1"



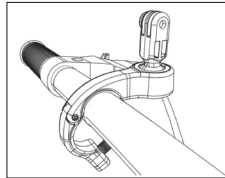
### Step 2

Loosen clamping mount (A2) by hex wrench (T)



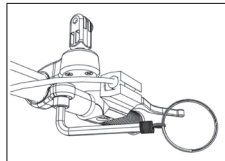
### Step 3

Attach clamping mount to handlebar.



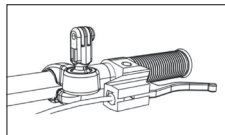
### Step 4

Fasten bolt (A3) with hex wrench



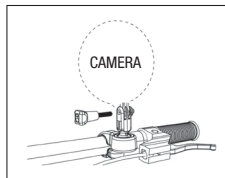
### Step 5

Fasten Power Sports Camera to clamping mount.

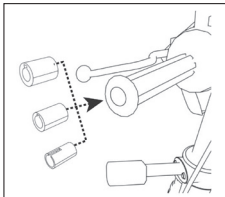


### Step 6

Tighten camera with thumb screw (A1).

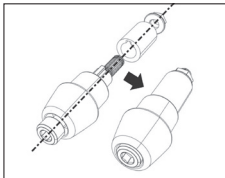


# INSTALLATION STEPS (in handlebar end)



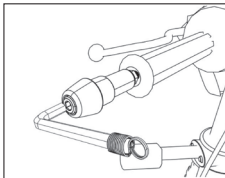
## Step 1

Before installation, use a blade to carefully slice off the rubber endcap of your handlebar grip to expose the opening. Measure and choose the proper rubber insert (B3/B3-1/B3-2) for your handlebar.



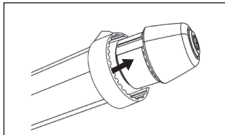
## Step 2

Assemble the bolt (B1) with rubber insert and hex nut (B4 or B4-1).



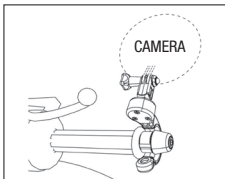
## Step 3

Jam assembly into your handlebar opening and tighten with hex wrench (T).



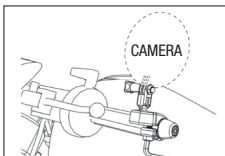
## Step 4

Place gasket (W) onto recessed area of the bar-end assembly.



## Step 5

Attach clamping mount of the Power Sports Camera over the gasket.

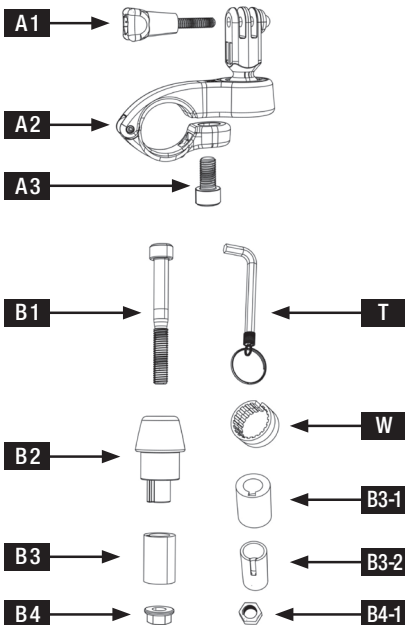


## Step 6

Tighten camera with thumb screw. (A3)

# GUIDE D'INSTALLATION

## PIÈCES et CARACTÉRISTIQUES



**A1** Vis de serrage

**A2** Dispositif de fixation

**A3** Boulon de montage

**B1** Boulon de montage du guidon

**B2** Extrémité du guidon

**B3** Pièce en caoutchouc moyenne

(pour guidon de 22 mm ou 7/8 po)

**B3-1** Grande pièce en caoutchouc

(pour guidon de 25 mm ou 1 po)

**B3-2** Petite pièce en caoutchouc

(pour guidon de 16 mm ou 5/8 po)

**B4** Écrou hexagonal à bride

(concordez avec un insert en caoutchouc moyen et large)

**B4-1** Écrou hexagonal

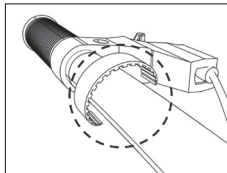
(concordez avec la petite pièce en caoutchouc)

**W** Joint d'étanchéité

(pour guidon à dia. ext. de 22 mm ou 7/8 po)

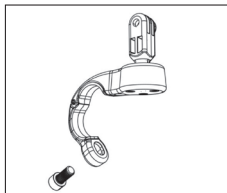
**T** Clé hexagonale

## ÉTAPES D'INSTALLATION (sur le guidon)



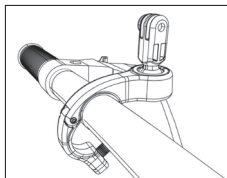
### Étape 1

Pour des guidons de 22 mm (7/8 po), utilisez le joint d'étanchéité fourni (W) avant le montage. Ne l'utilisez pas pour les guidons de 25 mm (1 po)



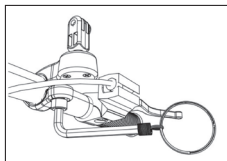
### Étape 2

Desserrez le dispositif de fixation (A2) au moyen de la clé hexagonale



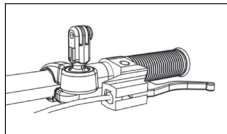
### Étape 3

Fixez le dispositif de fixation sur le guidon.



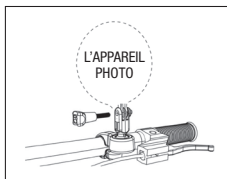
### Étape 4

Serrez le boulon (A3) au moyen de la clé hexagonale



### Étape 5

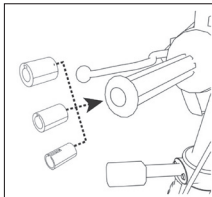
Fixez l'appareil photo de véhicules sports motorisés sur le dispositif de fixation.



### Étape 6

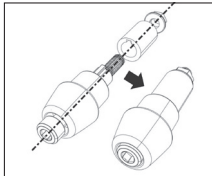
Serrez l'appareil photo au moyen de la vis du boîtier (A1).

## ÉTAPES D'INSTALLATION (dans l'extrémité du guidon)



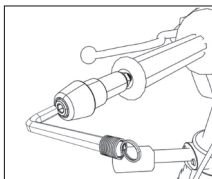
### Étape 1

Avant l'installation, utilisez une lame pour couper et enlever soigneusement le capuchon d'extrémité en caoutchouc de la poignée du guidon en vue de mettre à découvert l'ouverture. Mesurez et choisissez la pièce en caoutchouc qui convient (B3/B3-1/B3-2) à votre guidon.



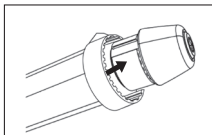
### Étape 2

Assemblez le boulon (B1) au moyen de la pièce en caoutchouc et de l'écrou hexagonal (B4 ou B4-1).



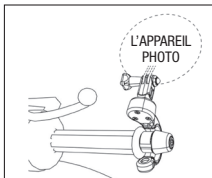
### Étape 3

Poussez l'assemblage dans l'ouverture de votre guidon et serrez au moyen de la clé hexagonale (T).



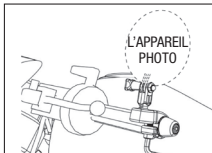
### Étape 4

Placez le joint d'étanchéité (W) sur la zone en retrait de l'assemblage de l'extrémité.



### Étape 5

Fixez le dispositif de fixation de l'appareil photo de véhicules sports motorisés par-dessus le joint d'étanchéité.

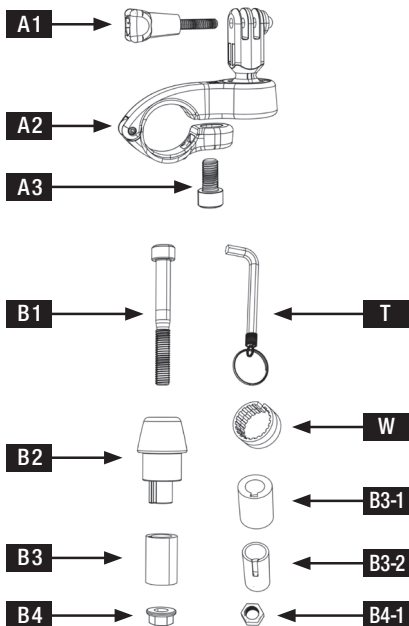


### Étape 6

Serrez l'appareil photo au moyen de la vis de serrage (A3).

# GUÍA DE INSTALACIÓN

## PIEZAS Y CARACTERÍSTICAS

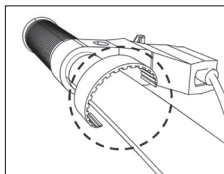


- A1 Tornillo de pulgar
- A2 Montaje de la abrazadera
- A3 Tornillo de montaje
- B1 Tornillo de montaje del manubrio
- B2 Extremo del manubrio
- B3 Inserto de goma mediano  
(para manubrio de 7/8")
- B3-1 Inserto de goma grande  
(para manubrio de 1")
- B3-2 Inserto de goma pequeño  
(para manubrio de 5/8")
- B4 Tuerca con brida hexagonal  
(coincidir con inserto de goma mediano y grande)
- B4-1 Tuerca hexagonal  
(combinar con inserto de goma pequeño)
- W Junta  
(para manubrio de diámetro exterior de 7/8")
- T Llave hexagonal

## PASOS DE INSTALACIÓN (en el manubrio)

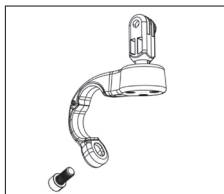
### Paso 1

Para los manubrios de 7/8", use la junta que se incluye (W) antes del montaje. No la use para 1".



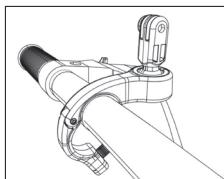
### Paso 2

Afije el montaje de la abrazadera (A2) con la llave hexagonal (T).



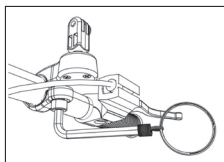
### Paso 3

Coloque el montaje de la abrazadera en el manubrio.



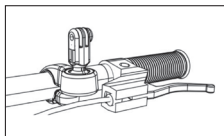
### Paso 4

Sujete el tornillo (A3) con la llave hexagonal.



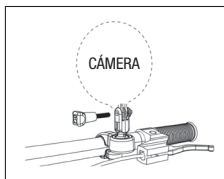
### Paso 5

Sujete la Cámara para deportes motorizados al montaje de la abrazadera.



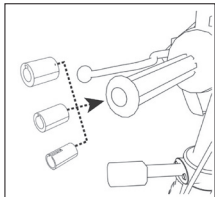
### Paso 6

Sujete la cámara con el tornillo de pulgar (A1).



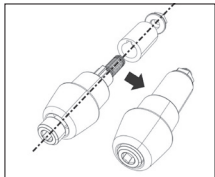
# PASOS DE INSTALACIÓN

## (en el extremo del manubrio)



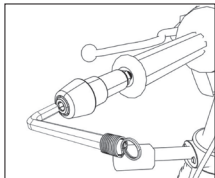
### Paso 1

Previo a la instalación, use una cuchilla para deslizar con cuidado hacia afuera la tapa de goma del extremo del manubrio para dejar al descubierto la abertura. Mida y elija el inserto de goma apropiado (B3/B3-1/ B3-2) para el manubrio.



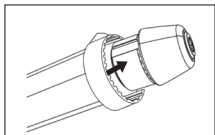
### Paso 2

Monte el tornillo (B1) con el inserto de goma y la tuerca hexagonal (B4 o B4-1).



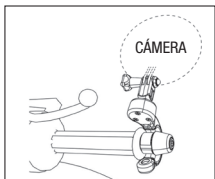
### Paso 3

Fije el ensamblaje en la abertura del manubrio y ajuste con la llave hexagonal (T).



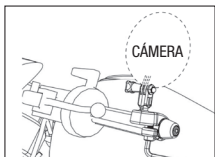
### Paso 4

Coloque la junta (W) en el área empotrada del ensamblaje del extremo del manubrio.



### Paso 5

Coloque el montaje de la abrazadera de la Cámara para deportes motorizados sobre la junta.



### Paso 6

Sujete la cámara con el tornillo de pulgar (A3).



Rancho Dominguez, CA 90221  
[www.ksource.org](http://www.ksource.org)