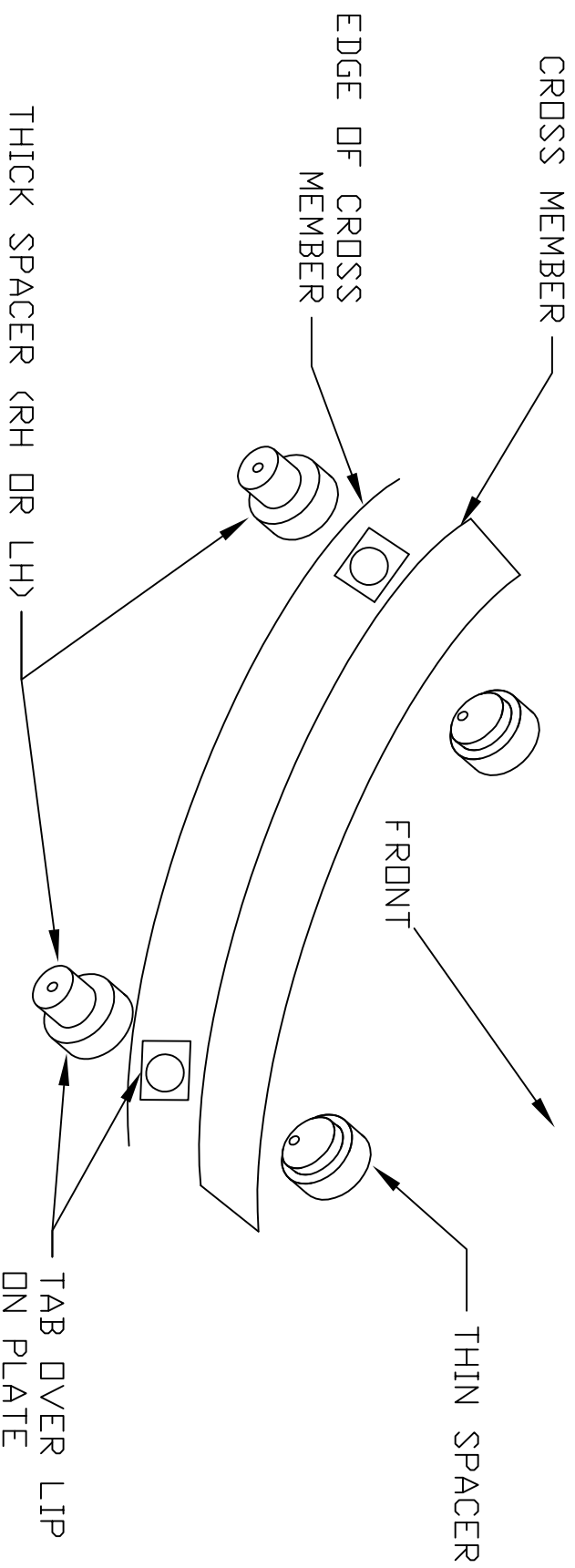


INSTRUCTION SHEET FOR RP18021

1963 - 64 FORD 427 HIGH PERFORMANCE KIT (REPLACES CRANK SYSTEM ON STANDARD VEHICLES) (MUST BE INSTALLED IN PAIRS)



INSTRUCTIONS

1. REMOVE CRANK ASSEMBLE FROM CONTROL ARM AND FRAME
2. INSERT THIN SPACER IN FRONT OF FRAME (WILL BE LIGHT PRESS FIT)
3. INSERT THICK SPACER IN REAR OF FRAME - LEFT ON LEFT AND RIGHT ON RIGHT. MAKE SURE TANG LOCATES ON WELDED FRAME REINFORCEMENT FLAT CLOSEST TO EDGE OF CROSS MEMBER
4. INSTALL BOLT THROUGH SPACERS AND THEN THROUGH CONTROL ARM
INSTALL WASHER AND NUT - DO NOT TIGHTEN
ON NON-427 CARS THE SLEEVE IS REQUIRED OVER THE BOLT TO FIT THE BUSHING
5. LOWER CAR ON GROUND TO NEUTRALIZE BUSHING AND TORQUE NUT