

Hellwig PRODUCTS.com

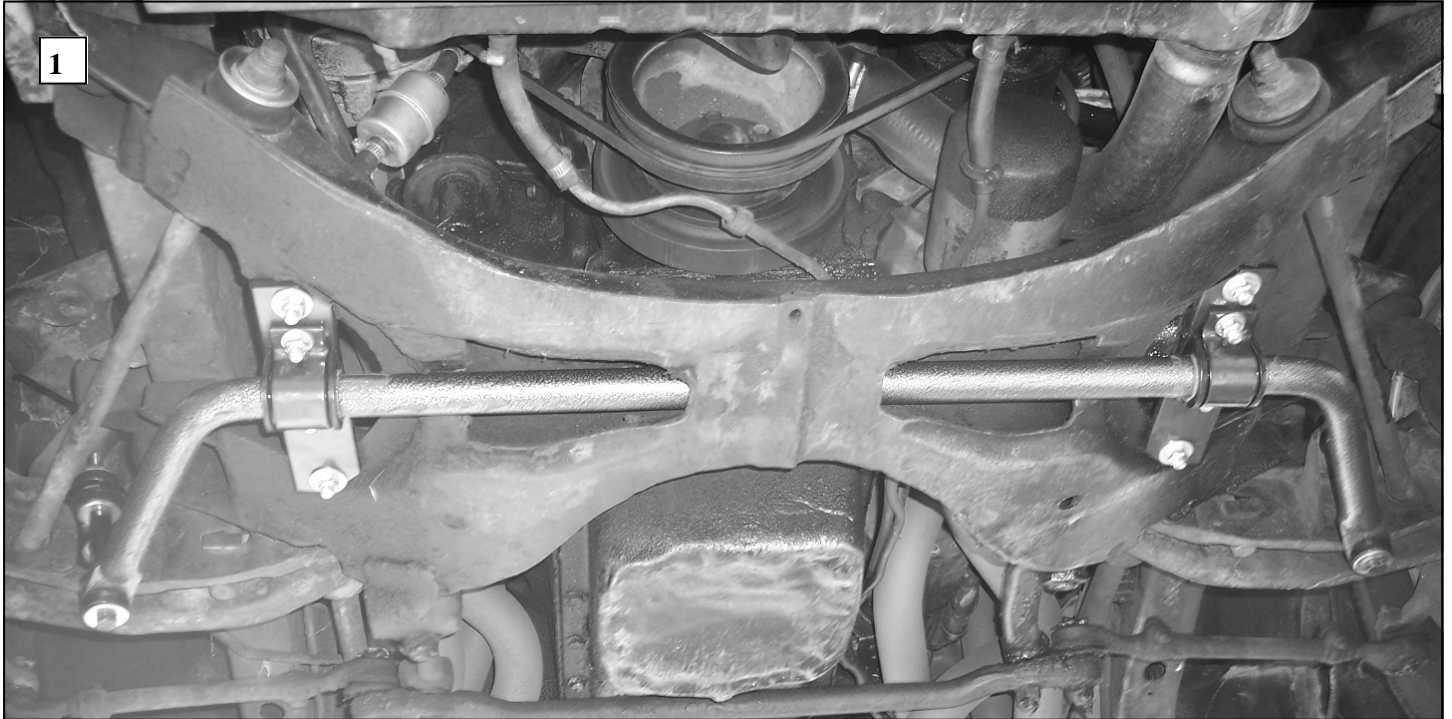
559-734-7451 800-367-5480 FAX 559-734-7460

INSTALLATION INSTRUCTIONS FRONT STABILIZER BAR

1970-72 B-Body Mopar; 1970-74 E-Body Mopar

Thank you for purchasing a quality Hellwig Product.

PLEASE READ THIS INSTRUCTION SHEET COMPLETELY BEFORE STARTING YOUR INSTALLATION



TORQUE TABLE

BOLT SIZE: 3/8" = 20-30 ft. lbs. - 7/16" = 35-45 ft. lbs. - 1/2" = 50-70 ft. lbs. - 9/16" = 70-90 ft. lbs.

SAFETY: BEFORE STARTING YOUR INSTALLATION, BE SURE TO SET PARKING BRAKE AND CHOCK TIRES.

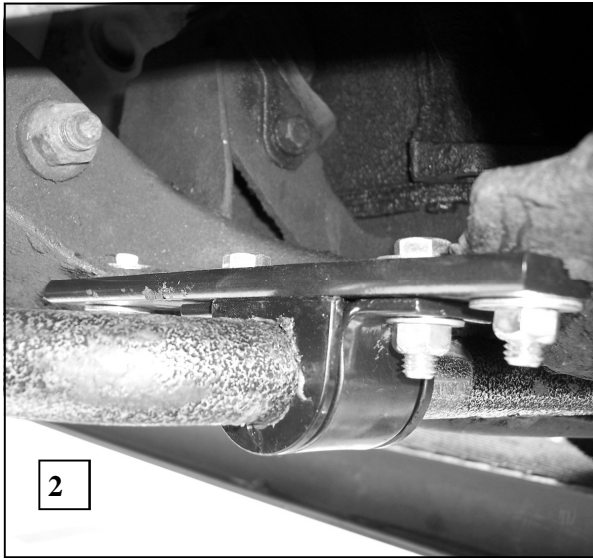
NOTE: TO EASE INSTALLATION AND TO PROPERLY ADJUST THE SWAY BAR, THE WEIGHT OF THE VEHICLE MUST BE ON THE SUSPENSION AS IF DRIVING DOWN THE ROAD. DO NOT RAISE THE VEHICLE BY THE FRAME.

NOTE: THIS UNIT IS DESIGNED AS A REPLACEMENT FOR THE FACTORY INSTALLED FRONT ANTI-SWAY BAR OR AS AN ADDITION IF NOT EQUIPPED.

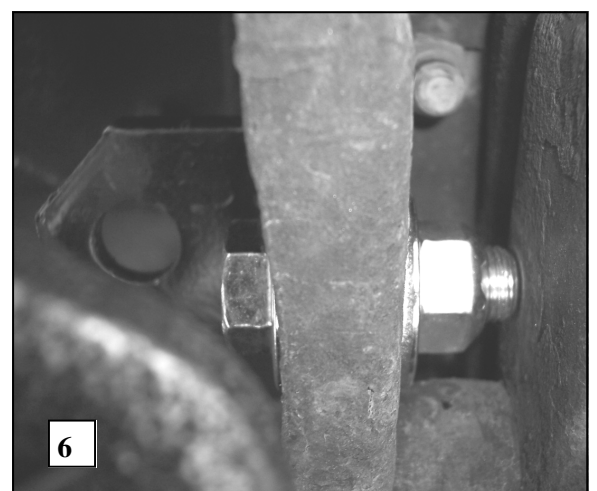
NOTE: THIS KIT INCLUDES LOCK NUTS WHICH REQUIRE TIGHTENING WITH A WRENCH AFTER BEING STARTED BY HAND.

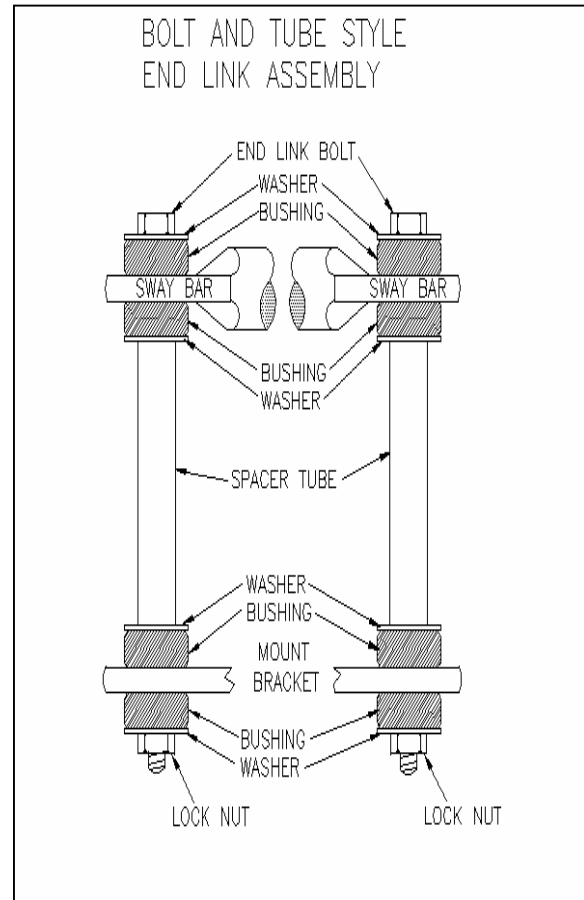
Hellwig PRODUCTS.com

559-734-7451 800-367-5480 FAX 559-734-7460



1. If equipped, remove the factory installed anti sway bar and the mounting hardware.
2. Insert bar through hole in K-member as shown in photo 1.
3. Attach mounting plates to K-member as shown in photos 1 & 2 using 3/8-16 X 1-1/4" bolts, large washers and locknuts. Torque to 25 ft-lb.
4. Lubricate polyurethane D-bushings and install on sway bar in the location where they will attach to the mounting plates. Place u-plates over D-bushings and attach to mounting plates with 3/8-16 X 1-1/4" bolts, small washers and locknuts. Leave loose for adjustment later.
5. If not equipped with factory sway bar mounts, assemble end links and angle brackets as shown in photo 3. If equipped with factory sway bar mounts, skip to line 8.
6. Align end links for best alignment and mark location of bracket as shown in photo 4. **Drill a 17/32" (.531) hole in front face of control arm only. Do not drill through rear face of control arm.** See photos 4,5&6.
7. Attach angle bracket to control arm using 1/2" bolt, washers, and locknut as shown in photos 5&6. Align bracket and torque bolt to 50-60 ft-lb. See photos 5&6.





8. Assemble end links as shown in photos 3&7 and diagram. Tighten end link nuts until bushings start to bulge slightly.
9. Align sway bar in D-bushings and tighten bolts attaching u-plates to mounting plate to 25 ft-lb.
10. Be sure that all bolts are tightened to specifications. Re-check your installation, check for clearance on all undercarriage components; wiring, springs, fuel and brake lines.
11. Turn wheels full lock left and then right, check for clearance on tires, wheels and steering components.
12. After one week of driving recheck your installation. Re-check on regular basis thereafter.

ATTENTION INSTALLER: BE SURE THAT THE CUSTOMER RECEIVES THIS INSTRUCTION SHEET, ALL IMPORTANT NOTE CARDS AND THE WARRANTY FORM