



Safety glasses should be worn at all times while installing this product.

YEARS: 2010-CURRENT

MAKE: HONDA

MODEL: INSIGHT

STYLE: 5 DOOR

**WARNING: NEVER EXCEED YOUR VEHICLE MANUFACTURER'S RECOMMENDED TOWING CAPACITY**

**WEIGHT CARRYING:**  
 TRAILER WEIGHT: 2,000 LBS.  
 TONGUE WEIGHT: 200 LBS.

**WARNING:**  
 WE RECOMMEND THE USE OF 18050 STABILIZING STRAPS FOR ALL NON-TRAILER (WHEEL-LESS) LOADS. PLEASE SEE THE CURT CATALOG OR VISIT US ONLINE AT [WWW.CURTMFG.COM](http://WWW.CURTMFG.COM) FOR FURTHER INFORMATION.

**INSTALLATION TIME: 45 MIN.**

THE INSTALL TIME LISTED IS FOR PROFESSIONAL INSTALLERS. IF YOU ARE HESITANT TO UNDERTAKE THIS TASK ON YOUR OWN, CONTACT AN AUTHORIZED CURT INSTALLER FOR ADDITIONAL ASSISTANCE.




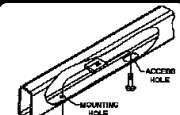
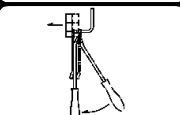
**INSTALLATION REQUIRES:**

 <b>FLAT SCREW DRIVER</b>	 <b>PHILLIPS SCREW DRIVER</b>	 <b>10mm 11/16"</b> <b>SOCKET</b>
 <b>12"</b> <b>SOCKET EXTENSION</b>	 <b>RATCHET</b>	 <b>TORQUE WRENCH</b>
 <b>ROTARY TOOL</b>	 <b>SAFETY GLASSES</b>	

**INSTALLATION TIPS:**

- BEFORE YOU BEGIN INSTALLATION, READ ALL INSTRUCTIONS THOROUGHLY.
- TO EASE INSTALLATION, 2 PEOPLE MAY BE REQUIRED.
- USING PROPER TOOLS WILL GREATLY IMPROVE THE QUALITY OF THE INSTALL AND REDUCE THE TIME REQUIRED.
- NEED HELP OR HAVE SOME QUESTIONS? CALL TECHNICAL SUPPORT AT 800.798.0813

**LEVEL OF DIFFICULTY: MODERATE**

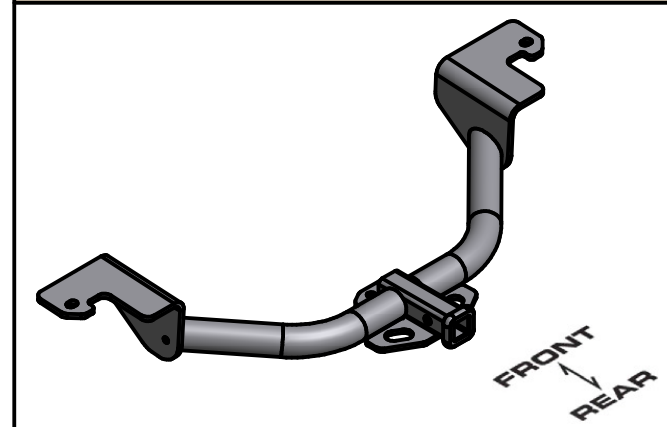
EASY	MODERATE	CHALLENGING
 PART REMOVAL	REMOVE SPLASH SHIELDS	
 TRIM	TRIMMING SPLASH SHIELDS	
 NO DRILL	NO DRILL	
 FISHWIRE HARDWARE	FISHWIRE HARDWARE	
 LOWER EXHAUST TO EASE INSTALLATION	LOWER EXHAUST TO EASE INSTALLATION	

**VEHICLE PHOTO:**



REPRESENTATIVE PHOTO

**HITCH ILLUSTRATION:**



MAKE SURE YOUR HITCH MATCHES

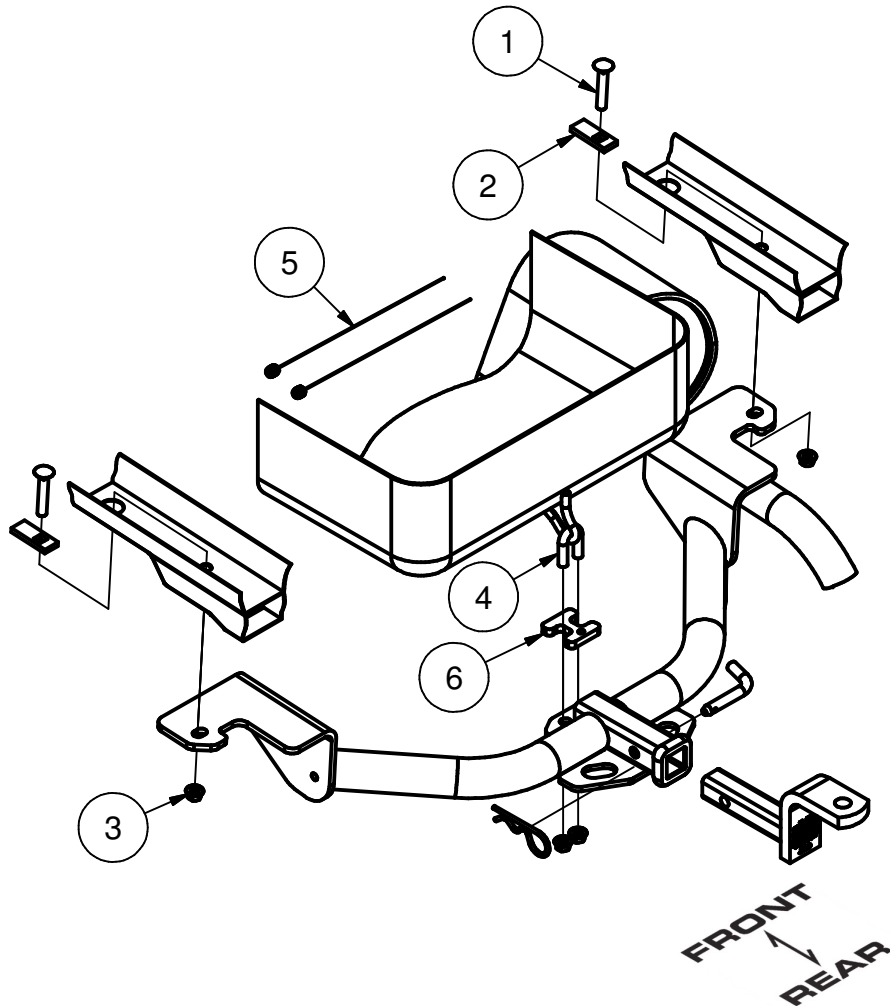
**PERIODICALLY CHECK THIS RECEIVER HITCH TO ENSURE ALL FASTENERS ARE TIGHT AND ALL STRUCTURAL COMPONENTS ARE SOUND**

CURT Manufacturing LLC. warrants this product to be free of defects in material and/or workmanship at the time of retail purchase by the original purchaser. If the product is found to be defective, Curt Manufacturing LLC. may repair or replace the product at their option, when the product is returned, prepaid, with proof of purchase. Alteration to, misuse of, or improper installation of this product voids the warranty. Curt Manufacturing LLC.'s liability is limited to repair or replacement of products found to be defective, and specifically excludes liability for incidental or consequential loss or damage.

For more information log onto [www.curtmfg.com](http://www.curtmfg.com), & for helpful towing tips log onto [www.hitchinfo.com](http://www.hitchinfo.com)

## INSTALLATION WALKTHROUGH:

Parts List			
ITEM	QTY	PART NUMBER	DESCRIPTION
1	2	7/16-14 x 2 1/2	CARRIAGE BOLT
2	2	CM-SP2	.250 x .88 x 2.25" SQUARE HOLE SPACER
3	4	7/16-14	HEX FLANGE NUT
4	1	7_16 - 14 x 1.75" x 1.00" C-C	U-BOLT
5	2	7_16 FISHWIRE	7/16" FISHWIRE
6	1	CM-11051-SP	.375" SPACER



1) Lower the exhaust by removing the (2) rubber isolators from the hangers.

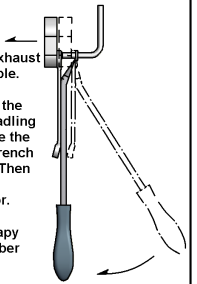


### RUBBER ISOLATOR REMOVAL DIAGRAM

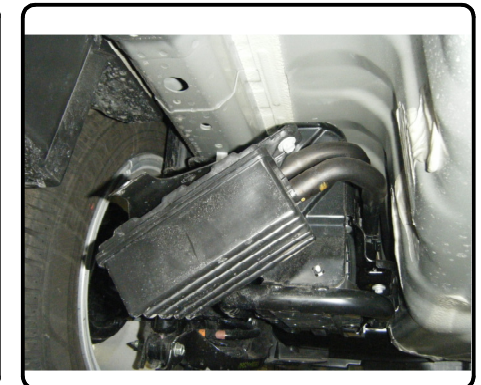
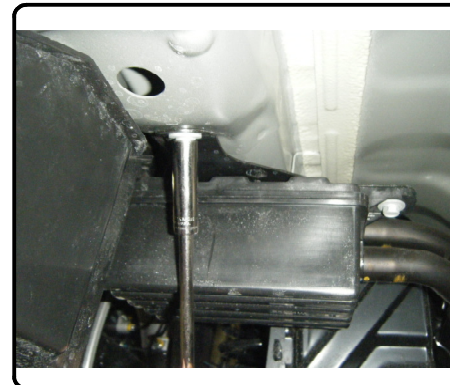
This technique can be used if and Exhaust Hanger Removal Pliers is not available.

Using a 5/8" open end wrench, slide the wrench up to the rubber isolator, cradling the hanger rod as shown. Next place the flat edge of a pry bar between the wrench and the hanger stop or hanger rod. Then simply rotate the pry bar toward the wrench to remove the rubber isolator.

Note: Using a spray lubricant or soapy water on the hanger rod and the rubber isolator helps removal.

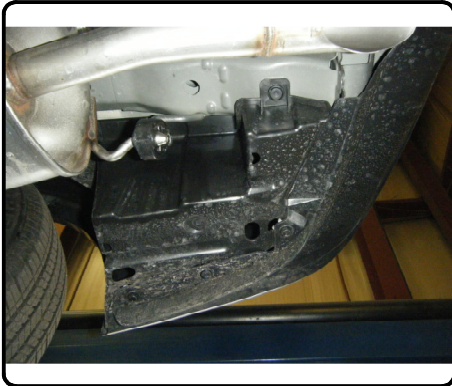


2) Remove the (2) bolts retaining the evaporative emissions conister and allow it to hang.

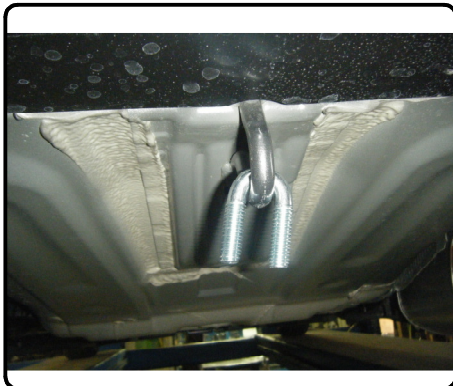


## INSTALLATION WALKTHROUGH:

3) Remove the splash shields located in the rear wheel wells by removing the (3) screw and (3) push fasteners securing them.



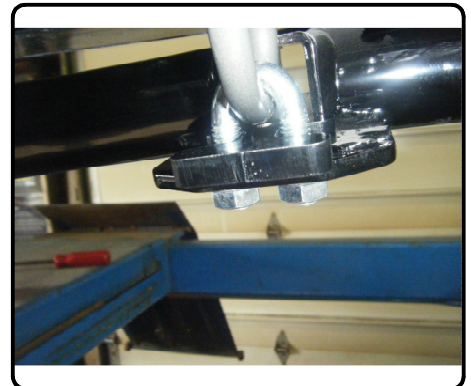
4) Fishwire a 7/16-14 x 2-1/2" carriage bolt and CM-SP2 spacer through the access holes in the frame rails and into the rearmost holes in the frame rails as shown. Also, hang the U-bolt through the tow loop at this time.



5) Raise the hitch into position and secure it to the tow loop using the U-bolt and (2) 7/16" hex flange nuts through the chain plate as shown. Take care not to push the fishwired carriage bolts back into the frame rails.



NOTE: On some models the supplies spacer may be required to level the hitch.



## INSTALLATION WALKTHROUGH:

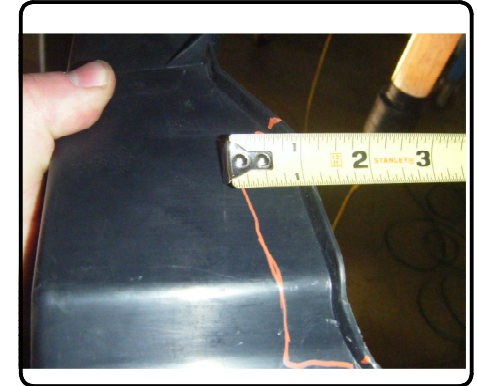
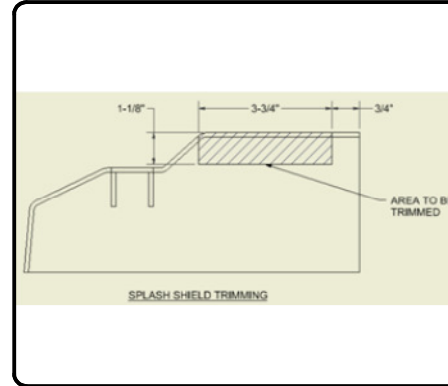
6) Position the side plates against the frame rails over the 7/16" carriage bolts and secure using 7/16" hex flange nuts. Torque all 7/16" hardware to 50 ft-lbs.



7) Raise the exhaust back into position and reinstall the rubber isolators.



8) Trim the splash shields and reinstall.



9) Reinstall the evaporative emissions canister. Install is now complete.



GROSS LOAD CAPACITY WHEN USED AS A WEIGHT CARRYING HITCH: 2,000 LBS. TRAILER WEIGHT & 200 LBS. TONGUE WEIGHT.

\*\*\*DO NOT EXCEED VEHICLE MANUFACTURER'S RECOMMENDED TOWING CAPACITY.\*\*\*

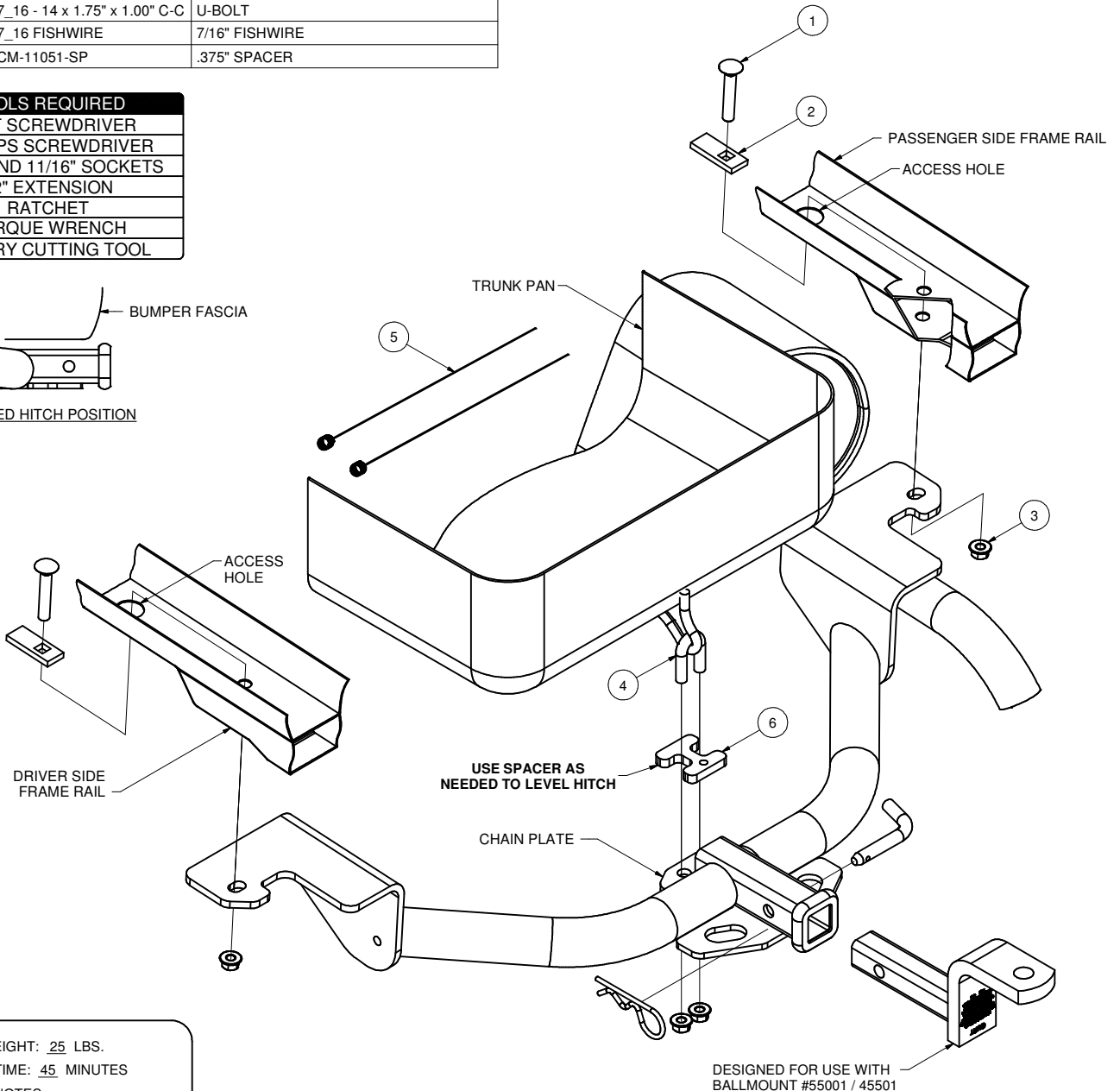
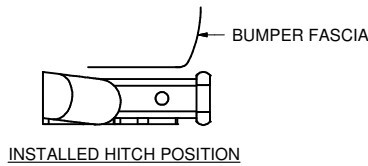
WARNING: ALL NON-TRAILER LOADS APPLIED TO THIS PRODUCT MUST BE SUPPORTED BY AUXILIARY STABILIZING STRAPS.

\*\* FAILURE TO PROPERLY SUPPORT NON-TRAILER LOADS WILL VOID PRODUCT WARRANTY\*\*

HAVING INSTALLATION QUESTIONS? CALL TECHNICAL SUPPORT AT 1-800-798-0813

Parts List			
ITEM	QTY	PART NUMBER	DESCRIPTION
1	2	7/16-14 x 2 1/2	CARRIAGE BOLT
2	2	CM-SP2	.250 x .88 x 2.25" SQUARE HOLE SPACER
3	4	7/16-14	HEX FLANGE NUT
4	1	7_16 - 14 x 1.75" x 1.00" C-C	U-BOLT
5	2	7_16 FISHWIRE	7/16" FISHWIRE
6	1	CM-11051-SP	.375" SPACER

TOOLS REQUIRED
FLAT SCREWDRIVER
PHILLIPS SCREWDRIVER
10mm AND 11/16" SOCKETS
12" EXTENSION
RATCHET
TORQUE WRENCH
ROTARY CUTTING TOOL



HITCH WEIGHT: 25 LBS.  
 INSTALL TIME: 45 MINUTES  
 INSTALL NOTES:  
 - NO DRILLING REQUIRED  
 - LOWER EXHAUST  
 - FISHWIRE HARDWARE  
 - TRIM SPLASH SHIELDS

**PERIODICALLY CHECK THIS RECEIVER HITCH TO ENSURE THAT ALL FASTENERS ARE TIGHT AND THAT ALL STRUCTURAL COMPONENTS ARE SOUND.**

Curt Manufacturing Inc., warrants this product to be free of defects in material and/or workmanship at the time of retail purchase by the original purchaser. If the product is found to be defective, Curt Manufacturing Inc., may repair or replace the product, at their option, when the product is returned, prepaid, with proof of purchase. Alteration to, misuse of, or improper installation of this product voids the warranty. Curt Manufacturing Inc.'s liability is limited to repair or replacement of products found to be defective, and specifically excludes liability for incidental or consequential loss or damage.

**\*\*\*DO NOT EXCEED VEHICLE MANUFACTURER'S RECOMMENDED TOWING CAPACITY.\*\*\***

**WARNING: ALL NON-TRAILER LOADS APPLIED TO THIS PRODUCT MUST BE SUPPORTED BY AUXILIARY STABILIZING STRAPS.**

**\*\* FAILURE TO PROPERLY SUPPORT NON-TRAILER LOADS WILL VOID PRODUCT WARRANTY\*\***

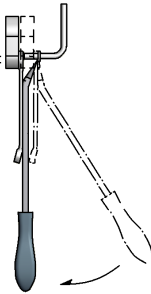
**HAVING INSTALLATION QUESTIONS? CALL TECHNICAL SUPPORT AT 1-800-798-0813**

#### RUBBER ISOLATOR REMOVAL DIAGRAM

This technique can be used if and Exhaust Hanger Removal Pliers is not available.

Using a 5/8" open end wrench, slide the wrench up to the rubber isolator, cradling the hanger rod as shown. Next place the flat edge of a pry bar between the wrench and the hanger stop or hanger rod. Then simply rotate the pry bar toward the wrench to remove the rubber isolator.

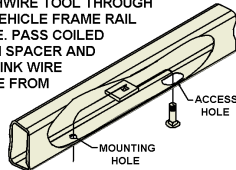
Note: Using a spray lubricant or soapy water on the hanger rod and the rubber isolator helps removal.



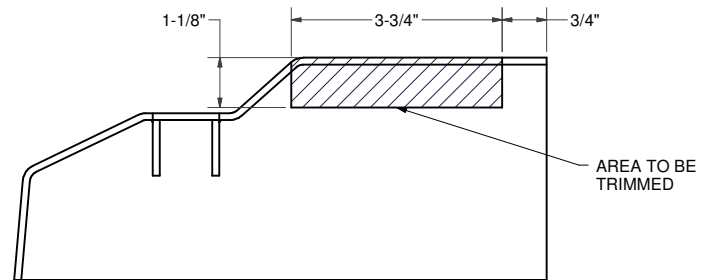
EVAPORATIVE  
EMISSIONS  
CANISTER

#### FISHWIRE TECHNIQUE

INSERT COILED END OF FISHWIRE TOOL THROUGH HITCH MOUNTING HOLE IN VEHICLE FRAME RAIL AND OUT THE ACCESS HOLE. PASS COILED END OF FISHWIRE THROUGH SPACER AND THREAD BOLT INTO COIL. KINK WIRE TO KEEP SPACER SEPARATE FROM BOLT AS SHOWN. PULL FISHWIRE, SPACER, AND BOLT THROUGH FRAME AND OUT MOUNTING HOLE. USE FISHWIRE TO GUIDE HITCH DURING MOUNTING AND PREVENT LOSS OF BOLT / SPACER INSIDE FRAME RAIL.



\*\*NOTE: SOME VEHICLES MAY FISHWIRE THROUGH END OF FRAME\*\*



SPLASH SHIELD TRIMMING

### INSTALLATIONS STEPS:

1. Lower the exhaust by removing the (2) rubber isolators from the hangers. (See Rubber Isolator Removal.)
2. Remove the (2) bolts retaining the evaporative emissions canister and allow it to hang. (See photo above.)
3. Remove the splash shields located in the rear wheel wells by removing the (3) screws and (3) push fasteners securing them.
4. Fishwire a 7/16-14 x 2-1/2" carriage bolt and CM-SP2 spacer through the access holes in the frame rails and into the rearmost holes in the frame rails as shown. (See Fishwire Technique.)

Also, hang the U-bolt through the tow loop at this time.

5. Raise the hitch into position and secure it to the tow loop using the u-bolt and (2) 7/16" hex flange nuts through the chain plate as shown. Take care not to push the fishwired carriage bolts back into the frame rails.

NOTE: On some models the supplied spacer may be required to level the hitch.

6. Position the side plates against the frame rails over the 7/16" carriage bolts and secure using 7/16" hex flange nuts as shown.
7. Torque all 7/16" hardware to 50 ft-lbs.
8. Raise the exhaust back into position and reinstall the rubber isolators.
9. Trim the splash shields and reinstall. (See Splash Shield Trimming.)
10. Reinstall the evaporative emissions canister.

**PERIODICALLY CHECK THIS RECEIVER HITCH TO ENSURE THAT ALL FASTENERS ARE TIGHT AND THAT ALL STRUCTURAL COMPONENTS ARE SOUND.**

Curt Manufacturing Inc., warrants this product to be free of defects in material and/or workmanship at the time of retail purchase by the original purchaser. If the product is found to be defective, Curt Manufacturing Inc., may repair or replace the product, at their option, when the product is returned, prepaid, with proof of purchase. Alteration to, misuse of, or improper installation of this product voids the warranty. Curt Manufacturing Inc.'s liability is limited to repair or replacement of products found to be defective, and specifically excludes liability for incidental or consequential loss or damage.