

YEARS: 2014

MAKE: MERCEDES-BENZ

MODEL: SLK250

STYLE: CONVERTIBLE

WARNING: NEVER EXCEED YOUR VEHICLE MANUFACTURER'S RECOMMENDED TOWING CAPACITY

WEIGHT CARRYING:
 TRAILER WEIGHT: 1,000 LBS.
 TONGUE WEIGHT: 100 LBS.

WARNING:
 WE RECOMMEND THE USE OF 18050 STABILIZING STRAPS FOR ALL NON-TRAILER (WHEEL-LESS) LOADS. PLEASE SEE THE CURT CATALOG OR VISIT US ONLINE AT WWW.CURTMFG.COM FOR FURTHER INFORMATION.

PRO INSTALL TIME: 120 MIN.
NOVICE INSTALL TIME: 240 MIN.

IF YOU ARE HESITANT TO UNDERTAKE THIS TASK ON YOUR OWN, CONTACT AN AUTHORIZED CURT INSTALLER FOR ADDITIONAL ASSISTANCE.

INSTALLATION REQUIRES:

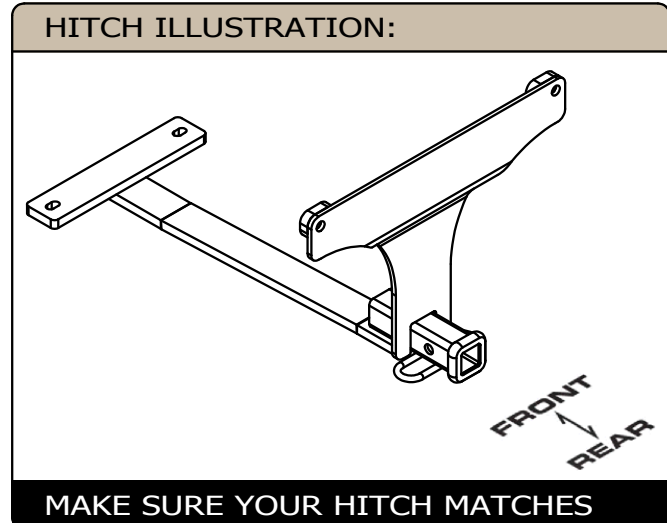
| | | |
|--------------------|------------------------|--------------------------|
| RATCHET | 6 in. SOCKET EXTENSION | 3/4 in. 10mm 17mm SOCKET |
| SCREW DRIVER | TORQUE WRENCH | MASKING TAPE |
| SAFETY GLASSES | DIE GRINDER | TAPE MEASURE |
| PANEL REMOVAL TOOL | RECIPROCATING SAW | |

INSTALLATION TIPS:

- BEFORE YOU BEGIN INSTALLATION, READ ALL INSTRUCTIONS THOROUGHLY.
- TO EASE INSTALLATION, 2 PEOPLE MAY BE REQUIRED.
- USING PROPER TOOLS WILL GREATLY IMPROVE THE QUALITY OF THE INSTALL AND REDUCE THE TIME REQUIRED.
- NEED HELP OR HAVE SOME QUESTIONS? CALL TECHNICAL SUPPORT AT 800.798.0813

LEVEL OF DIFFICULTY: CHALLENGING

| EASY | MODERATE | CHALLENGING |
|------|---|-------------|
| | DRILLING / HOLE ENLARGEMENT REQUIRED | |
| | FISHWIRE HARDWARE | |
| | CLEAN EXISTING WELDNUTS | |
| | TEMPORARILY REMOVE TRUNK CONTENTS, INTERIOR PANEL, BUMPER COVER | |
| | TRIM FOAM BUMPER PAD AND REAR FASCIA | |



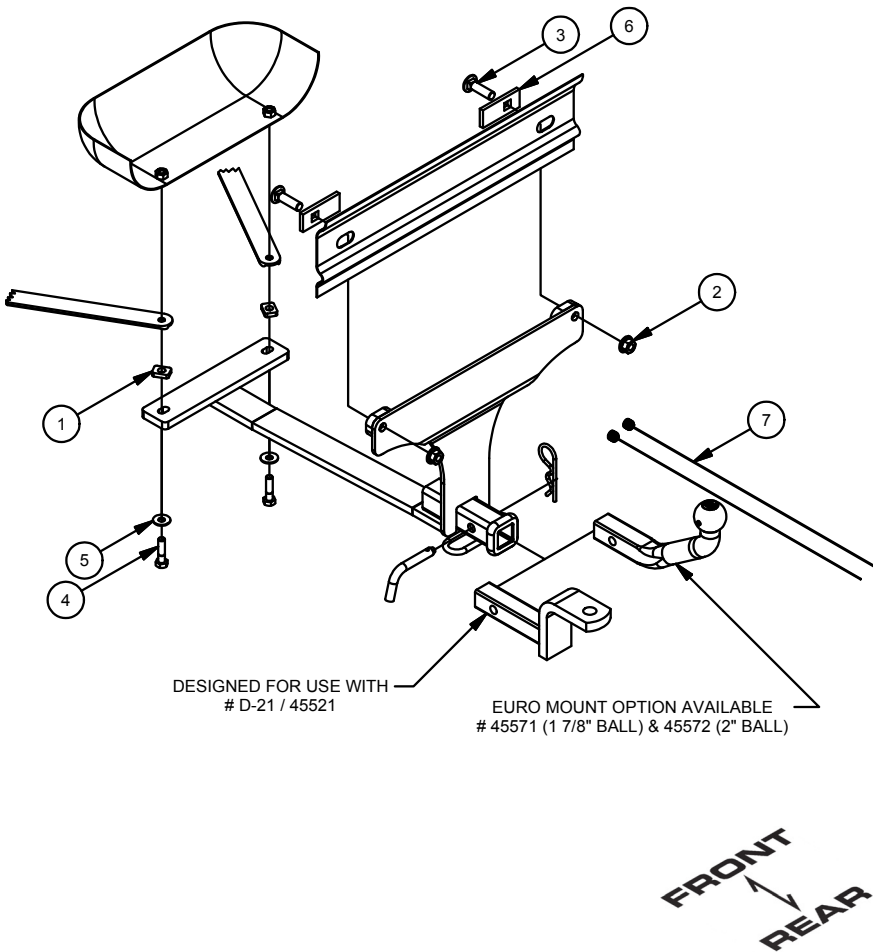
PERIODICALLY CHECK THIS RECEIVER HITCH TO ENSURE ALL FASTENERS ARE TIGHT AND ALL STRUCTURAL COMPONENTS ARE SOUND

CURT Manufacturing LLC. warrants this product to be free of defects in material and/or workmanship at the time of retail purchase by the original purchaser. If the product is found to be defective, Curt Manufacturing LLC. may repair or replace the product at their option, when the product is returned, prepaid, with proof of purchase. Alteration to, misuse of, or improper installation of this product voids the warranty. Curt Manufacturing LLC.'s liability is limited to repair or replacement of products found to be defective, and specifically excludes liability for incidental or consequential loss or damage.

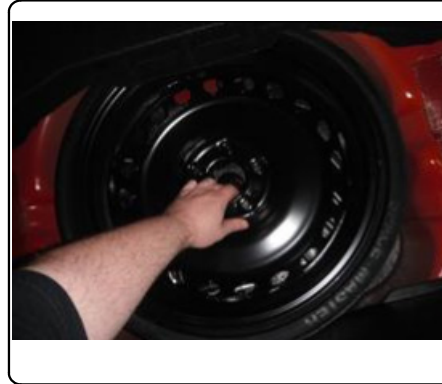
For more information log onto www.curtmfg.com, & for helpful towing tips log onto www.hitchinfo.com

INSTALLATION WALKTHROUGH:

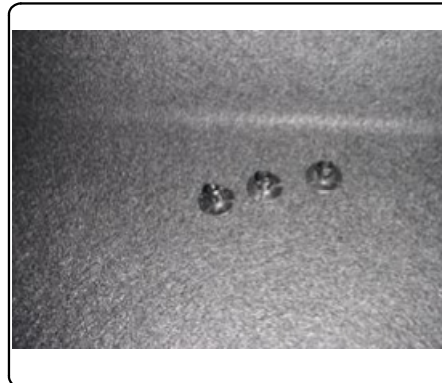
| Parts List | | | |
|------------|-----|---------------------|--|
| ITEM | QTY | PART NUMBER | DESCRIPTION |
| 1 | 2 | 11376-SP | .250" SPACER PLATE |
| 2 | 2 | HFN 1213, GR8 | HEX FLANGE NUT |
| 3 | 2 | 1/2-13 x 1 3/4, GR8 | CARRIAGE BOLT |
| 4 | 2 | M10 - 1.5 x 40mm | HEX BOLT |
| 5 | 2 | 3/8" | CONICAL TOOTHED WASHER |
| 6 | 2 | CM-SP19 | .250 x 1.25 x 3.00" SQUARE HOLE SPACER |
| 7 | 2 | 1_2 FISHWIRE | 1/2" FISHWIRE |



1. Remove trunk contents including the spare tire cover, spare tire, and spare tire tool kit.

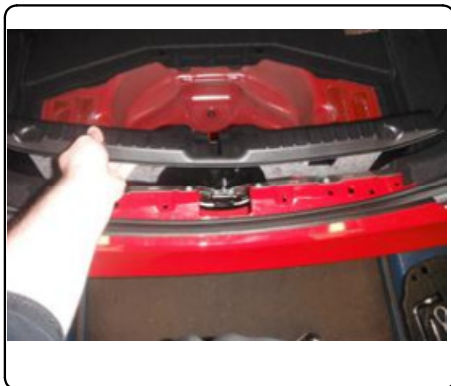


2. Using a flat head screwdriver, remove three (3) plugs from bottom of rear interior panel.

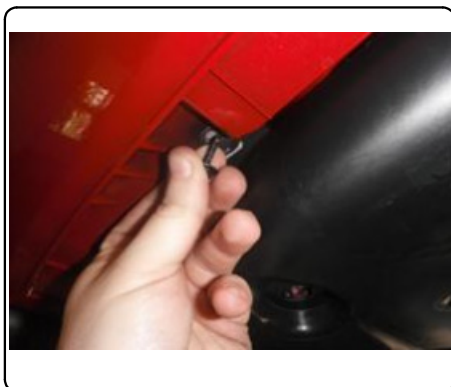


INSTALLATION WALKTHROUGH:

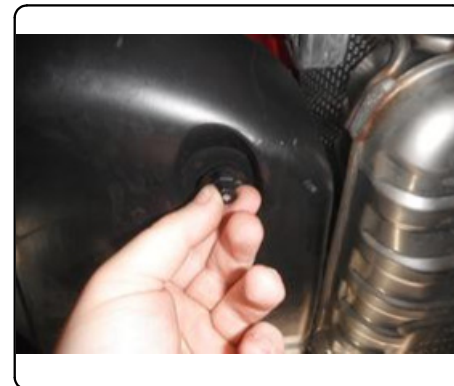
3. Gently remove rear panel.



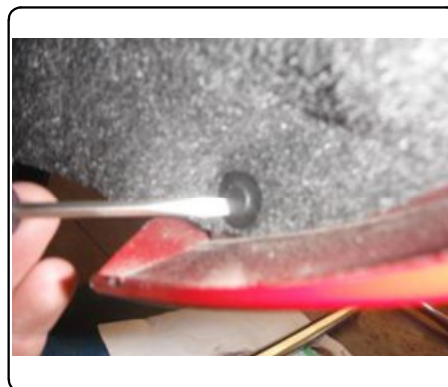
4. Using a 10mm socket, remove two (2) underbody screws connecting rear fascia to underbody panel.



5. Using a 10 mm socket, remove two (2) plastic nuts from underbody panel (1 per side). Do not remove middle nut.

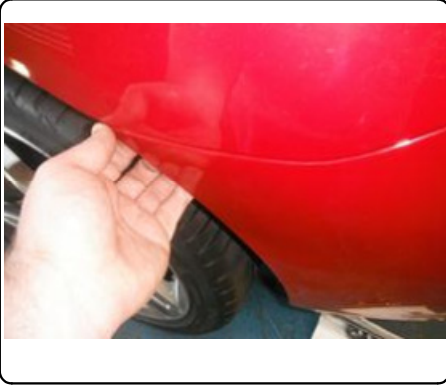


6. Using a flat head screwdriver, remove three (3) plastic clips from each wheel well (6 total) connecting the rear fascia.

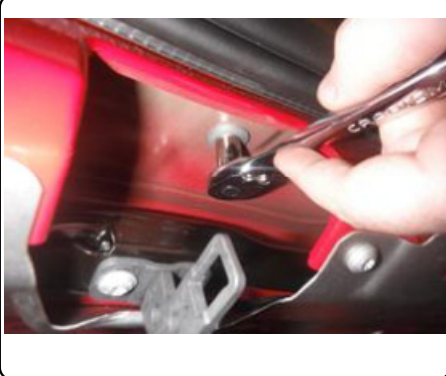


INSTALLATION WALKTHROUGH:

7. Gently pull corners of rear fascia loose. Using a panel removal tool, gently detach clips (5 per side) located below tail lights.



8. Using a 10mm socket, remove center nut from inside of trunk.



9. Gently remove rear fascia.



10. Detach foam bumper pad from rear of fascia.



INSTALLATION WALKTHROUGH:

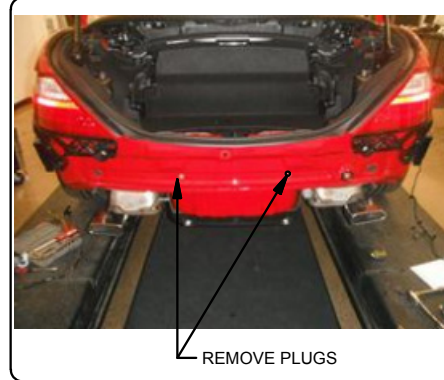
11. Detach electrical connections (4 connectors and 1 clip) from rear fascia.



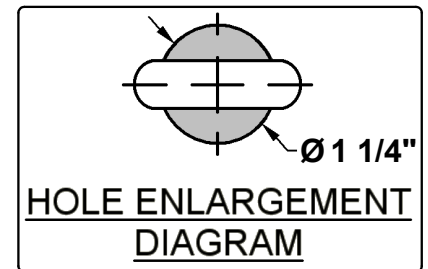
12. Using a T50 Torx bit, remove two (2) M10 screws connecting underbody supports to trunk pan.



13. Remove two (2) plastic plugs from rear body panel.



14. Using a die grinder, enlarge two (2) holes where plastic plugs were removed. Enlarge holes as little as possible to allow CM-SP19 and carriage bolts to pass through. (See Hole Enlargement Diagram)



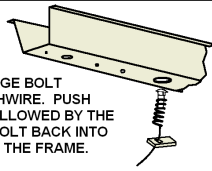
INSTALLATION WALKTHROUGH:

15. Reverse fishwire 1/2" carriage bolts and CM-SP19 spacers into the enlarged holes. Fishwires should remain attached to prevent loss of hardware. (See Reverse Fishwire Diagram)

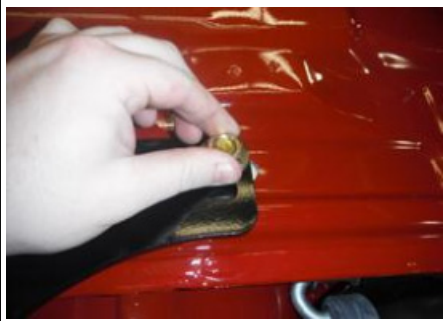


REVERSE PULL FISHWIRE TECHNIQUE

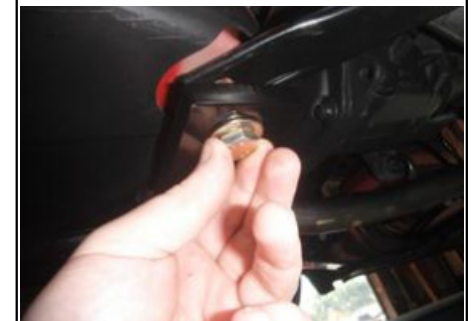
ATTACH FISHWIRE TO CARRIAGE BOLT AND SLIDE SPACER ONTO FISHWIRE. PUSH THE BOLT THRU THE HOLE FOLLOWED BY THE SPACER (AS SHOWN). PULL BOLT BACK INTO POSITION, PROTRUDING FROM THE FRAME.



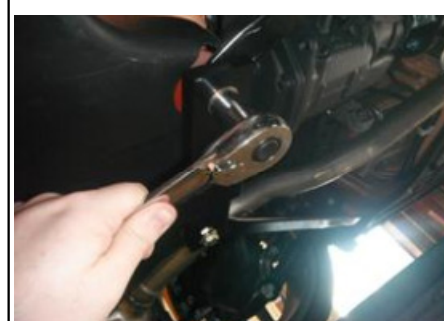
16. Thread fishwires through hitch mounting holes and raise hitch into position and loosely install 1/2" hex flange nuts onto the carriage bolts.



17. Place CM-11376-SP spacers between forward mounting plate and underbody supports. Loosely install M10 hex bolts and 3/8" conical toothed washers into the existing vehicle weldnuts.

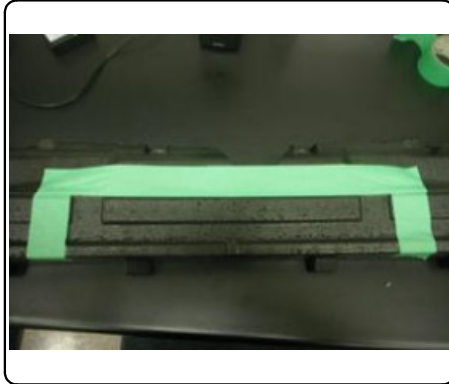
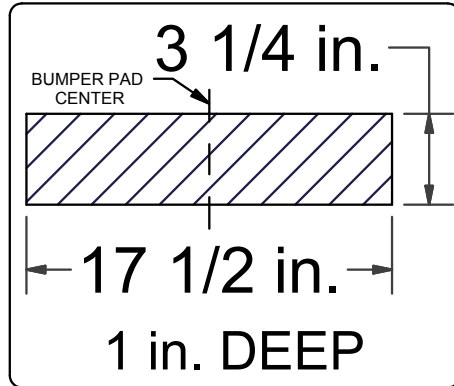


18. Using a 3/4" socket, torque 1/2" hardware to 110 lb-ft. Using a 17mm socket, torque M10-1.50 hardware to 56 lb-ft.

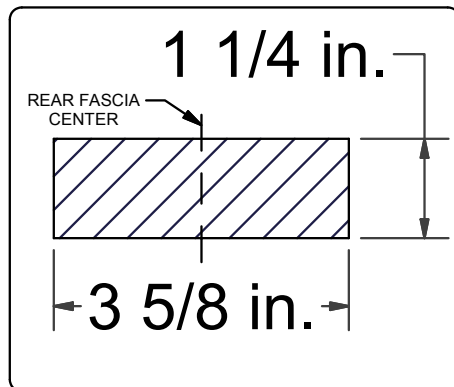


INSTALLATION WALKTHROUGH:

19. Mark with masking tape and trim with reciprocating saw the foam bumper pad. (See Foam Bumper Pad Trim Diagram)



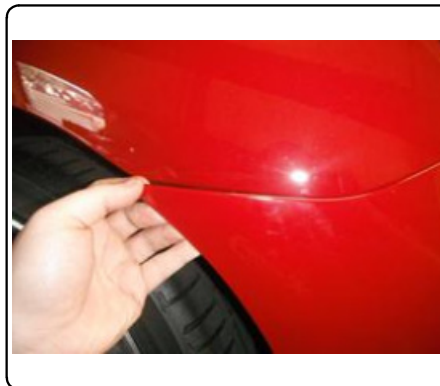
20. Mark with masking tape and trim with die grinder the rear fascia. (See Rear Fascia Trim Diagram)



21. Reassemble rear fascia with foam bumper pad and reattach electrical connections.



22. Reattach rear fascia in reverse order of removal.



INSTALLATION WALKTHROUGH:

24. Reattach interior panel in reverse order of removal.



25. Reinstall spare tire kit, spare tire and spare tire cover.



26. Install complete.



11376

MERCEDES-BENZ SLK250

10/4/13

PAGE 1 of 3

GROSS LOAD CAPACITY WHEN USED AS A WEIGHT CARRYING HITCH: 1,000 LBS. TRAILER WEIGHT & 100 LBS. TONGUE WEIGHT.

DO NOT EXCEED VEHICLE MANUFACTURER'S RECOMMENDED TOWING CAPACITY.

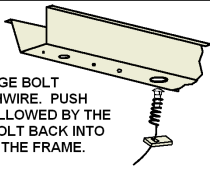
WARNING: ALL NON-TRAILER LOADS APPLIED TO THIS PRODUCT MUST BE SUPPORTED BY 18050 STABILIZING STRAPS.

** FAILURE TO PROPERLY SUPPORT NON-TRAILER LOADS WILL VOID PRODUCT WARRANTY**

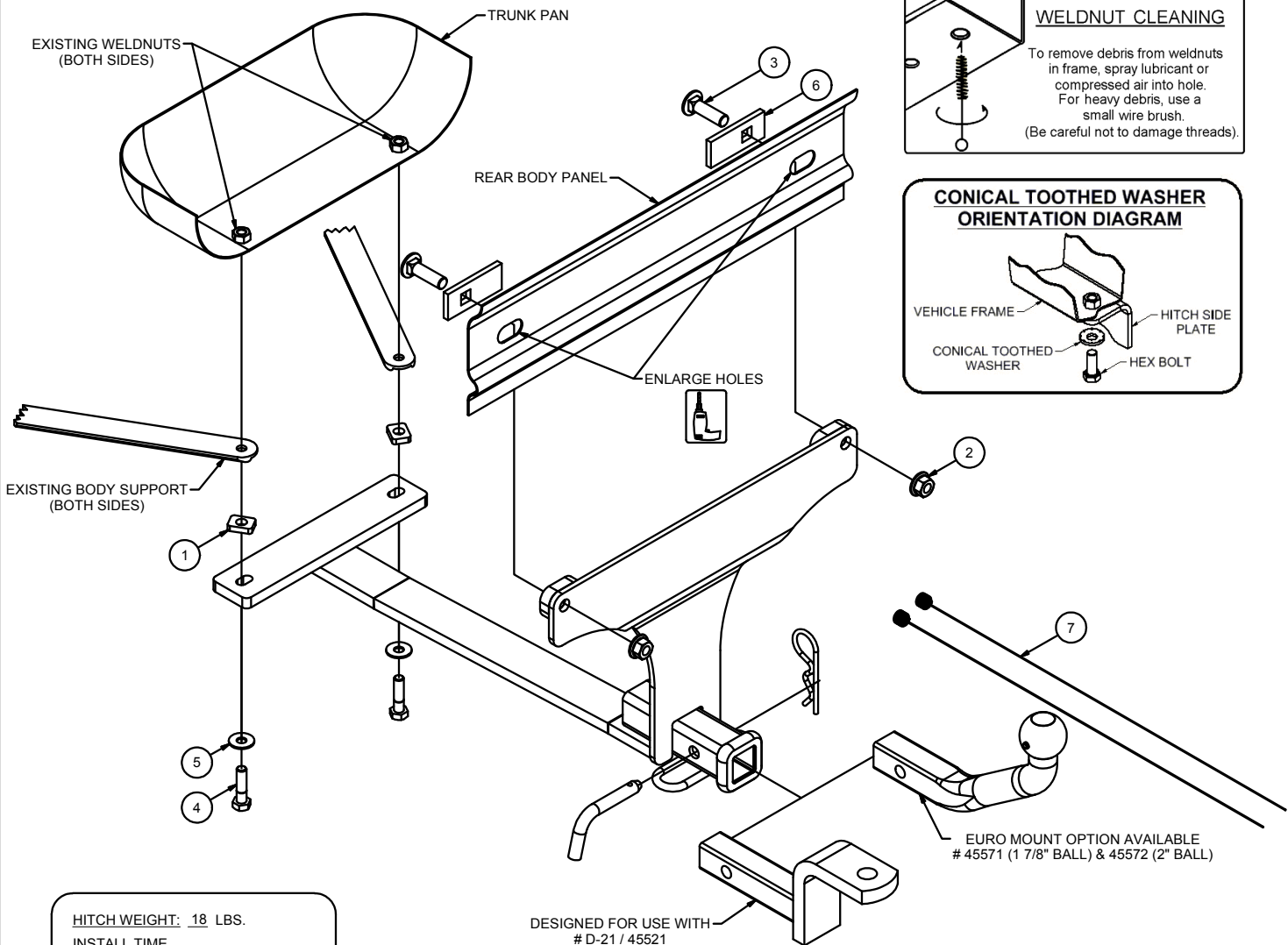
HAVING INSTALLATION QUESTIONS? CALL TECHNICAL SUPPORT AT 1-800-798-0813

REVERSE PULL FISHWIRE TECHNIQUE

ATTACH FISHWIRE TO CARRIAGE BOLT AND SLIDE SPACER ONTO FISHWIRE. PUSH THE BOLT THRU THE HOLE FOLLOWED BY THE SPACER (AS SHOWN). PULL BOLT BACK INTO POSITION, PROTRUDING FROM THE FRAME.



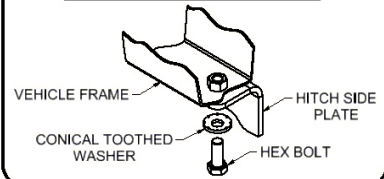
| Parts List | | | |
|------------|-----|---------------------|--|
| ITEM | QTY | PART NUMBER | DESCRIPTION |
| 1 | 2 | 11376-SP | .250" SPACER PLATE |
| 2 | 2 | HFN 1213, GR8 | HEX FLANGE NUT |
| 3 | 2 | 1/2-13 x 1 3/4, GR8 | CARRIAGE BOLT |
| 4 | 2 | M10 - 1.5 x 40mm | HEX BOLT |
| 5 | 2 | 3/8" | CONICAL TOOTHED WASHER |
| 6 | 2 | CM-SP19 | .250 x 1.25 x 3.00" SQUARE HOLE SPACER |
| 7 | 2 | 1_2 FISHWIRE | 1/2" FISHWIRE |



WELDNUT CLEANING

To remove debris from weldnuts in frame, spray lubricant or compressed air into hole. For heavy debris, use a small wire brush. (Be careful not to damage threads).

CONICAL TOOTHED WASHER ORIENTATION DIAGRAM



HITCH WEIGHT: .18 LBS.

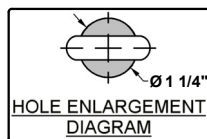
INSTALL TIME

PROFESSIONAL: 120 MINUTES

NOVICE (DIY): 240 MINUTES

INSTALL NOTES:

- DRILLING REQUIRED
- TRIM FASCIA
- TRIM FOAM INSERT
- TEMP. REMOVE TRUNK CONTENTS
- TEMP. REMOVE FASCIA
- FISHWIRE HARDWARE



DESIGNED FOR USE WITH # D-21 / 45521

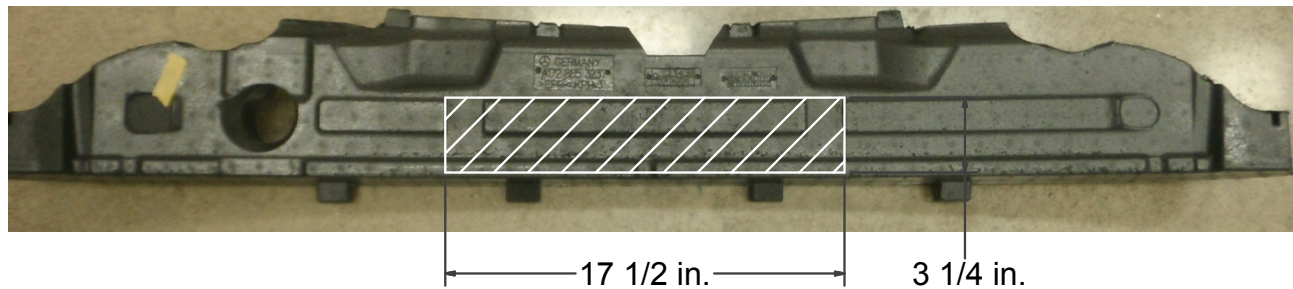
FRONT
↑
REAR

PERIODICALLY CHECK THIS RECEIVER HITCH TO ENSURE THAT ALL FASTENERS ARE TIGHT AND THAT ALL STRUCTURAL COMPONENTS ARE SOUND.

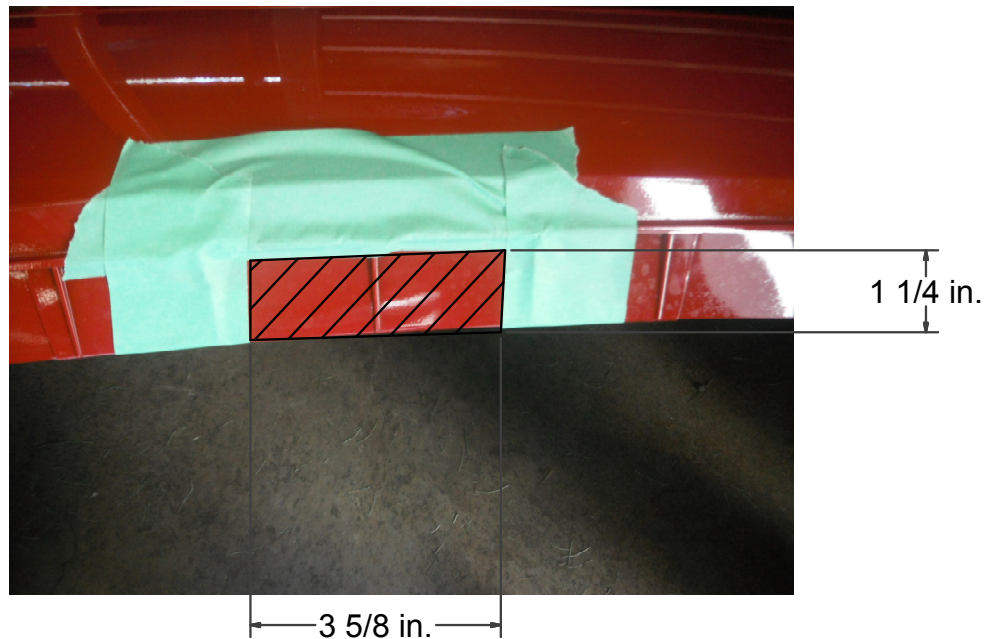
Curt Manufacturing LLC., warrants this product to be free of defects in material and/or workmanship at the time of retail purchase by the original purchaser. If the product is found to be defective, Curt Manufacturing LLC., may repair or replace the product, at their option, when the product is returned, prepaid, with proof of purchase. Alteration to, misuse of, or improper installation of this product voids the warranty. Curt Manufacturing LLC.'s liability is limited to repair or replacement of products found to be defective, and specifically excludes liability for incidental or consequential loss or damage.

HAVING INSTALLATION QUESTIONS? CALL TECHNICAL SUPPORT AT 1-800-798-0813

| TOOLS REQUIRED |
|----------------------|
| RATCHET |
| 6" SOCKET EXTENSION |
| 3/4" SOCKET |
| 10mm SOCKET |
| 17mm SOCKET |
| FLAT HEAD SCRWDRIVER |
| TORQUE WRENCH |
| MASKING TAPE |
| SAFETY GLASSES |
| PANEL REMOVAL TOOL |
| DIE GRINDER |
| TAPE MEASURE |
| RECIPROCATING SAW |



FOAM BUMPER PAD TRIM DIAGRAM
CUT 1 in. DEEP



REAR FASCIA TRIM DIAGRAM

PERIODICALLY CHECK THIS RECEIVER HITCH TO ENSURE THAT ALL FASTENERS ARE TIGHT AND THAT ALL STRUCTURAL COMPONENTS ARE SOUND.

Curt Manufacturing LLC., warrants this product to be free of defects in material and/or workmanship at the time of retail purchase by the original purchaser. If the product is found to be defective, Curt Manufacturing LLC., may repair or replace the product, at their option, when the product is returned, prepaid, with proof of purchase. Alteration to, misuse of, or improper installation of this product voids the warranty. Curt Manufacturing LLC.'s liability is limited to repair or replacement of products found to be defective, and specifically excludes liability for incidental or consequential loss or damage.

INSTALLATION STEPS

1. Remove trunk contents including the spare tire cover, spare tire, and spare tire tool kit.
2. Using a flat head screwdriver, remove three (3) plugs from bottom of rear interior panel.
3. Gently remove rear panel.
4. Using a 10mm socket, remove two (2) underbody screws connecting rear fascia to underbody panel.
5. Using a 10 mm socket, remove two (2) plastic nuts from underbody panel (1 per side). Do not remove middle nut.
6. Using a flat head screwdriver, remove three (3) plastic clips from each wheel well (6 total) connecting the rear fascia.
7. Gently pull corners of rear fascia loose. Using a panel removal tool, gently detach clips (5 per side) located below tail lights.
8. Using a 10mm socket, remove center nut from inside of trunk.
9. Gently remove rear fascia.
10. Detach foam bumper pad from rear of fascia.
11. Detach electrical connections (4 connectors and 1 clip) from rear fascia.
12. Using a T50 Torx bit, remove two (2) M10 screws connecting underbody supports to trunk pan.
13. Remove two (2) plastic plugs from rear body panel.
14. Using a die grinder, enlarge two (2) holes where plastic plugs were removed. Enlarge holes as little as possible to allow CM-SP19 and carriage bolts to pass through.
(See Hole Enlargement Diagram)
15. Reverse fishwire 1/2" carriage bolts and CM-SP19 spacers into the enlarged holes. Fishwires should remain attached to prevent loss of hardware. (See Reverse Fishwire Diagram)
16. Thread fishwires through hitch mounting holes and raise hitch into position and loosely install 1/2" hex flange nuts onto the carriage bolts.
17. Place CM-11376-SP spacers between forward mounting plate and underbody supports.
18. Loosely install M10 hex bolts and 3/8" conical toothed washers into the existing vehicle weldnuts.
19. Using a 3/4" socket, torque 1/2" hardware to 110 lb-ft. Using a 17mm socket, torque M10-1.50 hardware to 56 lb-ft.
20. Mark with masking tape and trim with reciprocating saw the foam bumper pad.
(See Foam Bumper Pad Trim Diagram)
21. Mark with masking tape and trim with die grinder the rear fascia.
(See Rear Fascia Trim Diagram)
22. Reassemble rear fascia with foam bumper pad and reattach electrical connections.
23. Reattach rear fascia in reverse order of removal.
24. Reattach interior panel in reverse order of removal.
25. Reinstall spare tire kit, spare tire and spare tire cover.

PERIODICALLY CHECK THIS RECEIVER HITCH TO ENSURE THAT ALL FASTENERS ARE TIGHT AND THAT ALL STRUCTURAL COMPONENTS ARE SOUND.