

# 55369

## JEEP GRAND CHEROKEE

### English

#### WIRING LOCATION GUIDE GUÍA DE UBICACIÓN DEL CABLEADO IDE D'EMPLACEMENT DES FILS



#### MUST READ FIRST!

All steps must be followed to ensure correct function of the T-Connector. To verify proper installation once installed, test by connecting a test light or properly wired trailer.

#### ¡DEBE LEERSE PRIMERO!

Debe seguirse todos los pasos para asegurar el correcto funcionamiento del Conector-T. Para verificar la correcta instalación, pruebe conectando una luz de prueba o un remolque debidamente cableado.

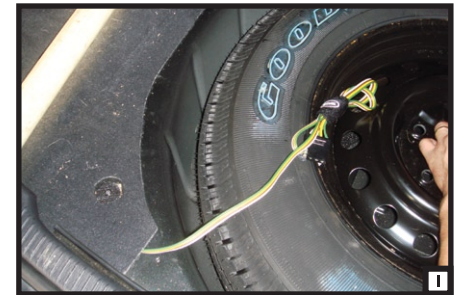
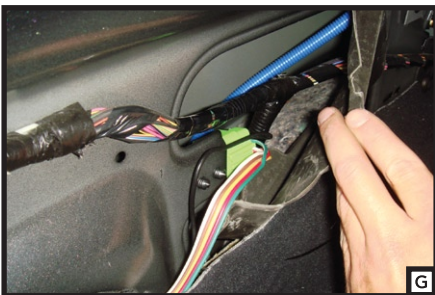
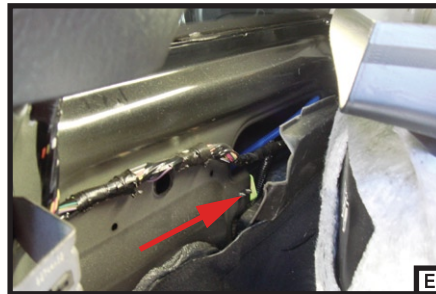
#### À LIRE D'ABORD!

Pour assurer le bon fonctionnement du T-Connector, il faut suivre toutes les étapes. Pour vérifier que l'installation a été bien effectuée, branchez un feu de test ou une remorque correctement filée.

3/1/2011

1. Open the rear door of the vehicle and remove the cargo cover and cargo net (A).
2. Remove rear threshold by removing the (2) screws holding it in place (B,C).
3. Remove one screw on the driver side trim panel and pull back panel to gain access to the green vehicle harness (D,E,F).
4. Plug the green T-Connector housing into the green vehicle harness housing. Make sure they're fully inserted and lock into place by pushing the red lock tab to the side (G).
5. Mount the black converter box behind the driver side panel near the vent using the double-sided tape provided (H). Insert the 10 AMP fuse provided into the red inline fuse holder.
6. Route the 4-flat under the side panel into the tire area for storage. Route the harness out of the tail gate when in use.
7. Reinstall all items removed during install.

INSTALLATION QUESTIONS? CALL TECHNICAL SUPPORT AT 1-800-798-0813





55369