

# 56002

SUZUKI SX4  
SUZUKI GRAND VITARA

## WIRING LOCATION GUIDE GUÍA DE UBICACIÓN DEL CABLEADO IDE D'EMPLACEMENT DES FILS



### MUST READ FIRST!

All steps must be followed to ensure correct function of the T-Connector. To verify proper installation once installed, test by connecting a test light or properly wired trailer.

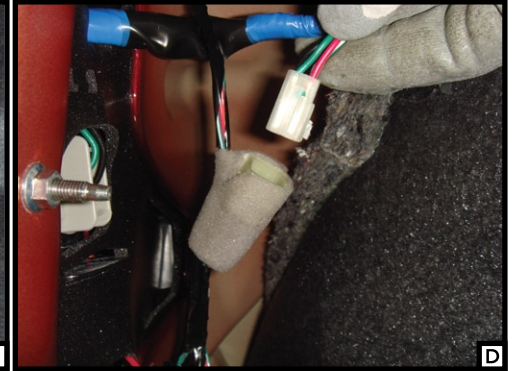
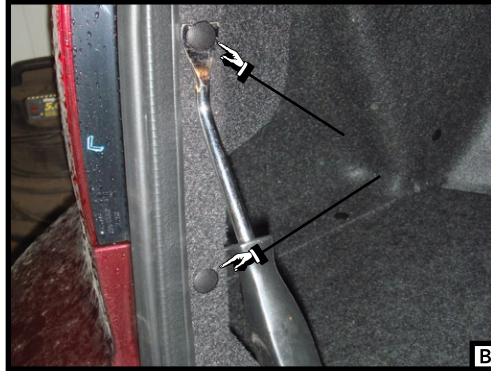
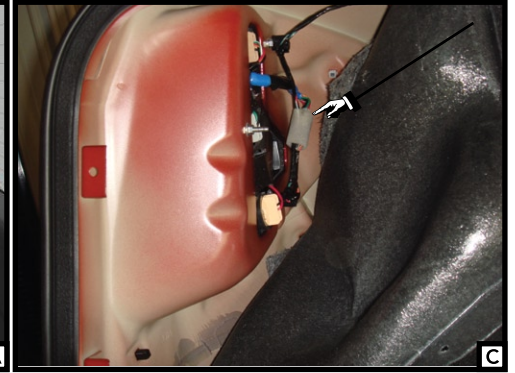
### ¡DEBE LEERSE PRIMERO!

Debe seguirse todos los pasos para asegurar el correcto funcionamiento del Conector-T. Para verificar la correcta instalación, pruebe conectando una luz de prueba o un remolque debidamente cableado.

### À LIRE D'ABORD!

Pour assurer le bon fonctionnement du T-Connector, il faut suivre toutes les étapes. Pour vérifier que l'installation a été bien effectuée, branchez un feu de test ou une remorque correctement filéée.

03/12/09



## English

1. Open the rear hatch and remove floor coverings and rear scuff panel. [A] On both sides of the vehicle partially remove felt trim liner by removing two plastic fasteners holding trim liner in place. [B] Behind the felt trim liner locate the vehicles taillight wiring harness in will be wrapped in foam. [C] Unwrap foam and separate connectors making sure not to damage the locking tabs. [D]

2. Starting on the drivers side insert the T-connector end with the yellow wire in-between the separated connectors. Make sure the connectors are fully inserted with locking tabs in place.

3. Route the T-connector end with the green wire out from behind the rear trim panel under the removed scuff panel and under the trim panel on the passenger side. Repeat step 2 on the passenger side using the green wire.

4. On the drivers side locate a suitable grounding point near the connector such as an existing screw with nut in the vehicle's frame or drill a 3/32" hole and secure white wire using eyelet and screw provided.

5. Adhere the black converter box to the frame of the car using the double-sided tape provided. Secure any loose parts of the T-connector with the cable ties provided.

6. Route the 4-flat wire to the center of the vehicle and out the trunk when in use. When not in use roll up and store in an out of the way location in the trunk.

### WARNING!

Verify miscellaneous items that may be hidden behind or under any surface before drilling to avoid damage and/or personal injury.



56002