

56018

SATURN VUE

WIRING LOCATION GUIDE GUÍA DE UBICACIÓN DEL CABLEADO IDE D'EMPLACEMENT DES FILS



MUST READ FIRST!

All steps must be followed to ensure correct function of the T-Connector. To verify proper installation once installed, test by connecting a test light or properly wired trailer.

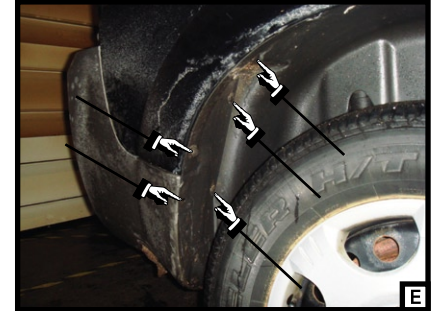
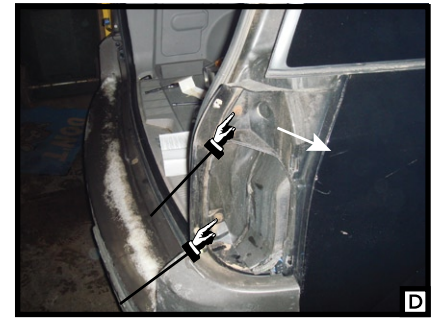
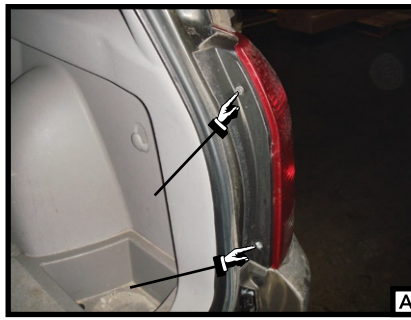
¡DEBE LEERSE PRIMERO!

Debe seguirse todos los pasos para asegurar el correcto funcionamiento del Conector-T. Para verificar la correcta instalación, pruebe conectando una luz de prueba o un remolque debidamente cableado.

À LIRE D'ABORD!

Pour assurer le bon fonctionnement du T-Connector, il faut suivre toutes les étapes. Pour vérifier que l'installation a été bien effectuée, branchez un feu de test ou une remorque correctement filéée.

01/05/10



English

1. Open the hatch and remove both taillight assemblies by removing two Torx-15 head screws on each. **[A][B]** Behind the taillight assemblies locate the vehicles taillight wiring harness the harness will have connectors similar to those on the T-connector harness. Separate the connectors being sure not to damage the locking tabs. **[C]** Set taillight assemblies aside.

2. On the both sides of the vehicle, in the taillight pocket remove two 10 mm nuts and carefully pull back on the rear quarter panel to make an opening to route the connectors through. **[D]**

3. Partially remove rear wheel wells and mud guards by removing plastic fasteners holding each in place. **[E]** Carefully pull back on the wheel well to gain access to pull wires down to the bumper fascia level. On the passengers side insert the T-connector end with the green wire in-between the separated connectors make sure the connectors are fully inserted with locking tabs in place. **[F]**

4. From the passengers's side taillight pocket route the T-connector end with the yellow wire ,the 4-flat, and the black converter box down through the opening made in step 2 and 3. **[G][H][I]** From underneath the vehicle route both wires reward to the backside of the bumper fascia. Route the 4-flat to the center of the vehicle. Route the yellow wire to the driver's side and up to the drivers side taillight.

5. Adhere the black converter box to the frame, behind the rear quarter panel of the car, using the double-sided tape provided. Secure any loose parts of the T-connector with the cable ties provided.

6. On the driver's side insert the T-connector end with yellow wire in-between the separated connectors.

7. Secure the 4-flat to the center of the vehicle in a convenient out of the way location. Re-assemble anything removed during installation.

WARNING!

Verify miscellaneous items that may be hidden behind or under any surface before drilling to avoid damage and/or personal injury.



56018