

# 56022

NISSAN MAXIMA  
NISSAN ALTIMA  
NISSAN SENTRA

## WIRING LOCATION GUIDE GUÍA DE UBICACIÓN DEL CABLEADO IDE D'EMPLACEMENT DES FILS



### MUST READ FIRST!

All steps must be followed to ensure correct function of the T-Connector. To verify proper installation once installed, test by connecting a test light or properly wired trailer.

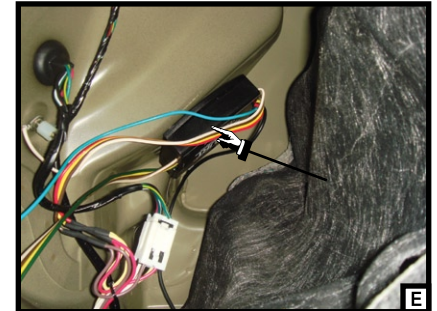
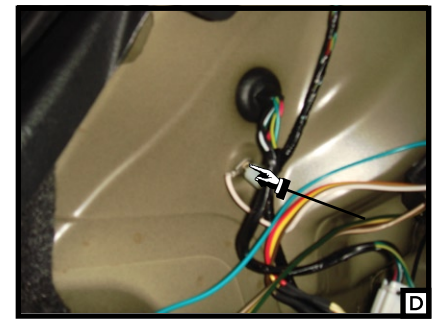
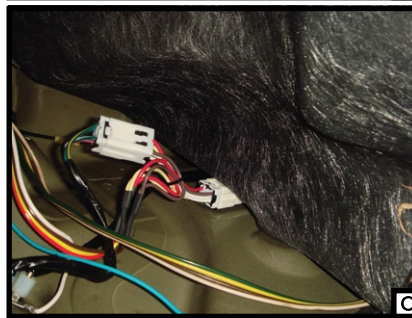
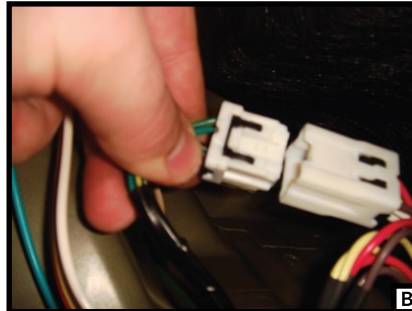
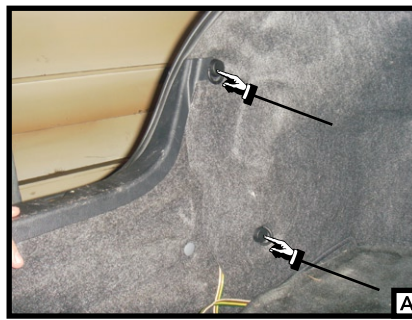
### ¡DEBE LEERSE PRIMERO!

Debe seguirse todos los pasos para asegurar el correcto funcionamiento del Conector-T. Para verificar la correcta instalación, pruebe conectando una luz de prueba o un remolque debidamente cableado.

### À LIRE D'ABORD!

Pour assurer le bon fonctionnement du T-Connector, il faut suivre toutes les étapes. Pour vérifier que l'installation a été bien effectuée, branchez un feu de test ou une remorque correctement filée.

3/24/09



## English

1. Open the trunk and remove the 4 plastic fasteners holding the rear scuff panel and felt trim liner in place. [A] Remove the scuff panel and partially remove the felt trunk liner to reveal the vehicles taillight wiring harness.
2. Starting on the drivers side separate the vehicles connectors being sure not to damage the locking tabs. [B] Insert the T-connector end with the yellow wire in-between the separated connectors. Make sure the connectors are fully inserted with locking tabs in place. [C]
3. Route the T-connector end with the green wire behind the felt trim liner under the removed scuff to the passenger side. Repeat step 2 on the passenger side using the green wire.
4. Locate a suitable grounding point near the connector such as an existing screw with nut in the vehicle's frame or drill a 3/32" hole and secure white wire using eyelet and screw provided. [D]
5. Adhere the black converter box to the frame of the car using the double-sided tape provided. [E] Secure any loose parts of the T-connector with the cable ties provided.
6. Route the black power wire from the battery as shown on the CME-PCL-INS sheet included. Route the black wire through any rubber grommet in the trunk area if applicable to the black converter.
7. Route the 4-flat wire to the center of the vehicle and out the trunk when in use. When not in use roll up and store in an out of the way location in the trunk.

### WARNING!

Verify miscellaneous items that may be hidden behind or under any surface before drilling to avoid damage and/or personal injury.