

56038 ACURA MDX

WIRING LOCATION GUIDE GUÍA DE UBICACIÓN DEL CABLEADO IDE D'EMPLACEMENT DES FILS



MUST READ FIRST!

All steps must be followed to ensure correct function of the T-Connector. To verify proper installation once installed, test by connecting a test light or properly wired trailer.

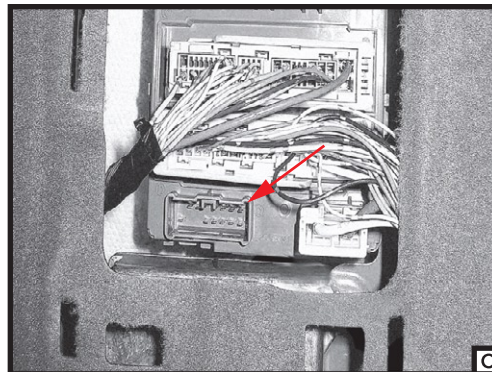
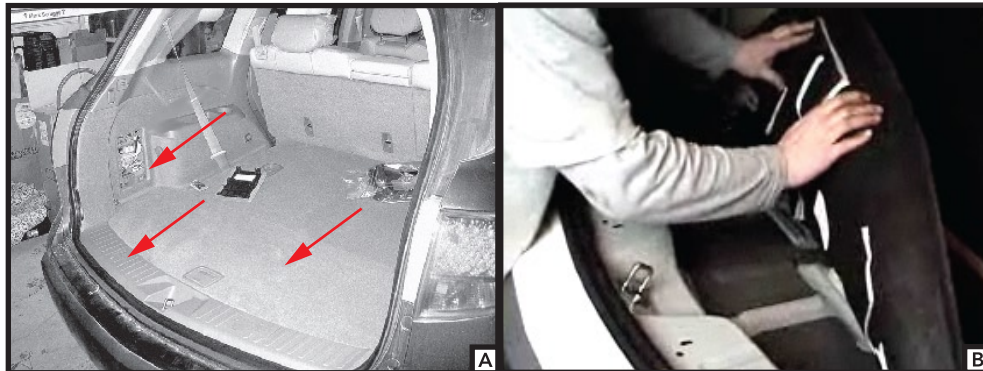
¡DEBE LEERSE PRIMERO!

Debe seguirse todos los pasos para asegurar el correcto funcionamiento del Conector-T. Para verificar la correcta instalación, pruebe conectando una luz de prueba o un remolque debidamente cableado.

À LIRE D'ABORD!

Pour assurer le bon fonctionnement du T-Connector, il faut suivre toutes les étapes. Pour vérifier que l'installation a été bien effectuée, branchez un feu de test ou une remorque correctement filéée.

10/25/10



English

1. Open the rear hatch and remove the access door on the driver's side rear scuff panel (A). Open the rear storage door and remove storage tray and jack storage door and pull back on black cargo liner (B).

2. Route the driver side harness connector under the trim panel up to the the junction box inside the removed access door. Insert the harness connector into the receptacle in the junction box (C).

WARNING!

Verify miscellaneous items that may be hidden behind or under any surface before drilling to avoid damage and/or personal injury.

3. Locate a suitable grounding point near the connector such as an existing screw with nut in the vehicle's frame or drill a 3/32" hole and secure white wire using eyelet and screw provided.

4. Adhere the black converter box to the frame of the vehicle using the double-sided tape provided. Secure any loose parts of the T-Connector with the cable ties provided.

5. Route the 4-flat wire to the center of the vehicle and out the hatch when in use. When not in use roll up and store in an out of the way location in the rear cargo area.

6. Reinstall all items removed during installation.