

# 56064

LINCOLN MKS

FORD FIESTA HATCHBACK

## WIRING LOCATION GUIDE GUÍA DE UBICACIÓN DEL CABLEADO IDE D'EMPLACEMENT DES FILS



### MUST READ FIRST!

All steps must be followed to ensure correct function of the T-Connector. To verify proper installation once installed, test by connecting a test light or properly wired trailer.

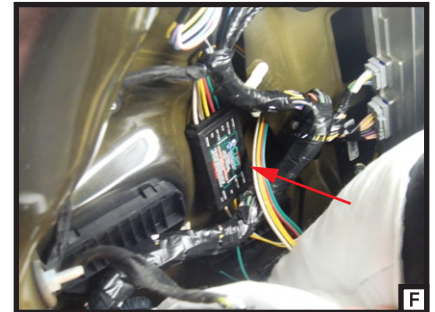
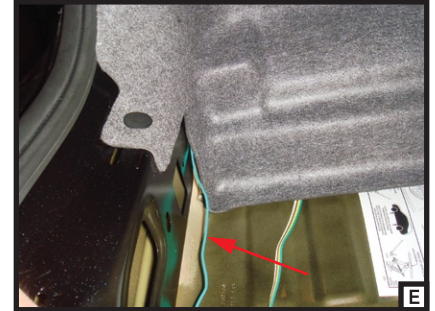
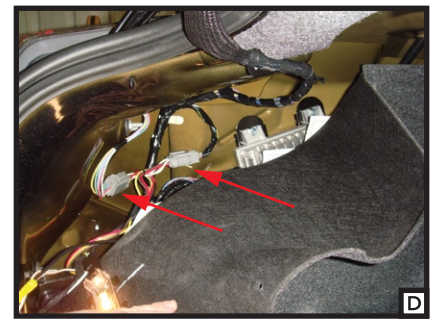
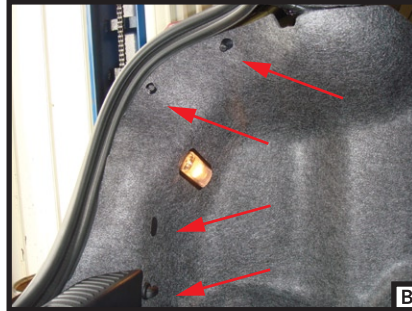
### ¡DEBE LEERSE PRIMERO!

Debe seguirse todos los pasos para asegurar el correcto funcionamiento del Conector-T. Para verificar la correcta instalación, pruebe conectando una luz de prueba o un remolque debidamente cableado.

### À LIRE D'ABORD!

Pour assurer le bon fonctionnement du T-Connector, il faut suivre toutes les étapes. Pour vérifier que l'installation a été bien effectuée, branchez un feu de test ou une remorque correctement filée.

8/27/2010



## English

1. Open the trunk and remove the rear scuff panel (A). Partially remove the felt trunk liner behind both taillight housings by removing several plastic fasteners holding it in place (B). Behind the trunk liner locate the vehicle's taillight wiring harness. The harness will have connectors similar to those on the T-connector wiring harness (C).

2. Starting on the driver's side separate the connectors being sure not to damage the locking tabs. Insert the T-connector end with the yellow wire in-between the separated connectors. Make sure the connectors are fully inserted with locking tabs in place (D).

3. Route the T-connector end with the green wire out from behind the felt trim liner and behind the scuff panel to the passenger side (E). Repeat Step 2 on the passenger side using the green wire.

**WARNING!**  
Verify miscellaneous items that may be hidden behind or under any surface before drilling to avoid damage and/or personal injury.

4. Locate a suitable grounding point near the connector such as an existing screw with nut in the vehicle's frame or drill a 3/32" hole and secure white wire using eyelet and screw provided.

5. Adhere the black converter box to the frame of the car using the double-sided tape provided (F). Secure any loose parts of the T-connector with the cable ties provided.

6. Review the CME-PCL-INS instruction sheet and route the black power wire from the battery to the converter as shown on the CME-PCL-INS sheet included. Route the black wire through a rubber grommet in the trunk area if possible.

7. Route the 4-flat wire to the center of the vehicle and out the trunk when in use. When not in use roll up and store in an out of the way location in the trunk.



56064