

# RV TOW Harness Wiring Kit

## INSTALLATION INSTRUCTIONS

Fits: Chevrolet HHR  
Chevrolet Cobalt 2 Dr.  
Pontiac G5 2 Dr.  
Pontiac G5 Pursuit  
(Canada Only)

### Kit Includes:

- (1) Wiring Harness with 4-Flat Connector
- (1) 48" 4-Flat Extension
- (20) 15" Cable Tie
- (1) 4-Flat Bracket
- (3) #8 Self-Tapping Ground Screw

## RV TOW HARNESS INSTALLATION INSTRUCTIONS

### 1. Read instructions thoroughly before beginning.

#### Chevrolet HHR

- 2. Open the rear tailgate. Remove floor cover, rear storage cover and spare tire cover and set aside.
- 3. Using a 10mm socket remove bolts holding cargo tie downs that hold the plastic side panels in place.
- 4. Use a small flat screwdriver to remove side panels on both side to gain access to factory harness connectors shown in **Figure 1**. Unplug factory connectors from taillight connectors.



Figure 1

- 5. Starting on driver's side route RV harness with connectors containing Yellow wires through the opening at the bottom of plastic side panel shown in **Figure 2**. Position connectors between separated vehicle harness connectors. Press connectors firmly into vehicle connectors until they lock into place. Pull on connectors to ensure the locks are engaged.

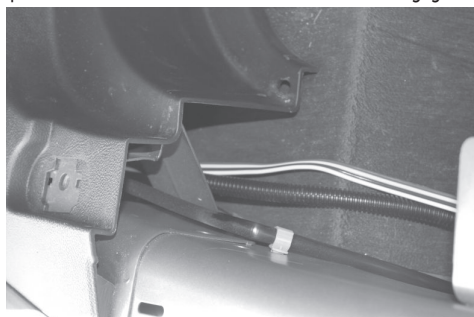


Figure 2

- 6. Locate the factory ground ring post on the drivers side and use a 10mm socket to remove the nut shown in **Figure 3**.

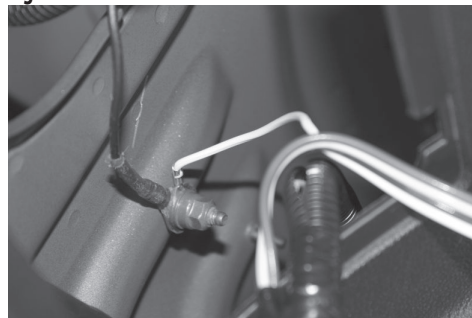


Figure 3

- 7. Place the RV Harness ground ring with the factory ground ring and tighten down the nut removed in Step 6.
- 8. Route portion of RV Harness with connectors containing Green wires from bottom of side wall panel along the rear of vehicle and up behind passenger side panel. Repeat Step 5 for connector plugging.
- 9. Cut the cable ties on 4-Flat portion of harness and unplug the cream-colored 4-pin connectors. Locate the existing grommet along the back wall of the vehicle shown in **Figure 4**.

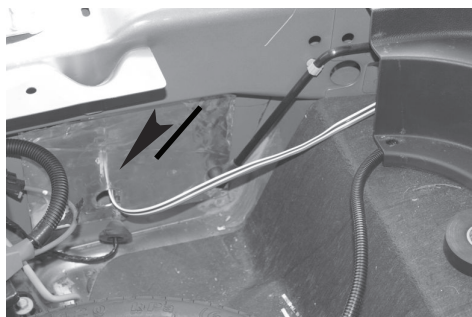


Figure 4

- 10. Remove grommet and make a slit in it to allow for RV harness wiring. From underneath the vehicle route the portion of 4-Flat harness with the Female connector through the hole in vehicle from Step 9. Plug the Male 4-pin connector into 4-pin Female connector on inside portion of RV Harness. Place grommet around 4-Flat wires and reseal grommet and it may be necessary to apply silicone to seal grommet where cut was made.
- 11. Underneath vehicle route fish tape over exhaust to drivers rear wheel well area. Starting at the left side of rear driver's side wheel well route a fish tape up and over to the right side. It may be necessary to remove plastic clips holding wheel well cover in place. Secure the 4-Flat connector to it and pull through wheel well cover.
- 12. Continue routing towards front of vehicle along the frame by the plastic trim piece shown in **Figure 5** and secure with cable ties until you reach the driver's side front wheel well.



Figure 5

- 13. Repeat Step 11 to route 4-Flat through driver's side wheel well.

- 14. Route 4-Flat to frame rail that goes across the front of vehicle shown in **Figure 6**. Locate a suitable position to mount 4-Flat bracket also shown in **Figure 6**. Using the bracket as a template mark the two holes and drill two 3/32" holes and attach the bracket using the two screws. **\*Caution: Take care not to drill through the body or any exposed surface.\***

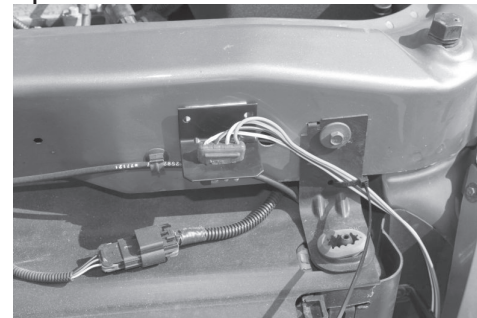


Figure 6

**Caution: Make sure to avoid areas that contain moving parts or could cut, pinch or burn the wires when routing the 4-flat harness towards the front of the vehicle. Also avoid routing harness near the fuel lines as it may cause the fuel to ignite.**

**Failure to follow these warnings may cause property damage, personal injury or loss of life.**

- 15. With the 4-flat extension plugged into the RV harness on one end and the motorhome on the other, test that the functions work on the Chevrolet HHR. These functions will only work on the brake/tail combination lamp.

### 4-Flat Harness Color Code:

- White - Ground
- Brown - Tail Light
- Green - Right Turn and Brake Signal
- Yellow - Left Turn and Brake Signal

When not in use store the 4-flat extension in the vehicles glove box.

- 16. At the rear of the vehicle secure any loose wires to the vehicle's crossmember using cable ties provided. Re-install taillights to vehicle.

NOTE: THIS RV HARNESS ALSO INCLUDES A CONNECTION POINT LABELED "FOR TRAILER TOW USE ONLY: TAILLIGHT REQUIRED." IF YOU DECIDE TO LEAVE YOUR RV HARNESS ON THE VEHICLE AT ALL TIMES AND WANT TO TOW A TRAILER SIMPLY PLUG IN 4-FLAT HARNESS PART NUMBER 58918 AND YOU'RE READY TO TOW.

# RV TOW HARNESS

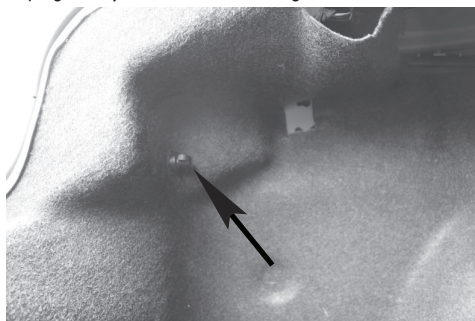
## INSTALLATION INSTRUCTIONS

### 1. Read instructions thoroughly before beginning.

#### Chevrolet Cobalt & Pontiac G5

2. Open the rear tailgate and remove spare tire cover and set aside.

3. Remove wing nut holding felt liner in place on both sides to gain access to taillight connectors shown in **Figure 1**. Unplug factory connectors from taillight connectors.



**Figure 1**

4. Starting on driver's side route RV harness with connectors containing Yellow wires through the opening at the bottom of felt side panel. Position connectors between separated vehicle harness connectors shown in **Figure 2**. Press connectors firmly into vehicle connectors until they lock into place. Pull on connectors to ensure the locks are engaged.



**Figure 2**

5. Locate a clean and accessible mounting location on the vehicle near the RV harness ends within reach of white wire and ring terminal. Remove any debris or undercoating to expose a clean metal surface and drill a 3/32" hole.

**\*Caution: Take care not to drill through the body or any exposed surface.\***

6. Attach ring terminal on the White wire using the ground screw provided.

7. Route portion of RV Harness with connectors containing Green wires from bottom of felt side wall panel along the rear of vehicle and up behind passenger side panel. Repeat Step 4 for connector plugging.

8. Cut the cable ties on 4-Flat portion of harness. Locate grommet behind felt liner on drivers side shown in **Figure 3**.



**Figure 3**

9. Remove grommet and make a slit in it to allow for RV harness wiring and route 4-Flat through opening. Do not seat grommet at this time. Excess slack will have to be stored behind the felt liner for the Cobalt/G5. Leave 4-Pin connectors plugged in as they are only used on the HHR.

10. Remove push clips in driver's side rear wheel well cover. Starting at the left side of rear driver's side wheel well route a fish tape up and over to the right side. Secure the 4-Flat connector to it and pull through wheel well cover shown in **Figure 4**.



**Figure 4**

11. Continue routing towards front of vehicle along the brake lines all the way up and into the engine compartment.

**Caution: Make sure to avoid areas that contain moving parts or could cut, pinch or burn the wires when routing the 4-flat harness towards the front of the vehicle. Also avoid routing harness near the fuel lines as it may cause the fuel to ignite.**

**Failure to follow these warnings may cause property damage, personal injury or loss of life.**

12. Once inside engine compartment, route to right side around the battery shown in **Figure 5**.



**Figure 5**

13. Continue routing to front of vehicle along factory wire harness to location shown in **Figure 6**.



**Figure 6**

14. Locate a suitable position to mount 4-Flat bracket also shown in **Figure 6**. Using the bracket as a template mark the two holes and drill two 3/32" holes and attach the bracket using the two screws.

**\*Caution: Take care not to drill through the body or any exposed surface.\***

15. Once 4-Flat and bracket are secured pull slack in 4-Flat harness back through engine compartment, along brake lines, through rear wheel well and back into trunk area. Secure the 4-Flat harness to brake lines and in engine compartment with cable ties.

16. Place grommet around 4-Flat wires and reseal grommet and it may be necessary to apply silicone to seal grommet where cut was made.

17. With the 4-flat extension plugged into the RV harness on one end and the motorhome on the other, test that the functions work on the Chevrolet Cobalt and Pontiac G5. These functions will only work on the brake/tail combination lamp.

4-Flat Harness Color Code:

White - Ground

Brown - Tail Light

Green - Right Turn and Brake Signal

Yellow - Left Turn and Brake Signal

When not in use store the 4-flat extension in the vehicles glove box.

18. At the rear of the vehicle secure any loose wires to the vehicle's crossmember using cable ties provided. Re-install taillights to vehicle.

NOTE: THIS RV HARNESS ALSO INCLUDES A CONNECTION POINT LABELED "FOR TRAILER TOW USE ONLY: TAILLIGHT REQUIRED." IF YOU DECIDE TO LEAVE YOUR RV HARNESS ON THE VEHICLE AT ALL TIMES AND WANT TO TOW A TRAILER SIMPLY PLUG IN 4-FLAT HARNESS PART NUMBER 58918 AND YOU'RE READY TO TOW.