

**CHEVROLET SILVERADO 1500****23165**

2014

PART LIST				
ITEM	QTY	Part No.	Description	Max
1	1 PC	532760AA/BA	WINCH BUMPER	
2	1 SET	532760EA/FA	BRUSH GUARD	
3	1 SET	532760GA	LOWER BRACKET	
4	1 PC	502764BB	DRIVER SIDE BRACKET	
5	1 PC	502764CB	PASSENGER BRACKET	
6	1 PC	524764CA	AUXILIARY BRACKET	
7	1 SET	532760IA	LOWER AUXILIARY BRACKETS	
8	2 PCS	378312	"T" BOLT 1/2"	65 ft-Lb
9	4 PCS	524760AA	ROD BOLT	65 ft-Lb
10	6 PCS	AST-T197	CARRIAGE HEADED SCREW 1/2X 1 1/2"	70 ft-Lb
11	1 PCS	AST-T108	HEX HEAD BOLT 1/2 X 1 1/2" BLACK 1/2 X 1 1/2"	70 ft-Lb
12	7 PCS	AST-RP06	PLAIN WASHER 1/2"BLACK	
13	7 PCS	AST-RPR06	SPRING LOCK WASHER 1/2"BLACK	
14	7 PCS	AST-TU193	HEX NUT 1/2"BLACK	70 ft-Lb
15	6 PCS	AST-RP01	PLAIN WASHER 1/2" BLUE	
16	6 PCS	AST-RPR01	SPRING LOCK WASHER 1/2" BLUE	
17	6 PCS	AST-TU04	HEXAGONAL NUT 1/2" BLUE	70 ft-Lb
18	2 PCS	AST-T367	CARRIAGE HEADED BOLT 3/8" X 1 1/4" BLACK	30 ft-Lb
19	2 PCS	AST-RP12	PLAIN WASHER 3/8" BLACK	
20	2 PCS	AST-RPR07	SPRING LOCK WASHER 3/8" BLACK	
21	2 PCS	AST-TU43	HEX NUT 3/8" BLACK	30 ft-Lb

## REQUIRED TOOLS

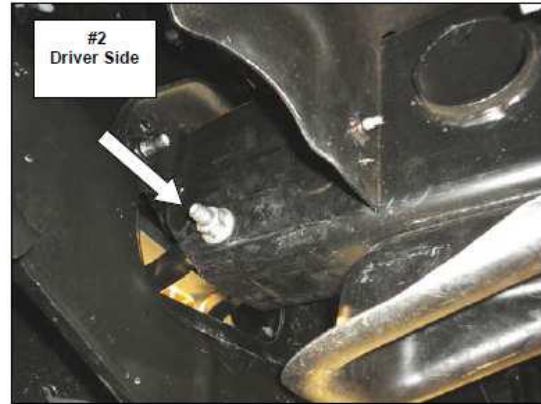
- A. 1/2" RATCHET WITH EXTENSION
- B. SOCKET 18mm
- C. WRENCH 18mm
- D. SOCKET 9/16"
- E. HEX KEY 7/32"
- F. SOCKET 3/4"

Read the installation instructions completely and verify that all of the parts listed are accounted for. If you have defective, missing or damaged parts or need assistance, please contact Go Rhino Products for fast, friendly customer service at: 1-888-427-4466 or email: warranty@gorhino.com

**Notes:**

If your vehicle is not equipped with factory tow hooks, attach the upper brackets and auxiliary bracket to the frame using the supplied 1/2" rod bolts, 1/2" flat washers, 1/2" lock washers and 1/2" hex nuts. Protect the plastic bumper cover prior to the installation.

**Step-1** Beginning with the driver side, remove the tow hook rear bolt, nut from the front bolt, (**Photo 1 & 2**) and the foam trim panel from the tow hook opening.



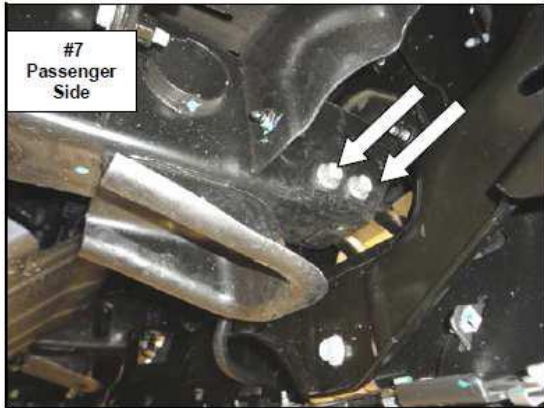
**Step-2** From the tow hook opening, slide the vehicle attachment end of the driver side upper bracket under the frame, rotate the bracket and position upper attachment hole in the bracket over the shank of the front tow hook bolt and reinstall the nut.



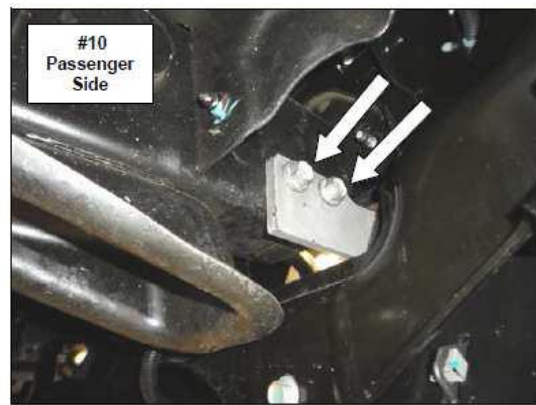
**Step-3** Attach the driver side auxiliary bracket to the side of the frame using the tow hook rear bolt and to the lower hole in the upper bracket using (1) ½" x 1 ½" carriage bolt, (1) ½" flat washer, (1) ½" lock washer and (1) ½" hex nut. (**Photo 5 & 6**).



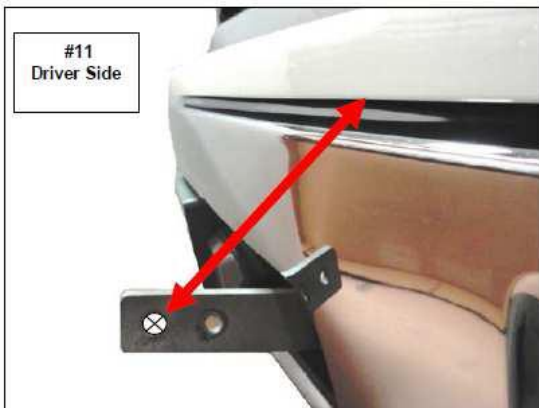
**Step-4** Passenger side, remove the tow hook front nut and bolt, rear bolt, (**Photo 7 & 8**) and the foam trim panel from the tow hook opening.



**Step-5** From the tow hook opening, slide the vehicle attachment end of the passenger side upper bracket under the frame, rotate the bracket and align the holes in the bracket with the holes in the frame and reinstall the tow hook front bolt and nut, then the rear bolt. (**Photo 9 & 10**)



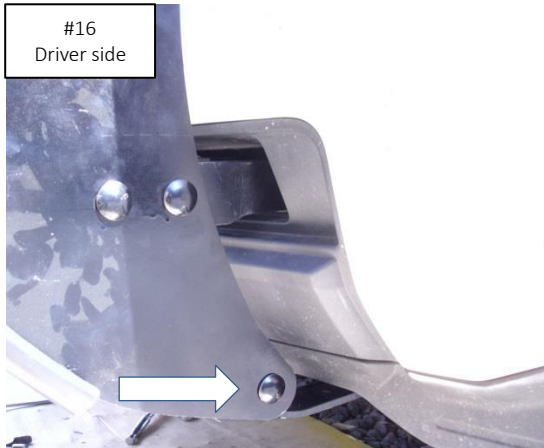
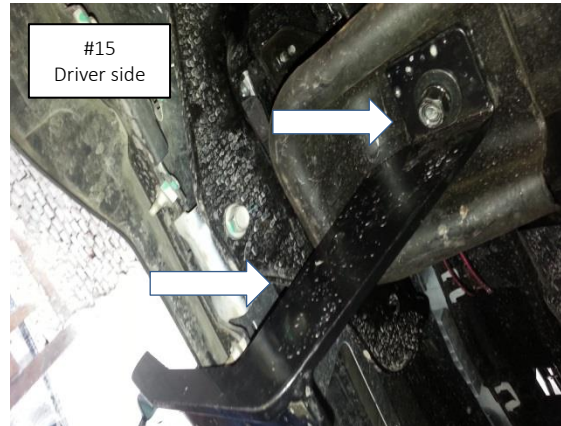
**Step-6** Place the center of the front hole in the driver and passenger side upper brackets approximately 8" from the bottom edge of the bumper cap, (**Photo 11**) and tighten all nuts and bolts securing the brackets. With assistance, position and attach the Winch Bumper to the outside of each upper bracket using (2) 1/2" x 1 1/2" carriage bolts, (2) 1/2" flat washers, (2) 1/2" lock washers and (2) 1/2" hex nuts, (**Photo 12&13**). Leave the nuts and bolts loose for final adjustment.







**Step - 7** Locate the hole in the bottom of the frame and install (1) 1/2" t-bolt, (**Photo 14 & 15**). Attach the driver side lower bracket to the frame using the T-Bolt, (1) 1/2" flat washer, (1) 1/2" lock washer and (1) 1/2" hex nut, and to the Winch bumper using (1) 1/2" x 1 1/2" carriage bolt, (1) 1/2" flat washer, (1) 1/2" lock washer and (1) 1/2" hex nut, (**Photo 16 & 17**). Repeat to install the passenger side lower bracket.



**Step-8** Hook the lower auxiliary bracket to the chassis (**Photo 18**). Bolt the lower auxiliary bracket to the lower bracket using (1) carriage screw 3/8" (1) plain washer 3/8" (1) spring lock washer 3/8" (1) nut 3/8" (**Photo 19**).



**Step - 9** Align the Winch bumper with the vehicle and tighten all factory and supplied nuts and bolts.



**Step - 10** Check and retighten the nuts and bolts every six months.