

15-18 FORD MUSTANG GT

CORSA[®]
PERFORMANCE



IMPORTANT! WARRANTY AND INSTALLATION INSTRUCTIONS

Please Forward All Information to Consumer

Be sure to review the enclosed instructions prior to beginning the installation process. If you have any questions about the enclosed parts or instructions, or if you encounter a problem during installation:

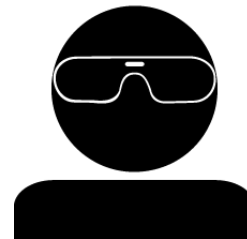
CALL TECHNICAL SUPPORT: 440.891.0999 or 800.486.0999

**TO ACTIVATE YOUR WARRANTY GO TO:
CORSAPERFORMANCE.COM/WARRANTY**

COLOR INSTRUCTIONS ARE AVAILABLE BY PART NUMBER ON: CORSAPERFORMANCE.COM



NEVER work on a hot exhaust system.
Allow time for the vehicle to cool.



Always wear eye protection
when working under a vehicle.

INSTALL DIFFICULTY 

RECOMMENDED TOOLS & SUPPLIES

- 3/8" Drive Ratchet
- 3/8" Drive Torque Wrench
- 3/8" Drive 13mm Socket
- 3/8" Drive 15mm Deep Socket
- Grommet Pullers
- Soap and Water Solution
- Torque Wrench
- Penetrating Lubricant Spray

2015-2018 FORD MUSTANG GT 5.0L V8

3.0" Cat-Back Dual Rear Exit w/ Single or Quad Tips

Sport Part #: 14332, 14337 – Xtreme Part #: 14328, 14335 (Incl. BLK & GNM)



Please take time to read and understand these installation instructions.

CORSA recommends that the installation of this system be performed by a qualified service center or professional installer who has the necessary equipment, tools, and experienced personnel. However, if you decide to perform this installation yourself, the use of an additional person may be required.

WARNING: Never work on a hot exhaust system. Allow time for the vehicle to cool. Always wear eye protection when working under a vehicle.

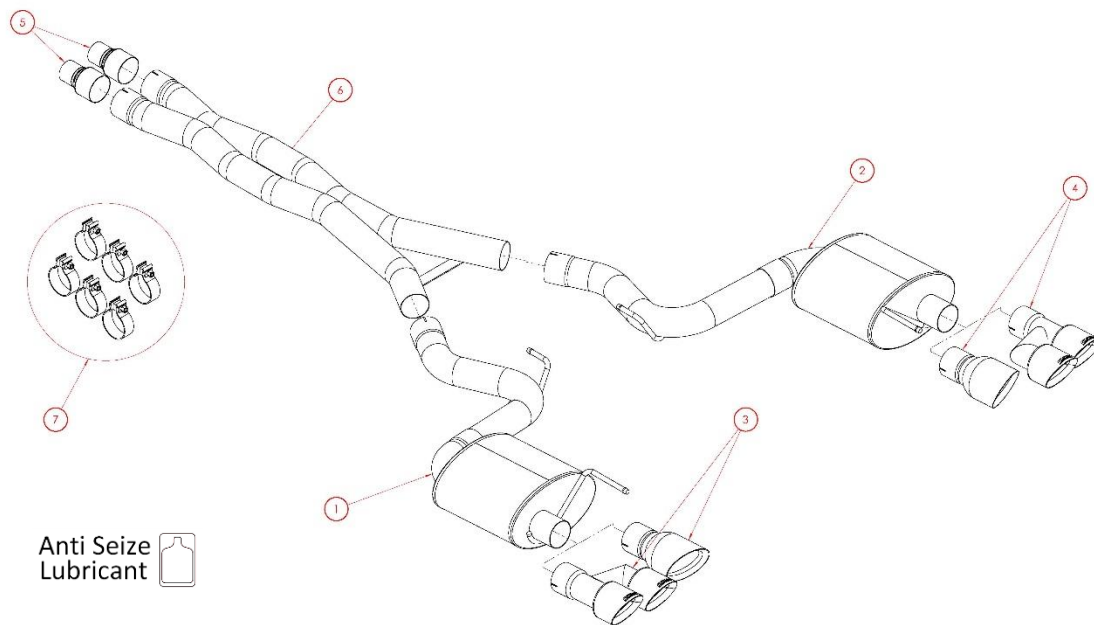
CORSA Performance makes no representation or warranty, expressed or implied that its downpipe or header products and or components there-in comply with federal, state or local emission levels, noise levels, or safety standards or that any of their parts conform with the racing vehicles exemption, unless otherwise noted. The purchaser assumes all responsibility for such use and compliance.

This warranty does not extend to damaged or defect in the finish of a product or to any product, that in the opinion of CORSA Performance, has been misused, damaged by accident or negligence, altered or modified in any way, faulty installation or installed contrary to CORSA installation instructions, or repaired by an unauthorized service facility.

Full warranty available on www.corsaperformance.com

Please confirm that all parts are present according to the bill of materials before beginning the installation.

If something is missing call Tech Support at 440.891.0999 or Toll Free: 1.800.486.0999



BILL OF MATERIALS

1.	Driver Muffler Assembly (Sport) (20MU2064) Driver Muffler Assembly (Touring) (20MU2080)	2.	Passenger Muffler Assembly (Sport) (20MU2065) Passenger Muffler Assembly (Touring) (20MU2081)
3.	Driver Single 4.5" Tip Assembly (20MU3010) Driver Quad 4.0" Tip Assembly (20MU3016)	4.	Passenger Single 4.5" Tip Assembly (20MU3011) Passenger Quad 4.0" Tip Assembly (20MU3017)
5.	X-Pipe Inlet to Stock Adapter (2) (20MU4076)	6.	Double X-Pipe Assembly (20MU4078)
7.	Hardware Kit (15AT7007)		

CAUTION: Never work on a hot exhaust system. Allow the vehicle to cool for at least an hour and a half. Always wear eye protection when working under a vehicle. It is recommended to use cotton gloves in order to protect stainless steel surfaces from permanent grease and oil stains.

REMOVAL INSTRUCTIONS

FACTORY EXHAUST



1. Use a 3/8" drive ratchet and 15mm deep socket, to loosen the two sleeve clamps at the cat-back connection point. Both nuts must be loosened in order for the clamp to fully disengage.



2. Use a 3/8" drive ratchet and 13mm socket, to remove the bolt holding down the driver side hanger grommet assembly.



3. Once the bolt is removed, push up slightly on the exhaust and slide the hanger grommet assembly rearward to free it from the rear suspension sub-frame. Rotate the hanger grommet assembly a minimum of 90° so that it will not interfere with the rear suspension sub-frame. **Save bolt for reinstallation (Install Step 9).** Repeat on the passenger side hanger grommet assembly.



4. Slide the stock exhaust assembly rearward until the stock resonator inlet pipes are free of the sleeve clamps. Lower the front of the exhaust in order to create clearance between the resonator inlet pipes and the sleeve clamps. Slide the complete exhaust forwards to remove the rear driver and passenger side hangers from their respective hanger grommets and free the stock exhaust from the vehicle. **NOTE:** The use of a soap and water solution may aid in the removal of hanger grommets.



5. Remove the driver and passenger side hanger grommet assemblies from the front muffler hangers using grommet pullers or a similar device. **Save for reinstallation (Install Step 5).** **NOTE:** The use of a soap and water solution may aid in the removal of hanger grommets.

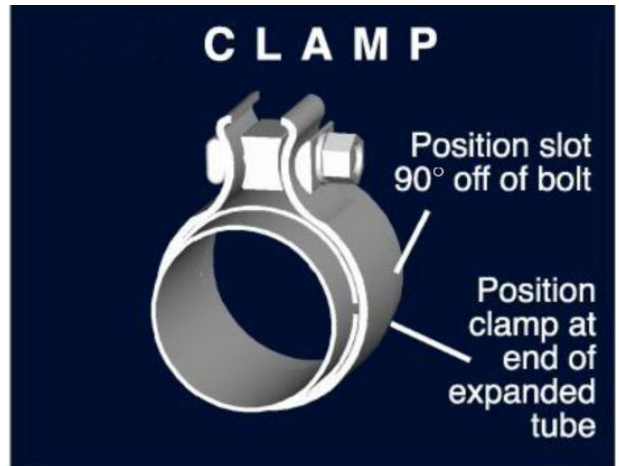
This concludes the removal of the factory exhaust.

WARNING! DO NOT SKIP THIS STEP!

Apply the anti-seize lubricant (*supplied*) to the threads **ONLY** of all the clamps and flange bolts. Failure to follow this procedure can cause nuts to seize on clamps and potentially destroy threads.

After applying anti-seize lubricant, be sure to **thoroughly** clean your hands, as lubricant will tarnish stainless steel.

All clamps should be tightened using a properly calibrated Torque Wrench. Using an air impact gun will damage the clamp and reduce its ability to effectively seal the joint. It may also cause the joint to separate, thereby causing damage to your exhaust system and to your vehicle.



NOTE: Align all clamps so that the center of the clamp bolt is 90 degrees from the notch in the pipe.

INSTALLATION INSTRUCTIONS

CORSA EXHAUST



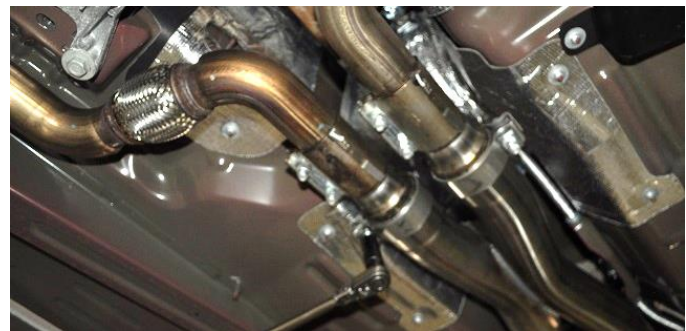
1. Locate the two X-Pipe inlet adapters. Slide the adapters into the factory sleeve clamps, and tighten using the ratchet and 15mm deep socket, until the adapters are snug in the clamps.



2. Install two 3" clamps on the driver and passenger inlets of the Double X-Pipe so that the bolts are vertical with the nut towards the ground and the bolts towards the outside of the vehicle.



3. Slide the X-Pipe inlets over the X-Pipe adapter outlets.
4. Position the X-Pipe so the cross brace located at the rear of the X-Pipe is facing down and parallel with the ground, and the outlets are centered around the differential. Tighten the clamps using a ratchet and 15mm deep socket, until the X-Pipe is snug on the adapters. Place a jack stand or similar device under the X-Pipe for support.



Continued on Next Page . . .

INSTALLATION INSTRUCTIONS

CORSA EXHAUST



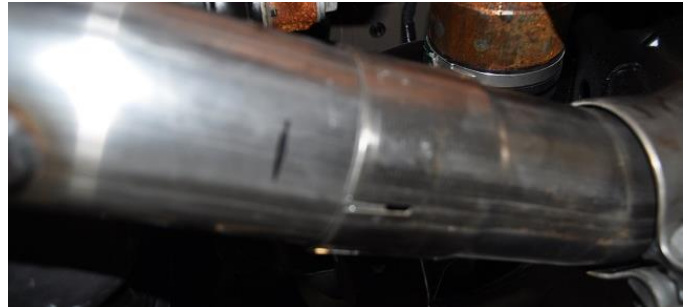
- 5.** Locate the passenger side hanger grommet from **Removal Step 5** and the passenger side muffler. Install the hanger grommet onto the front hanger of the muffler in the same position as previously installed on the stock exhaust. **NOTE:** The use of a soap and water solution may aid in the installation of hanger grommets



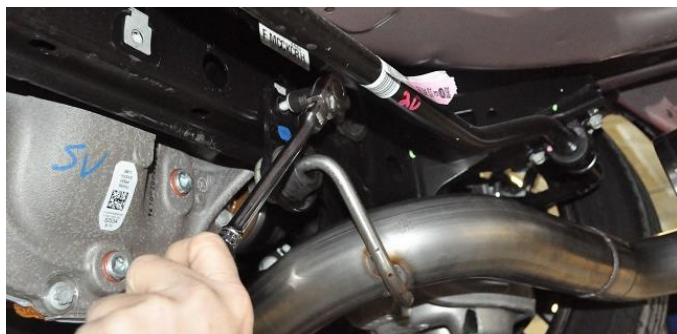
- 6.** Locate one 3" clamp. Install the clamp on the passenger side muffler inlet pipe so that the bolt is vertical with the nut towards the ground and the bolt is towards the inside of the vehicle.



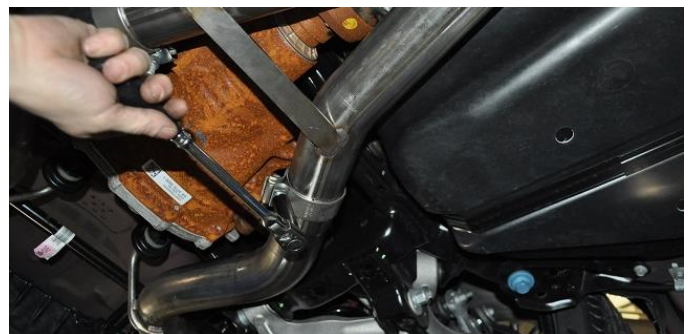
- 7.** Slide the rear hanger into the rear hanger grommet located on the vehicle above and just inside of the passenger side tip cut out.



- 8.** Slide the muffler inlet pipe over the passenger side X-Pipe outlet. **NOTE:** The use of a soap and water solution may aid in the installation of hanger grommets.



- 9.** Locate the 13mm bolt removed during **Removal Step 3** of the stock exhaust removal process. Install the front passenger hanger grommet assembly onto the rear suspension sub-frame and tighten it down with the 13mm bolt, using the 3/8" ratchet and 13mm socket.



- 10.** Tighten the clamp connecting the passenger muffler inlet pipe to the passenger side X-Pipe outlet using a ratchet and 15mm deep socket until muffler assembly is snug on the X-Pipe. **Repeat Install Steps 5-10** on the driver side of the vehicle.

Once the system is secure, it is safe to remove the jack stand from beneath the X-Pipe

Continued on Next Page ...

INSTALLATION INSTRUCTIONS

CORSA EXHAUST



11. Locate the passenger rear tip assembly and one 3" clamp. Install the clamp on the tip inlet pipe so that the bolt is horizontal with the nut towards the inside of the vehicle and the bolt towards the top. Slide the tip assembly over the muffler outlet pipe and tighten the clamp using the ratchet and 15mm deep socket until the tip assembly is snug on the muffler outlet pipe. Repeat for the driver side tip assembly.

NOTE: A premium package equipped 2015-17 with an installed Roush rear valance, or 2018 non-valve Mustang is required to install the quad tip assemblies (Part # 14335 and 14337).



12. Adjust the system accordingly, including the adapter overlap on the stock exhaust, the rear muffler depth and rotation, along with the tip depth and rotation so that the tips are centered in the bumper valance. Rotate the tips so that the CORSA etch is on top with the tip rotation matching the slanted tip cut out of the valance. Check the position of all hangers to make sure they are properly seated within their corresponding grommets. Check clearances between the system components and chassis. At this time, tighten all clamps to 45ft-lbs using the torque wrench and 15mm socket.

NOTE: During cold weather start-ups, you may experience an exhaust sound that is deeper and louder in tone than usual. This is temporary and will diminish to normal levels once your engine has reached its normal operating temperature.

NOTE: Immediately following the installation of your exhaust system, you may experience a trace of smoke after initial start-up. DO NOT be alarmed. The smoke is caused by the burning of a small amount of forming oil residue used in the manufacturing process.

NOTE: It is strongly suggested that all clamps be checked and tightened after road testing the vehicle once the system has cooled.