

14-18 CHEY/GMC
TRUCK & SUV 5.3L

CORSA[®]
PERFORMANCE



IMPORTANT! WARRANTY AND INSTALLATION INSTRUCTIONS

Please Forward All Information to Consumer

Be sure to review the enclosed instructions prior to beginning the installation process. If you have any questions about the enclosed parts or instructions, or if you encounter a problem during installation:

CALL TECHNICAL SUPPORT: 440.891.0999 or 800.486.0999

**TO ACTIVATE YOUR WARRANTY GO TO:
CORSAPERFORMANCE.COM/WARRANTY**

COLOR INSTRUCTIONS ARE AVAILABLE BY PART NUMBER ON: CORSAPERFORMANCE.COM



NEVER work on a hot engine bay.
Allow time for the vehicle to cool.

INSTALL DIFFICULTY



RECOMMENDED TOOLS & SUPPLIES

- Flathead Screwdriver
- Assorted Socket-Set
- Ratchet
- Ratchet Extension

Please take time to read and understand these installation instructions.

CORSA recommends that the installation of this system be performed by a qualified service center or professional installer who has the necessary equipment, tools, and experienced personnel. However, if you decide to perform this installation yourself, the use of an additional person may be required.

WARNING: Never work on a hot engine bay. Allow time for the vehicle to cool.

Check that this air intake complies with your Federal, State, and Local laws. We recommend saving your stock system.

This warranty does not extend to damaged or defect in the finish of a product or to any product, that in the opinion of CORSA Performance, has been misused, damaged by accident or negligence, altered or modified in any way, faulty installation or installed contrary to CORSA installation instructions, or repaired by an unauthorized service facility.

Full warranty available on www.corsaperformance.com

Please confirm that all parts are present according to the bill of materials before beginning the installation.

If something is missing call Tech Support at 440.891.099 or Toll Free: 1.800.486.0999



PREASSEMBLED MATERIALS

PLASTIC AIR BOX		PLASTIC AIR DUCT		CORSA AIR BOX LID	
6mm – 16 Bolts	3	MAF Adapter 6x4 Ribbed	1	Lid Gasket	1
1/4 Lock Washers	3	5/8 NPT Fitting Straight	1	1/4 x 5/8 Rubber Washers	4
1/4 x 5/8 Washers	3			1/4-20x.50' Truss Head Screws	4

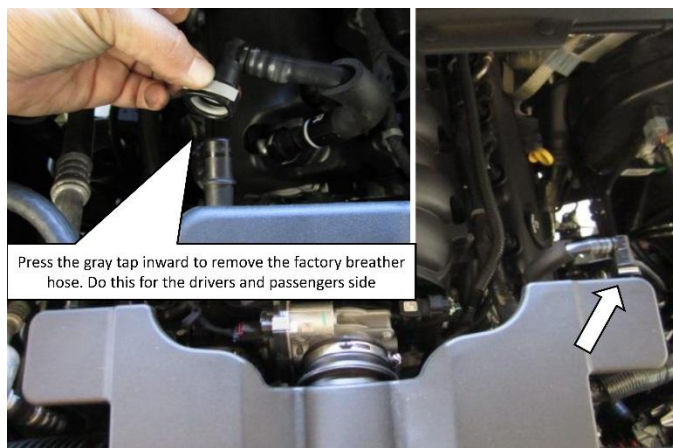
HARDWARE KIT

#64 Clamps	3	Air Filter	1	4.0 x 3.5 Reducer Sleeve	1
#56 Clamp	1	5/8 x 15 Breather Hose	1	5/8 11.5 Breather Hose	1
4mm x 10 Pan Head Screws	2	4.0 Hump Hose	1	MAF Sensor Gasket	1
Clamp Double-Line for 5/8 Line	1				

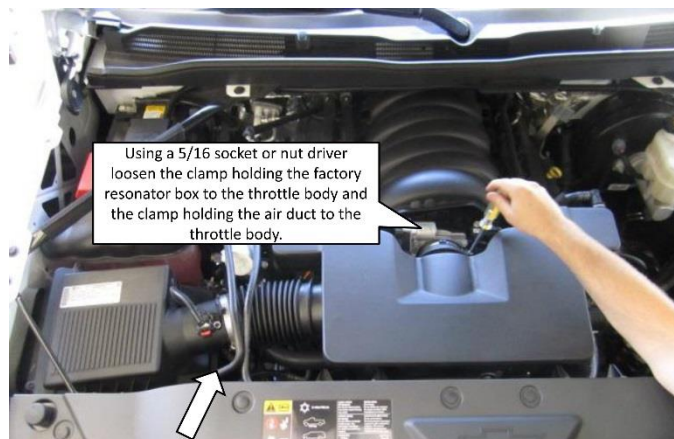
*Locate the vehicle's battery and disconnect the negative battery cable.
This may reset the computer and clear old air flow data to help prevent CEL errors.*

REMOVAL INSTRUCTIONS

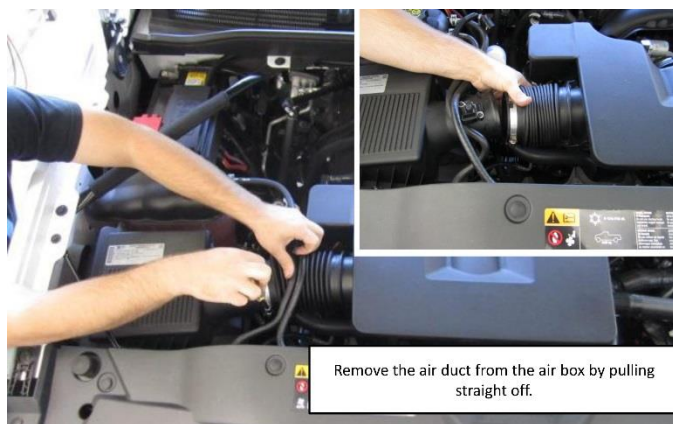
FACTORY INTAKE



1. Press the gray tap inward to remove the factory driver breather hose. Repeat for passenger side.



2. Using a 5/16 socket or nut driver loosen the clamp holding the factory resonator box to the throttle body and the clamp holding the air duct to the throttle body.



3. Remove the air duct from the air box by pulling straight off.



4. Push out the red locking tab from the MAF harness than remove the sensor.

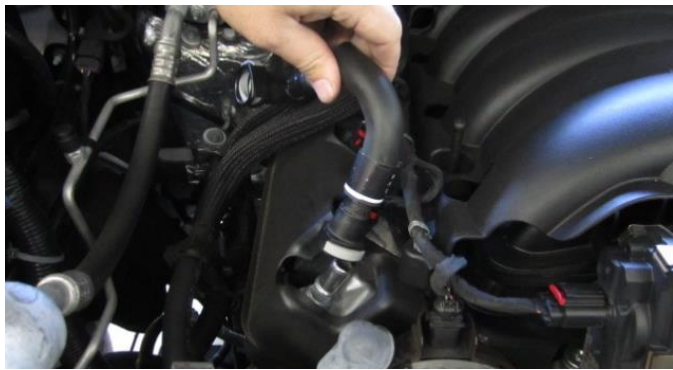


5. Remove the factory resonator box.

Continued on Next Page ...

REMOVAL INSTRUCTIONS

FACTORY INTAKE



- 6.** Remove the factory driver and passenger side breather hose from the engine.



- 7.** Remove the tree rivet holding the MAF harness to the air box.



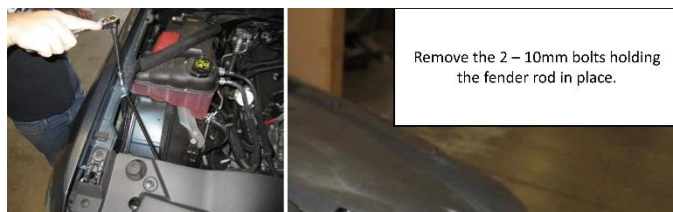
- 8.** Remove the factory air box by pulling up and out.



- 9.** Remove the four 10mm bolts holding the air box mounting plate in place then remove the plate.



- 10.** Remove the four tabs holding the shroud onto the passenger side using a flathead screw driver or pry tool.



- 11.** Remove the 2 - 10mm bolts holding the fender rod in place.

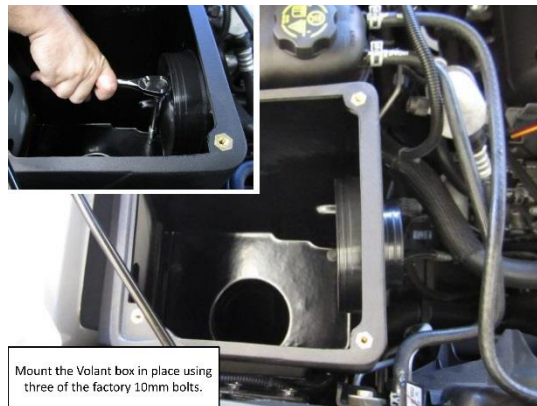
This concludes the removal of the factory intake.

INSTALLATION INSTRUCTIONS

CORSA INTAKE

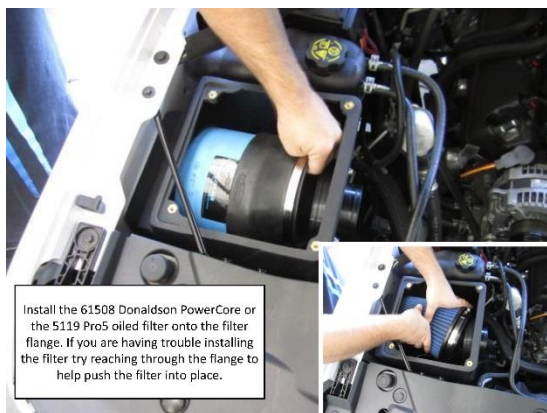


- 1.** Place the CORSA box into the factory location.



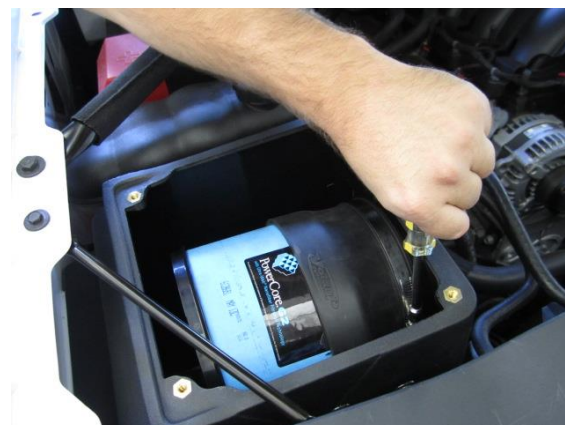
Mount the Volant box in place using three of the factory 10mm bolts.

- 2.** Mount the CORSA box in place using two of the factory 10mm bolts.



Install the 61508 Donaldson PowerCore or the 5119 Pro5 oiled filter onto the filter flange. If you are having trouble installing the filter try reaching through the flange to help push the filter into place.

- 3.** Install air filter, onto the filter flange. If you are having trouble installing the filter try reaching through the flange to help push the filter into place.



- 4.** Tighten the filter into place only using a 5/16 socket or nut driver. Do not use a flathead screwdriver.



- 5.** Attach the hump hose to the filter adapter using 5/16 socket or nut driver.



- 6.** Attach the 4" straight sleeve and #64 clamp using a 5/16 socket or nut driver.

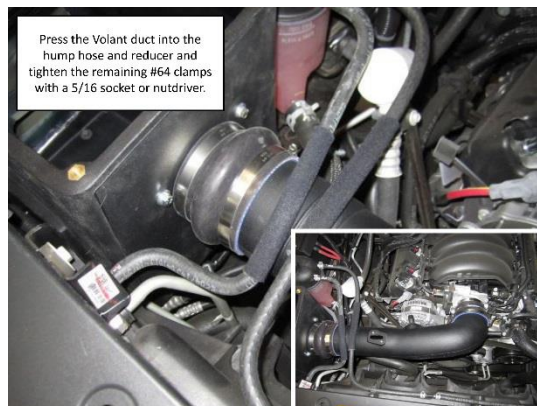
Continued on Next Page ...

INSTALLATION INSTRUCTIONS

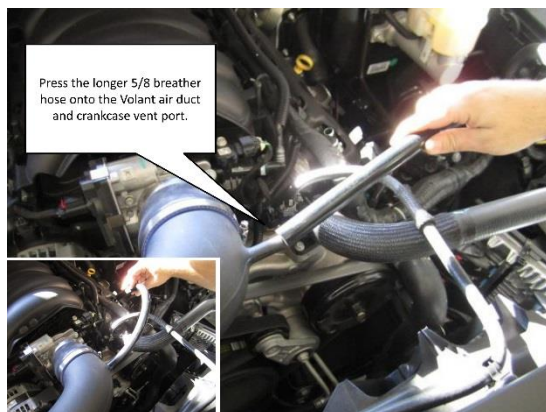
CORSA INTAKE



7. You may now install the lid to the CORSA air box using the supplied truss head screws.



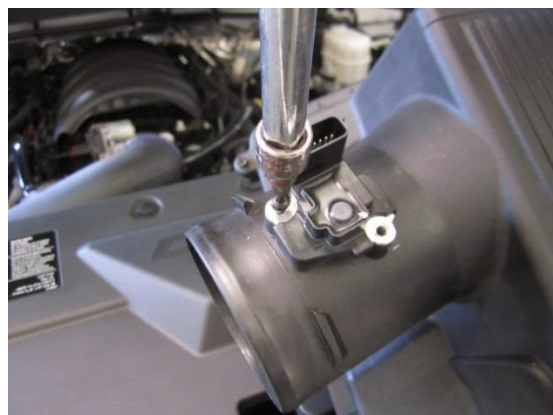
8. Press the CORSA duct into the hump hose and reducer and tighten the remaining #64 clamps with a 5/16 socket or nut driver.



9. Press the longer 5/8 breather hose onto the CORSA air duct and crankcase vent port.



10. Press the shorter 5/8 hose onto the CORSA duct and crankcase vent line.



11. Remove the torx bits holding the MAF into place using the supplied bit.



12. Remove the factory o-ring from the sensor. **USE CAUTION! DO NOT TOUCH MAF SENSOR ELEMENTS. KEEP FREE OF DEBRIS.**

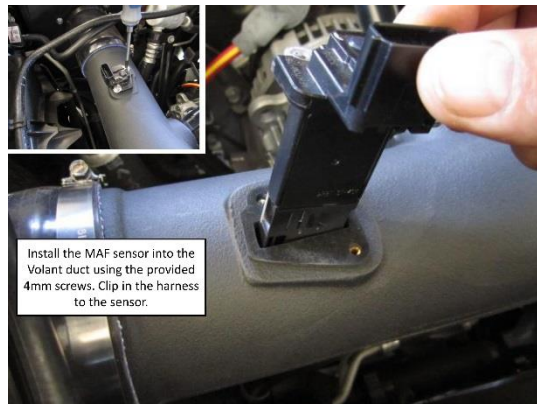
Continued on Next Page ...

INSTALLATION INSTRUCTIONS

CORSA INTAKE



- 13.** Install the supplied CORSA MAF gasket.



- 14.** Install the MAF sensor into the CORSA duct using the provided 4mm screws. Clip in the harness to the sensor.



- 15.** Reinstall the fender support rod using the factory 10mm bolts.



- 16.** Reinstall the shroud support pins.



- 17.** Install the supplied hose support bracket onto the 5/8 lines. This will help prevent contact between the CORSA duct and the rubber lines.



- 18.** Reattach the negative battery cable and check all clamps and hoses before driving the vehicle. Retighten all clamps and hoses at 150, 300, and 1,000 miles.

*Check that this air intake complies with your Federal, State and Local laws.
We recommend saving your stock system.*

BEFORE ROAD TESTING

- 1.** Start engine, leaving the transmission in park and securing the parking brake.
 - 2.** Make sure to look and listen for any unusual noises or air leaks. Repair problems if needed.
 - 3.** Once completed it will be necessary to check periodically, after a few heat cycles, for realignment and tightening of all connections.
-

MAXFLOW 5 CARE AND CLEANING

Check the MaxFlow 5 cotton reusable filter periodically and remove any excessive dirt build-up by tapping the filter on the ground and brushing off the loosened dirt. Clean the filter by using a two stage cleaning kit to thoroughly clean and re-oil the filter. Re-oil every 10,000 miles without cleaning to improve filtering in sand and dirt. Clean only when dirt is very excessive or 50,000 miles.

Reference for Replacement Filters:

MaxFlow 5 Filter Part # 5161

PowerCore[®] Filter Part # 61508

DryTech 3D Filter Part # 5160