



## KJ04505 87-96 YJ Jeep Wrangler 1" Body Lift Installation Instructions

**Before beginning read all instructions and check Bill of Materials**

[www.DaystarWeb.com](http://www.DaystarWeb.com)

Tech Support Contact Info

[Tech@DaystarWeb.com](mailto:Tech@DaystarWeb.com)

Phone: 623.907.0081

Fax: 623.907.0088

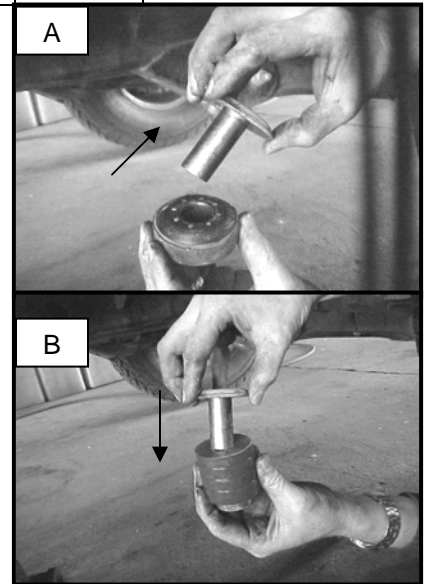
941 South 71<sup>st</sup> Avenue

Phoenix, AZ 85043

Bill Of Material		
S10012	Steel Sleeve	1
M02285	Bushing	1
M02350	Bushing	6
M02351	Bushing	4
M02905	Bushing	1
M02907	Bushing	6
M02908	Bushing	4
M03250	Radiator Support	2

S10125	Washer 1/2"	6
S10385	Washer 7/16"	5
S10192	Bolt 1/2-13X4.5Hex	6
S10350	Bolt 7/16-14X3.5Hex	5
S10354	Transmission Bracket	1
S10281	Steel Tubing	10
S10504	Bolt 1/4-20X3/4Hex	6
S10505	Nut 1/4-20 Hex	6
S10506	Washer 1/4"	6

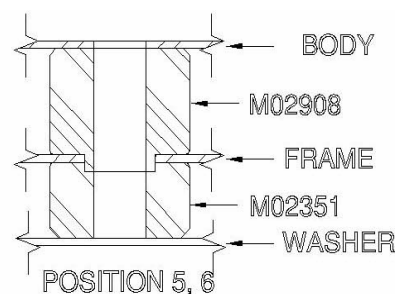
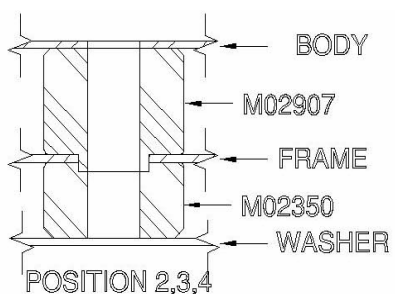
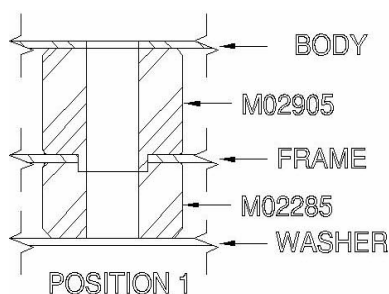
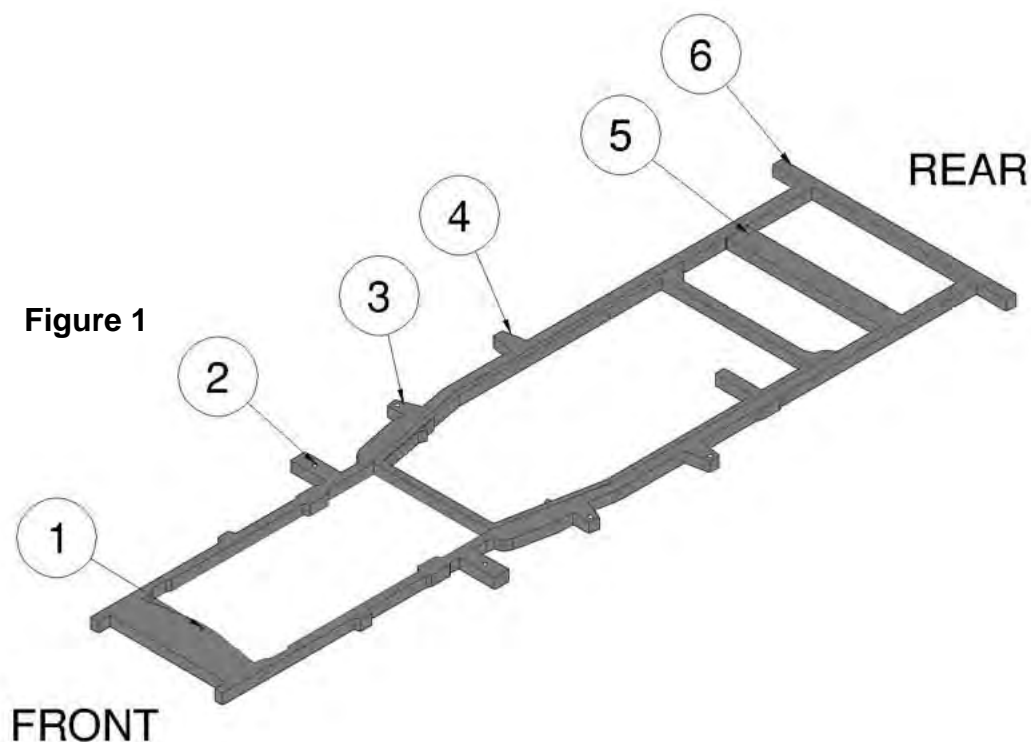
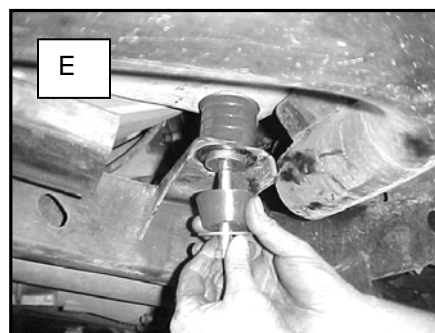
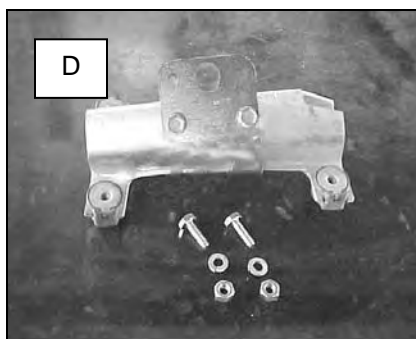
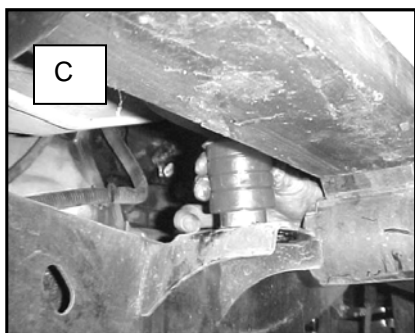
1. **PLASTIC RADIATOR FAN SHROUD:** The fan will hit the lower portion of the fan shroud. Before starting installation, Remove the 4 screws that hold the fan shroud to the radiator allowing the fan shroud to be lowered once body lift is completed. Make sure fan is clear of fan shroud before beginning. See instruction No. 12.
2. Loosen body mount bolts on one side of vehicle and remove bolts from opposite side using a 5/8" socket for positions 1,5 and 6 (ref. Fig.1 on page 2) and a 3/4" socket for positions 2, 3 and 4. Use a long extension to remove mounts next to gas tank. Place 2x4 between jack and body to spread out load and jack up body on the side you have removed the bolts from just far enough to remove mounts. The bolts on the opposite side will help ensure that the body does not shift. **CAUTION:** Open Hood while jacking up the body to make sure that the fan doesn't hit the shroud. Also, watch that hoses and wires are not stretched. The dip-stick head can be pinched so remove dipstick while doing installation. When lifting the side of the vehicle that the fuel filler is on, keep a close eye not to stretch, tear or pull too far on the hose connection.)
3. Remove factory mounts one at a time and remove stock steel insert. View A.
4. Insert stock steel inserts inside top portion of body lift spacer in positions 2-6. (Note:If it fits tight, you may have to use a vise.) See View B.
5. Insert 7/8" OD x 1" long tube (Part No S10281 Included in kit) into lower portion of body lift spacer in positions 2-6 and insert steel sleeve (Part No. S10012 Included in kit) in position #1. (This tube/sleeve is a crush sleeve to eliminate over-torque of polyurethane mounts)
6. Jack up the body using a 2x4 under one side of the body for support just high enough to insert new body lift spacers. If the steel collar on new mounts will not insert in frame holes, you may have to file out frame mount hole slightly to install spacer. Repeat on opposite side. See View C.
7. Install transmission linkage lowering plate to stock transmission linkage bracket with 2 each 1/4" machine bolts, lock washers and nuts (Included in kit). The bracket faces down with large center hole provided for linkage shaft to be inserted. See View D.
8. Lower the body down on the new mounts and replace bolts but do not tighten completely. See View E.
9. Now remove bolts from other side of vehicle and repeat instructions 3 through 6.
10. Once all new mounts are in place, you may re-torque all bolts to factory specs. Do not over tighten bolts.
11. **PLASTIC RADIATOR FAN SHROUD:** Drill holes large enough for new 1/4" bolts 1" lower than original hole in the radiator bracket that shroud bolts to and re-bolt shroud using the 4 new 1/4" bolts, nuts and washers provided in the kit. Make sure fan clears lower portion of fan shroud. It may be necessary to trim fan shroud around lower radiator hose. You may also install Daystar part no. **KJ01005: 1" Lifted Motor Mounts.**
12. Remove the radiator supports on each side and Install the new supports.
13. Before starting engine, check fan for clearance of all lines and wires to make sure they are free and clear.



Instruction Sheet P10432-08

Page 1 of 2

© 2000 Daystar Products International Inc



### WARNING

This vehicle has been modified to enhance its performance. The steering, braking and handling of this vehicle will differ from standard passenger cars and trucks. This vehicle handles differently from an ordinary vehicle in driving conditions which may occur on streets, highways and off road. Avoid unnecessary abrupt maneuvers, sudden stops, sharp turns and other driving conditions that could cause loss of control, possibly leading to a roll over or other accident that could result in serious injury or death to driver and passengers. If larger tires are installed the speedometer will read lower than the vehicles actual speed.

**DRIVE WITH CARE, REDUCE SPEED AND WEAR SEAT BELTS AT ALL TIMES.**

*This kit should be installed by a professional mechanic.*

