



**Detroit Speed, Inc.**  
**Leaf Spring Front Drop Hanger Kit**  
**1973-87 GM Square Body Truck**  
**P/N: 040113**

The Detroit Speed leaf spring front drop hangers are designed to lower the ride height of your 1973-87 GM C10 Square Body truck. They are manufactured from high quality 1/4" thick steel and powder coated black for durability. Detroit Speed has designed this hanger with two leaf spring mounting options that are one inch apart to give you more adjustability in the stance of your truck. All mounting hardware is included in this kit.



Item #	Description	Quantity
1	Leaf Spring Drop Hanger	2
2	7/16"-20 x 1-1/4" Hex Head Bolt	8
3	7/16"-20 Nylock Nut	8
4	7/16" SAE Washer	16
5	Instructions	1

**IMPORTANT:**

All work should be performed by a qualified technician. Please read the entire set of instructions and fully understand all of the steps involved before beginning the project. Always make sure to wear the appropriate safety equipment for

the job and properly support the vehicle. If you have any questions before, during, or after the installation, feel free to contact Detroit Speed by phone at (704) 662-3272 or by email at [tech@detroitsspeed.com](mailto:tech@detroitsspeed.com).

**Installation:**

1. Raise the vehicle on jack stands so that the frame is level with the ground. It is not required to remove the bed from the vehicle however it will make installation easier. Support the rear axle so the rear brake lines are not in tension.
2. Remove the front leaf spring eye bolt from the front leaf spring hanger. Move the leaf spring out of the factory hanger.
3. Remove the front leaf spring bracket from the frame by removing the factory rivets holding the bracket to the frame (Figure 1).



**Figure 1 – Front Leaf Spring Bracket**

4. Drill out the top and bottom four holes in the frame where the factory leaf spring bracket was installed, using a 15/32" drill size (Figure 2).



**Figure 2 - Drill Out Frame Holes**

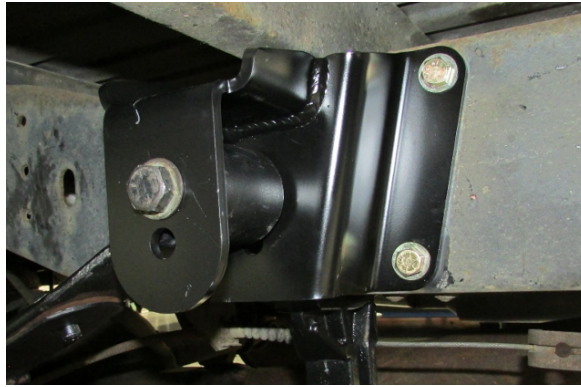
5. Bolt the Detroit Speed drop hanger to the frame in the same location as the factory bracket using the provided 7/16"-20 hardware. Using anti-seize on the threads of the bolts and torque to 50 ft-lbs. (Figure 3).



**Figure 3 - Install Drop Hanger**

6. Locate the leaf spring into the drop hanger in one of the two mounting hole options. Bolt the leaf spring to the drop hanger using the factory hardware (Figure 4). Do not tighten the hardware at this time.

**NOTE:** If you are not using a flip kit, we recommend using the top mounting hole for maximum drop. If you are using a flip kit, we recommend using the bottom mounting hole for less drop.



**Figure 4 – Install Leaf Spring**

7. Repeat Steps 2-6 for the opposite side of the truck.
8. Set the vehicle on the ground. Roll the truck back and forth while jouncing the suspension. At this point, you can now torque the front leaf spring eye bolt to 90 ft.-lbs. Installation is now complete.

If you have any questions before or during the installation of this product please contact Detroit Speed at [tech@detroitsspeed.com](mailto:tech@detroitsspeed.com) or 704.662.3272

**Legal Disclaimer:** *Detroit Speed, Inc. is not liable for personal, property, legal, or financial damages from the use or misuse of any product we sell. The purchaser is solely responsible for the safety and performance of these products. No warranty is expressed or implied.*



**Detroit Speed, Inc.**  
**Leaf Spring Rear Drop Shackle Kit**  
**1973-87 GM Square Body Truck**  
**P/N: 040114**

The Detroit Speed leaf spring rear drop shackles are designed to lower the ride height of your 1973-87 GM C10 Square Body truck. They are manufactured from high quality 1/4" thick steel and powder coated black for durability. Detroit Speed has designed this shackle with two leaf spring mounting options that are one inch apart to give you more adjustability in the stance of your truck.



Item #	Description	Quantity
1	Leaf Spring Drop Hanger	2
2	Instructions	1

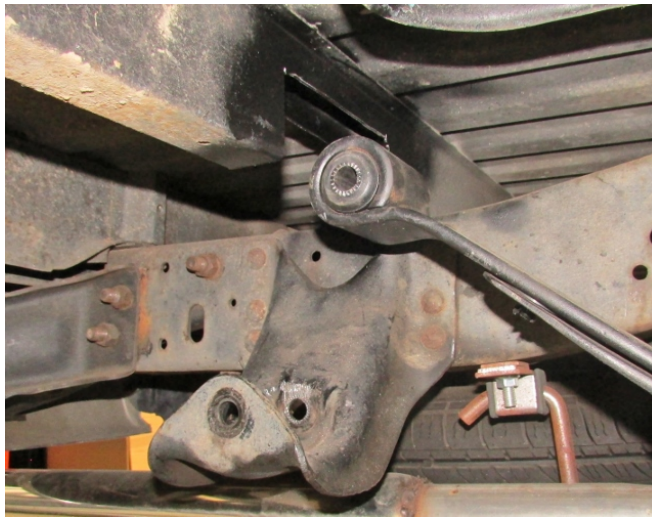
**IMPORTANT:**

All work should be performed by a qualified technician. Please read the entire set of instructions and fully understand all of the steps involved before beginning the project. Always make sure to wear the appropriate safety equipment for the job and properly support the vehicle. If you have any questions before, during, or after the installation, feel free to contact Detroit Speed by phone at (704) 662-3272 or by email at [tech@detroitsspeed.com](mailto:tech@detroitsspeed.com).

**Installation:**



1. Raise the vehicle on jack stands so that the frame is level with the ground. Support the rear axle so the rear brake lines are not in tension.
2. Remove the rear leaf spring eye bolt from the leaf spring shackle. Move the leaf spring out of the factory shackle. Remove the rear leaf spring shackle from the frame bracket.
3. The section of bed rail directly above the rear shackle will need to be notched for the drop shackle. Measure inboard 12" from the outside edge of the bed rail and mark the location. Measure inboard 17-1/2" from the outside edge of the bed rail and mark a 2<sup>nd</sup> location.
4. Measure up 2" from the bottom edge of the bed rail between the two marked locations from the previous step. Draw two vertical and one horizontal lines connecting these marked locations. This will be the area that will need to be cut out of the bed rail for the drop shackle.
5. Use a cut off wheel and a grinder to remove this section of bed rail. We recommend all bare metal be painted (Figure 1).



**Figure 1 - Notch Bed Rail**

6. Install the Detroit Speed drop shackle into the frame bracket using the original hardware (Figure 2). Make sure the shackle can swing back and forth without contacting the bed rail while having clearance for the hardware. Do not tighten the hardware at this time.



**Figure 2 – Install Drop Shackle**

7. Locate the leaf spring into the drop shackle in one of the two mounting hole options. Bolt the leaf spring to the drop shackle using the factory hardware (Figure 3). Do not tighten the hardware at this time.

**NOTE:** If you are not using a flip kit, we recommend using the top mounting hole for maximum drop. If you are using a flip kit, we recommend using the bottom mounting hole for less drop.



**Figure 3 – Install Leaf Spring**

8. Repeat Steps 2-7 for the opposite side of the truck.

9. Set the vehicle on the ground. Roll the truck back and forth while jouncing the suspension. At this point, you can now torque the rear leaf spring eye bolt to 90 ft.-lbs. Installation is now complete.

If you have any questions before or during the installation of this product please contact Detroit Speed at [tech@detroitsspeed.com](mailto:tech@detroitsspeed.com) or 704.662.3272

**Legal Disclaimer:** *Detroit Speed, Inc. is not liable for personal, property, legal, or financial damages from the use or misuse of any product we sell. The purchaser is solely responsible for the safety and performance of these products. No warranty is expressed or implied.*