



INSTALLATION INSTRUCTIONS

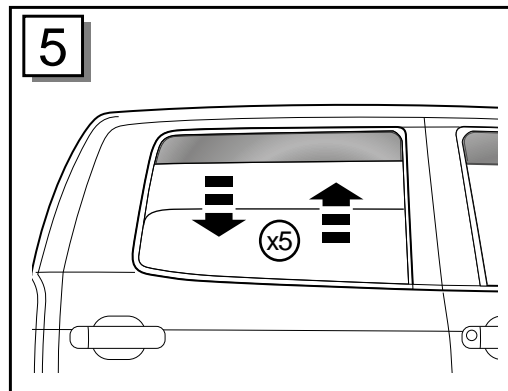
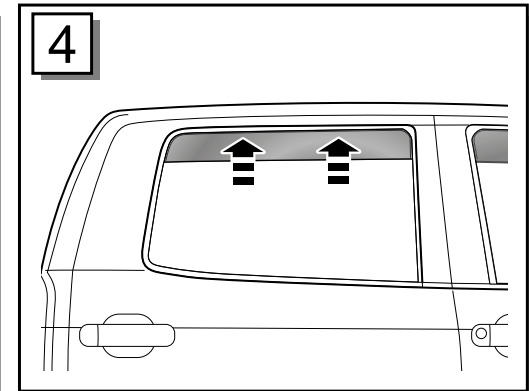
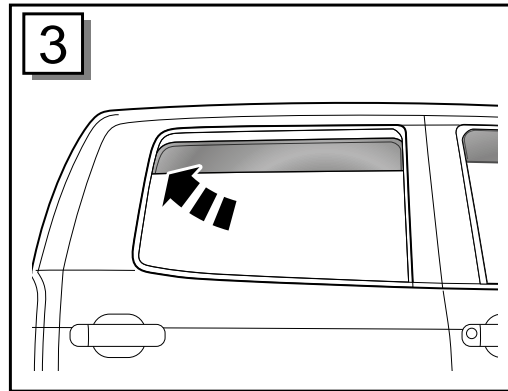
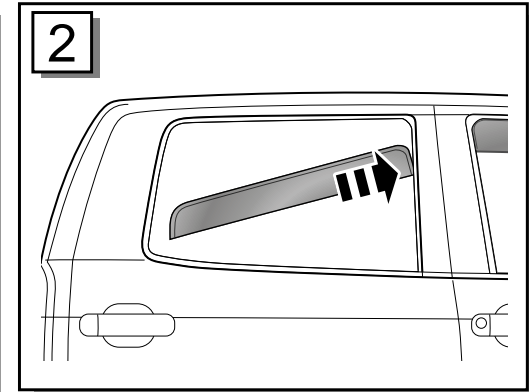
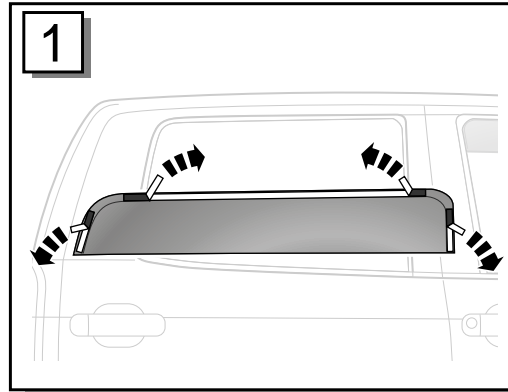
™

**IN-CHANNEL
SLIMLINE
WINDOW VISOR**



INSTALLATION INSTRUCTIONS

- 1• Clean and dry the vehicle. Lower the rear windows completely. Remove tape liner from the double-sided tape mounted on the Window Visor.
- 2• Fit the front section of the Window Visor into the rubber window channel, as shown.
- 3• Position the rear section of the Window Visor into the rubber window channel.
- 4• Work the Window Visor into the rubber window channel by hand, ensuring it locates securely.
- 5• Finally, raise and lower the window at least 5 times to help seat the Window visor into the rubber window channel.



IMPORTANT: Before fitting product, read instruction fully. Full tape strength is achieved after 72hrs. Allow tape to cure for 4hrs before driving vehicle. Reverse the above procedure to remove this product.

TO CLEAN: Use mild detergent and water solution. (Do NOT use solvents). Avoid the use of automatic "Brush Style" car washes.