

Installation instructions

For set # 8.3117

97-01 CAMRY / 95-99 AVALON

00-03 AVALON / 99-03 SOLARA



1131 VIA CALLEJON, SAN CLEMENTE, CA 92673

© 2003 Energy Suspension. All rights reserved.
May not be reproduced, in any form, or by any means,
without the written consent of Energy Suspension.

It is recommended that if you are unfamiliar with this type of work that you refer to a qualified service center specializing in this type of work. It is also recommended that if you choose to do this work yourself that a factory service manual be obtained for the proper procedures pertaining to removal, replacement and proper torque specifications for your vehicle. This instruction set is intended as a guideline for the safe installation of Energy Suspension's polyurethane bushings, once you have removed the factory components from your vehicle.



1

Use arbor press to remove rubber and pin



2

Remove all old rubber from pin



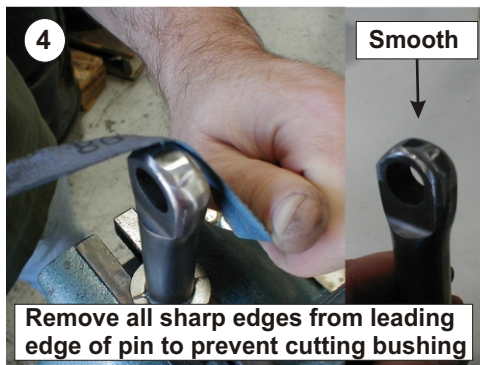
5

Apply grease to all metal parts that contact the polyurethane bushings. Press in bushing 3335 first, then press the pin in. Don't let the pin push the bushing through other side.



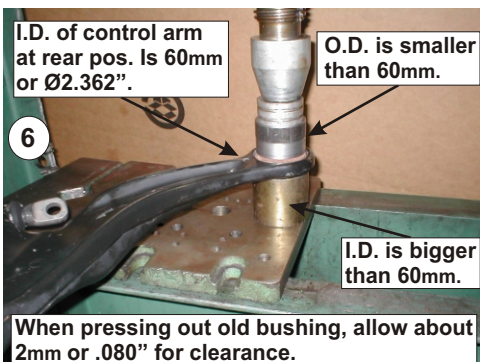
3

Remove all sharp edges that will come in contact with the polyurethane.



4

Remove all sharp edges from leading edge of pin to prevent cutting bushing



6

When pressing out old bushing, allow about 2mm or .080" for clearance.



7

Remove all sharp edges.



8

Press in bushing 3336 then press in the sleeve.

Energy Suspension recommends that you read over all the installation instructions and check all P/N's and quantities in the parts list before you start. Call customer service at 949-361-3935 if the parts in your kit do not match this parts list.

Parts list for set: 8.3117

- 2 - 3335 front position (reuse factory pin).
- 2 - 3336 rear position (must remove outer metal shell).
- 2 - 15.10.167.39 sleeve (.875" x .563" x 1.960").
- 3 - 9.11108 grease.
- 1 - 17397 this instruction sheet.

17397

28/AUG/03 BRH