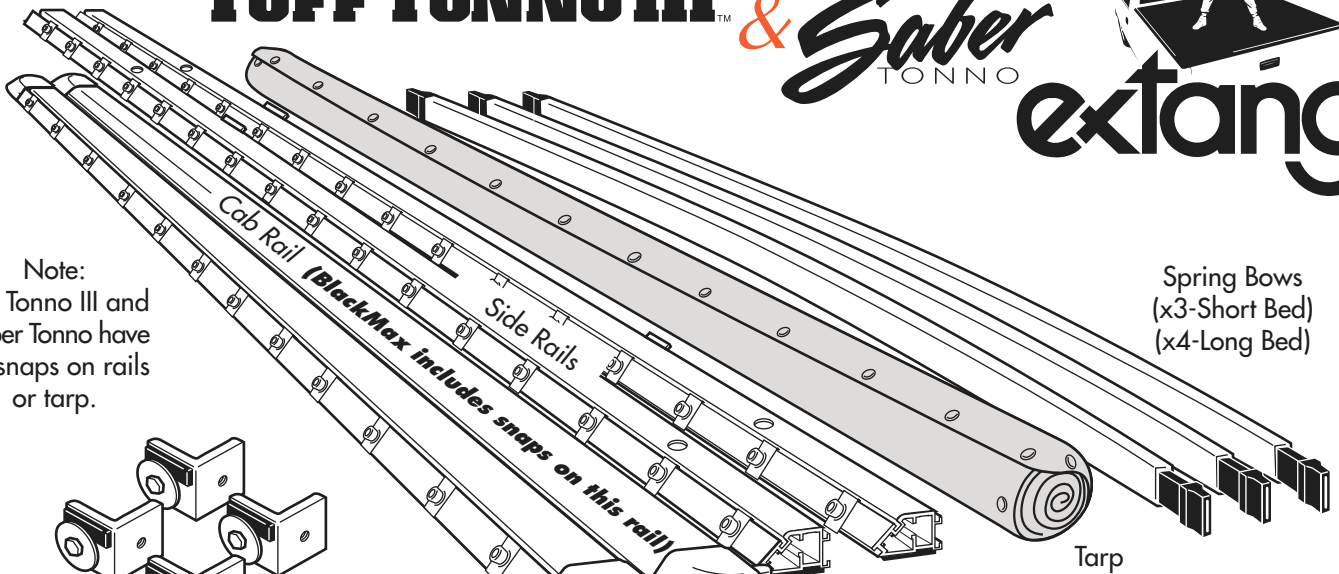
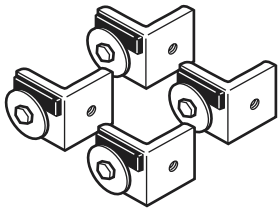


# INSTALLATION SHEET-GM/Chevy Composite Box

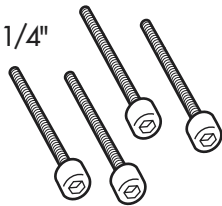
CLASSIC  
**PLATINUM, BLACKMAX,  
 TUFF TONNO III & Saber**



Note:  
 Tuff Tonno III and  
 Saber Tonno have  
 no snaps on rails  
 or tarp.



"L" Brackets and 2 1/4"  
 long Screws  
 (4 sets)



Corner Pieces

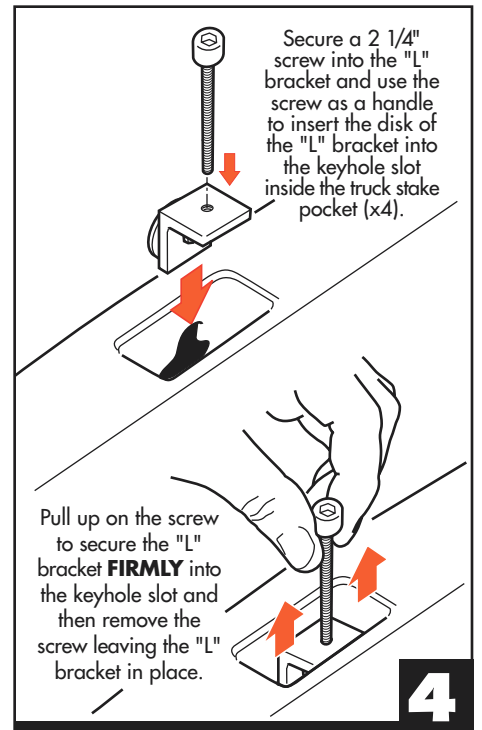
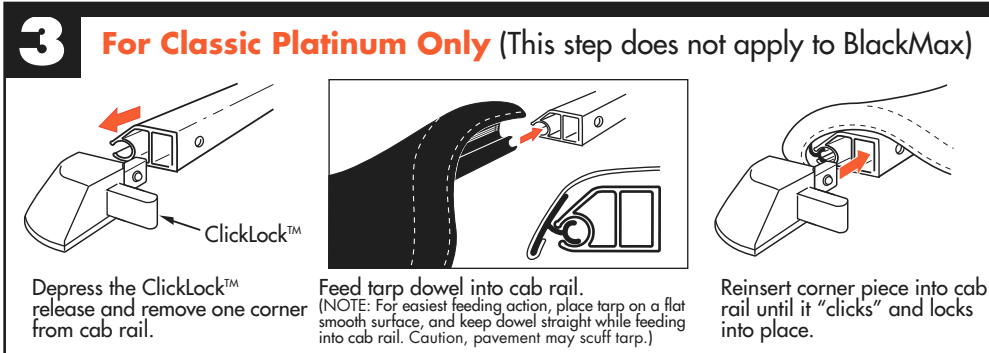
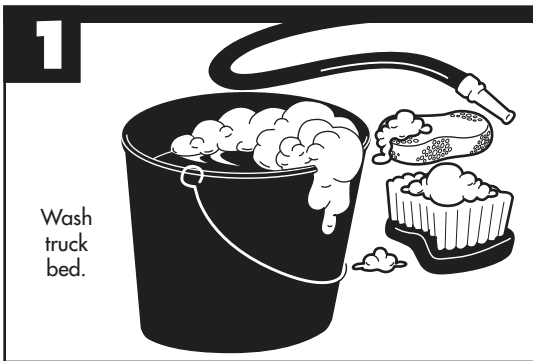
Allen Wrench

**MISSING PARTS???**  
 call Extang at **1-800-877-2588**

Any and all needed parts will be shipped to you  
 directly. (DO NOT return whole kit to store)

**NOTE:**  
**BLACKMAX has snaps on all rails.**

PARTS INCLUDED IN YOUR KIT. You may want to lay them out in this manner for accessibility.



**5** Insert two 2 1/4" screws into the holes of a side rail.

Line up the screws with holes in the "L" brackets in place. Carefully twist screws into brackets and lightly tighten. Do both side rails before proceeding to Step 6.

**6** Insert the cab rail into the front of the two side rails and the tail rails into the back of both side rails.

**7**

Tighten each screw until rail is secure. **DO NOT OVER TIGHTEN! THIS WILL DAMAGE THE SIDE RAIL.**

**8** Insert bow onto top or bottom peg, (Top peg for performance, Bottom for good looks.)

Upper Peg or Lower Peg

Ends are spring loaded for easy installation. Push and hold on spring end and let the other end slide on with the spring action.

SPECIAL FEATURE: Two pegs offer two height adjustments. Note: Bow End does not fit between pegs.

Do Not Place Between the Pegs

**9** For Classic Platinum and BlackMax

Attach tarp by starting at the corners, and snap in place.

**Start at Corners**

**SPECIAL FEATURE Weather-adjustable Snaps**

Studs Down Slides Off Rotate 180° Studs Up

**SUMMER SETTING** Takes up slack in tarp caused by warm weather.

**WINTER SETTING** Allows more slack in tarp for cold temperatures.

A. Release lever on both corners of tailgate rail and tilt up rail.

B. Attach tarp at front by pressing down on edge of tarp with the palms of your hands (about only 12 inches on each side). Then hook tarp to the tails rail's groove and click down to tighten tarp. See close-up.

C. Finish attaching tarp along each side by pushing down and sliding your hand towards each corner. You can feel the "grip" action.

Close-up of downward rotation of rear rail. You will feel the "snap" effect and see it tighten snugly.

PUSH DOWN PRESS & SLIDE YOUR HAND

**For Tuff Tonno III:**

**For Saber Tonno:**

A. Attach tarp from front corner (12 inches) Repeat for each side. **Note: Pull tarp out while pressing down in center of the side strip to flex hook open for easy attachment.**

B. Secure tarp at the middle of tailgate rail.

C. Finish attaching tarp along each side by pushing down and sliding your hand front to rear, and on tailgate rail, by pressing out from the center.

**EASY USE OF TRUCK BED**

Tarp may be rolled up and secured with Velcro® for bulk hauling