

FuelTech



FUELTECH USA
475 Wilbanks Dr
Zip Code 30107
Ball Ground - GA
Phone: +1 855 595 FUEL (+1 855 595 3835)
E-mail: info@fueltech.net
<http://www.fueltech.net>

USB CAN

FuelTech CAN Updater Software Install Guide

Insert the FuelTech CD in CD-ROM drive. Go to “My Computer” and access the “CAN Updater” folder on the CD.

- **Windows XP:** double click on “SetupCanUpdater_x.xx_webinstall.exe”.
- **Windows 7 or Vista:** right click on “SetupCanUpdater_x.xx_webinstall.exe” and select “Run as Administrator”.

- Select the software language;



Follow on screen instructions to install .NET Framework (in case a message is shown). Otherwise, just wait for the installation to finish. When the installation is successfully an FuelTech CAN Updater icon will be created at the Desktop. Double click it to start the CAN Updater software.

Connecting the USB-CAN Converter on the Computer

Only connect the USB-CAN Converter after the installation of the software, following the steps above.

Use the **rear** USB ports of your computer, because front USB ports are more susceptible to assembly errors or defects due to frequently use.

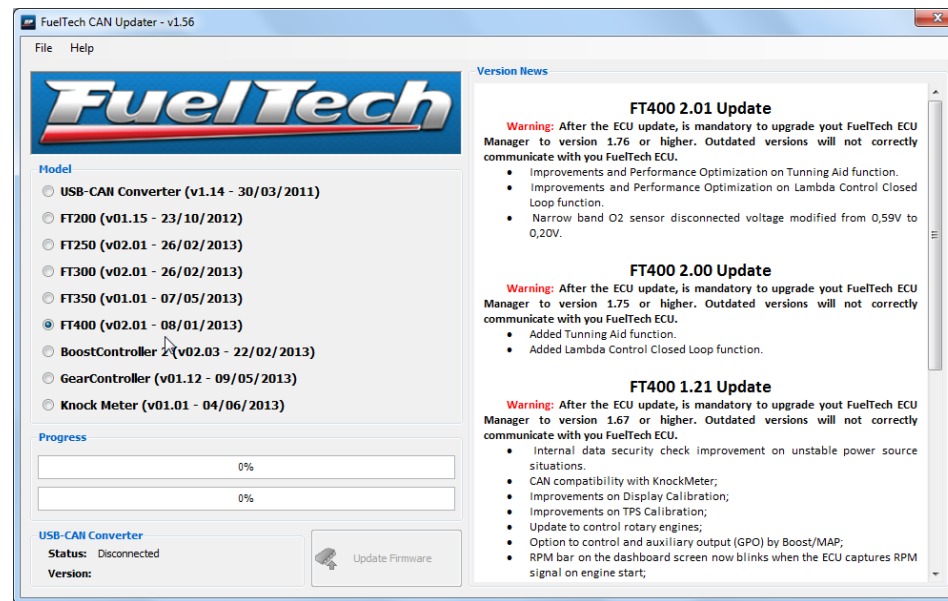
On notebooks, use **only** USB ports where the USB-CAN Converter **fit firmly**, a bad contact during the update process could corrupt data on the FT module. **This repair could only be done at the factory.**

Updating a FT on FuelTech CAN Updater

1 – Connect the FT module on the USB-CAN Converter.

2 – Select the correct FT **model** wich you want to update and the desired language

3 – Click “Update *Firmware*” button and wait for the updating process to finish. Avoid moving the module and pressing its buttons during the update process.



Error during Update

In case of any error during the update process due to a bad contact, power loss or any other problem, disconnect the USB-CAN Converter from the computer and from the FT module. Close the CAN Updater software and then open it again, reconnect the USB-CAN Converter and the FT module. Try to update again. In case the error persists, the software will automatically generate a log file located on C:\Program Files\FuelTech\FuelTech CAN Updater\Log_UpdaterCan.txt.

Contact FuelTech Support via the contacts at the end of this manual with this log file.