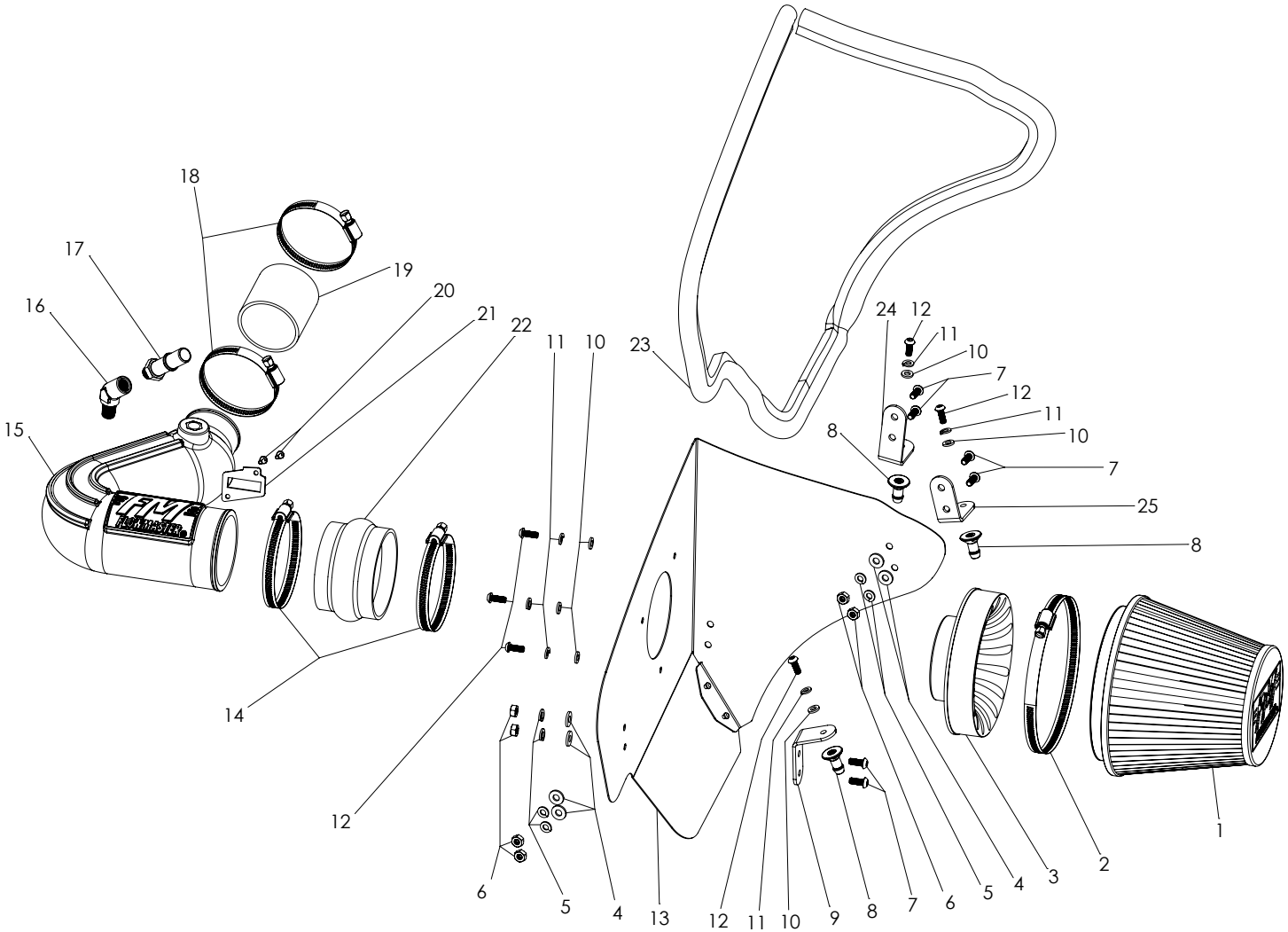




Installation Instructions for: SYSTEM #615143

2016-2017 CAMARO
with Turbocharged 2.0L Engine

NOT LEGAL FOR SALE OR USE ON ANY POLLUTION-CONTROLLED MOTOR VEHICLE IN CALIFORNIA OR IN STATES THAT HAVE ADOPTED CALIFORNIA EMISSION PROCEDURES.



07/31/17

ITEM NO.	PART NUMBER	DESCRIPTION	QTY.
1	AF1003	FILTER, AIR 6-5/8" HIGH x 6" DIA	1
2	AF6001	HOSE CLAMP, #104 (4-1/8" - 7")	1
3	AF6001	ADAPTER, AIR FILTER, 3-1/2" x 6"	1
4	HW320	FLAT WASHER, 1/4"	6
5	HW322	LOCK WASHER, 1/4"	6
6	HW115	NUT, 1/4"-20	6
7	HW245	SCREW, 1/4"-20 x 5/8"	6
8	AF7001	BARBED PIN, M6 x 1.0	3
9	AF5011	BRACKET 1, 16-17, CAMARO, 2.0L TURBO	1
10	HW319	FLAT WASHER, M6	6
11	HW318	LOCK WASHER, M6	6
12	HW244	SCREW, M6 x 1.0 x 16MM	6
13	AF3016	HEAT SHIELD, 16-17, CAMARO, 2.0L TURBO	1

ITEM NO.	PART NUMBER	DESCRIPTION	QTY.
14	MC350H	HOSE CLAMP, #56 (3-1/16" - 4")	2
15	AF2016	INTAKE TUBE, 16-17 CAMARO, 2.0L TURBO	1
16	AF4037	ELBOW, 1/4" NPT MALE TO 1/4" NPT FEMALE, 45°	1
17	AF4016	UNION, 5/8" QUICK CONNECT TO 1/4" NPT MALE	1
18	MC250H	HOSE CLAMP, #44 (2-1/4" - 3-1/4")	2
19	AF4035	COUPLER, STRAIGHT, 2-3/8" I.D. x 2-1/2" L	1
20	HW248	SCREW, M4 x 0.7 x 12MM	2
21	GA139	GASKET, MAF SENSOR	1
22	AF4054	COUPLER, FLEX, 3-3/8" - 3-1/2" I.D. x 2-1/2" L	1
23	49000061	GASKET, HEAT SHIELD - 66"	1
24	AF5013	BRACKET 3, 16-17, CAMARO, 2.0L TURBO	1
25	AF5012	BRACKET 2, 16-17, CAMARO, 2.0L TURBO	1

REVIEW THE INSTRUCTIONS AND VERIFY THE KIT CONTENTS:

1. Please take a moment to read and understand these instructions before installing your Flowmaster cold air intake kit.



2. Use the parts drawing and list (front page) to verify your kit's contents.

In the unlikely event that any parts are missing, please contact FLOWMASTER Technical Support for replacements.

To simplify assembly and avoid cross-threading fasteners, identify and separate the ¼-20 screws (item 7) (used with nuts (6)), and the M6 screws (12) (used with filter adapter (3) and barbed pins (8)).

REMOVE FACTORY AIR INTAKE SYSTEM:

NOTES

- We highly recommend that you retain all factory air intake system parts.
 - Please refer to vehicle manufacturer's recommendations regarding removal of factory components.
 - Disconnecting the negative battery cable erases pre-programmed electronic memories. Write down all memory settings before disconnecting the negative battery cable. Some radios will require an anti-theft code to be entered after the battery is reconnected. The anti-theft code is typically supplied with your owner's manual. In the event your vehicle's anti-theft code cannot be recovered, contact an authorized dealership to obtain your vehicle's anti-theft code.
3. **Turn off the vehicle's ignition and disconnect the negative battery cable.**

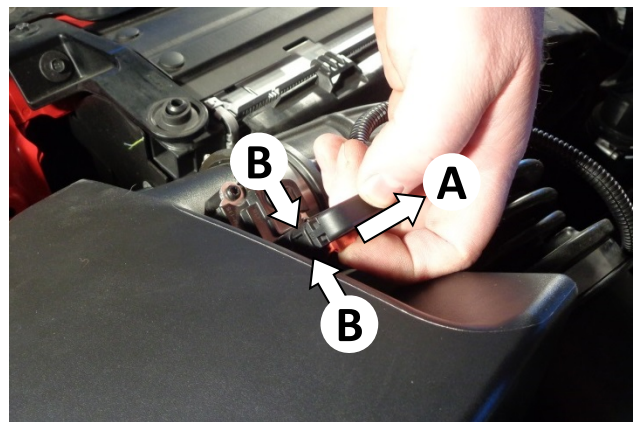
4. **Disconnect the PCV tube from the intake duct:**



- A. Earlier PCV tubes: Release the latch as shown, then remove the connector.



- B. Later PCV tubes: A special tool is required to disconnect the tube. **See your authorized dealership** either to obtain the tool, or to have the tube disconnected. **NOTE: Attempting to disconnect the tube without the required tool may damage the connector!**



5. Disconnect the mass airflow (MAF) sensor plug by (A) pulling the locking tab away from the sensor until it stops, then (B) squeezing the sides of the plug and pulling it straight off the sensor.



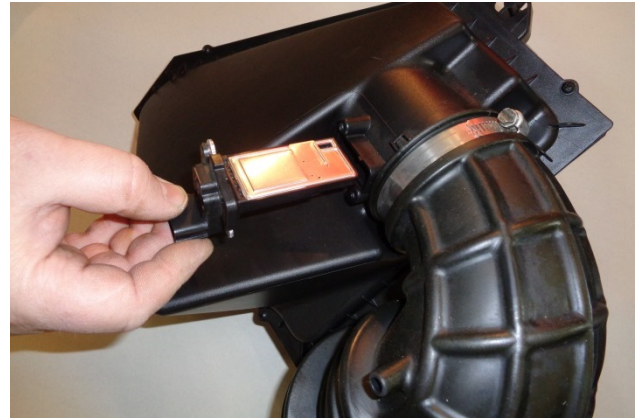
6. Release the MAF sensor lead clamp from the intake duct.



7. Loosen the hose clamp securing the intake duct to the turbine inlet.

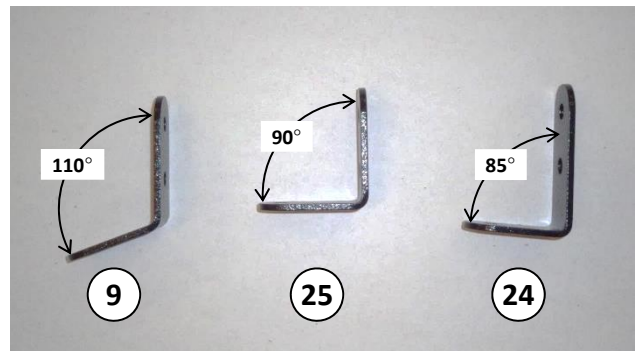


8. Grasp each corner of the airbox, one at a time, and firmly pull straight up to release each mount pin from its rubber grommet. After releasing all three pins, remove the assembled airbox and duct from the vehicle.



9. Remove the MAF sensor from the airbox, then remove the stock gasket from the sensor.
CAUTION: The sensor is delicate! Handle it with care, and store it in a safe location until reinstallation.

ASSEMBLE AND INSTALL YOUR FLOWMASTER COLD AIR INTAKE SYSTEM:



10. Identify heat shield brackets (9), (25) and (24) by their bend angles, as shown above.



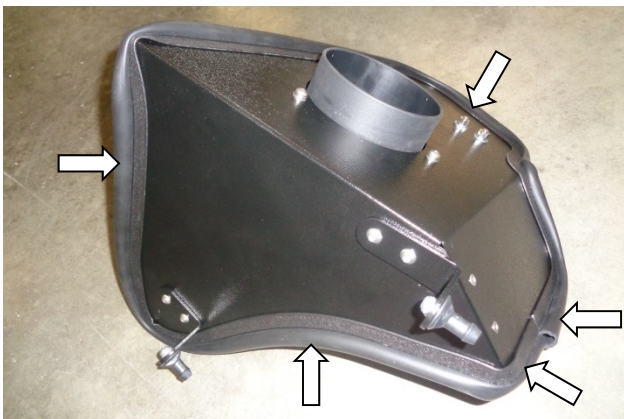
11. Attach brackets to heat shield (13) at the locations shown, using ¼-20 screws (7) (on the bracket side), and flat washers (4), lock washers (5) and nuts (6) (on the heat shield side). **NOTE: Orient tab on bracket (9) upward.**



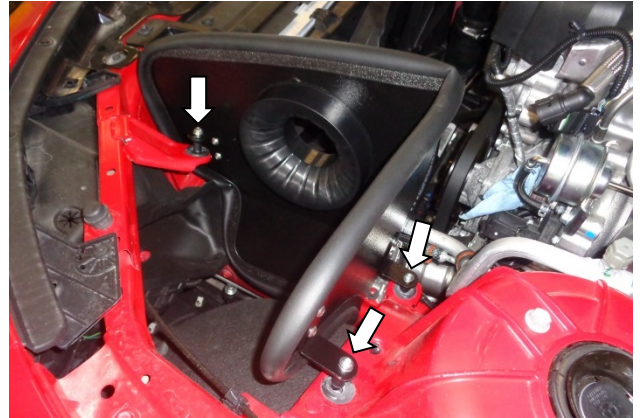
12. At each bracket, install barbed pin (8), using M6 screw (12), lock washer (11) and flat washer (10).



13. Attach air filter adapter (3) to heat shield using M6 screws (12), lock washers (11) and flat washers (10).



14. Attach gasket (23) to heat shield. Starting at center of bottom edge of heat shield, press the gasket fully onto the edge, working around the heat shield. When you return to the starting point, trim the gasket to fit using metal-cutting shears.



15. Install the assembled heat shield in the vehicle by aligning the 3 barbed pins with their rubber grommets. Push each pin into its grommet, one at a time. (Moistening the grommets with soapy water will ease insertion.)



16. Apply 2 wraps of nylon thread tape to threads of elbow (16), and install elbow in intake tube (15).



17. Apply 2 wraps of nylon thread tape to threads of 5/8" quick disconnect union (17), and install union in elbow.



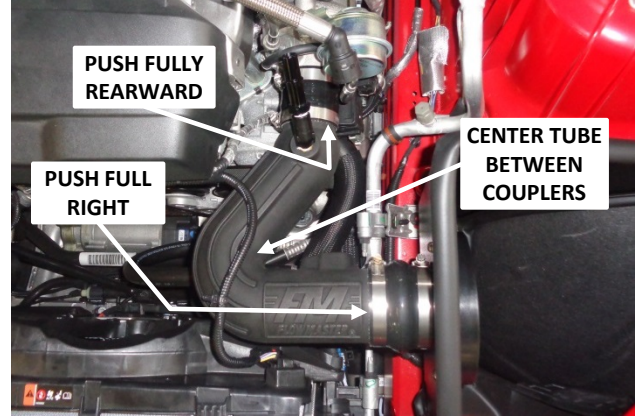
18. Place the MAF sensor gasket (21) over the sensor, ensuring correct orientation. Then install the sensor in the intake tube, using M4 screws (20).



19. Install 2 larger hose clamps (14) on flexible coupler (22), then install coupler on filter end of intake tube.



20. Install 2 smaller hose clamps (18) on straight coupler (19), then install coupler on throttle-body end of intake tube.



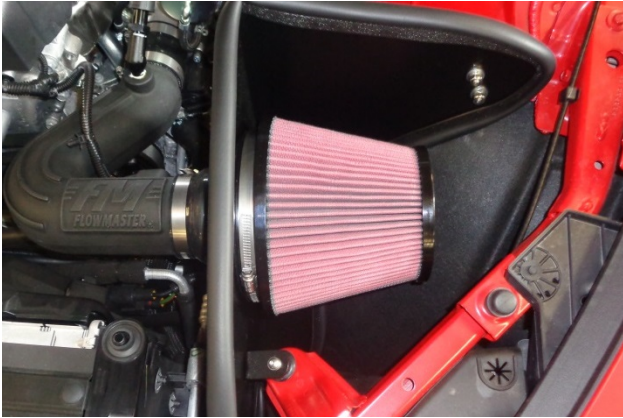
21. Install the intake tube in the vehicle. Push the straight coupler up against the raised stops on the throttle body. Push the flex coupler up against the heat shield. Then center the intake tube between the couplers, and tighten all hose clamps.



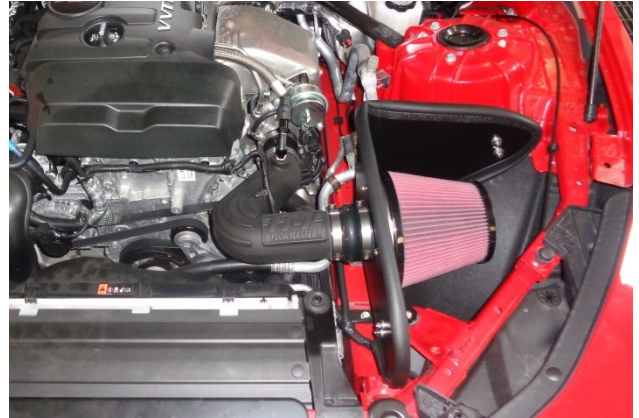
22. Reinstall the connector on the MAF sensor, close the locking tab, and verify that the connector is secure.



23. Connect the PCV line to the quick disconnect fitting and check for security.



24. Install clamp (2) on air filter (1), install filter on filter adapter and tighten clamp.



Congratulations, the installation of your FLOWMASTER cold air intake kit is now complete!