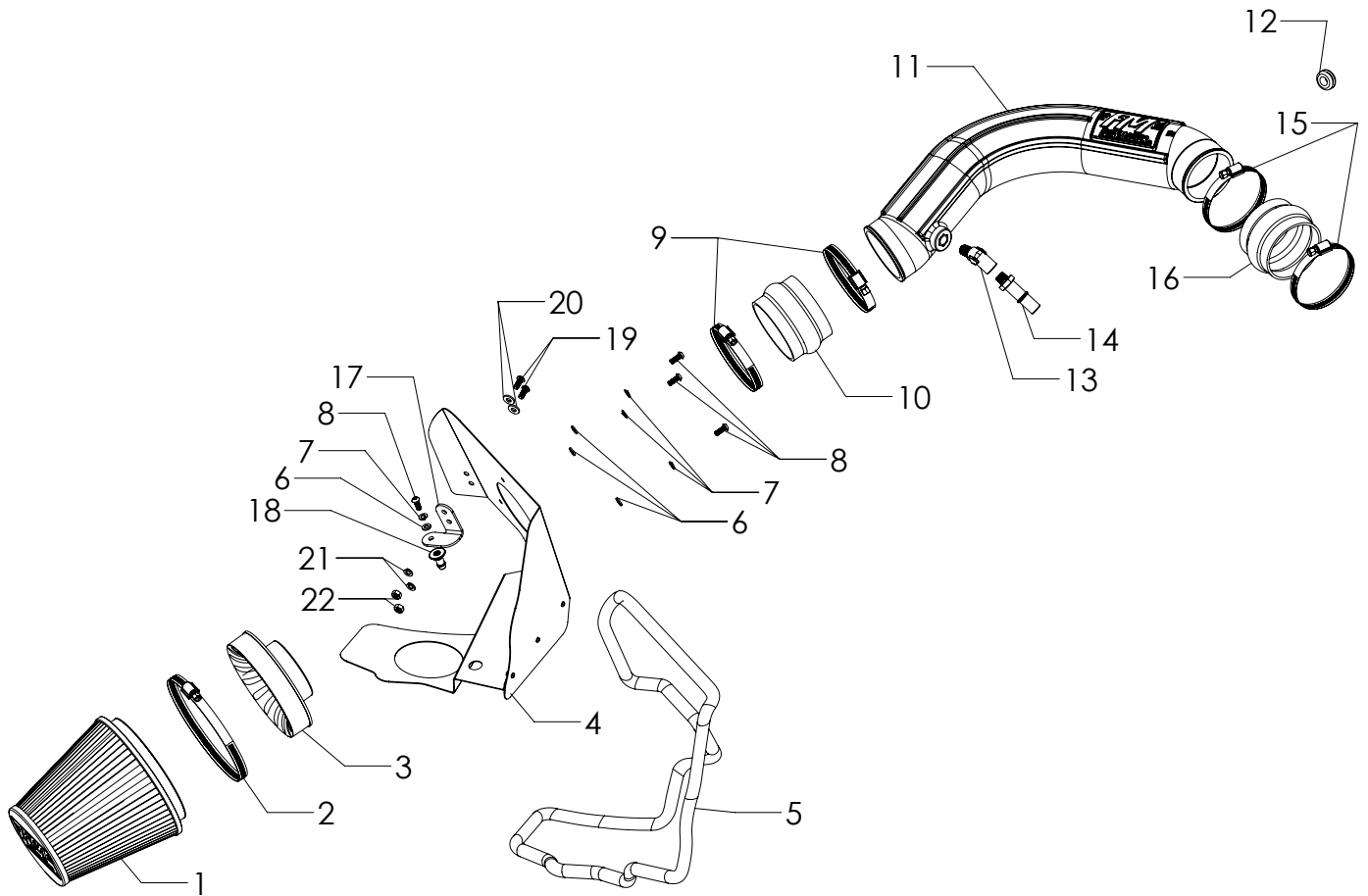




Installation Instructions for: SYSTEM #615156 2014-2017 JEEP CHEROKEE with 3.2L Engine

NOT LEGAL FOR SALE OR USE ON ANY POLLUTION-CONTROLLED MOTOR VEHICLE IN CALIFORNIA OR IN STATES THAT HAVE ADOPTED CALIFORNIA EMISSION PROCEDURES.



REV. 10/4/17

ITEM NO.	PART NUMBER	DESCRIPTION	QTY.
1	AF1002	AIR FILTER 7-1/2" x 6" DIA	1
2		SCREW CLAMP, #104 (4-1/8" - 7")	1
3	AF6001	ADAPTER, AIR FILTER 3-1/2" x 6"	1
4	AF3038	HEAT SHIELD, 14-17, CHEROKEE, 3.2L	1
5	49000061	GASKET, HEAT SHIELD	84"
6	HW319	FLAT WASHER, M6	4
7	HW318	LOCK WASHER, M6	4
8	HW244	SCREW, M6 x 1.0 x 16MM	4
9	MC350H	SCREW CLAMP, #56 (3-1/16" - 4")	2
10	AF4019	COUPLER, FLEX 3-1/2" I.D. x 2-1/2" L	1
11	AF2038	INTAKE TUBE, 14-17, CHEROKEE, 3.2L	1

ITEM NO.	PART NUMBER	DESCRIPTION	QTY.
12	AF4008	GROMMET, 1-1/16" OD x 1/2" ID x 3/16" THK	1
13	AF4037	ELBOW, 1/4" NPT MALE TO 1/4" NPT FEMALE, 45°	1
14	AF4016	5/8" QUICK CONNECT TO 1/4" NPT MALE	1
15	MC314H	SCREW CLAMP, #52 (2-13/16" - 3-3/4")	2
16	AF4049	COUPLER, FLEX 3-1/4" I.D. x 2-1/2" L	1
17	AF5040	BRACKET 1, 14-17, CHEROKEE, 3.2L	1
18	AF7001	BARBED PIN, M6 x 1.0	1
19	HW245	SCREW, 1/4"-20 x 5/8"	2
20	HW320	FLAT WASHER, 1/4"	2
21	HW322	LOCK WASHER, 1/4"	2
22	HW115	NUT, 1/4"-20	2

REVIEW THE INSTRUCTIONS AND VERIFY THE KIT CONTENTS:

1. Please take a moment to read and understand these instructions before installing your Flowmaster cold air intake kit.



2. Use the parts drawing and list (front page) to verify your kit's contents.

In the unlikely event that any parts are missing, please contact Flowmaster Technical Support for replacements.

To simplify assembly and avoid cross-threading fasteners, identify and separate the 1/4-20 screws, (item 19) (used with nuts (22)), and the M6 screws (8) (used with filter adapter (3) and barbed pin (18)).

REMOVE THE FACTORY AIR INTAKE SYSTEM:

NOTES

- We highly recommend that you retain all factory air intake system parts.
- Please refer to vehicle manufacturer's recommendations regarding removal of factory components.
- Disconnecting the negative battery cable erases pre-programmed electronic memories. Write down all memory settings before disconnecting the negative battery cable. Some radios will require an anti-theft code to be entered after the battery is reconnected. The anti-theft code is typically supplied with your owner's manual. In the event your vehicle's anti-theft code cannot be recovered, contact an authorized dealership to obtain your vehicle's anti-theft code.

3. Turn off the vehicle's ignition and disconnect the negative battery cable.



4. Remove the engine cover from the vehicle.



5. Disconnect the electrical plug from the inlet air temperature sensor by squeezing the locking tab, then pulling the plug straight off the sensor.



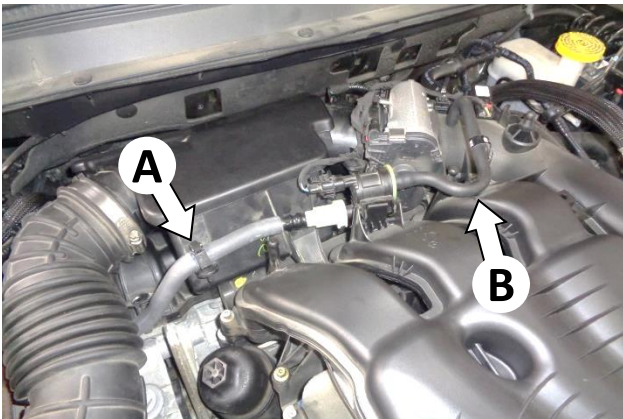
6. Loosen the screw clamp securing the intake duct to the throttle body.



7. Release and remove the plastic push rivet at the front of the resonator.



10. Loosen the screw clamp securing the intake duct to the airbox.



8. Release the hose and clamp (A) from the front of the resonator. Release the hose from the clip (B) in front of the throttle body.



11. Separate the intake duct from the airbox and throttle body, and remove the duct from the vehicle.



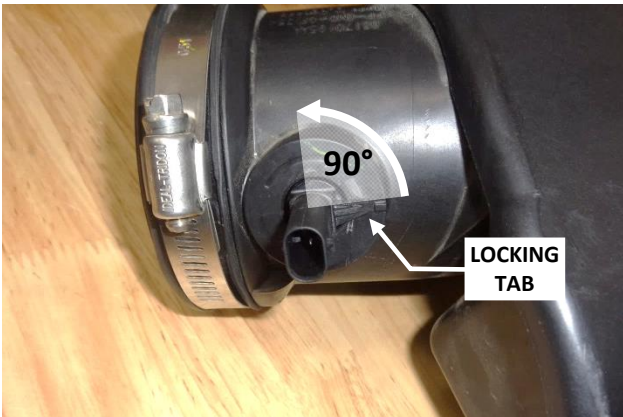
9. Release the hose and clamp from the intake duct.



12. Disconnect the crankcase breather hose from the airbox.

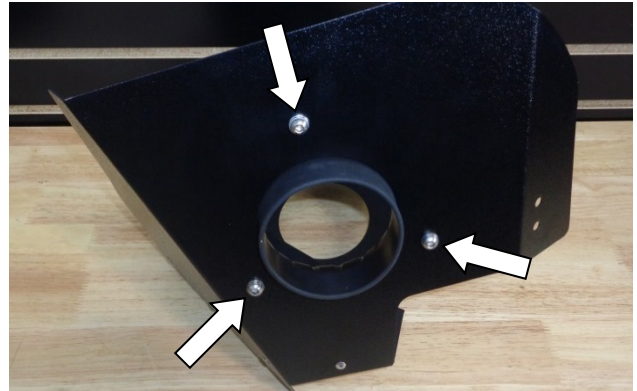


13. Lift the airbox straight up to release its three mount pins from their rubber grommets, and remove it from the vehicle.



14. To remove the inlet air temperature sensor from the resonator, lift its locking tab, rotate the sensor a quarter-turn counter-clockwise, then pull. Remove the o-ring from the sensor. **CAUTION: The sensor is delicate!** Handle it with care, and store it in a safe location until reinstallation.

ASSEMBLE AND INSTALL YOUR FLOWMASTER COLD AIR INTAKE SYSTEM:



15. Assemble the air filter adapter (3) to the heat shield (4) using the M6 screws (8), lock washers (7) and flat washers (6).



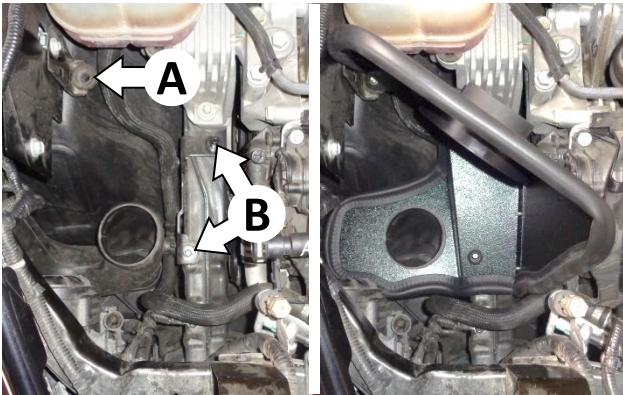
16. Attach the gasket (5) to the heat shield in two pieces, with gaps at the two corners shown. Firmly press the gasket onto the heat shield, gradually working your way around. Use metal-cutting shears to cut the gasket to fit.



17. Attach bracket (17) to the heat shield using two 1/4-20 screws (19) and flat washers (20) (against the heat shield), and lock washers (21) and nuts (22) (against the bracket). Then attach the barbed pin (18) to the bracket using M6 screw (8), flat washer (7), and lock washer (6).



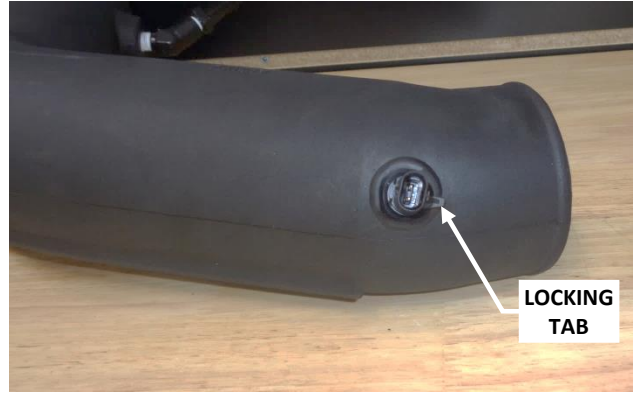
18. Carefully remove the two rubber grommets from the stock airbox, and insert them in the holes on the bottom of the heat shield with the wide openings facing down. (Moistening the holes with soapy water will ease insertion of the grommets.)



19. Install the heat shield in the vehicle, pushing the barbed pin into the rubber grommet (A), and pushing the rubber grommets over the pins (B). (Moistening the grommets with soapy water will ease insertion of the pins.)



20. Apply 2 wraps of nylon thread tape to the elbow (13) and quick connect fitting (14). Install the quick connect fitting in the elbow, then install the elbow in the intake tube (11).



21. Install grommet (12) in intake tube. Carefully push the air temp sensor into the grommet and point the locking tab toward the end of the tube. (Moistening the holes with soapy water will ease insertion of the grommet and sensor.)



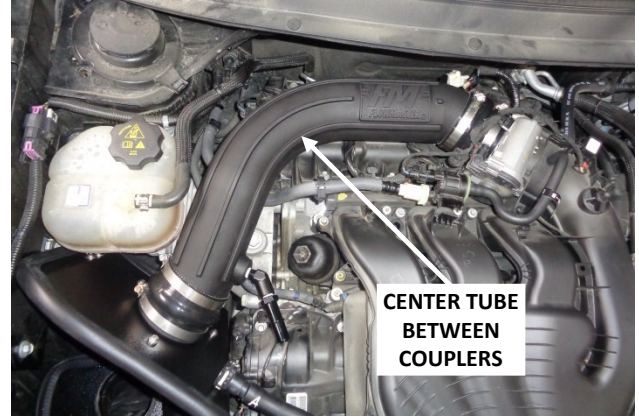
22. Slip the two large screw clamps (9) onto the large coupler (10). Push the coupler onto the intake tube, and snug – do not tighten – only the tube clamp at this time. (Leave the other clamp loose.)



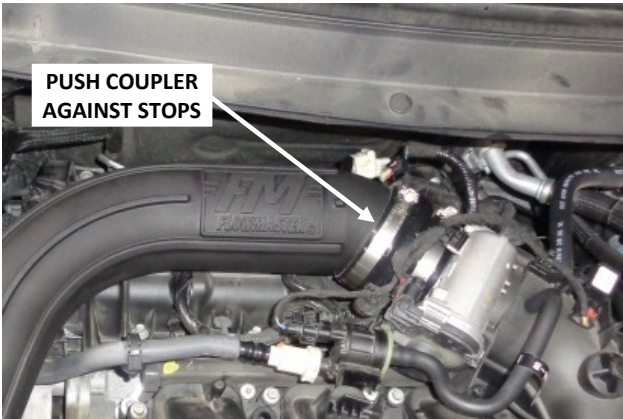
23. Slip the two small screw clamps (15) onto the small coupler (16). Push the coupler onto the intake tube, and snug – do not tighten – only the tube clamp at this time. (Leave the other clamp loose.)



24. Install the intake tube between the heat shield and the throttle body.



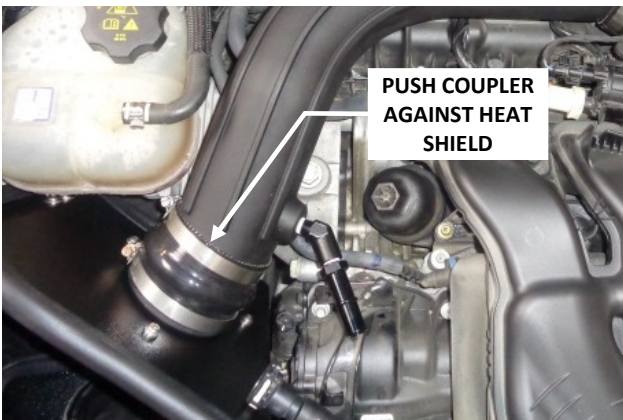
27. Center the intake tube between the couplers, and tighten the two intake tube clamps.



25. Push the rear coupler up against the stops on the throttle body and tighten only the throttle body clamp.



28. Align the elbow and quick connect fitting with the breather hose. Connect the breather hose to the fitting and verify the connection is secure.



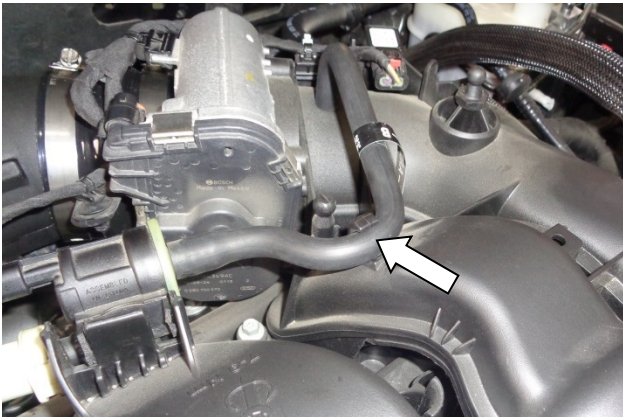
26. Push the front coupler up against the heat shield and tighten only the filter adapter clamp.



29. Slip screw clamp (2) onto air filter (1), then install the filter on the filter adapter and tighten the clamp.



30. Push the MAF sensor plug onto the sensor until it clicks, then verify the connection is secure.



31. Secure the hose in the clip in front of the throttle body.



32. Install the engine cover.



Congratulations, the installation of your FLOWMASTER cold air intake kit is now complete!