



Installation Instructions for  
**717904**  
CAT-BACK FFX DOR EXHAUST  
FITS: 2017-2019 DODGE CHALLENGER  
WITH 5.7L ENGINES

**OVERVIEW:**

1. Please take a moment to read and understand these instructions before installing your Flowmaster performance system.

NOTE: Please inventory all parts before starting the installation process and call our tech line to report any missing parts. This will help avoid potentially stranding your vehicle until any missing replacement parts arrive.

PART NO.	DESCRIPTION	QTY.
26640M	Scavenger Pipe Assembly	1
26626M	Right Tailpipe	1
26628M	Left Tailpipe	1
71229-Z	FFX Muffler	2
PK868	Hardware Pack includes:	1
MC250BS	2½" Stainless Band Clamp	2
MC300BS	3" Stainless Band Clamp	4
HW502	¾" Hanger Keeper	2
HW512	10-32 x ½" HEX THRD Standoff	6
HW243	#10-32 X ¼" Button Head Screw	6
HW240	#10-32 X ¾" Button Head Screw	6
HW315	#10 SM OD Flat Washer	6

**REMOVE STOCK EXHAUST SYSTEM:**

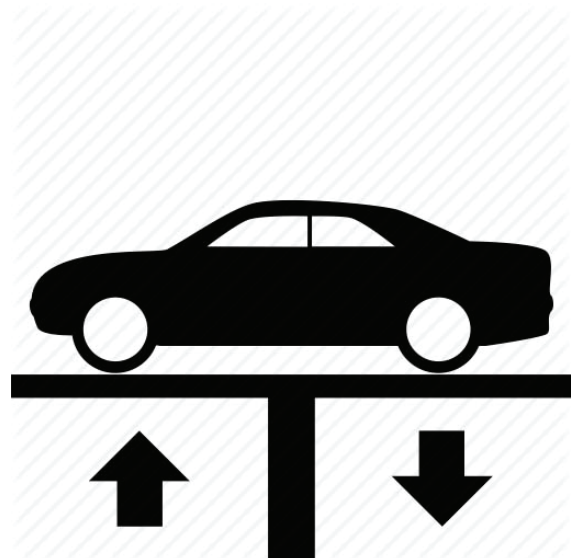
2. Raise vehicle up on a hoist or rack to working height. If you don't have access to a hoist or rack, support vehicle with jack stands.

**WARNING:**

Avoid serious burns! Allow your vehicle time to cool completely before touching any factory engine components.

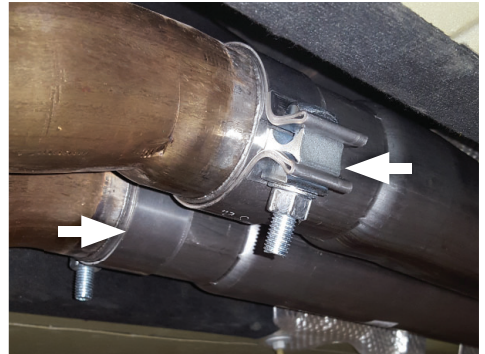
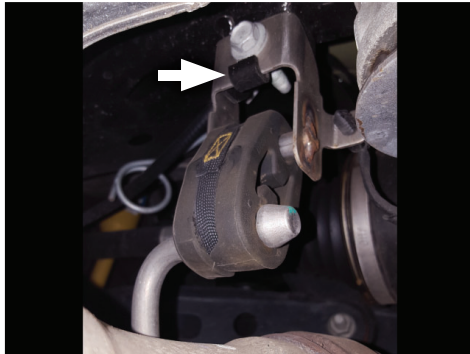
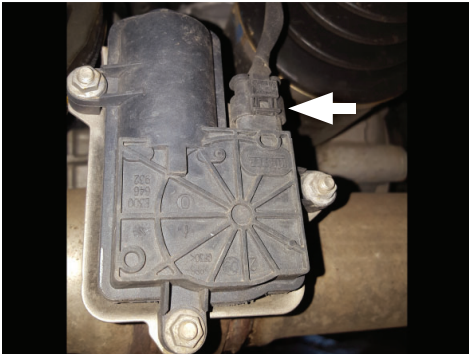
**To ease disassembly of factory components:**

- Apply penetrating lubricant to mounts, bolts and clamps before you remove them.
- Use stands as necessary to support parts as you detach them from your vehicle.



3. Unplug exhaust valve actuators (x2) on each tailpipe. Dismount wire hangers (x2) from rubber isolators and unclip grounding strap from right-side rear hanger. Loosen clamps securing exhaust to catalytic converters.

NOTE: If it is too difficult to slide a wire hanger out of its isolator, you may instead unbolt isolator mount and transfer it to your new system. Then, during install, re-bolt mount back onto your vehicle.



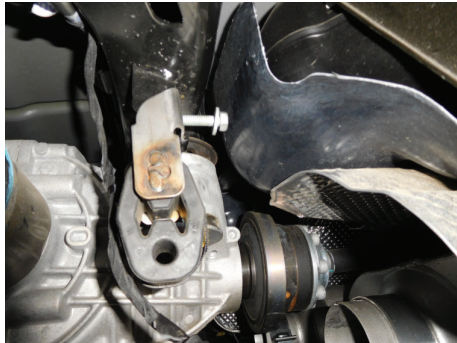
4. Carefully lower stands at vehicle rear and with help from an assistant, slide system back off the head pipes and lower system from vehicle.



5. Remove nuts (x3) securing actuator to mounts on tailpipes. Then remove actuator and spring from mount on each tailpipe.



6. Locate factory exhaust mounts (x2) just forward of rear differential. Remove bolt securing hanger to frame, then lift hanger slightly to clear locating slot and rotate it 180 degrees. Lower hanger back into locating slot then install bolt.



### INSTALL FLOWMASTER EXHAUST SYSTEM

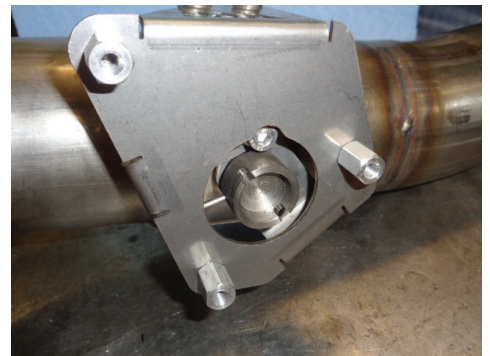
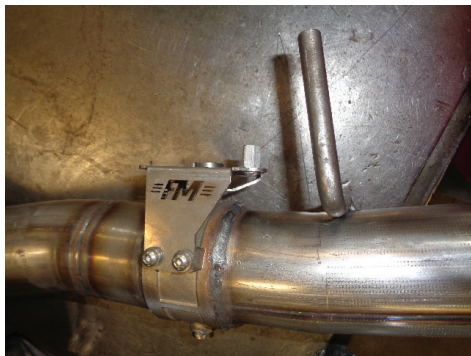
7. Remove nuts from stock and Flowmaster clamps, apply anti-seize compound to bolts and re-install nuts.

**NOTE:** The image in this step is intended for illustrative purposes only and may or may not accurately reflect components included in your kit.



8. Install screws (x3) (HW243) through mounting bracket into standoffs (x3) (HW512) as shown.

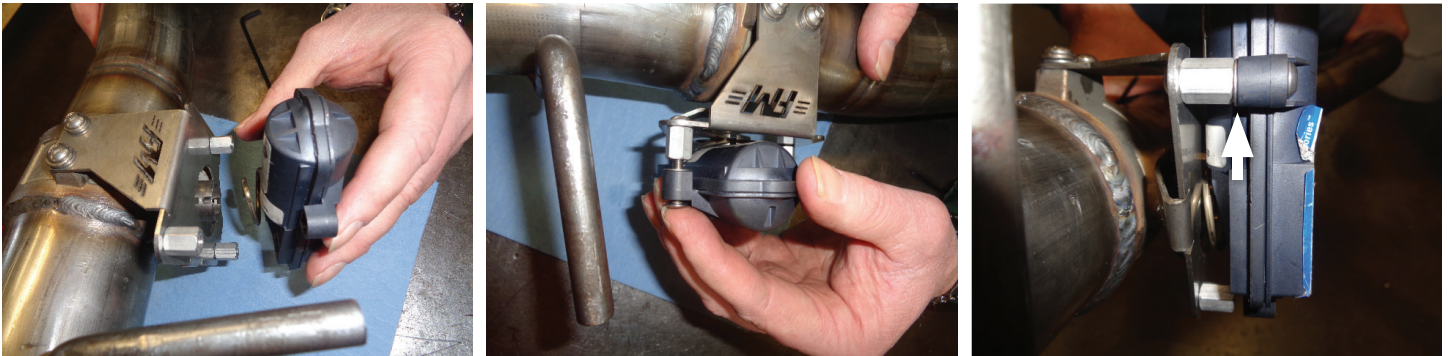
**NOTE:** Complete step for both tailpipe assemblies.



9. Insert **screws (x3) (HW240)** through actuator and **flat washers (x3) (HW315)**. Place actuator onto tailpipe valve mount then tighten screws to fasten assembly.

**NOTE:** Complete step for both tailpipe assemblies.

**CAUTION:** Make sure you place flat washer between actuator and standoff as shown, **NOT** beside screw head.

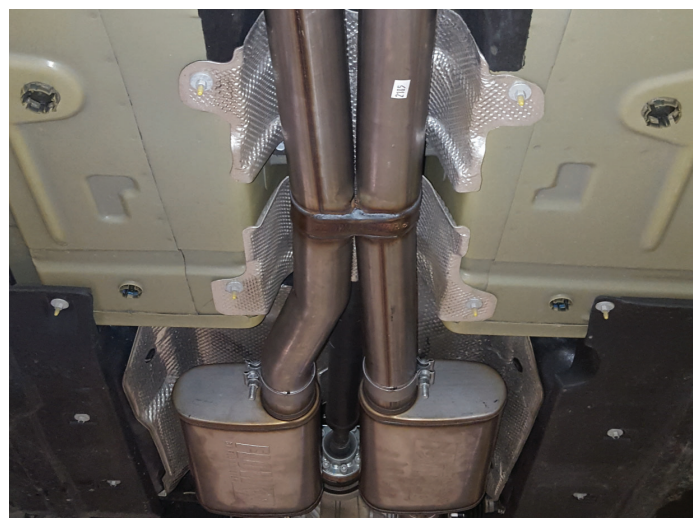


**NOTE:** Offset outlet pipe should be oriented to passenger side during install.

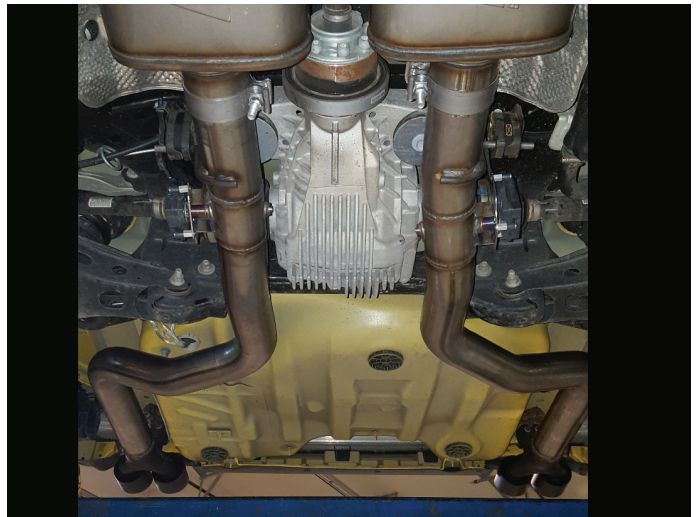
10. Place **clamps (x2) (MC250BS)** onto **scavenger pipe (26640M)** inlet then fit pipe onto factory head pipes about 2". Level and center assembly in drive line tunnel and support with a stand. Tighten clamps just enough to allow for adjustment.



11. Place **clamps (x2) (MC300BS)** onto **FFX muffler (x2) (71229-2)** inlets. Slide mufflers onto scavenger pipe about 1¾" then level them. Tighten clamps just enough to allow for adjustment.

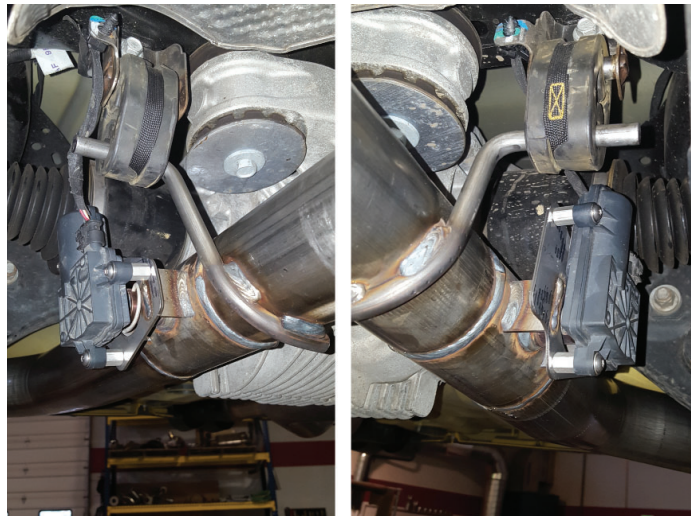


12. Place **clamps (x2) (MC300BS)** onto **right and left tailpipe (26626M, 26628M)** inlets then connect tailpipes to muffler outlets. Connect wire hangers to rubber isolators and adjust tailpipes so that tips are level and centered in bumper cut-out. Tighten clamps just enough to allow for adjustment.



13. Reconnect exhaust valve actuators (x2) as shown.
14. Adjust exhaust system to provide a satisfactory fit. Maintain a minimum of ½" clearance around all exhaust components, keeping in mind suspension, travel and vibration. Then securely tighten clamps.
15. Slide **hanger keepers (x2) (HW502)** onto hanger ends to prevent components from slipping their rubber mounts.
16. We recommend applying a one inch tack weld to all slip-fit connections to secure them. You may also apply high temperature paint over welded areas to prevent rust and premature corrosion.

Congratulations, the installation of your FLOWMASTER performance exhaust system is now complete!





Installation Diagram for  
**717904**  
CAT-BACK FFX DOR EXHAUST  
FITS: 2017-2019 DODGE  
CHALLENGER  
WITH 5.7L ENGINES

