



M-2300-S 2005-2007 Mustang GT 14" Brake Upgrade Kit INSTALLATION INSTRUCTIONS

NO PART OF THIS DOCUMENT MAY BE REPRODUCED WITHOUT PRIOR AGREEMENT AND WRITTEN PERMISSION OF FORD RACING PERFORMANCE PARTS.

Please visit www.fordracingparts.com for the most current instruction information

**!!! PLEASE READ ALL OF THE FOLLOWING INSTRUCTIONS CAREFULLY PRIOR TO INSTALLATION.
AT ANY TIME YOU DO NOT UNDERSTAND THE INSTRUCTIONS, PLEASE CALL THE FORD RACING
TECHLINE AT 1-800-367-3788 !!!**

OVERVIEW:

This kit is designed for use on the 2005-2007 Mustang GT. The use of a floor hoist is recommended. If you do not have access to one, use a hydraulic floor jack and jack stands to raise the vehicle.

**!!! CAUTION: JACK STANDS MUST BE USED ON A LEVEL SURFACE AND BE SECURELY SEATED.
FAILURE TO DO SO MAY RESULT IN PERSONAL INJURY OR VEHICLE DAMAGE !!!**

KIT INCLUDES:

| <u>Item #</u> | <u>Qty</u> | <u>Description</u> | <u>Part Number</u> |
|---------------|------------|------------------------------|--------------------|
| 1 | 2 | 14" GT-500 Rotors | 7R3Z-1125-AA |
| 2 | 2 | Brake Dust Shields | 7R3Z-2K004-A |
| 3 | 1 | Brembo 4-Piston Caliper RF | 7R3Z-2B120-A |
| 4 | 1 | Brembo 4-Piston Caliper LF | 7R3Z-2B121-A |
| 5 | 1 | Performance Brakeline Kit | Goodridge 12364 |
| 6 | 1 | Rear Brake Pad Kit | 7R3Z-2200-A |
| 7 | 4 | Caliper Anchor Bolts | W710233-S439 |
| 8 | 6 | Dust Shield to Knuckle Bolts | W500020-S439 |
| 9 | 4 | Cable Ties | LCR-4340 |

| | | |
|--------------------------|---------------------|-------------|
| Additional Service Parts | Front Brake Pad Kit | 7R3Z-2001-A |
|--------------------------|---------------------|-------------|



Factory Ford shop manuals are available from Helm Publications, 1-800-782-4356

M-2300-S 2005-2007 Mustang GT 14" Brake Upgrade Kit INSTALLATION INSTRUCTIONS

NO PART OF THIS DOCUMENT MAY BE REPRODUCED WITHOUT PRIOR AGREEMENT AND WRITTEN PERMISSION OF FORD RACING PERFORMANCE PARTS.

INSTALLATION INSTRUCTIONS:

NOTES:

Fits 2005-07 Mustang GT.
Kit will upgrade the front brakes to 2007 SVT Mustang Cobra 14" rotors and 4-piston calipers.
Includes 2007 SVT Mustang Cobra rear pads for use in stock Mustang GT rear calipers.
Includes Goodridge DOT four-piece hose kit and attaching parts.
Requires 18" M-1007-S1895, M-1007-S1895B wheels or equivalent for caliper clearance.
For vehicles with 16" or 17" wheels from the factory: installing 18" x 8.5" or 18" x 9.5" wheels, use steering stop 6R3Z-3932-CA.

REMOVAL OF PRODUCTION FRONT BRAKES:



Pic. 1



Pic. 2

STEP 1: Raise and safely support the vehicle with stands (see Pic. 1).

STEP 2: Remove front wheels (see Pic. 2).



Pic. 3



Pic. 4

STEP 3: Remove 10mm bolt from back of strut holding the brake line on (see Pic. 3).

STEP 4: Remove wheel speed sensor clips from brake line (see Pic. 4).

M-2300-S
2005-2007 Mustang GT 14" Brake Upgrade Kit
INSTALLATION INSTRUCTIONS

NO PART OF THIS DOCUMENT MAY BE REPRODUCED WITHOUT PRIOR AGREEMENT AND WRITTEN PERMISSION OF FORD RACING PERFORMANCE PARTS.



Pic. 5



Pic. 6

STEP 5: Loosen brake hard line at frame rail with line wrench (cap off line) (see Pic. 5).

STEP 6: Remove 10mm bolt for brake line bracket from frame (see Pic. 6).



Pic. 7



Pic. 8

STEP 7: Remove two caliper bolts (see Pics. 7 and 8).

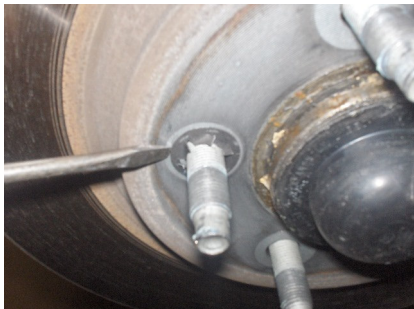


Pic. 9

STEP 8: Remove calipers with the production brake line (see Pic. 9).

M-2300-S
2005-2007 Mustang GT 14" Brake Upgrade Kit
INSTALLATION INSTRUCTIONS

NO PART OF THIS DOCUMENT MAY BE REPRODUCED WITHOUT PRIOR AGREEMENT AND WRITTEN PERMISSION OF FORD RACING PERFORMANCE PARTS.



Pic. 10



Pic. 11

STEP 9: Remove stock rotor (remove two small clips that hold rotor on) (see Pics. 10 and 11).



Pic. 12

STEP 10: Remove three 12mm backing plate bolts (see Pic. 12).



Pic. 13



Pic. 14

STEP 11: Remove backing plate (see Pics. 13 and 14).

M-2300-S 2005-2007 Mustang GT 14" Brake Upgrade Kit INSTALLATION INSTRUCTIONS

NO PART OF THIS DOCUMENT MAY BE REPRODUCED WITHOUT PRIOR AGREEMENT AND WRITTEN PERMISSION OF FORD RACING PERFORMANCE PARTS.

INSTALLATION OF NEW FRONT BRAKES:



Pic. 15



Pic. 16

STEP 1: Install new dust shields and tighten 10mm bolts. Torque to 20 Nm (15 lbs/ft) (see Pics. 15 and 16).



Pic. 17

STEP 2: Install new rotor (see Pic. 17).



Pic. 18



Pic. 19

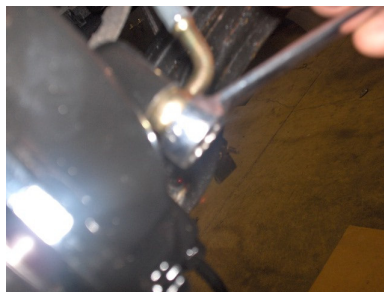
STEP 3: Install new Brembo caliper and pads with two anchor bolts. Torque to 115 Nm (85 lbs/ft) (see Pics. 18 and 19).

M-2300-S 2005-2007 Mustang GT 14" Brake Upgrade Kit INSTALLATION INSTRUCTIONS

NO PART OF THIS DOCUMENT MAY BE REPRODUCED WITHOUT PRIOR AGREEMENT AND WRITTEN PERMISSION OF FORD RACING PERFORMANCE PARTS.



Pic. 20



Pic. 21

STEP 4: Attach new brake line to caliper by putting flow bolt with copper washer on each side of the line into caliper. Torque flow bolt to 40 Nm (30 lbs/ft) (see Pics. 20 and 21).



Pic. 22



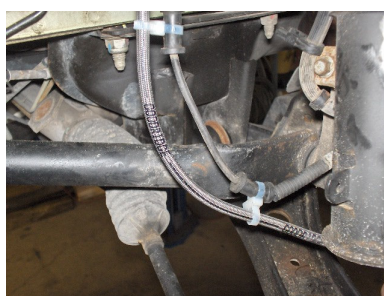
Pic. 23

STEP 5: Re-install 10mm bolt on strut to hold new line. Torque to 20 Nm (15 lbs/ft) (see Pic. 22).

STEP 6: Install new brake line bracket to frame (see Pic. 23).



Pic. 24



Pic. 25

STEP 7: Connect hard brake line to the new brake line. Torque to 20 Nm (15 lbs/ft) (see Pic. 24).

STEP 8: Verify safe routing and secure wheel speed sensor/brake line together with cable ties provided (see Pic. 25).

M-2300-S 2005-2007 Mustang GT 14" Brake Upgrade Kit INSTALLATION INSTRUCTIONS

NO PART OF THIS DOCUMENT MAY BE REPRODUCED WITHOUT PRIOR AGREEMENT AND WRITTEN PERMISSION OF FORD RACING PERFORMANCE PARTS.

STEP 9: Bleed brakes.

STEP 10: Carefully install the 18" wheel and check for caliper to wheel interface before tightening wheel nuts. If none, continue to STEP 11.

STEP 11: Install wheels and torque to 133 Nm (98 lbs/ft).

REMOVAL OF PRODUCTION REAR PADS:



Pic. 26

STEP 1: With car still raised, remove rear wheels (see Pic. 26).



Pic. 27



Pic. 28

STEP 2: Remove retaining clip and remove parking brake cable (see Pics. 27 and 28).

M-2300-S 2005-2007 Mustang GT 14" Brake Upgrade Kit INSTALLATION INSTRUCTIONS

NO PART OF THIS DOCUMENT MAY BE REPRODUCED WITHOUT PRIOR AGREEMENT AND WRITTEN PERMISSION OF FORD RACING PERFORMANCE PARTS.



Pic. 29



Pic. 30

STEP 3: Remove the brake caliper flow bolt and discard the two copper washers (see Pics. 29 and 30).



Pic. 31



Pic. 32

STEP 4: Disconnect rear hard brake line and separate ABS sensor wire (see Pics. 31 and 32).



Pic. 33

STEP 5: Disconnect brake line bracket at frame and remove brake line (see Pic. 33).

M-2300-S
2005-2007 Mustang GT 14" Brake Upgrade Kit
INSTALLATION INSTRUCTIONS

NO PART OF THIS DOCUMENT MAY BE REPRODUCED WITHOUT PRIOR AGREEMENT AND WRITTEN PERMISSION OF FORD RACING PERFORMANCE PARTS.



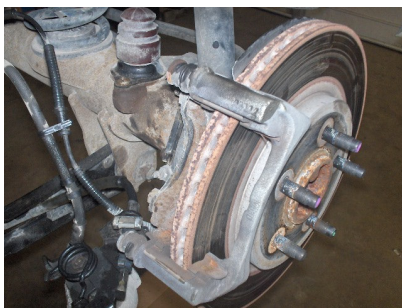
Pic. 34



Pic. 35

STEP 6: Remove the two bolts and the brake caliper (see Pics. 34 and 35).

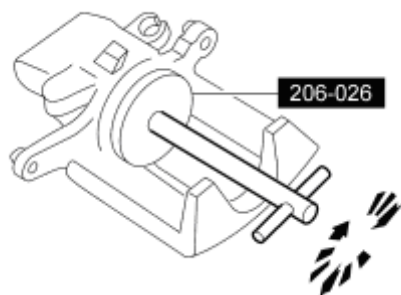
STEP 7: Remove pads and spring clips from caliper anchor.



Pic. 36

STEP 8: Inspect the brake caliper and rotor. Replace as necessary.

INSTALLATION OF NEW REAR PADS:



Pic. 37

STEP 1: Install new brake pads (you will need to rotate pistons to retract them using tool 206-026 – T87P-2588-A or equivalent (see Pic. 37).

M-2300-S 2005-2007 Mustang GT 14" Brake Upgrade Kit INSTALLATION INSTRUCTIONS

NO PART OF THIS DOCUMENT MAY BE REPRODUCED WITHOUT PRIOR AGREEMENT AND WRITTEN PERMISSION OF FORD RACING PERFORMANCE PARTS.



Pic. 38



Pic. 39

STEP 2: Install new spring clips on anchors and install new pads (see Pic. 38).

STEP 3: Position the brake caliper and install the two bolts. Torque to 33 Nm (24 lbs/ft) (see Pic. 39).



Pic. 40



Pic. 41

STEP 4: Using the new brake line bolts and washers, install new line and torque flow bolt to 40 Nm (30 lbs/ft) (see Pic. 40).

STEP 5: Connect bracket to frame (see Pic. 41).



Pic. 42



Pic. 43

STEP 6: Connect new line to body hard line. Torque to 20 Nm (15 lbs/ft) (see Pic. 42).



M-2300-S 2005-2007 Mustang GT 14" Brake Upgrade Kit INSTALLATION INSTRUCTIONS

NO PART OF THIS DOCUMENT MAY BE REPRODUCED WITHOUT PRIOR AGREEMENT AND WRITTEN PERMISSION OF
FORD RACING PERFORMANCE PARTS.

STEP 7: Connect the parking brake cable to caliper (see Pic. 43). Re-install retaining clip.

STEP 8: Bleed both rear calipers.

STEP 9: Install wheels and torque to 133 Nm (98 lbs/ft).

TORQUE SPECIFICATIONS:

| | |
|--------------------------------------|--------------------|
| Front brake dust shield to knuckle | 20 Nm (15 lbs/ft) |
| Front brake caliper to knuckle bolts | 115 Nm (85 lbs/ft) |
| Brake hose to caliper banjo bolts | 40 Nm (30 lbs/ft) |
| Brake line to strut bolt | 20 Nm (15 lbs/ft) |
| Brake line bracket to frame | 20 Nm (15 lbs/ft) |
| Rear brake caliper to anchor | 33 Nm (24 lbs/ft) |
| Wheel nuts | 133 Nm (98 lbs/ft) |

Factory Ford shop manuals are available from Helm Publications, 1-800-782-4356