

Input Voltage	Controller Max Load	RGB Halo Wattage	Low Beam/High Beam Wattage
12V DC	3 amps per zone	6 watt	26W Low / 32W High

Warranty and Disclaimer

Within THREE years after the purchase date, the original buyer may return any XKchrome controller that has failed due to a defect in materials or workmanship. 7" LED headlights that have one or more LEDs fail to illuminate due to a defect in materials or workmanship are covered with a THREE year warranty for **the original buyer**.

Installation of this product must be performed by a licensed professional. Should the failure of the product be the result of damage occurring as a result of improper installation, alteration of the product or an act or omission on the part of the consumer, this warranty is void. XKGLOW Lighting shall not be responsible for any consequential damages which arise from the use and/or installation of the product. If the kit is installed in any manner other than specified, XKGLOW Lighting reserves the right to deny any warranty claims at the discretion of the technical support department. Any product return must include the original packaging, invoice number and a statement of the alleged defect. Upon receipt of the returned product, the company will test the product for defect. If the results of the testing do not support the warranty claim, do not reveal any defect or indicate consumer negligence in the installation and handling of the product, then the product will be returned to you and you will be charged a reshipping fee. If the product is returned from an address within the continental United States, within the first 30 days after purchase, and is found to be defective, XKGLOW Lighting will exchange or refund the original purchase expense. This offer does not extend to the cost for shipping charges on any international packages.

Additional Disclaimer Terms

Please check your local and state laws for the proper use of this product.

- Improper installation of electrical products such as lighting may cause damage to any vehicle or device to which the improperly handled or installed lighting is attached.
- Improperly installed product may cause electrical injury to persons.
- It is recommended that the kit should be installed by a licensed professional.
- XKGLOW assumes no liability for the installation of the product.
- Warranty or liability will not exceed the product purchase price, which shall be buyer's sole and exclusive remedy.

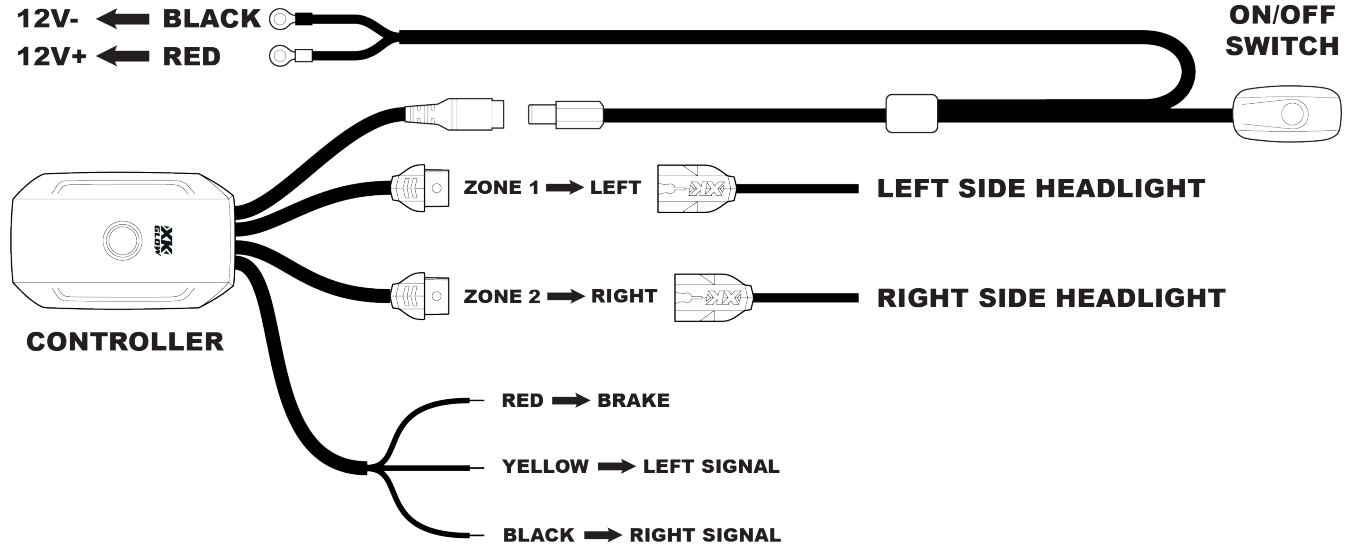
Return/Exchange Procedure

1. Email [xk@xkglow.com] to notify us of the product issue as well as the item number and name of customer on invoice.
2. We will send you the trouble-shooting guide to fix the issue, or to narrow down which of the component(s) need to be replaced. If the issue still exists, we will ask you to send back the defective items to be replaced.
3. Please send the returned item as instructed, along with claims and a telephone number where you can be reached.
4. After the returned item(s) have been accepted and inspected, we will issue a refund or replace the items ASAP. For refunds, item(s) must be sent to XKGLOW within 14 days from date of purchase. Original shipping charges are not refundable.

We always stand behind our products and are committed to our customers! For questions you may have, please contact xk@xkglow.com. We normally respond within 24 hours. (Monday-Friday).

Mounting Instructions

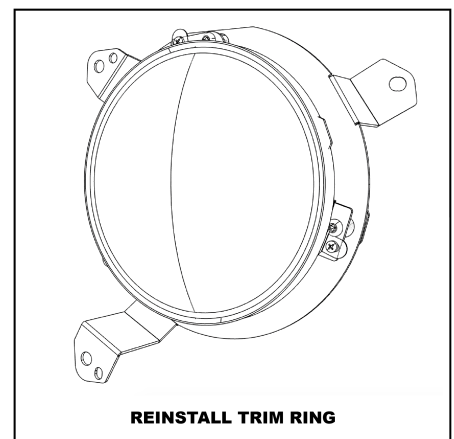
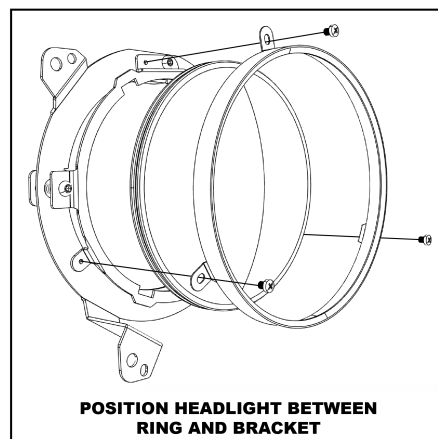
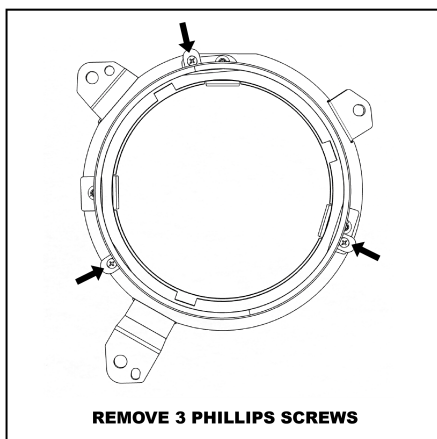
- Test all components before mounting:** As shown below, plug ALL light units together and connect them to the controllers and the switch wiring harness. Connect the RED battery terminal to the POSITIVE pole of 12V DC battery. Connect the BLACK battery terminal to the NEGATIVE pole. Turn on the switch and push the controller buttons to test the headlight. If the lights show any defects, please contact us and we will be happy to replace them for you.



Wiring Options

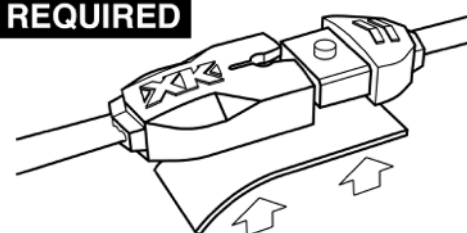
- Option A. Wire Direct to Battery:** To independently control the color changing halos without your vehicle being powered on, you must wire the power wire harness directly to the battery. With this setup, the halos must be turned on via the ON/OFF switch or the XKchrome App. Firmly connect the wire terminals on the harness to the positive and negative terminals on the battery.
- Option B. Wire to Ignition Source:** Wiring the power wire harness to an ignition source will make the color changing halos turn on automatically when the vehicle is powered on. Note- you will not be able to control the halos independently of the vehicles power. To do this, simply wire the **red** wire on the power wire harness to an ignition wire source utilizing an add-a-fuse (not included). Ensure that the fuse is capable of handling the extra current load from the added accessories. Connect the **black** wire on the power wire harness to a nearby ground.

- Remove the factory headlights:** Pop the hood to gain access to the top of the grill. Remove the screws and pop clips securing the grill and remove the grill by pulling it away from the vehicle. The factory headlights are held in place by 3 bolts. Unplug the headlights and remove from the vehicle.
- Install brackets onto headlights:** Following the diagram below, install the brackets onto your new 7" headlights. There are 3 phillips head screws holding the trim ring onto the bracket. Remove the screws and the trim ring. Place the 7" headlight into the bracket paying close attention to the 3 positioning tabs on the rear side of the headlight bucket. These positioning tabs must line up with the notches in the bracket for proper headlight rotation. Once the headlight is in place, reinstall the trim ring and phillips head screws. Repeat for the other side.

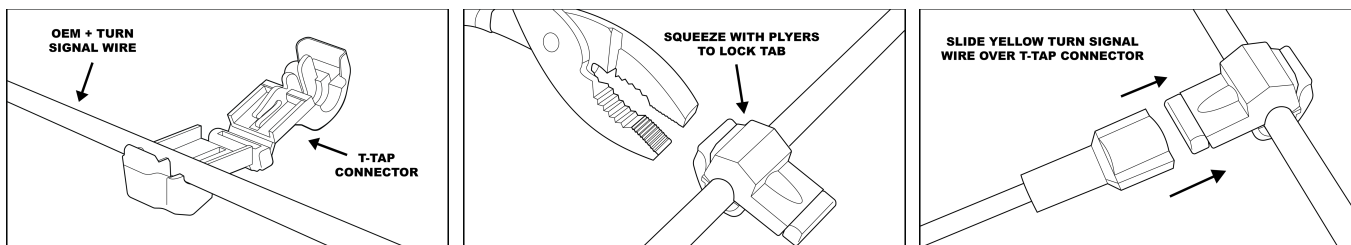


4. **Install headlights onto vehicle:** Install your new headlights onto your vehicle. Plug the headlight in using the included wiring adapter. Secure the headlight in place with the 3 original headlight bolts. Repeat for the other side. Pop the grill back into place and re-install the screws and pop clips.
5. **Route power wiring harness:** Mount the ON/OFF switch in a convenient location. Using zip ties, secure any loose wiring.
6. **Install XKchrome Controller:** Plug the XKchrome Controller into the DC plug from the power wiring harness. Using the provided extension wires, plug Zone 1 into the LEFT side headlight and Zone 2 into the RIGHT headlight.
7. **Tap into the + turn signal wires:** Please check service manual specific to your make and model to verify positive turn signal wires. Tap the YELLOW wire into the LEFT side turn signal positive wire. Finally, tap the BLACK wire into the RIGHT turn signal positive wire. The yellow and black wire will control the turn signal functions. The red wire will not be used in this application.

REQUIRED



Attach 3M tape to the back of both plugs



8. **Route power wiring harness:** Mount the ON/OFF switch in a convenient location. Using zip ties, secure any loose wiring.
9. **Install XKchrome Controller:** Plug the XKchrome Controller into the DC plug from the power wiring harness. Using the provided extension wires, plug Zone 1 into the LEFT side ring and Zone 2 into the RIGHT ring.
10. **Tap into the + turn signal wires:** Please check service manual specific to your make and model to verify positive turn signal wires. Tap the YELLOW wire into the LEFT side turn signal positive wire. Finally, tap the BLACK wire into the RIGHT turn signal positive wire. The yellow and black wire will control the turn signal functions. The red wire will not be used in this application.
11. Power on, download the **XKchrome** App, and enjoy!



Please note: There are multiple XKGLOW apps on the App Store. Only the XKchrome App will work with the XKchrome Bluetooth Controller. The App icon is pictured here.