



2014 JEEP GRAND CHEROKEE

Upper Class Bumper Grille

TOOLS REQUIRED:

Socket and Ratchet Set
Flat/Phillips Screwdrivers

- (6) #10 Washers
- (8) 6/32" Nylon Lock Nuts
- (2) 1/2" L-Brackets
- (1) Upper Class Bumper Grille

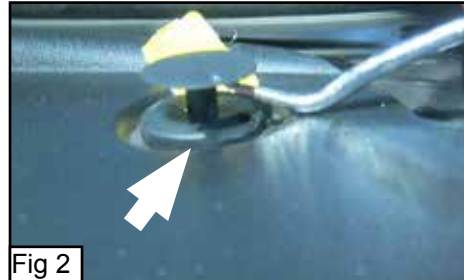


PLEASE READ AND UNDERSTAND ALL INSTRUCTIONS BEFORE INSTALLATION. Auto makers offer varied models to each vehicle and occasionally manufacture more than one body style of the same model. To assure your part is correct; our tech department can be contacted at tech@trexbillet.com to verify fitment or assist with tech questions. All other inquiries can be directed to info@trexbillet.com. In the event you do not have internet access please call 1-800-287-5900.

Step 1

Factory Grille/Bumper Cover Removal

Remove 2 plastic pop clips from the radiator cover plastic with a flat head screwdriver (Fig 1 & 2). Remove the radiator cover. On the front edge of each front fenderwell are a plastic pop rivet, use a hammer and small phillips screwdriver or punch top knock the center of the plastic rivet inward (Fig 3). Remove the screw from the top of both fenderwells (Fig 4). Now pull the gray fender trim outward from from the fenderwell (Fig 5). Pull the top corners of the bumper cover outward there it meets the fender (Fig 6). From underneath the vehicle remove 5 plastic twist clips by hand from the splash guard (Fig 7). Pull the bumper cover forward about 6-12" (Fig 8). Reach behind the bumper cover and unplug both of the fog lamps (Fig 9). Remove the bumper cover. Continued on page 2.





Step 1 Continued

Factory Grille/Bumper Cover Removal

Remove the factory plastic bumper grill insert from the bumper cover using a flat head screwdriver to pop the plastic latches and clips(Fig 10).



Fig 10

Step 2

Mesh Grille Installation

Insert the mesh bumper grille into the front of the bumper opening, the threaded studs will go through the slots in the bumper cover that the plastic insert was inserted into (Fig 11). The two 1/2" L-Brackets will install onto the two bottom center threaded studs and latch onto the back of the bumper cover (Fig 12). Install the 6/32" nylon lock nuts on top of the L-brackets and tighten. The remaining six threaded studs will use only a washer and 6/32" nylon lock nut to secure them to the bumper cover (Fig 13) make sure the threaded studs are protruding through the slots the plastic factory grille was inserted into. Tighten the nylon lock nuts. Reinstall the bumper cover onto the vehicle, remember to reconnect the fog lamps. Installation complete. Thank you for purchasing a T-REX Grille.



Fig 11



Fig 12



Fig 13