

# T-REX

## Billet Grilles

6711101

**07-08 CHEVY**  
**SILVERADO**

6711101

**07-08 CHEVY**  
**SILVERADO**

### **2 PC X-METAL SERIES GRILLE**

#### **Recommended Tools:**

Phillips / Slotted Screwdrivers  
10mm Socket & Ratchet  
5/16" Wrench or Nut Driver  
Die Grinder or Jigsaw (optional)

#### **Parts List / Hardware:**

2 Upper Class Inserts (Top and Bottom)  
16 6-32 Nylon Lock Nuts  
16 #10 Flat Washers  
16 90° / 45° Flange Brackets

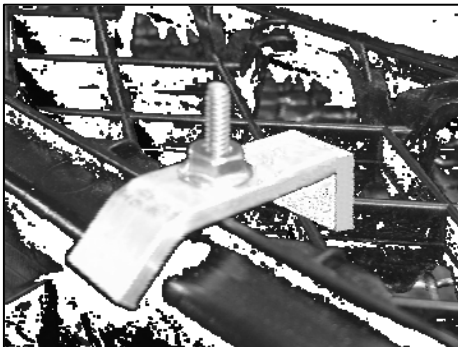
### **Read and understand instructions before attempting installation**

#### **Step 1**

Test fit the grilles into the openings. Remove the radiator cover from the vehicle; then the four 10mm bolts along the top of the grille. The grille has four metal clips along the bottom; these secure the grille to the core support. Use a slotted screwdriver to release the clips. Remove the grille. ***If installing as an overlay; skip to Step 3.***

#### **Step 2**

Apply masking tape to the face of the grilles to prevent scratching. Use a die grinder or jigsaw to cut the inner mesh from the grille openings. Make your cuts at the base of the mesh; leave a 3/16" border around the openings for the grilles to rest.



#### **Step 3**

Center the top grille into the opening of the grille shell. Install the flange brackets onto the mounting studs. Thread a Nylon lock nut onto each stud. Tighten the nuts until the grille is held in place (**DO NOT TO OVER-TIGHTEN**). Use the remaining 'flange brackets, nuts and washers to secure the lower grille in place.

#### **Step 4**

Re-install the grille assembly and radiator cover back onto the vehicle.  
***Thank you for purchasing your T-Rex billet grille. 6/29/06***

