



### 99-04 Ford F-250/350 X-METAL Series - 3 Pc Main Grille Install time: 60 Mins.

#### TOOLS REQUIRED:

- Dyegrinder
- Screwdriver
- Drill & 3/16 Drillbit
- 10mm Socketwrench

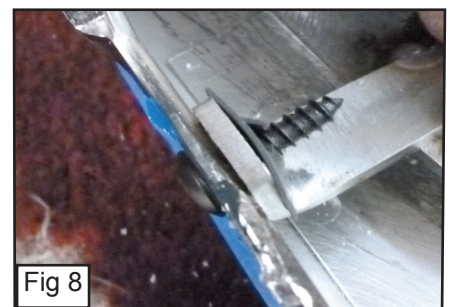
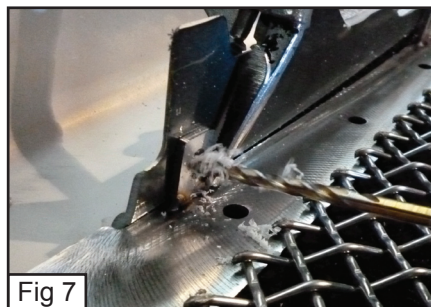
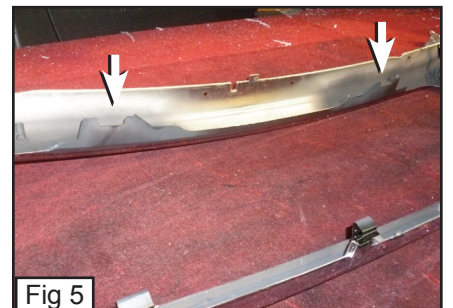
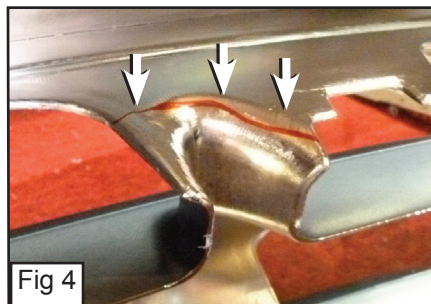
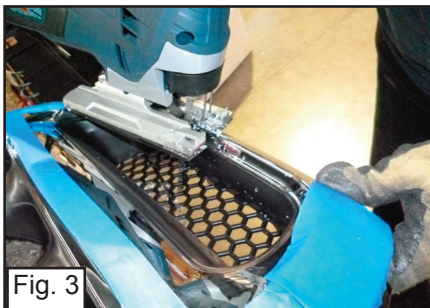
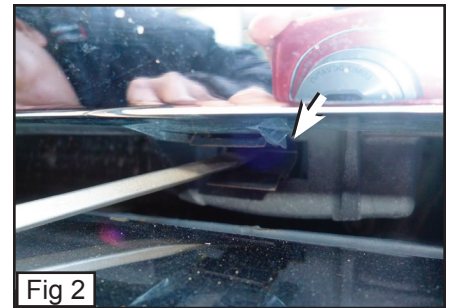
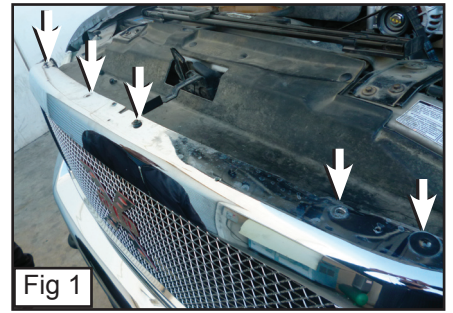
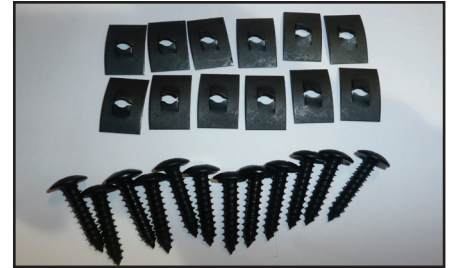
#### PARTS LIST:

- (3) Grilles
- (12) #10 Screws
- (12) #10 Flatnuts

PLEASE READ AND UNDERSTAND ALL INSTRUCTIONS BEFORE ATTEMPTING INSTALLATION.

#### Step 1

- Remove (4) 10mm Bolts across the top of the Factory Grille Shell. (Fig. 1)
- Depress 4 Clips along the bottom of the Factory Grille Shell. (Fig. 2)
- Remove Grille Shell.
- With a Dyegrinder, start Grinding away the Side Grilles as close to the Grille Shell. (Fig. 3)
- When Cutting the Main Grille, Do not cut off the two 3" Flat tabs on top of the inner opening of the Grille Shell, Rather Cut along the Factory Grille.(Fig. 4 & 5)
- Place the Mesh Grille onto the Factory Opening. (Fig. 6)
- With a 3/16 Drill, Drill through the Brackets on the Mesh Grille. (Fig. 7)
- Insert a #10 Screw through the Brackets and Thread a #10 Flatnut. (Fig. 8)



# 671570X

**99-04 FORD  
SUPERDUTY**



# 671570X

**99-04 FORD  
SUPERDUTY**

## **99-04 Ford F-250/350** **X-METAL Series - 3 Pc Main Grille**

- Test Fit and Place a Side Mesh onto the Factory Side Grille Opening. (Fig. 9)
- With the 3/16 Drill, Drill through the Hole on the Bracket that is attached to the Mesh Grille. (Fig. 10)
- Repeat for other side.
- Insert a #10 Screw through the Brackets and Thread a #10 Flatnut. (Fig. 11)

**INSTALLATION COMPLETE**

