



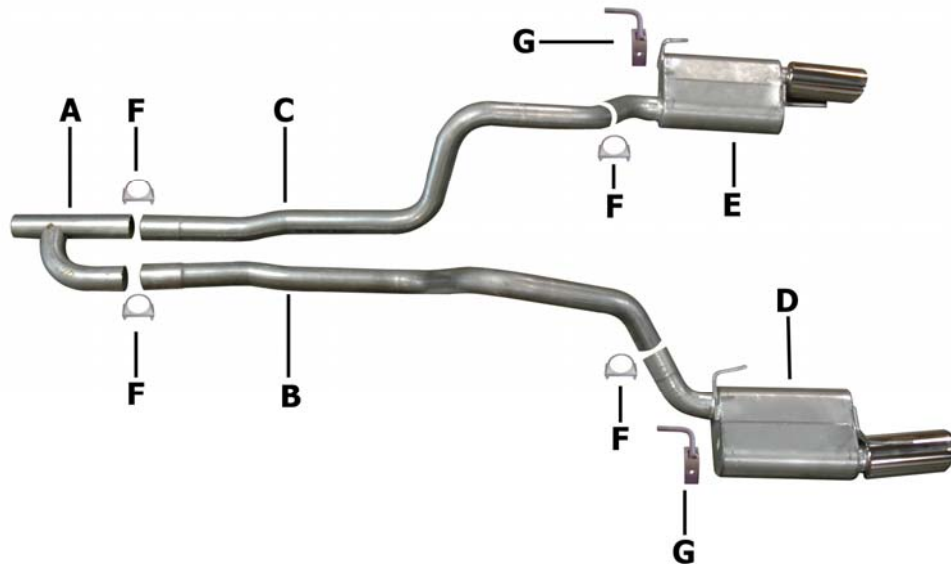
Installation Instructions

Cat-Back Dual Split Rear Exit Exhaust

05-07 Ford Mustang, 4.0L, 2wd

(To be used with factory GT bumper)

Part #319005



ITEM	PART	QUANTITY	DESCRIPTION
A	700902	1	2.5" h-pipe Adapter
B	700903	1	2.5" Driver side tailpipe
C	700904	1	2.5" Passenger side tailpipe
D	700801	1	Driver side muffler assembly w/ welded 4" intercooled tip
E	700802	1	Passenger side muffler assembly w/ welded 4" intercooled tip
F	5757	4	2.5" Clamp
G	4266	2	Muffler Hanger
H	4240	2	Rubber grommet

Thank you for purchasing our Gibson Exhaust System for your vehicle.
 If you need further assistance, please do not hesitate to call our technical department at
 (800) 528 -3044 Monday through Friday, 8am to 5 pm.

Installation Instructions #319005

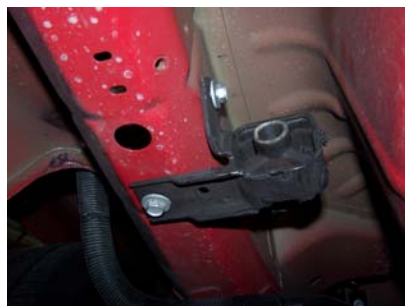
When installing this exhaust system make sure to use proper safety precautions. Use jack stands when working under the vehicle, set parking brake, block tires and use safety glasses and gloves. Allow exhaust to cool before attempting installation. Severe injury or burns could occur if safety measures are not taken.

SUGGESTED TOOLS: 1/2", 9/16", 15mm wrenches & sockets, WD-40, hacksaw, jack stands

1. Disconnect the negative battery cable before removal of OEM exhaust. This will allow the computer to reset and recognize the new exhaust. Lay out the exhaust on the floor so it looks like the drawing and compare parts with manual.
2. To remove your stock exhaust system, first remove the clamp located just in front of the muffler. Set muffler aside. Then remove the clamp just after the factory y-pipe. Now, all stock components can be removed. Leave all rubber grommets on the factory hangers on the vehicle.



3. Next, remove the factory hanger from the rear and re-install on the driver side. Use your factory bolts, they are self-tapping. So you should have no problem re-installing the hanger. (see picture) Remove rubber grommet hanger. Do not discard bolts, you will re-use. (see picture)



4. Now you are going to install the system in reverse order. First, install your new Gibson mufflers. There are specific left and right assemblies. Install rear muffler hangers using bolts from rubber grommet hanger. They are self-tapping bolts.



5. After mufflers are installed you can now install the driver and passenger side tailpipes. Leave loose, use clamp #D to attach pipes to mufflers.



6. Install h-pipe adapter onto tailpipes. Use your factory clamp to attach it to your stock pipe. Do not tighten. Use clamps #D to attach your adapter to your tail pipe. Do not tighten.



7. After kit is installed, adjust your kit so it does not hit or rub on anything. Check that your exhaust tips are not touching your bumper. After checking everything, now tighten all clamps starting from the front and working your way to the rear. Use stainless steel cleaner and a Scotch Brite pad weekly to prevent tip from discoloration. Inspect all fasteners after 25-50 miles of operation and re-tighten as necessary.



GIBSON EXHAUST systems are designed on a factory stock vehicle
Any aftermarket products installed could increase the sound levels of the exhaust.
Make sure there is a 1" clearance from ALL rubber brake lines, shock boots, lines, tires, etc. to prevent heat related damage or fire.