



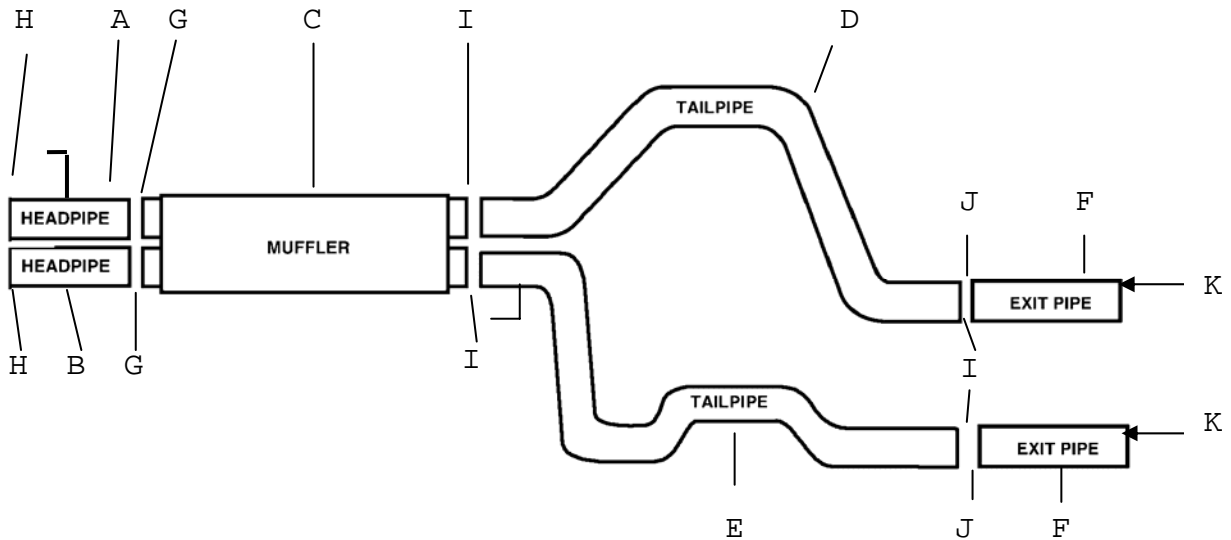
PERFORMANCE EXHAUST SYSTEMS

INSTRUCTION MANUAL

STAINLESS SPLIT REAR EXHAUST SYSTEM

2004 SILVERADO/ SIERRA TRUCK 2500 6.0L 2/4WD
CREW CAB, SHORT BED

PART #65550



ITEM	PART #	QTY.	DESCRIPTION
A	872-700621S	1	3" S.S PASSENGER SIDE HEADPIPE W/HANGER
B	873-700622S	1	3" S.S DRIVERSIDE HEADPIPE
C	766300S	1	STAINLESS SUPERFLOW MUFFLER
D	876-700627S	1	2- 1/2" S.S PASSENGER SIDE TAILPIPE
E	877-700628S	1	2 -1/2" S.S DRIVERSIDE TAILPIPE
F	546-700346S	2	2- 1/2" STAINLES EXIT PIPES
G	OHD300	2	3" CLAMP
H	5758	2	2-3/4" CLAMP
I	5757	4	2 1/2" CLAMP
J	4231	2	TAILPIPE HANGERS
K	500374	2	STAINLESS TIPS

WILL NOT FIT WITH A FIFTH WHEEL TRAILER HITCH & HEAVY DUTY TRUCK

Thank you for purchasing our GIBSON EXHAUST SYSTEM for your Vehicle. If you need further assistance, please do not hesitate to call our Technical Department at (800) 528-3044, Monday through Friday, 8:00 am to 5:00 pm 1104

EXHAUST INSTALLATION #65550

When installing this exhaust system make sure to use proper safety precautions. Use jack stands when under the truck, set parking brake, block tires and use safety glasses and gloves.

DO NOT WORK WITH HOT PIPES!

SUGGESTED TOOLS:

½" ,9/16", 15mm wrench and socket, Wd-40, Hacksaw, Jack Stand



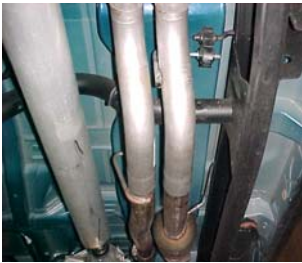
Lay out the exhaust on the floor so it looks like the drawing and compare parts with manual. **To remove the stock exhaust cut 13" just in front of the muffler.** Leave all rubber grommets in place. Use WD-40 to aid in removal of exhaust and hangers. Use hacksaw to cut tailpipe off.



Install driverside overaxle tailpipe #E into muffler 1 ½" to 2". Use clamp #I to secure pipe to muffler. Do not tighten. Next, insert welded hanger into rubber grommet. Rotate pipe until it connects with rear hanger. Attach clamp #I to tail pipe.



Install passenger side overaxle tailpipe #D into muffler 1 ½" to 2". Long end of pipe goes into muffler. Secure with clamp #I. Do not tighten.



Install driverside headpipe #B. Then install headpipe #A and then Insert welded hanger into rubber grommet Secure both pipes with clamp #H. Do not tighten.



Install exit pipes #F Use clamps # I to attach to tailpipes. These clamps also attach to the metal hangers # J. You will need to rotate in order to adjust for clamping.



Install muffler # C onto head pipes 1-1/2" to 2" with the louvers facing towards the converter. Use a jack stand to support the muffler. Use clamps #G to secure the muffler to the head pipes. Do not tighten. Outlets will be on the bottom.



Now go back and tighten all clamps, nuts and bolts. Start from the front and work back.



Install tailpipe hangers #J onto end of tailpipes using clamp #I. There will be about a 2" hole above the end of both tailpipes on the frame to bolt the hangers. Do not tighten.



Install stainless tips to your desired look.

MAKE SURE YOU HAVE A 1" CLEARANCE FROM ALL BRAKE LINES, SHOCK BOOTS, TIRES, FUEL LINES, ETC...