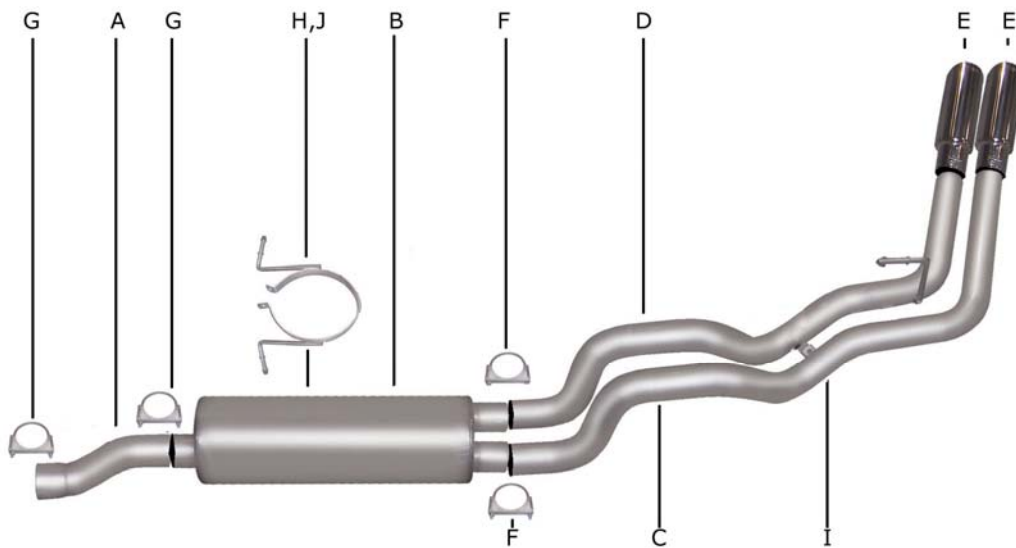




Installation Instructions

Cat-Back Dual Sport Exhaust
 2007 Dodge Ram 1500, 4.7L, 2wd
 Quad Cab, Short Bed

Part #6559



ITEM	PART	QUANTITY	DESCRIPTION
A	700818	1	3" Headpipe
B	789800	1	Superflow SFT Muffler
C	700810	1	2.5" Driver side tailpipe
D	700922	1	2.5" Passenger side tailpipe
E	500374	2	3.5" Stainless tip
F	5757	2	2.5" Clamp
G	OHD300	2	3" Clamp
H	4337	1	7" Band clamp
I	BO-906	1	Bolt kit for tailpipe
J	BO-1015	1	Bolt kit for band clamp

Thank you for purchasing our Gibson Exhaust System for your vehicle.
 If you need further assistance, please do not hesitate to call our technical department at
 (800) 528 -3044 Monday through Friday, 8am to 5 pm.

Installation Instructions #6559

When installing this exhaust system make sure to use proper safety precautions. Use jack stands when working under the vehicle, set parking brake, block tires and use safety glasses and gloves. Allow exhaust to cool before attempting installation. Severe injury or burns could occur if safety measures are not taken.

SUGGESTED TOOLS: 1/2", 9/16", 15mm wrenches & sockets, WD-40, hacksaw, jack stands

1. Disconnect the negative battery cable before removal of OEM exhaust. This will allow the computer to reset and recognize the new exhaust. Lay out the exhaust on the floor so it looks like the drawing and compare parts with manual.



2. To remove stock exhaust, unclamp just in front of the muffler. Do not remove stock headpipe. Disengage the welded hangers from the rubber grommets. Use WD-40 to aid in this process. Do not damage or remove the rubber grommets as you will re-use them to mount your new system.



6. Install the passenger side over axle tailpipe #D into the muffler 1.5-2". Use clamp #F to secure tailpipe to muffler. Do not tighten.



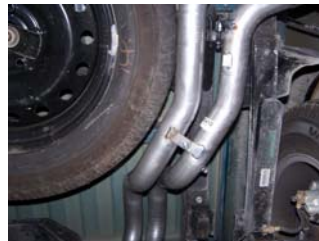
3. Install headpipe #A onto your existing stock headpipe and secure with clamp #G. Use a jack stand to support the converter.



7. Install the driver side over axle tailpipe #C into the muffler 1.5-2" Use clamp #F to secure tailpipe to muffler. Do not tighten.



4. Install muffler #B onto headpipe #A 1.5-2" with the louvers facing towards the converter. Use a jack stand to support the muffler. Use clamp #E to secure the muffler to the headpipe. Do not tighten. Muffler inlet is looking into the louvers.



8. Attach tailpipes together with bolt kit #I. Do not tighten. Driver side tabs will be on the bottom.



5. Slide band clamp #H onto muffler #B and attach with bolt kit #J. Do not tighten. Insert hangers into rubber grommets.



9. Install stainless steel tips. Clamp down. When you have everything in place, firmly tighten all bolts and clamps down securely. Use stainless steel cleaner and a Scotch Brite pad weekly to prevent tip from discoloration. Inspect all fasteners after 25-50 miles of operation and re-tighten as necessary.

GIBSON EXHAUST systems are designed on a factory stock vehicle
Any aftermarket products installed could increase the sound levels of the exhaust.

Make sure there is a 1" clearance from ALL rubber brake lines, shock boots, lines, tires, etc. to prevent heat related damage or fire.