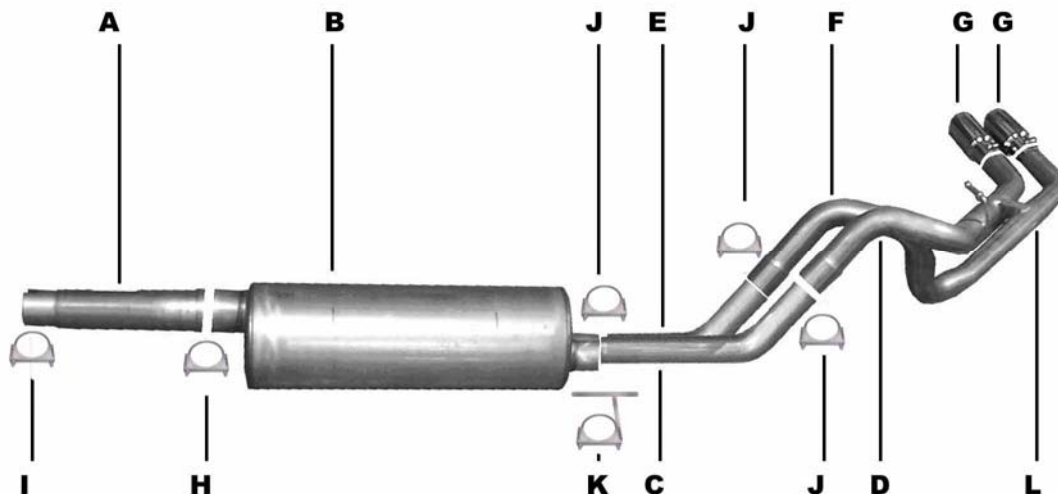




**INSTRUCTION MANUAL**  
**CAT-BACK STAINLESS DUAL SPORT EXHAUST**  
**98-03 FORD F150/F250 TRUCK 4.2L, 4.6L, 5.4L**  
**STANDARD CAB & SUPERCAB SHORT BED & LONG BED 2/4WD**  
**01-03 4.6L, 5.4L SUPERCREW, SHORT BED 2/4WD**  
**PART # 69200**



ITEM	PART#	QUANTITY	DESCRIPTION
A	321-700176S	1	3" X 16" STAINLESS S-BEND HEADPIPE
B	758300S	1	2 ¼" STAINLESS SUPERFLOW MUFFLER
C	311-700173S-1	1	2.25" STAINLESS FRONT DRIVERSIDE TAILPIPE
D	312-700173S-2	1	2.25" STAINLESS OVERAXLE DRIVERSIDE TAILPIPE
E	313-700174S-1	1	2.25" STAINLESS FRONT PASSENGERSIDE TAILPIPE
F	314-700174S-2	1	2.25" STAINLESS OVERAXLE PASSENGERSIDE TAILPIPE
G	500370	2	3" STAINLESS TIPS
H	OHD300	1	3" CLAMP
I	5757	1	2.5" CLAMP
J	5756	3	2.25" CLAMP
K	4156	1	HANGER -REAR MUFFLER
L	BO-906	1	BOLT KIT FOR TAILPIPE

**4WD'S- MAY NEED TO REMOVE THE SPARE TIRE.**  
**WILL NOT FIT HEAVY DUTY TRUCK.**

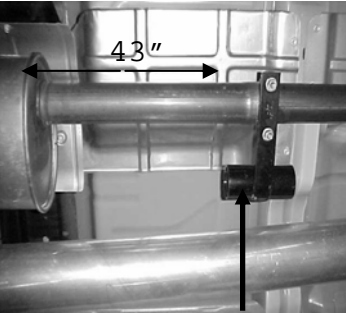
THANK YOU FOR PURCHASING GIBSON PERFORMANCE EXHAUST SYSTEMS FOR YOUR VEHICLE. IF YOU NEED TECHNICAL CALL 800-528-3044, MONDAY - FRIDAY, 8:00AM TO 5:00PM. 0206

# EXHAUST INSTALLATION #69200

WHEN INSTALLING THIS EXHAUST SYSTEM MAKE SURE YOU USE ALL THE PROPER SAFETY PRECAUTIONS. USE JACK STAND TO SUPPORT THE TRUCK WHILE OFF THE GROUND. SET PARKING BRAKE, BLOCK THE TIRES AND USE SAFETY GLASSES AND GLOVES. DO NOT WORK WITH HOT PIPES!

### SUGGESTED TOOLS:

HACKSAW, JACKSTAND, 1/2" WRENCH & SOCKET, 9/16" SOCKET & WRENCH, WD-40, MEASURING TAPE  
**TO REMOVE STOCK EXHAUST SEE BELOW FOR PROPER VEHICLE APPLICATION.**



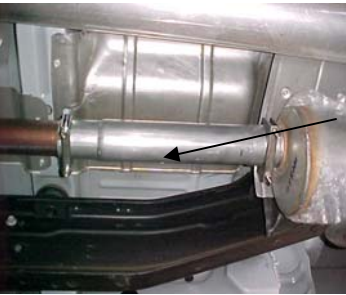
**SUPERCAB (Extended Cab)  
SHORT&LONG BED**

**STANDARD CAB-LONG BED**

**CREW CAB (Supercrew) – SHORT BED**

MEASURE 43" FROM THE REAR OF THE MUFFLER FORWARD AND CUT. YOU WILL BE REMOVING THE STOCK ALIGNMENT PIN. CUT STOCK EXHAUST OFF AND USE WD-40 ON ALL HANGERS. LEAVE RUBBER GROMMETS IN PLACE.

INSTALL NEW HEADPIPE #A AND ATTACH TO FACTORY PIPE USING CLAMP #I.



### **STANDARD CAB, SHORT BED**

UNCLAMP STOCK MUFFLER. YOU WILL LEAVE THE FACTORY ALIGNMENT PIN IN PLACE. FOR EASIER REMOVAL HEAT UP CLAMP. CUT STOCK EXHAUST OFF AND USE WD-40 ON ALL HANGERS. LEAVE RUBBER GROMMETS IN PLACE.

CUT 4" OFF THE GIBSON HEADPIPE#A. INSTALL HEADPIPE TO THE FACTORY HEADPIPE AND INSERT INTO FACTORY ALIGNMENT PIN AND ATTACH WITH CLAMP #I

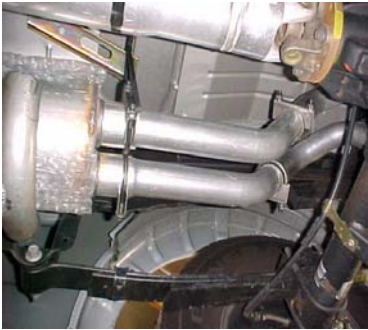


### **NEXT, ALL TRUCKS**

INSTALL MUFFLER INLET ONTO HEADPIPE 1-1/2" TO 2" AND ATTACH USING CLAMP #H. DO NOT TIGHTEN. USE A JACKSTAND TO SUPPORT MUFFLER. OUTLETS SHOULD BE ON THE BOTTOM.



INSTALL THE DRIVERSIDE FRONT TAILPIPE #C TO OUTLET OF MUFFLER AND ATTACH WITH HANGER #K AND INSERT INTO WELDED RUBBER HANGER. INSTALL DRIVERSIDE OVERAXLE TAILPIPE #D TO FRONT DRIVERSIDE TAILPIPE AND ATTACH USING CLAMP #J TO FRONT PIPE. INSTALL PASSENGER SIDE FRONT TAILPIPE #E TO OUTLET OF MUFFLER AND ATTACH WITH CLAMP #J.



INSTALL PASSENGER SIDE OVERAXLE TAILPIPE #F TO FRONT PASSENGER SIDE TAILPIPE AND ATTACH WITH CLAMP #J. THE SPARE TIRE MAY NEED TO BE LOOSENED AND PUSH TO THE DRIVERSIDE AND THEN ROTATE THE OVERAXLE PIPE TO GAIN CLEARANCE.



USE BOLT KIT #L TO ATTACH BOTH TAILPIPES TOGETHER. MAKE SURE YOU HAVE EQUAL SPACE BETWEEN SHOCK AND SPARE TIRE.

PASSENGERSIDE TAILPIPE WILL END UP ON THE DRIVERSIDE. THE DRIVERSIDE TAILPIPE CROSSES OVER THE PASSENGER TAILPIPE.



INSTALL THE STAINLESS STEEL TIPS. USE ANY ALUMINUM OR STAINLESS STEEL CLEANER TO POLISH TIP. NOW TIGHTEN ALL HANGERS AND CLAMPS.

**MAKE SURE YOU AT LEAST A 1" CLEARANCE ON ALL BRAKE LINES, FUEL LINES, SHOCKS, TIRES, ETC.**