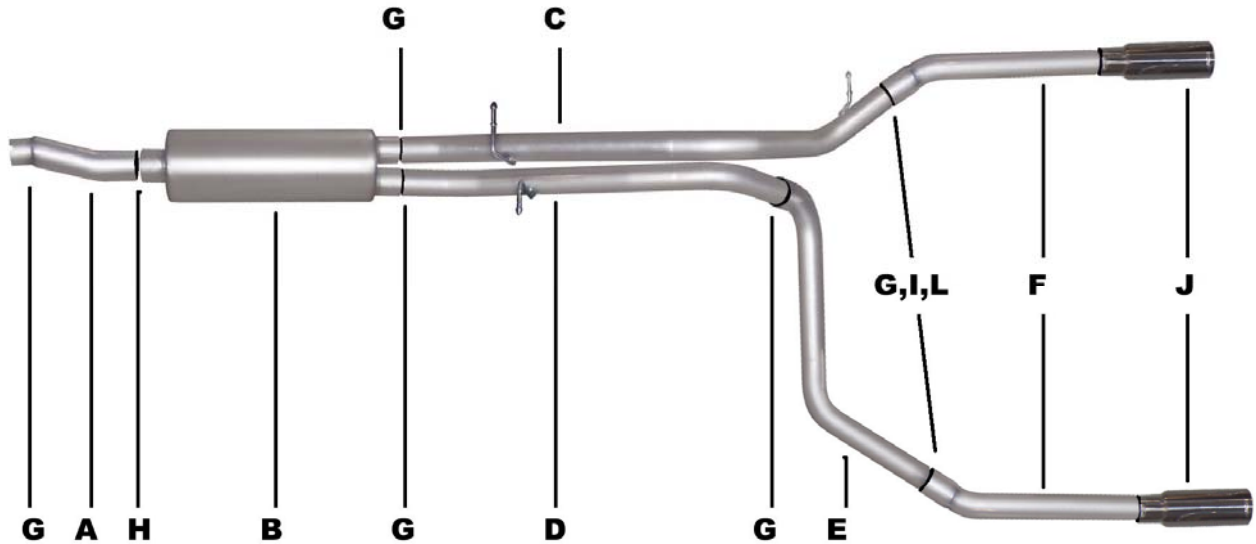




INSTRUCTION MANUAL
CAT-BACK STAINLESS SPLIT REAR EXHAUST
98-03 FORD F150/F250 TRUCK 4.2L, 4.6L, 5.4L
STANDARD CAB & SUPERCAB SHORT BED & LONG BED 2/4WD
01-03 4.6L, 5.4L SUPERCREW, SHORT BED 2/4WD
PART # 69504



ITEM	PART#	QUANTITY	DESCRIPTION
A	321-700176S	1	3" STAINLESS HEADPIPE
B	758219S	1	STAINLESS SUPERFLOW MUFFLER
C	770-700538S	1	2.5" STAINLESS PSGRSIDE OVERAXLE TAILPIPE
D	771-700539S	1	2.5" STAINLESS FRONT DRVR. TAILPIPE
E	772-700540S	1	2.5" STAINLESS DRVR. OVERAXLE TAILPIPE
F	253-500626S	2	2.5" STAINLESS EXIT PIPES
G	5757	7	2.5" CLAMPS
H	OHD300	1	3" CLAMP
I	08269	2	10" METAL HANGER
J	500374	2	3.5" STAINLESS TIPS
K	ZIP	2	ZIP TIES
L	BO-101	2	BOLT KIT FOR 10" HANGER

SPARE TIRE MUST BE REMOVED IF OVER 16".
4 W/D'S MUST REMOVE SPARE TIRE. WILL NOT FIT HEAVY DUTY TRUCK

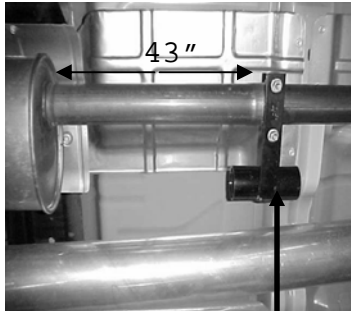
Thank you for purchasing our GIBSON PERFORMANCE EXHAUST SYSTEM for your vehicle. If you need further assistance, please do not hesitate to call our Technical department at 1-800-528-3044 Monday through Friday, 8:00 am to 5:00 pm0206

EXHAUST INSTALLATION #69504

WHEN INSTALLING THIS EXHAUST SYSTEM MAKE SURE YOU USE ALL THE PROPER SAFETY PRECAUTIONS. USE JACK STAND TO SUPPORT THE TRUCK WHILE OFF THE GROUND. SET PARKING BRAKE, BLOCK THE TIRES AND USE SAFETY GLASSES AND GLOVES. DO NOT WORK WITH HOT PIPES!

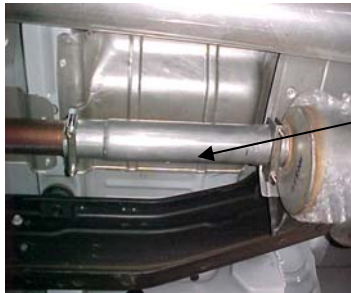
SUGGESTED TOOLS:

HACKSAW, JACKSTAND, 1/2" WRENCH & SOCKET, 9/16" SOCKET & WRENCH, WD-40, MEASURING TAPE
TO REMOVE STOCK EXHAUST, SEE BELOW FOR PROPER VEHICLE APPLICATION.



EXTENDED CAB- SHORT&LONG BED STANDARD CAB-LONG BED SUPERCREW – SHORT BED

MEASURE 43" FROM THE REAR OF THE MUFFLER FORWARD AND CUT. YOU WILL BE REMOVING THE STOCK ALIGNMENT PIN. CUT STOCK EXHAUST OFF AND USED WD-40 ON ALL HANGERS. LEAVE RUBBER GROMMETS IN PLACE.



INSTALL NEW HEADPIPE #A AND ATTACH USING CLAMP #G TO FACTORY PIPE.



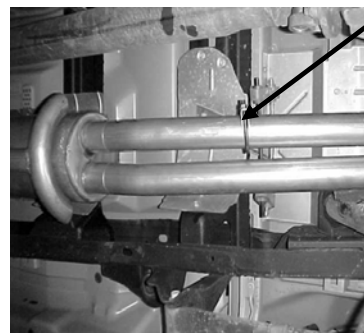
INSTALL THE DRIVERSIDE FRONT TAILPIPE # D TO OUTLET OF MUFFLER NOT MORE THAN 1.5" TO 2". THE TAILPIPE INLET THAT GOES INTO THE MUFFLER IS 4.5" LONG. ATTACH WITH HANGER# G. INSTALL DRIVERSIDE OVERAXLE TAILPIPE # E TO FRONT DRIVERSIDE TAILPIPE, THIS PART HAS A SWEDGE UP ON IT. ATTACH USING CLAMP # G. INSTALL PASSENGER OVERAXLE TAILPIPE TO THE OUTLET OF THE MUFFLER NOT MORE THAN 1.5" TO 2". THE TAILPIPE INLET THAT GOES INTO THE MUFFLER IS 4.5" LONG AND ATTACH WITH CLAMP # G. DO NOT TIGHTEN.



STANDARD CAB, SHORT BED

UNCLAMP STOCK MUFFLER. YOU WILL LEAVE THE FACTORY ALIGNMENT PIN IN PLACE. FOR EASIER REMOVAL HEAT UP CLAMP. CUT STOCK EXHAUST OFF AND USE WD-40 ON ALL HANGERS. LEAVE RUBBER GROMMETS IN PLACE.

CUT 4" OFF THE GIBSON HEADPIPE#A. INSTALL HEADPIPE TO THE FACTORY HEADPIPE AND INSERT INTO FACTORY ALIGNMENT PIN USING CLAMP #G.



NEXT INSTALL HANGER # J TO DRIVERSIDE TAILPIPE AND INSERT WELDED HANGER INTO RUBBER GROMMET.MAKE SURE YOU HAVE EQUAL SPACE BETWEEN SHOCK AND SPARE TIRE. THE SPARE TIRE MAY NEED TO BE LOOSENED AND PUSH TO THE DRIVER SIDE AND THEN ROTATE THE OVERAXLE PIPE TO GAIN CLEARANCE.

NEXT, ALL TRUCKS

INSTALL MUFFLER ONTO HEADPIPE AT LEAST 1.5" TO 2", AND ATTACH USING CLAMP #H.. USE A JACKSTAND TO SUPPORT THE MUFFLER. DO NOT TIGHTEN.



ON DRIVER SIDE MEASURE 17-1/2" FROM THE REAR OF THE FRAME FORWARD. USE HANGER # I. USE THE TOP HOLE OF THIS HANGER. USE HARDWARE PROVIDED. REPEAT FOR PASS. SIDE.



INTSTALL EXIT PIPES # F TO THE OVERAXLE TAILPIPES USE CLAMP # G TO SECURE USE ZIP TIES FOR BRAKE AND HOSE LINES TO KEEP AWAY FROM PIPES. NOW FIRMLY TIGHTEN ALL BOLTS, CLAMPS AND HANGERS. INSTALL STAINLESS TIPS.

MAKE SURE YOU AT LEAST A 1" CLEARANCE ON ALL BRAKE LINES, FUEL LINES, SHOCKS, TIRES, ETC.