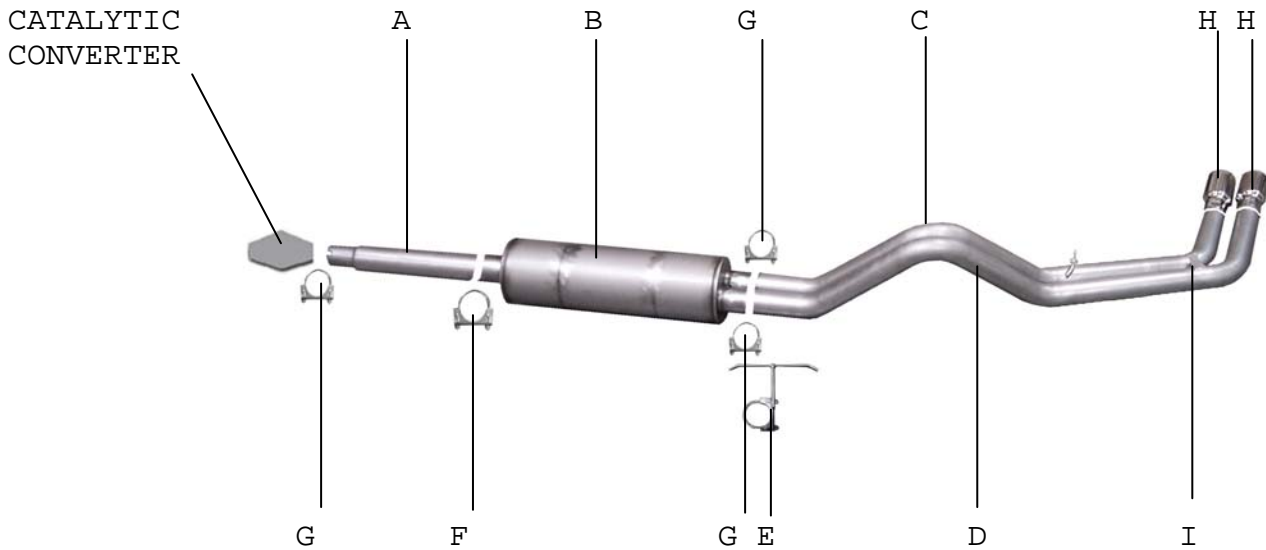




# INSTRUCTION MANUAL

CAT-BACK STAINLESS DUAL SPORT EXHAUST  
 87-96 FORD F150 TRUCK, 4.9L, 5.0L, 5.8L  
 STANDARD CAB, LONG BED

**PART # 69800**



| ITEM | PART #      | QTY. | DESCRIPTION                                |
|------|-------------|------|--|
| A    | 419-700279S | 1    | 3" X 19 1/2" STAINLESS HEADPIPE            |
| B    | 789800S     | 1    | STAINLESS SUPERFLOW DUAL OUTLET MUFFLER    |
| C    | 417-700256S | 1    | 2-1/2" STAINLESS PASS. SIDE OVERAXLE PIPE  |
| D    | 418-700255S | 1    | 2-1/2" STAINLESS DRIVER SIDE OVERAXLE PIPE |
| E    | 4141        | 1    | O.E. REAR MUFFLER HANGER                   |
| F    | ODH300      | 1    | 3" CLAMP                                   |
| G    | 5757        | 3    | 2-1/2" CLAMP                               |
| H    | 500396      | 2    | 3-1/2" STAINLESS TIPS                      |
| I    | BO-906      | 1    | BOLT KIT FOR TAILPIPE                      |

*Thank you for purchasing our GIBSON EXHAUST SYSTEM for your vehicle. If you need further assistance, please do not hesitate to call our Technical Department at (800)528-3044, Monday through Friday, 8:00 am to 5:00 p.m. 1104*

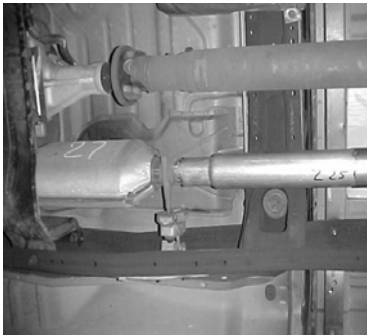
# INSTALLATION INSTRUCTIONS

WHEN INSTALLING THIS EXHAUST SYSTEM MAKE SURE TO USE ALL THE PROPER SAFETY PRECAUTIONS. USE JACK STANDS WHEN UNDER TRUCK, SET PARKING BRAKE, BLOCK TIRES AND USE SAFETY GLASSES.

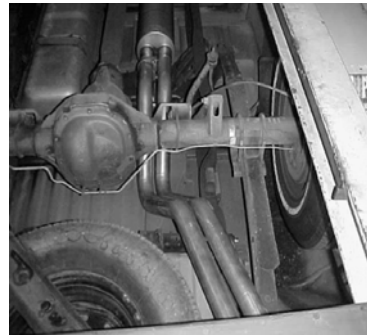
**DO NOT WORK WITH HOT PIPES!**

## SUGGESTED TOOLS:

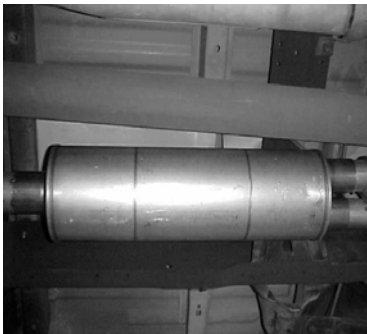
15MM SOCKET, 9/16" SOCKET, 1/2" SOCKET, 1/2" WRENCH, JACKSTAND, HACKSAW



LAYOUT THE GIBSON EXHAUST SYSTEM ON THE FLOOR SO IT LOOKS LIKE THE DRAWING. THEN REMOVE THE STOCK EXHAUST SYSTEM, BUT LEAVE ALL RUBBER GROMMETS IN PLACE. START WITH INSTALLING HEADPIPE #A ONTO CATALYTIC CONVERTER AND CLAMP #G. **DO NOT TIGHTEN!**



THEN USE SUPPLIED HARDWARE BOLT KIT #1 TO BOLT TOGETHER THE OVERAXLE TAILPIPES. **DO NOT TIGHTEN!** THE TAB ON THE DRIVER SIDE TAILPIPE WILL BE ON TOP OF THE PASSENGER SIDE TAILPIPE.



THEN INSTALL MUFFLER #B ONTO HEADPIPE #A AND CLAMP USING #F BUT DO NOT TIGHTEN. TO HELP SUPPORT YOUR MUFFLER, USE A JACK STAND. BEFORE INSTALLING OVERAXLE TAILPIPE, INSTALL REAR MUFFLER HANGER #E.



WHEN EVERYTHING IS IN PLACE, FIRMLY TIGHTEN ALL BOLTS AND CLAMPS.

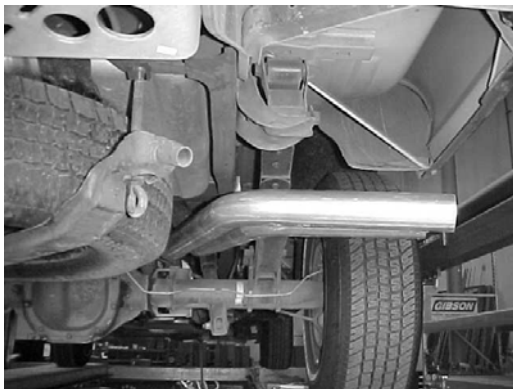
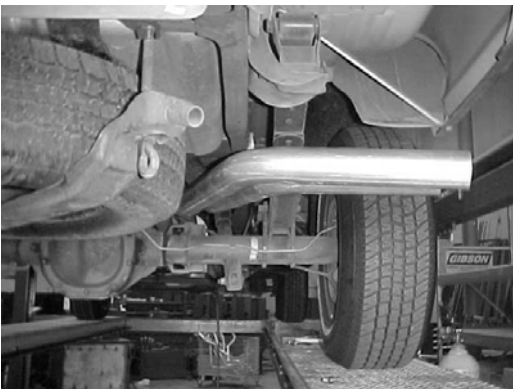
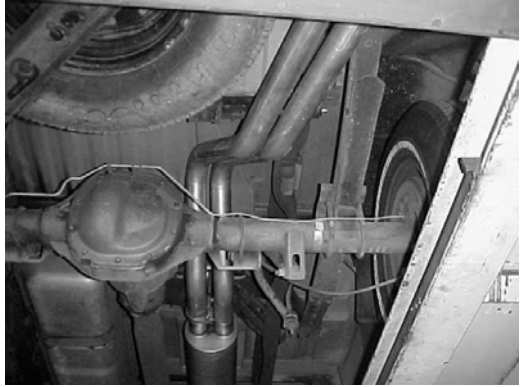
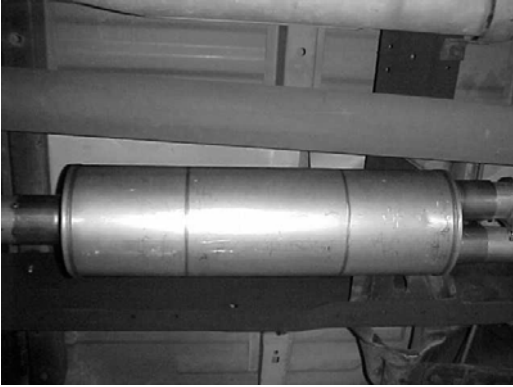
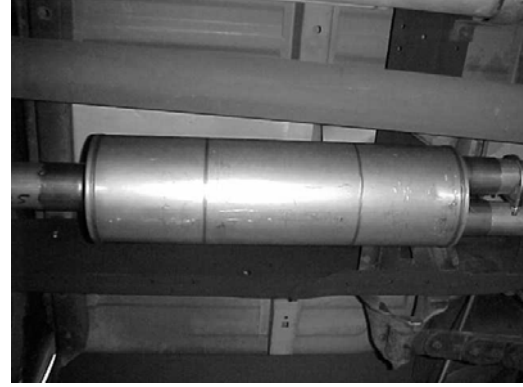
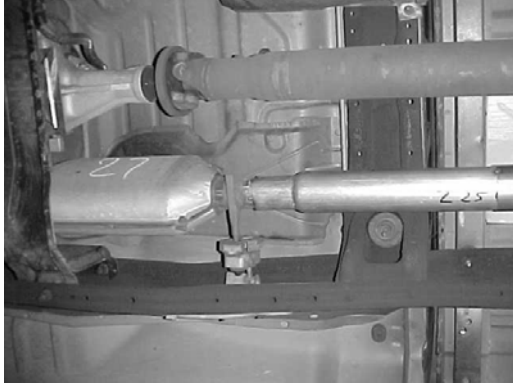
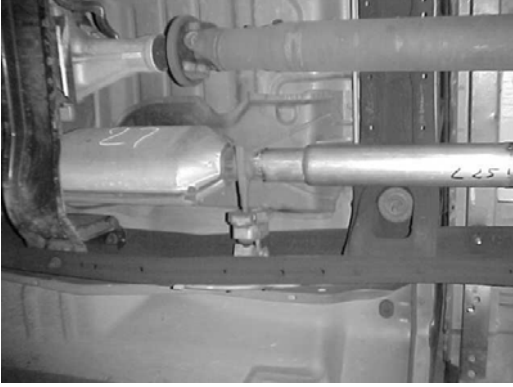


THEN, INSTALL DRIVERSIDE TAILPIPE #D. SUPPORT THE MUFFLER WITH A JACK STAND. THEN INSTALL PASSENGER SIDE OVERAXLE #C. INSERT WELDED HANGER ON TAILPIPE INTO FACTORY RUBBER GROMMET. **NOTE: SPARE TIRE MAY HAVE TO BE LOOSENED AND MOVED FOR BETTER CLEARANCES.**



INSTALL STAINLESS TIPS. TO CLEAN TIPS, USE ANY ALUMINUM OR STAINLESS POLISH.

**MAKE SURE YOU HAVE AT LEAST 1" CLEARANCE ON ALL PIPES, RUBBER HOSES, TIRES, BRAKE LINES, ETC.**



# INSTALLATION INSTRUCTIONS

## PART #9800

WHEN INSTALLING THIS EXHAUST SYSTEM MAKE SURE TO USE ALL THE PROPER SAFETY PRECAUTIONS. USE JACK STANDS WHEN UNDER TRUCK, SET PARKING BRAKE, BLOCK TIRES AND USE SAFETY GLASSES. DO NOT WORK WITH HOT PIPES! DUE TO VEHICLE TOLERANCES, SOME EXHAUST KITS MAY REQUIRE MORE ADJUSTMENT THAN OTHERS MAY.

### SUGGESTED TOOLS:

15MM SOCKET, 9/16" SOCKET, 1/2" SOCKET, 1/2" WRENCH, JACKSTAND

1. Lay out the GIBSON EXHAUST SYSTEM on the floor so it looks like the drawing.
2. Remove stock exhaust from behind the converter. Leave all rubber grommets in place.
3. Connect front extension pipe onto the converter. Use jack stands to support converter so it won't drop. Install O.E. hanger #E to help support muffler.
4. Connect muffler to the front extension pipe with inlet towards the converter. Use a jack stand to support muffler and connect clamp #F to the front of the muffler. Do not tighten!
5. Install the over axle tailpipes, connect to muffler and clamp. Do not tighten!
6. When you have everything in place, firmly tighten all bolts and clamps down securely.
7. Install stainless tips.

### SPECIAL NOTES:

- MAKE SURE YOU HAVE A 1" CLEARANCE ON ALL PIPES FROM ALL RUBBER BRAKE LINES, SHOCK BOOTS, TIRES, ETC.
- OKAY FOR TRUCKS WITH A 4" DROP
- SPARE TIRE ON SOME MODELS MAY HAVE TO BE LOOSENED UP AND PUSHED OVER TO THE DRIVERS SIDE

### LEGAL STATUS:

THE GIBSON EXHAUST SYSTEM IS IN COMPLIANCE WITH VC27156 WHEN INSTALLED BEHIND THE CATALYTIC CONVERTER. NO EXEMPTION NUMBER IS NEEDED.

### SKILL LEVEL:

- NOVICE-1<sup>ST</sup> TIME INSTALLER, MAY REQUIRE 2 PEOPLE

